



MASTER LEDtube EM/ Mains T8

MAS LEDtube 1200mm UO 16W 840 T8 FF RCA

The Philips MASTER LEDtube integrates a LED light source into a traditional fluorescent form factor. Its unique design creates a perfectly uniform visual appearance, which cannot be distinguished from traditional fluorescent. These T8 LED tubes are the right choice for absolute performance and are designed to stand up to everyday conditions. Unparalleled savings thanks to low energy consumption and an exceptionally long lifetime ensure this tube masters every demanding application.

Warnings and Safety

- NOTE: The overall energy efficiency and light distribution of any installation that uses these lamps will be determined by the design of the installation.

Product data

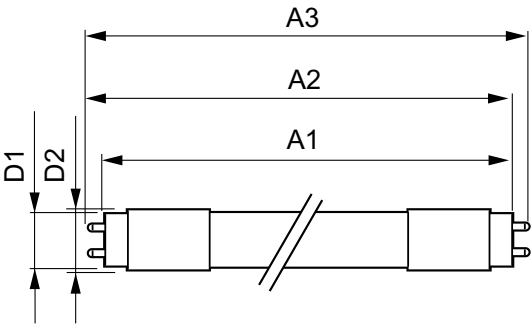
General Information		Color Consistency	
Cap-Base	G13 [Medium Bi-Pin Fluorescent]	Color rendering index (CRI)	83
Nominal lifetime	50,000 hour(s)	LLMF At End Of Nominal Lifetime (Nom) 70 %	
Switching Cycle	200,000	Operating and Electrical	
Lighting Technology	LED	Line Frequency	50 to 60 Hz
EU RoHS compliant	Yes	Input Frequency	50 to 60 Hz
Light Technical		Power Consumption	16 W
Color Code	840 [CCT of 4000K]	Lamp Current (Max)	75 mA
Beam Angle (Nom)	160 degree(s)	Lamp Current (Min)	68 mA
Luminous Flux	2,500 lm	Starting Time (Nom)	0.5 s
Color Designation	Cool White (CW)	Warm-up time to 60% light	0.5 s
Correlated Color Temperature (Nom)	4000 K	Power Factor (Fraction)	0.9
Luminous Efficacy (rated) (Nom)	156.00 lm/W		

MASTER LEDtube EM/Mains T8

Voltage (Nom)	220-240 V
Temperature	
Ambient temperature range	-20 °C to 45 °C
T-Case Maximum (Nom)	55 °C
Controls and Dimming	
Dimmable	No
Mechanical and Housing	
Product Length	1,200 mm
Bulb Shape	T8
Approval and Application	
Energy Saving Product	Yes
Approval Marks	RoHS compliance TUV CE marking KEMA Keur certificate

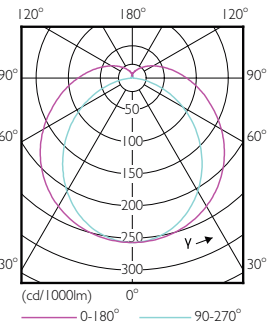
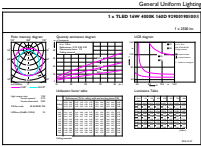
Energy Consumption kWh/1000 h	16 kWh
Product Data	
Order product name	MAS LEDtube 1200mm UO 16W 840 T8 FF RCA
Full product name	MAS LEDtube 1200mm UO 16W 840 T8 FF RCA
Full product code	871869681801500
Order code	929001908008
Material Nr. (12NC)	929001908008
Numerator - Quantity Per Pack	1
EAN/UPC - Product/Case	8718696818015
Numerator - Packs per outer box	10
EAN/UPC - Case	8718696818022

Dimensional drawing



Product	D1	D2	A1	A2	A3
MAS LEDtube 1200mm UO 16W 840 T8 FF RCA	25.8 mm	28 mm	1,198.2 mm	1,205.3 mm	1,198.2 mm

Photometric data

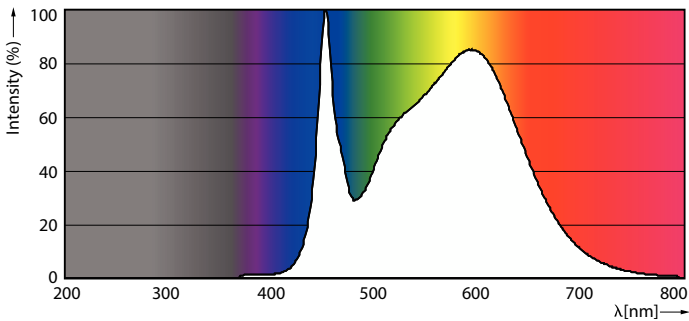


General uniform lighting - MAS LEDtube 1200mm UO 16W 840 T8 FF RCA

Light Distribution Diagram - MAS LEDtube 1200mm UO 16W 840 T8 FF RCA

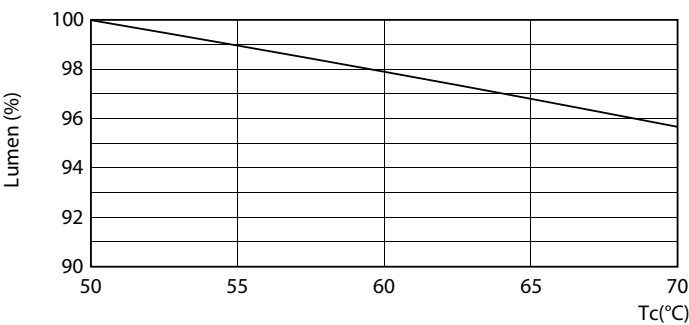
MASTER LEDtube EM/Mains T8

Photometric data

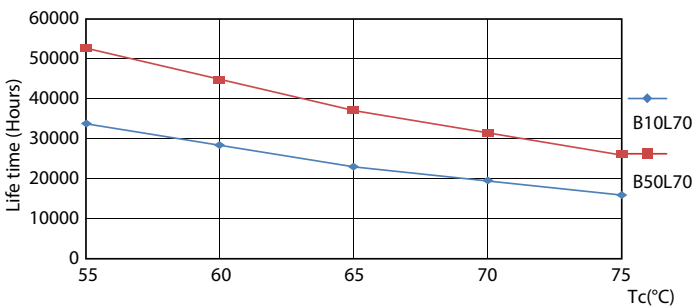


Spectral Power Distribution Colour - MAS LEDtube 1200mm UO 16W 840 T8 FF RCA

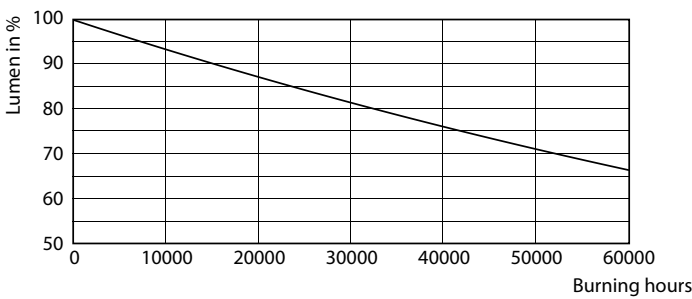
Lifetime



Lumen Maintenance Diagram - MAS LEDtube 1200mm UO 16W 840 T8 FF RCA



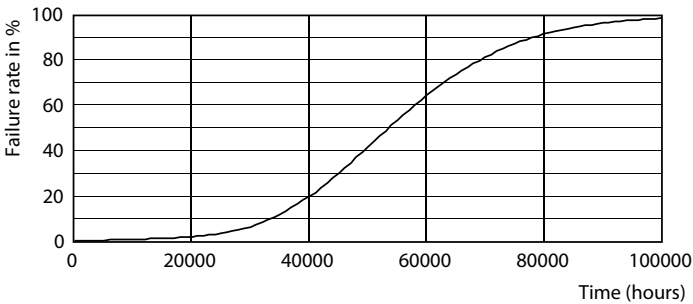
Life Expectancy Diagram - MAS LEDtube 1200mm UO 16W 840 T8 FF RCA



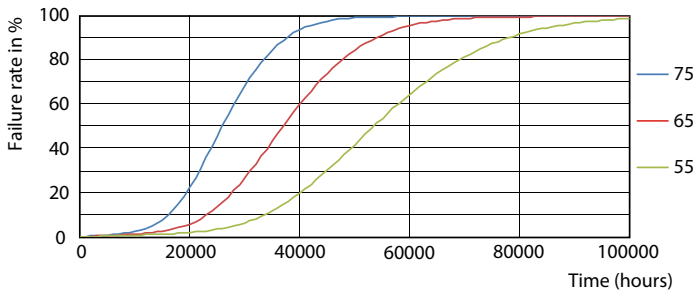
Lumen Maintenance Diagram - MAS LEDtube 1200mm UO 16W 840 T8 FF RCA

MASTER LEDtube EM/Mains T8

Lifetime



Life Expectancy Diagram - MAS LEDtube 1200mm UO 16W 840 T8 FF RCA



Life Expectancy Diagram - MAS LEDtube 1200mm UO 16W 840 T8 FF RCA

