



MASTER LEDtube Mains T5

MASTER LEDtube 1200mm HO 26W 840 T5

The new Philips Master LEDtube Mains T5 brings simplicity to your lighting project. You don't need to pay attention to the driver technology anymore. Thanks to a unique design, Philips MASTER LEDtube Mains T5 installs in luminaires operating on mains power connection. So simple to operate! Perfectly safe, reliable & easy to install, the Philips MASTER LEDtube Mains T5 is the ideal alternative to standard fluorescent tubes to maximise value over lifetime with high energy savings and lower maintenance costs.

Product data

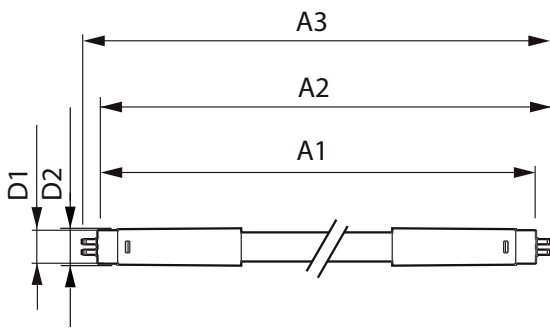
General Information		Starting time (nom.)		0.5 s
Cap base	G5 [G5]	Warm-up time to 60% light (nom.)	0.5 s	
EU RoHS compliant	Yes	Power factor (nom.)	0.9	
Nominal lifetime (nom.)	50000 h	Voltage (Nom)	220-240 V	
Switching cycle	200000X	Temperature		
Light Technical		T ambient (max.)	45 °C	
Colour Code	840 [CCT of 4,000 K]	T ambient (min.)	-20 °C	
Technical Beam Angle (Nom)	200 °	T storage (max.)	65 °C	
Lamp Luminous Flux 25°C EL (Nom)	3900 lm	T storage (min.)	-40 °C	
Colour Temperature, horizontal (Nom)	4000 K	T-Case maximum (nom.)	72.1 °C	
Colour consistency	<6	Controls and Dimming		
Colour Rendering Index,horiz (Nom)	80	Dimmable	No	
LLMF at end of nominal lifetime (nom.)	70 %	Mechanical and Housing		
Operating and Electrical		Bulb material	Glass	
Input frequency	50 to 60 Hz			
Power (Rated) (Nom)	26 W			

MASTER LEDtube Mains T5

Product length	1200 mm
Approval and Application	
Energy efficiency label (EEL)	A++
Energy-saving product	Yes
Approval marks	CE marking RoHS compliance KEMA Keur certificate
Energy Consumption kWh/1000 h	26 kWh
Product Data	
Full product code	871869681923400

Order product name	MASTER LEDtube 1200mm HO 26W 840 T5
EAN/UPC – product	8718696819234
Order code	929001908602
Numerator – quantity per pack	1
Numerator – packs per outer box	10
Material no. (12NC)	929001908602
Net weight (piece)	0.215 kg

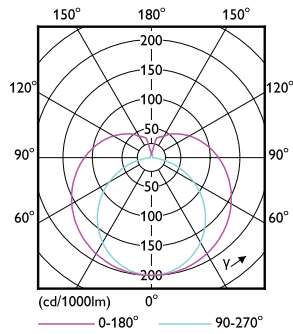
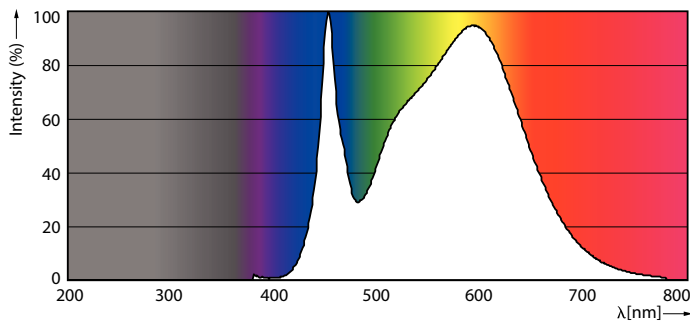
Dimensional drawing



Product	D1	D2	A1	A2	A3
MASTER LEDtube 1200mm HO 26W 840 T5	15 mm	16.9 mm	1149 mm	1156.1 mm	1163.2 mm

TLED 1200mm 26W-54W 3900lm 200D 4000K G5

Photometric data

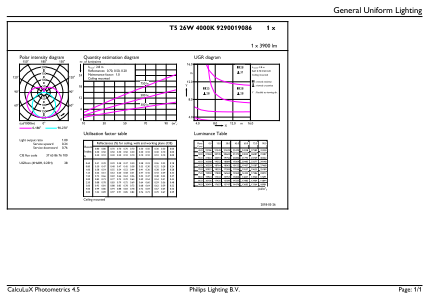


26W G5

26W G5 830 3000K

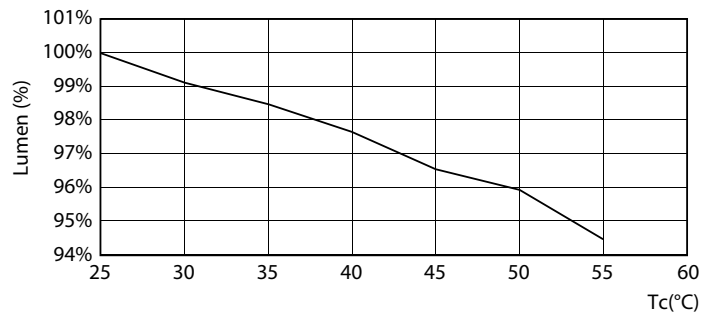
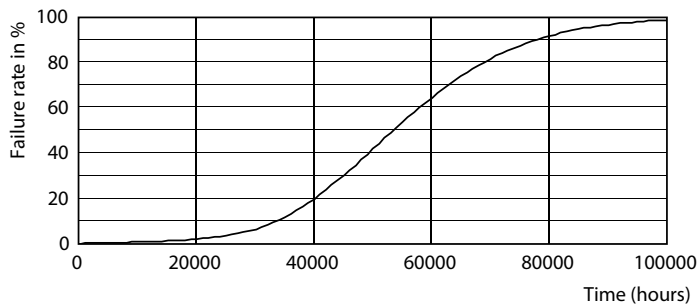
MASTER LEDtube Mains T5

Photometric data

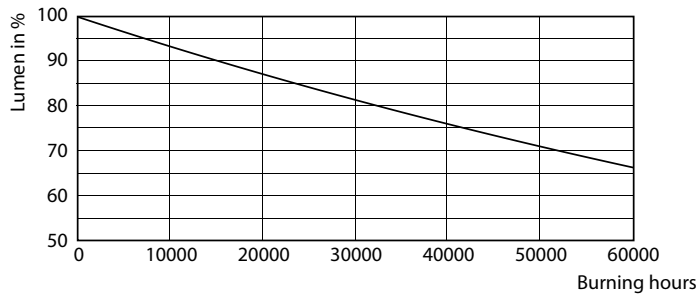


26W G5 840 4000K

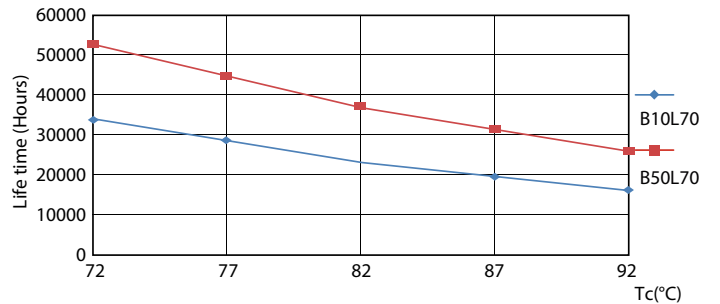
Lifetime



26W G5



26W G5

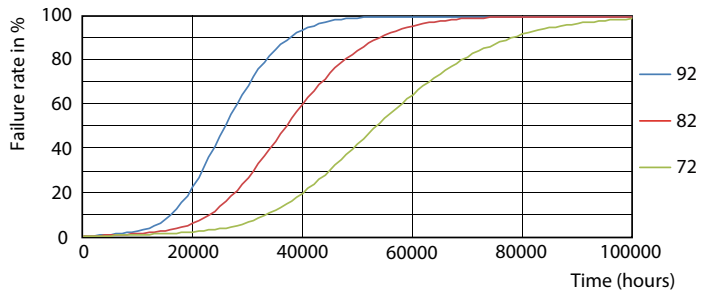


26W G5

26W G5

MASTER LEDtube Mains T5

Lifetime



26W G5

