



MASTER LEDtube Mains T5

MAS LEDtube 1200mm HO 26W 840 T5

The new Philips Master LEDtube Mains T5 brings simplicity to your lighting project. You don't need to pay attention to the driver technology anymore. Thanks to a unique design, Philips MASTER LEDtube Mains T5 installs in luminaires operating on mains power connection. So simple to operate! . Perfectly safe, reliable & easy to install, the Philips MASTER LEDtube Mains T5 is the ideal alternative to standard fluorescent tubes to maximise value over lifetime with high energy savings and lower maintenance costs.

Product data

General Information		LLMF At End Of Nominal Lifetime (Nom)	
Cap-Base	G5		70 %
Nominal lifetime	50,000 hour(s)	Flickering value (PstLM) - Flickering value as per EN 61000-3-3	1
Switching Cycle	200,000	Stroboscopic effect visibility measure (SVM)	0.4
Lighting Technology	LED	Photobiological safety according to EN 62471	RG0
Flux measurement reference	Sphere	Operating and Electrical	
CE mark	Yes	Line Frequency	50 to 60 Hz
EU RoHS compliant	Yes	Input Frequency	50 to 60 Hz
Light Technical		Power Consumption	26 W
Color Code	840 [CCT of 4000K]	Lamp Current (Nom)	125 mA
Beam Angle (Nom)	200 degree(s)	Starting Time (Nom)	0.5 s
Luminous Flux	3,900 lm	Warm-up time to 60% light	0.5 s
Color Designation	Cool White (CW)	Power Factor (Fraction)	0.92
Correlated Color Temperature (Nom)	4000 K	Voltage (Nom)	220-240 V
Luminous Efficacy (rated) (Nom)	150 lm/W	LED alternative to fluorescent lamp power	54 W
Color Consistency	<6	Inrush current at mains	20
Color rendering index (CRI)	80	Max. lamp no. on MCB B type 10A - Mains	31

MASTER LEDtube Mains T5

Max. lamp no. on MCB B type 10A – EM ballast without Comp. Cap.	-
Max. lamp no. on MCB B type 10A – EM ballast with Comp. Cap.	-
Max. lamp no. on MCB B type 16A – Mains	50
Max. lamp no. on MCB B type 16A – EM ballast without Comp. Cap.	-
Max. lamp no. on MCB B type 16A – EM ballast with Comp. Cap.	-
Ballast Compatibility	Mains

Temperature

Ambient temperature range	-20 to +45 °C
T-Case Maximum (Nom)	65 °C

Controls and Dimming

Dimmable	No
----------	----

Mechanical and Housing

Bulb Finish	Frosted
Bulb Material	Glass
Product Length	1,200 mm
Bulb Shape	T5

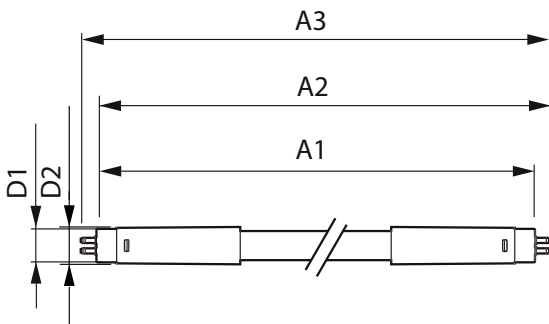
Approval and Application

Energy Efficiency Class	D
Energy Saving Product	Yes
Approval Marks	RoHS compliance TUV CE marking KEMA Keur certificate
Energy Consumption kWh/1000 h	26 kWh
EPREL Registration Number	1476416

Product Data

Order product name	MAS LEDtube 1200mm HO 26W 840 T5
Full product name	MAS LEDtube 1200mm HO 26W 840 T5
Full product code	871869681923400
Order code	929001908602
Material Nr. (12NC)	929001908602
Numerator - Quantity Per Pack	1
EAN/UPC - Product/Case	8718696819234
Numerator - Packs per outer box	10
EAN/UPC - Case	8718696819241

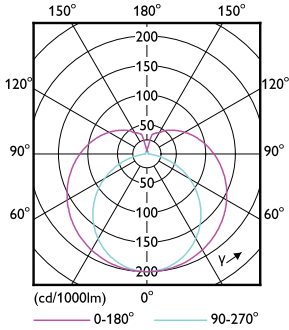
Dimensional drawing



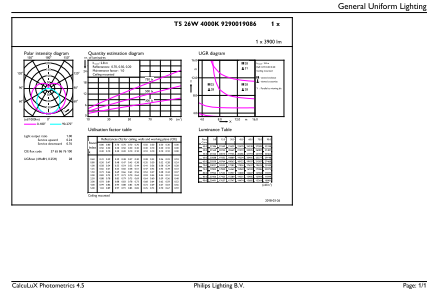
Product	D1	D2	A1	A2	A3
MAS LEDtube 1200mm HO 26W 840 T5	15.5 mm	17.1 mm	1,149 mm	1,156 mm	1,163 mm

MASTER LEDtube Mains T5

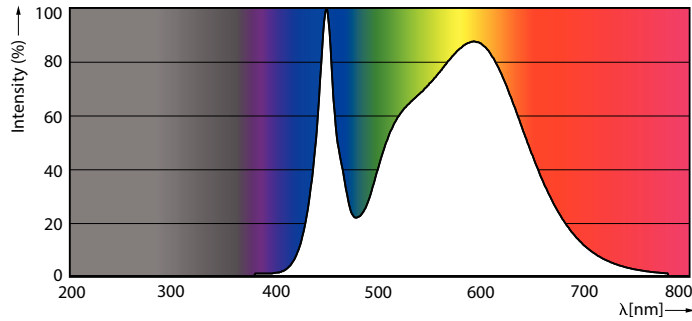
Photometric data



Light Distribution Diagram - MAS LEDtube 1200mm HO 26W 840 T5

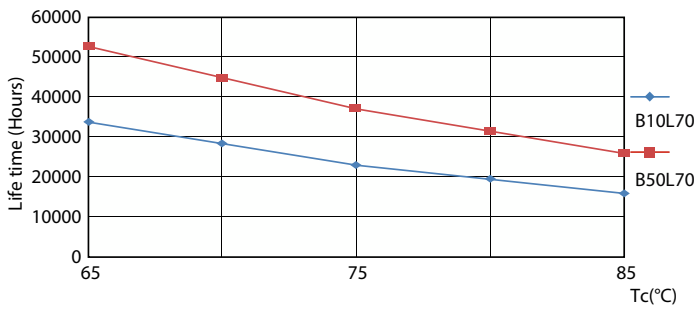


General uniform lighting - MAS LEDtube 1200mm HO 26W 840 T5



Spectral Power Distribution Colour - MAS LEDtube 1200mm HO 26W 840 T5

Lifetime



Life Expectancy Diagram - MAS LEDtube 1200mm HO 26W 840 T5



Life Expectancy Diagram - MAS LEDtube 1200mm HO 26W 840 T5

MASTER LEDtube Mains T5

Lifetime



Lumen Maintenance Diagram - MAS LEDtube 1200mm HO 26W 840 T5

Lumen Maintenance Diagram - MAS LEDtube 1200mm HO 26W 840 T5



Life Expectancy Diagram - MAS LEDtube 1200mm HO 26W 840 T5

