



MASTER LEDtube Mains T5

MASTER LEDtube 1200mm HO 26W 865 T5

The new Philips Master LEDtube Mains T5 brings simplicity to your lighting project. You don't need to pay attention to the driver technology anymore. Thanks to a unique design, Philips MASTER LEDtube Mains T5 installs in luminaires operating on mains power connection. So simple to operate! Perfectly safe, reliable & easy to install Philips MASTER LEDtube Mains T5 is the ideal alternative to standard fluorescent tubes to maximize value over lifetime with high energy saving and lower maintenance costs.

Product data

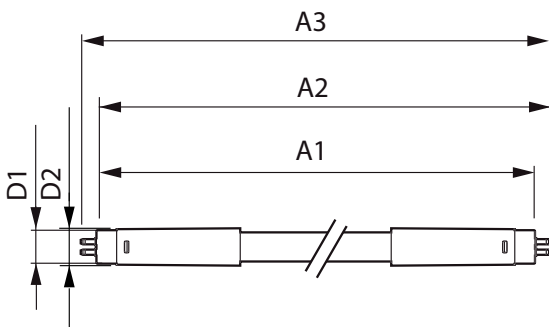
General Information		Starting Time (Nom)	
Cap-Base	G5 [G5]		0.5 s
EU RoHS compliant	Yes	Warm Up Time to 60% Light (Nom)	0.5 s
Nominal Lifetime (Nom)	50000 h	Power Factor (Nom)	0.9
Switching Cycle	200000X	Voltage (Nom)	220-240 V
Light Technical		Temperature	
Color Code	865 [CCT of 6500K]	T-Ambient (Max)	45 °C
Beam Angle (Nom)	200 °	T-Ambient (Min)	-20 °C
Luminous Flux (Nom)	3900 lm	T-Storage (Max)	65 °C
Correlated Color Temperature (Nom)	6500 K	T-Storage (Min)	-40 °C
Color Consistency	<6	T-Case Maximum (Nom)	72.1 °C
Color Rendering Index (Nom)	80	Controls and Dimming	
LLMF At End Of Nominal Lifetime (Nom)	70 %	Dimmable	No
Operating and Electrical		Mechanical and Housing	
Input Frequency	50 to 60 Hz	Bulb Material	Glass
Power (Nom)	26 W		

MASTER LEDtube Mains T5

Product Length	1200 mm
Approval and Application	
Energy Efficiency Label (EEL)	A++
Energy Saving Product	Yes
Approval Marks	CE marking RoHS compliance KEMA Keur certificate
Energy Consumption kWh/1000 h	26 kWh
Product Data	
Full product code	871869681925800

Order product name	MASTER LEDtube 1200mm HO 26W 865 T5
EAN/UPC - Product	8718696819258
Order code	929001908702
Numerator - Quantity Per Pack	1
Numerator - Packs per outer box	10
Material Nr. (12NC)	929001908702
Net Weight (Piece)	0.215 kg

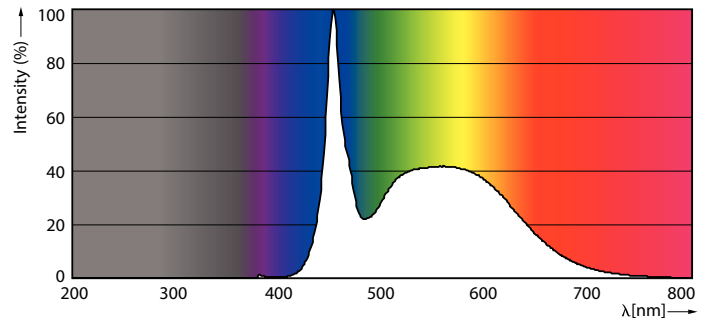
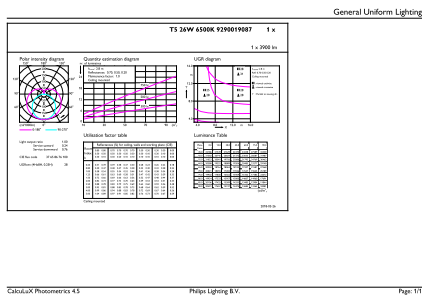
Dimensional drawing



Product	D1	D2	A1	A2	A3
MASTER LEDtube 1200mm HO 26W 865 T5	15 mm	16.9 mm	1149 mm	1156.1 mm	1163.2 mm

TLED 1200mm 26W-54W 3900lm 200D 6500K G5

Photometric data

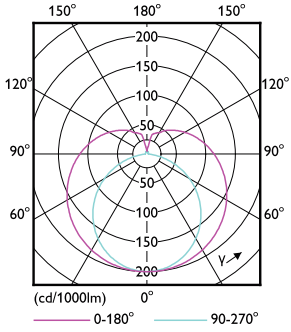


26W G5 865 6500K

26W G5

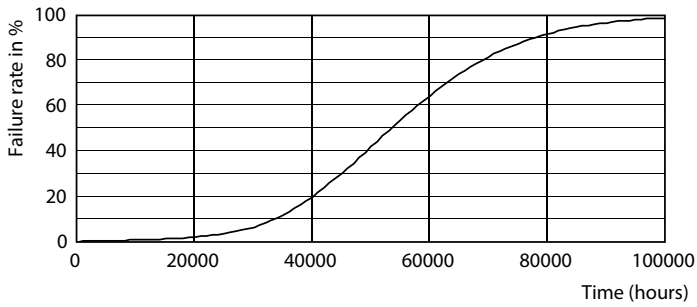
MASTER LEDtube Mains T5

Photometric data

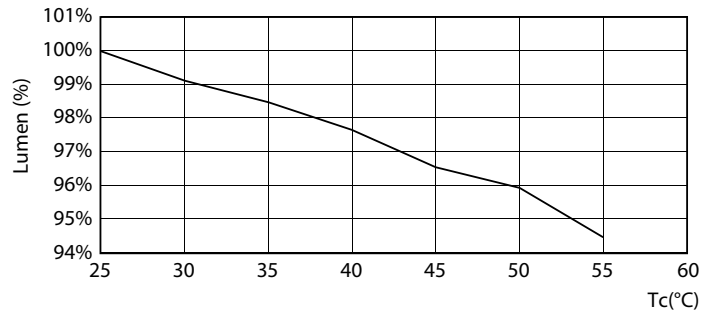


26W G5 830 3000K

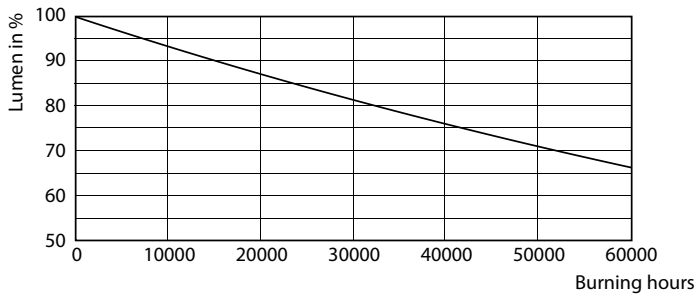
Lifetime



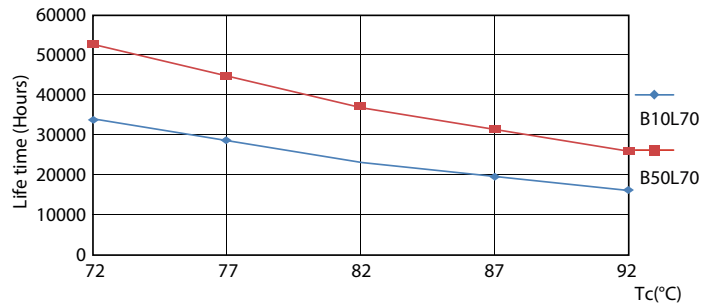
26W G5



26W G5



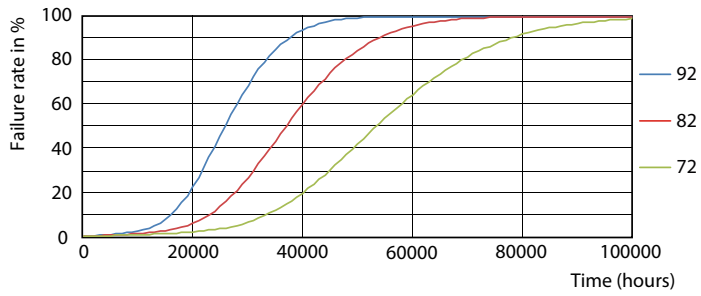
26W G5



26W G5

MASTER LEDtube Mains T5

Lifetime



26W G5

