



LED PAR20

8.5PAR20/PER/927/F40/DIM/EC/120V 6/1FB

Philips is driving the switch to energy-efficient solutions. Upgrade your track and accent lights with our small diameter reflectors for instant energy savings and unbeatable quality. Available in both Glass and Plastic casings, Philips LED Par20s are the ideal replacement for halogen.

Product data

General Information	
Cap-Base	E26 [Single Contact Medium Screw]
Nominal lifetime	25,000 hour(s)
Switching Cycle	50,000
Lighting Technology	LED
EU RoHS compliant	Yes
Light Technical	
Color Code	927
Beam Angle (Nom)	40 degree(s)
Luminous Flux	600 lm
Luminous Intensity (Nom)	1,050 cd
Color Designation	Warm White (WW)
Correlated Color Temperature (Nom)	2700 K
Luminous Efficacy (rated) (Nom)	70.00 lm/W
Color Consistency	<4
Color rendering index (CRI)	95
LLMF At End Of Nominal Lifetime (Nom)	70 %
Operating and Electrical	
Line Frequency	50 to 60 Hz
Input Frequency	50 to 60 Hz
Power Consumption	8.5 W

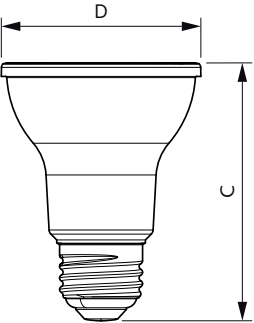
Lamp Current (Nom)	86 mA
Wattage Equivalent	50 W
Starting Time (Nom)	0.5 s
Warm-up time to 60% light	0.5 s
Power Factor (Fraction)	0.8
Voltage (Nom)	120 V
Temperature	
T-Case Maximum (Nom)	187 °F
Controls and Dimming	
Dimmable	Yes
Mechanical and Housing	
Bulb Shape	PAR20 [PAR 2.5 inch/63mm]
Approval and Application	
Suitable For Accent Lighting	Yes
Energy Consumption kWh/1000 h	- kWh
Product Data	
Order product name	8.5PAR20/PER/927/F40/DIM/EC/120V 6/1FB
Full product name	8.5PAR20/PER/927/F40/DIM/EC/120V 6/1FB

LED PAR20

Order code	535294
Material Nr. (12NC)	929001922104
Numerator - Quantity Per Pack	1
EAN/UPC - Product/Case	046677535292

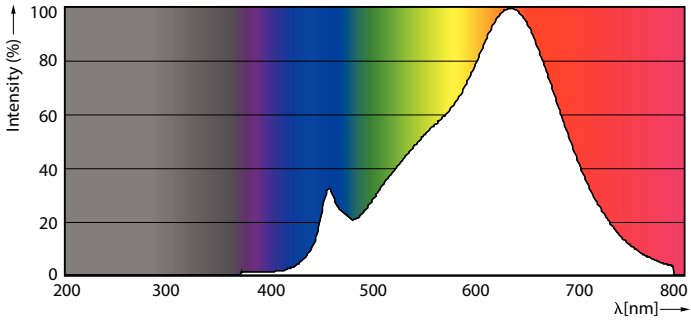
Numerator - Packs per outer box	6
EAN/UPC - Case	50046677535297

Dimensional drawing

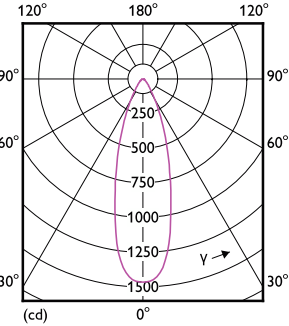


Product	D	C
8.5PAR20/PER/927/F40/DIM/EC/120V 6/1FB	2-9/16 inch	3-5/16 inch

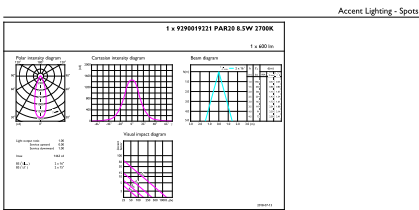
Photometric data



Spectral Power Distribution Colour - 8.5PAR20/PER/927/F40/DIM/EC/120V 6/1FB



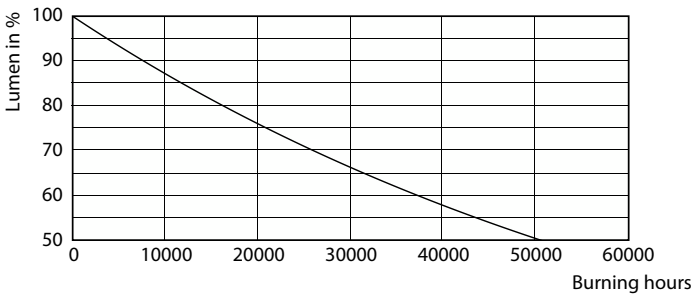
Light Distribution Diagram - 8.5PAR20/PER/927/F40/DIM/EC/120V 6/1FB



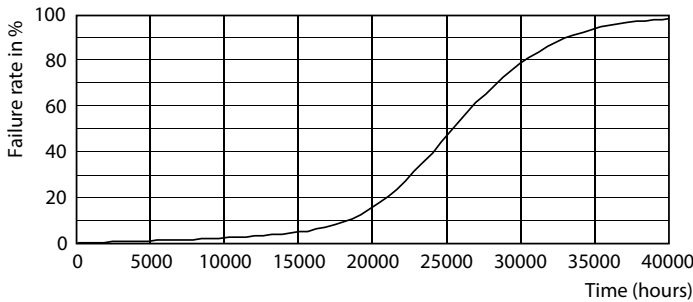
Accent Lighting Spots - 8.5PAR20/PER/927/F40/DIM/EC/120V 6/1FB

LED PAR20

Lifetime



Lumen Maintenance Diagram - 8.5PAR20/PER/927/F40/DIM/EC/120V 6/1FB



Life Expectancy Diagram - 8.5PAR20/PER/927/F40/DIM/EC/120V 6/1FB

