



# MASTER LEDtube EM/ Mains

## MASTER LEDtube 1200mm HO 12.5W 840 T8

The Philips MASTER LEDtube integrates a LED light source into a traditional fluorescent form factor. Its unique design creates a perfectly uniform visual appearance which cannot be distinguished from traditional fluorescent. For those that are looking for value for money within limited budget and re-lamping efforts for better light effect and lifetime.

### Product data

#### General Information

Cap base	G13 [ Medium Bi-Pin Fluorescent]
Nominal lifetime (nom.)	60000 h
Switching cycle	200000X
B50L70	60000 h

#### Light Technical

Colour code	841 [ CCT of 4100K (841)]
Beam Angle (Nom)	160 °
Luminous flux (nom.)	2100 lm
Luminous flux (rated) (nom.)	2100 lm
Rated beam angle	160 °
Correlated colour temperature (nom.)	4000 K
Colour consistency	<6
Color rendering index (nom.)	83
LLMF at end of nominal lifetime (nom.)	70 %

#### Operating and Electrical

Input frequency	50 to 60 Hz
Power (Rated) (Nom)	12.5 W

Lamp current (max.)	59 mA
Lamp current (min.)	54 mA
Starting time (nom.)	0.5 s
Warm-up time to 60% light (nom.)	0.5 s
Power factor (nom.)	0.9
Voltage (Nom)	220-240 V

#### Temperature

T ambient (max.)	45 °C
T ambient (min.)	-20 °C
T storage (max.)	65 °C
T storage (min.)	-40 °C
T-Case maximum (nom.)	50 °C

#### Controls and Dimming

Dimmable	No
----------	----

#### Mechanical and Housing

Product length	1200 mm
----------------	---------

# MASTER LEDtube EM/Mains

## Approval and Application

Energy efficiency label (EEL)	A++
Energy-saving product	Yes
Approval marks	RoHS compliance CE marking KEMA Keur certificate
Energy Consumption kWh/1000 h	13 kWh

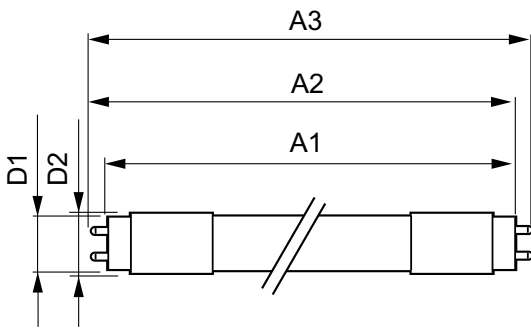
## Product Data

Full product code	871869959237000
-------------------	-----------------

Order product name	MASTER LEDtube 1200mm HO 12.5W 840 T8
EAN/UPC – product	8718699592370
Order code	59237000
Numerator – quantity per pack	1
Numerator – packs per outer box	10
Material no. (12NC)	929001922702
Net weight (piece)	0.250 kg

## Warnings and Safety

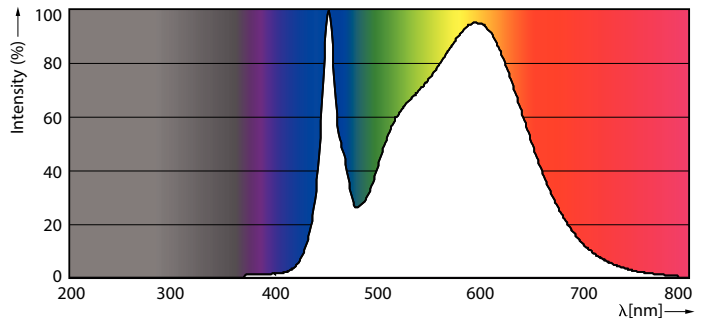
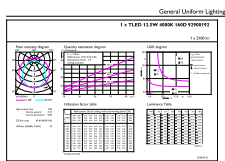
### Dimensional drawing



TLED master HE 2100lm 12.35w 4ft 4000k

Product	D1	D2	A1	A2	A3
MASTER LEDtube 1200mm HO 12.5W 840 T8	25.8 mm	28 mm	1198.2 mm	1205.3 mm	1212.4 mm

## Photometric data

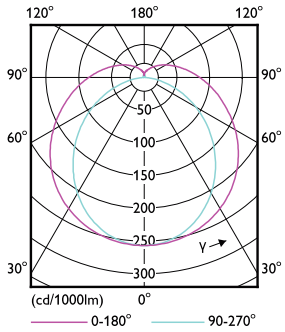


LEDtube MAS HO 12.5W G13 840 16D ND

LEDtube MAS HO G13

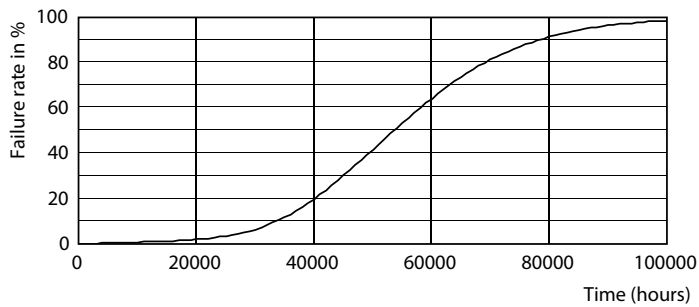
# MASTER LEDtube EM/Mains

## Photometric data

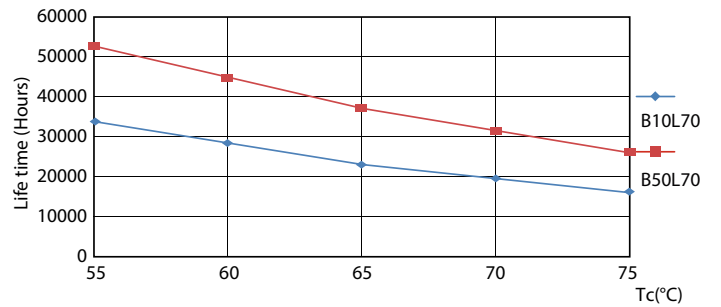


LEDtube T8 MAS HO G13

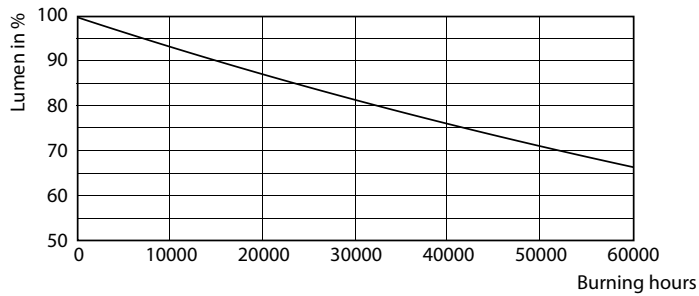
## Lifetime



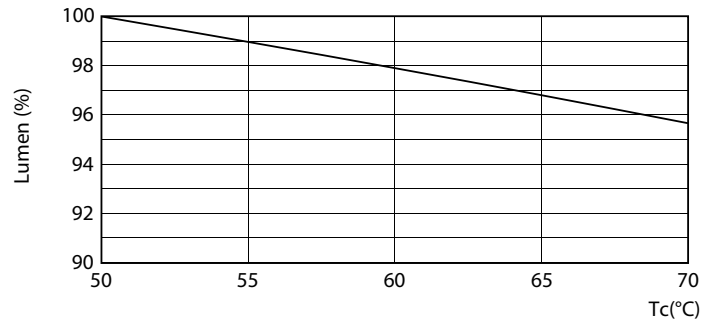
LEDtube T8 MAS HO G13



LEDtube T8 MAS HO G13



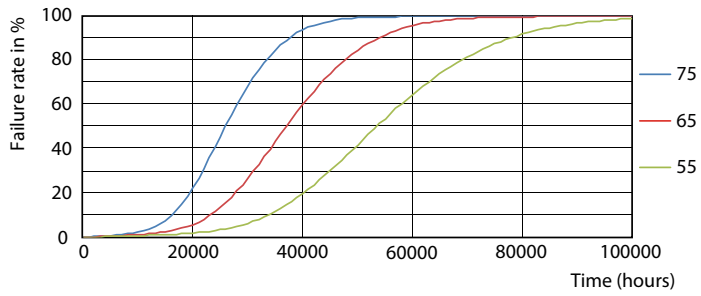
LEDtube T8 MAS HO G13



LEDtube T8 MAS HO 12.5W G13

# MASTER LEDtube EM/Mains

## Lifetime



LEDtube T8 MAS HO G13

