

MASTER LEDtube EM/ Mains T8



MAS LEDtube 1200mm HO 12.5W 865 T8

The Philips MASTER LEDtube integrates a LED light source into a traditional fluorescent form factor. Its unique design creates a perfectly uniform visual appearance, which cannot be distinguished from traditional fluorescent. These T8 LED tubes are the right choice for absolute performance and are designed to stand up to everyday conditions. Unparalleled savings thanks to low energy consumption and an exceptionally long lifetime ensure this tube masters every demanding application.

Warnings and Safety

- NOTE: The overall energy efficiency and light distribution of any installation that uses these lamps will be determined by the design of the installation.

Product data

General Information	
Cap-Base	G13 ROT
Nominal lifetime	75,000 hour(s)
Switching Cycle	200,000
Lighting Technology	LED
Flux measurement reference	Sphere
CE mark	Yes
EU RoHS compliant	Yes

Light Technical	
Color Code	865 [CCT of 6500K]
Beam Angle (Nom)	160 degree(s)
Luminous Flux	2,100 lm
Color Designation	Cool Daylight

Correlated Color Temperature (Nom)	6500 K
Luminous Efficacy (rated) (Nom)	168 lm/W
Color Consistency	<6
Color rendering index (CRI)	80
LLMF At End Of Nominal Lifetime (Nom)	70 %
Flickering value (PstLM) - Flickering value as per EN 61000-3-3	0.5
Stroboscopic effect visibility measure (SVM)	0.2
Photobiological safety according to EN 62471	RG0

Operating and Electrical	
Line Frequency	50 to 60 Hz
Input Frequency	50 to 60 Hz
Power Consumption	12.5 W

MASTER LEDtube EM/Mains T8

Lamp Current (Max)	63 mA
Lamp Current (Min)	52 mA
Starting Time (Nom)	0.5 s
Warm-up time to 60% light	0.5 s
Power Factor (Fraction)	0.9
Voltage (Nom)	220-240 V
LED alternative to fluorescent lamp power	36 W
Inrush current at mains	8
Max. lamp no. on MCB B type 10A - Mains	90
Max. lamp no. on MCB B type 10A – EM ballast without Comp. Cap.	115
Max. lamp no. on MCB B type 10A – EM ballast with Comp. Cap.	15
Max. lamp no. on MCB B type 16A - Mains	150
Max. lamp no. on MCB B type 16A – EM ballast without Comp. Cap.	190
Max. lamp no. on MCB B type 16A – EM ballast with Comp. Cap.	25
Ballast Compatibility	EM/Mains

Temperature

Ambient temperature range	-20 °C to 45 °C
T-Case Maximum (Nom)	50 °C

Controls and Dimming

Dimmable	No
----------	----

Mechanical and Housing

Bulb Finish	Frosted
-------------	---------

Bulb Material	Plastic
Product Length	1,200 mm
Bulb Shape	T8

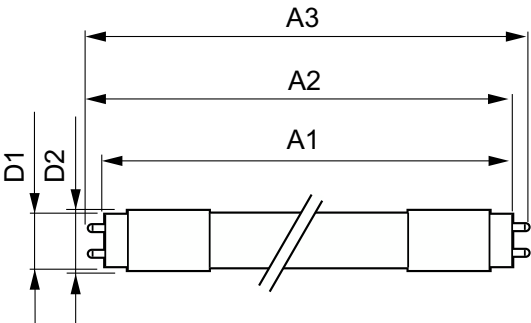
Approval and Application

Energy Efficiency Class	C
Energy Saving Product	Yes
Approval Marks	RoHS compliance TUV CE marking KEMA Keur certificate
Energy Consumption kWh/1000 h	13 kWh
EPREL Registration Number	1206968

Product Data

Order product name	MAS LEDtube 1200mm HO 12.5W 865 T8
Full product name	MAS LEDtube 1200mm HO 12.5W 865 T8
Full product code	871869959239400
Order code	929001922802
Material Nr. (12NC)	929001922802
Numerator - Quantity Per Pack	1
EAN/UPC - Product/Case	8718699592394
Numerator - Packs per outer box	10
EAN/UPC - Case	8718699592400

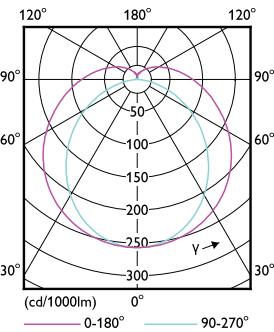
Dimensional drawing



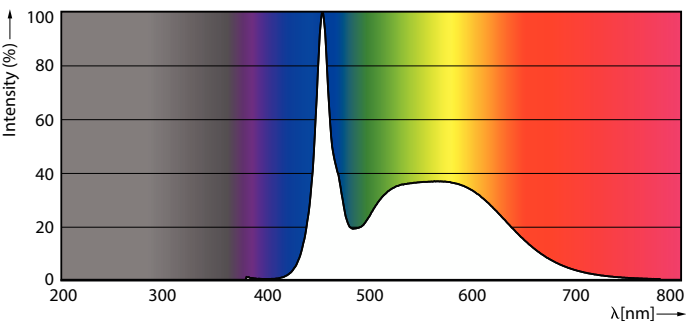
Product	D1	D2	A1	A2	A3
MAS LEDtube 1200mm HO 12.5W 865 T8	25.8 mm	28 mm	1,198.2 mm	1,205.3 mm	1,212.4 mm

MASTER LEDtube EM/Mains T8

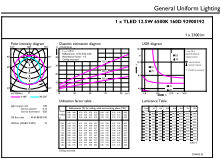
Photometric data



Light Distribution Diagram - MAS LEDtube 1200mm HO 12.5W 865 T8



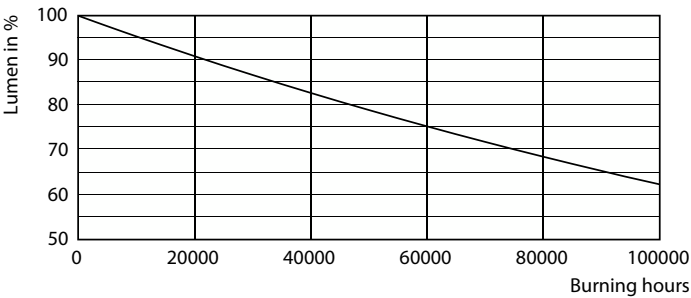
Spectral Power Distribution Colour - MAS LEDtube 1200mm HO 12.5W 865 T8



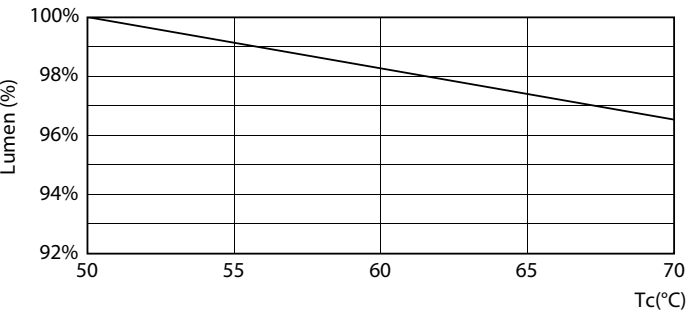
Technical Parameters T8 Page Lighting T8 Page T8

General uniform lighting - MAS LEDtube 1200mm HO 12.5W 865 T8

Lifetime



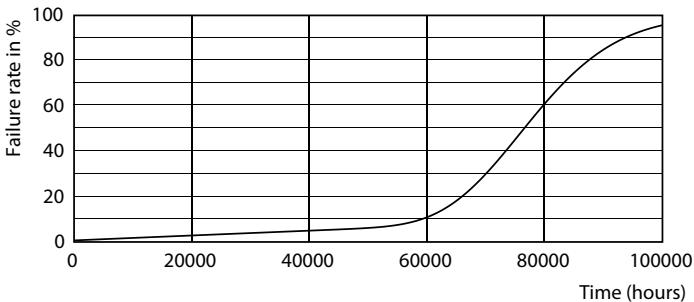
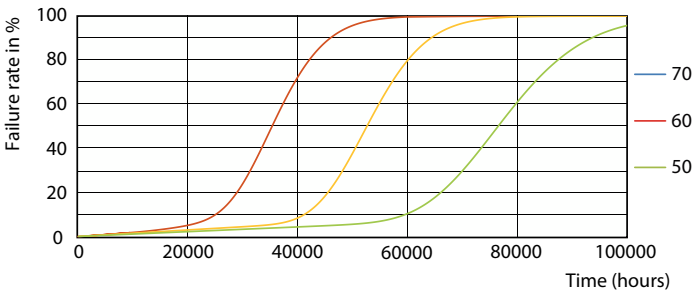
Lumen Maintenance Diagram - MAS LEDtube 1200mm HO 12.5W 865 T8



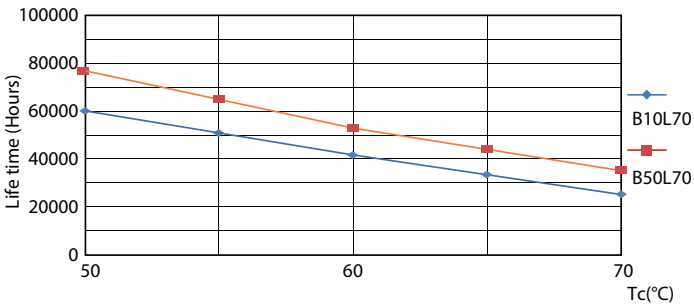
Lumen Maintenance Diagram - MAS LEDtube 1200mm HO 12.5W 865 T8

MASTER LEDtube EM/Mains T8

Lifetime



Life Expectancy Diagram - MAS LEDtube 1200mm HO 12.5W 865 T8



Life Expectancy Diagram - MAS LEDtube 1200mm HO 12.5W 865 T8

Life Expectancy Diagram - MAS LEDtube 1200mm HO 12.5W 865 T8

