



MASTER LEDtube EM/ Mains

MASTER LEDtube 1500mm HO 18.2W 830 T8

The Philips MASTER LEDtube integrates a LED light source into a traditional fluorescent form factor. Its unique design creates a perfectly uniform visual appearance which cannot be distinguished from traditional fluorescent. This product is the ideal solution for up lighting in general lighting applications.

Product data

General Information	
Cap base	G13 [Medium Bi-Pin Fluorescent]
Nominal lifetime (nom.)	60000 h
Switching cycle	200000X

Light Technical	
Colour Code	830 [CCT of 3,000 K]
Technical Beam Angle (Nom)	160 °
Lamp Luminous Flux 25°C EL (Nom)	2900 lm
Colour Temperature, horizontal (Nom)	3000 K
Colour consistency	<6
Colour Rendering Index,horiz (Nom)	83
LLMF at end of nominal lifetime (nom.)	70 %

Operating and Electrical	
Input frequency	50 to 60 Hz
Power (Rated) (Nom)	18.2 W
Lamp current (max.)	87 mA
Lamp current (min.)	79 mA
Starting time (nom.)	0.5 s

Warm-up time to 60% light (nom.)	0.5 s
Power factor (nom.)	0.9
Voltage (Nom)	220-240 V

Temperature	
T ambient (max.)	45 °C
T ambient (min.)	-20 °C
T storage (max.)	65 °C
T storage (min.)	-40 °C
T-Case maximum (nom.)	55 °C

Controls and Dimming	
Dimmable	No

Mechanical and Housing	
Product length	1500 mm

Approval and Application	
Energy efficiency label (EEL)	A++
Energy-saving product	Yes

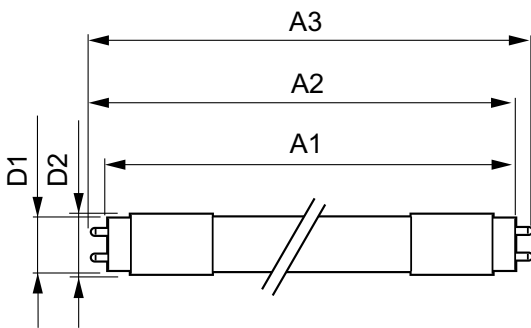
MASTER LEDtube EM/Mains

Approval marks	RoHS compliance CE marking KEMA Keur certificate
Energy Consumption kWh/1000 h	19 kWh
Product Data	
Full product code	871869959241700
Order product name	MASTER LEDtube 1500mm HO 18.2W 830 T8
EAN/UPC – product	8718699592417

Order code	929001922902
Numerator – quantity per pack	1
Numerator – packs per outer box	10
Material no. (12NC)	929001922902
Net weight (piece)	0.310 kg

Warnings and Safety

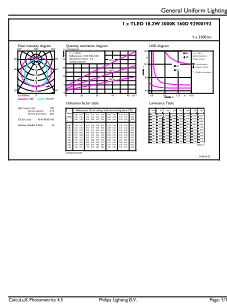
Dimensional drawing



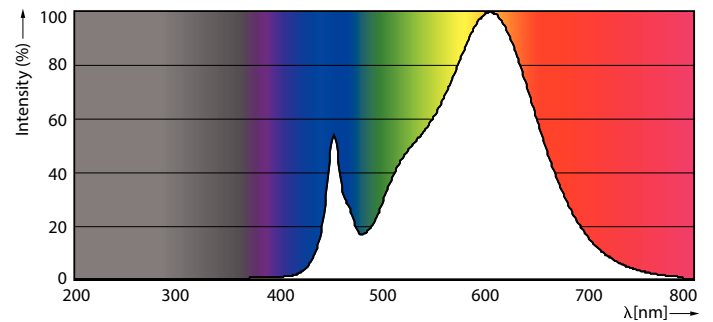
TLED master HE 2900lm 18.2w 5ft 3000k

Product	D1	D2	A1	A2	A3
MASTER LEDtube 1500mm HO 18.2W 830 T8	25.8 mm	28 mm	1498.8 mm	1505.9 mm	1513 mm

Photometric data



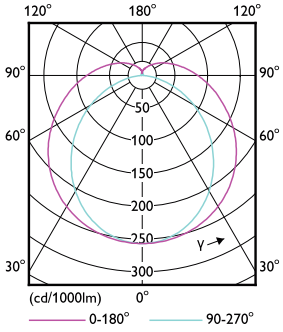
LEDtube MAS HO 18.2W G13 830 16D ND



LEDtube MAS HO 12.5W G13 830 16D ND

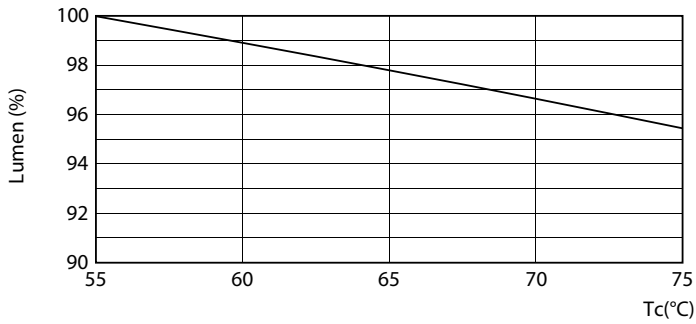
MASTER LEDtube EM/Mains

Photometric data

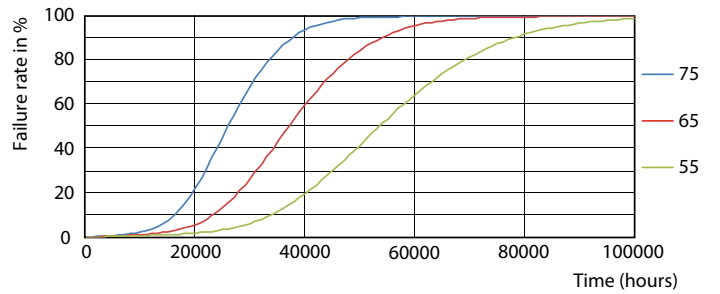


LEDtube MAS HO 12.5W G13 830 16D ND

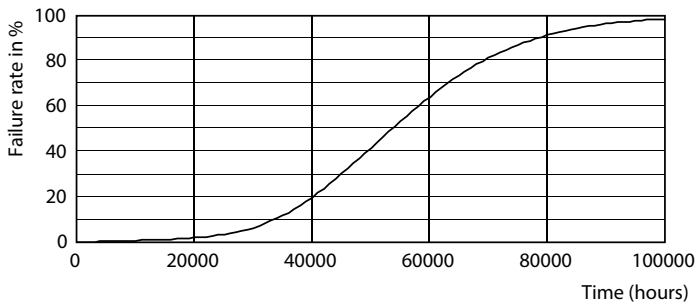
Lifetime



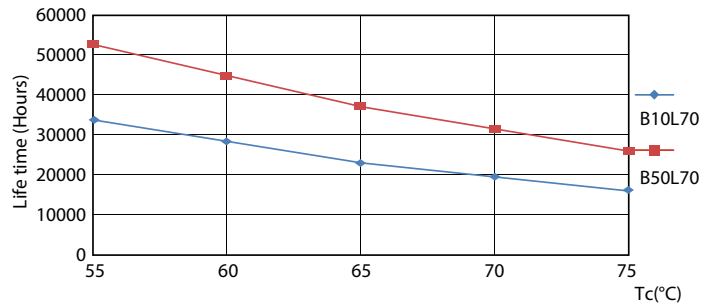
LEDtube MAS HO 18.2W G13 830 16D ND



LEDtube MAS HO 12.5W G13 830 16D ND



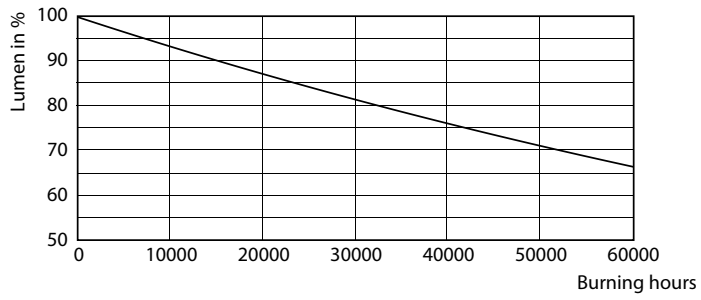
LEDtube MAS HO 12.5W G13 830 16D ND



LEDtube MAS HO 12.5W G13 830 16D ND

MASTER LEDtube EM/Mains

Lifetime



LEDtube MAS HO G13

