



MASTER LEDtube EM/ Mains T8

MASTER LEDtube 1500mm HO 18.2W 840 T8

The Philips MASTER LEDtube integrates a LED light source into a traditional fluorescent form factor. Its unique design creates a perfectly uniform visual appearance which cannot be distinguished from traditional fluorescent. For those that are looking for value for money within limited budget and re-lamping efforts for better light effect and lifetime.

Product data

General Information	
Cap-Base	G13 [Medium Bi-Pin Fluorescent]
EU RoHS compliant	Yes
Nominal Lifetime (Nom)	60000 h
Switching Cycle	200000X
Light Technical	
Color Code	840 [CCT of 4000K]
Beam Angle (Nom)	160 °
Luminous Flux (Nom)	3100 lm
Correlated Color Temperature (Nom)	4000 K
Color Consistency	<6
Color Rendering Index (Nom)	83
LLMF At End Of Nominal Lifetime (Nom)	70 %
Operating and Electrical	
Input Frequency	50 to 60 Hz
Power (Nom)	18.2 W
Lamp Current (Max)	87 mA
Lamp Current (Min)	79 mA

Starting Time (Nom)	0.5 s
Warm Up Time to 60% Light (Nom)	0.5 s
Power Factor (Nom)	0.9
Voltage (Nom)	220-240 V
Temperature	
T-Ambient (Max)	45 °C
T-Ambient (Min)	-20 °C
T-Storage (Max)	65 °C
T-Storage (Min)	-40 °C
T-Case Maximum (Nom)	55 °C
Controls and Dimming	
Dimmable	No
Mechanical and Housing	
Bulb Material	Plastic
Product Length	1500 mm

MASTER LEDtube EM/Mains T8

Approval and Application

Energy Efficiency Label (EEL)	A++
Energy Saving Product	Yes
Approval Marks	RoHS compliance TUV CE marking KEMA Keur certificate
Energy Consumption kWh/1000 h	19 kWh

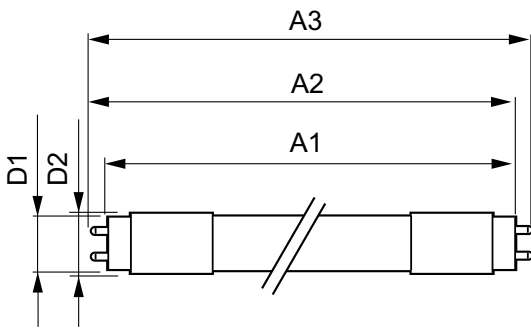
Product Data

Full product code	871869959243100
-------------------	-----------------

Order product name	MASTER LEDtube 1500mm HO 18.2W 840 T8
EAN/UPC - Product	8718699592431
Order code	929001923002
Numerator - Quantity Per Pack	1
Numerator - Packs per outer box	10
Material Nr. (12NC)	929001923002
Net Weight (Piece)	0.310 kg

Warnings and Safety

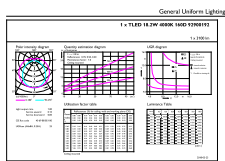
Dimensional drawing



TLED master HE 3100lm 18.2w 5ft 4000k

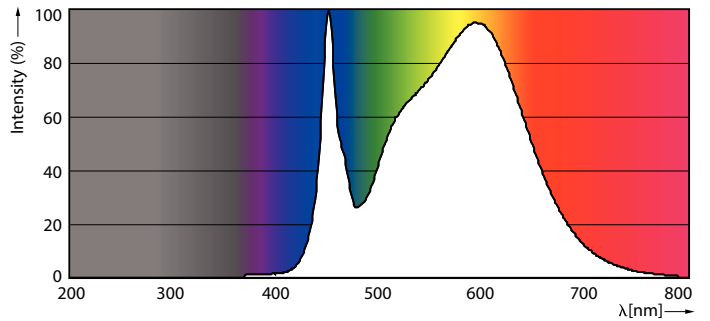
Product	D1	D2	A1	A2	A3
MASTER LEDtube 1500mm HO 18.2W 840 T8	25.8 mm	28 mm	1498.8 mm	1505.9 mm	1513 mm

Photometric data



General Uniform Lighting
1 x TLED 18.2W 840K 1500 1200x112
Page 11

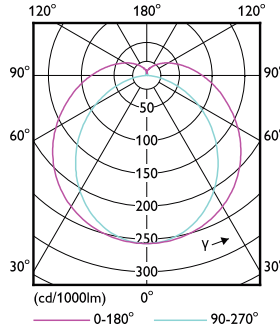
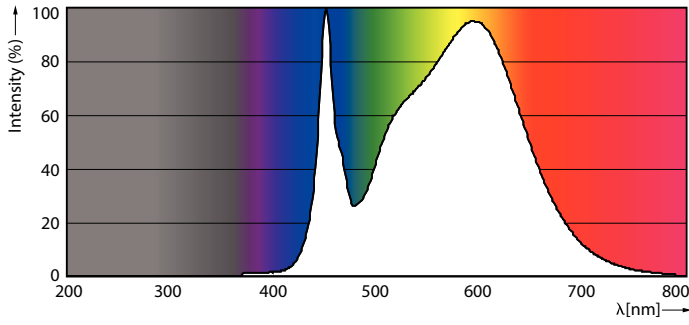
LEDtube MAS HO 18.2W G13 840 16D ND



LEDtube MAS HO G13

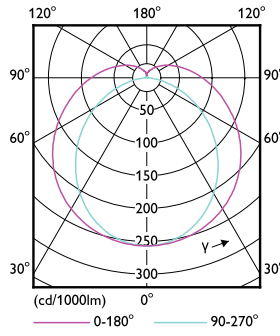
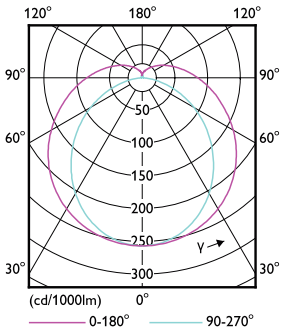
MASTER LEDtube EM/Mains T8

Photometric data



LEDtube MAS HO 12.5W G13 840 16D ND

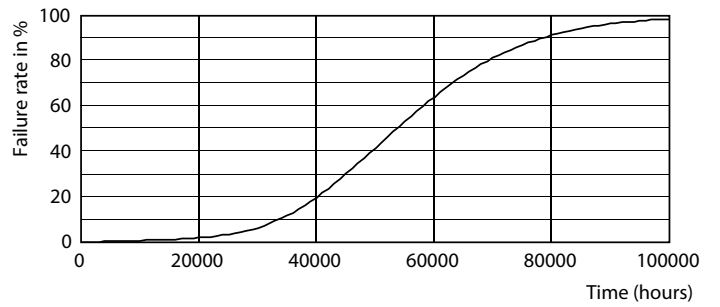
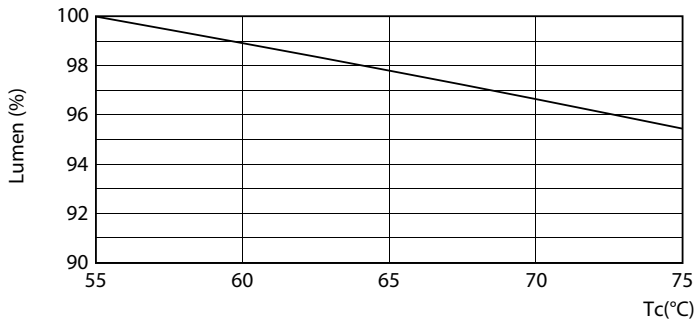
LEDtube MAS HO G13



LEDtube T8 MAS HO G13

LEDtube MAS HO 12.5W G13 830 16D ND

Lifetime

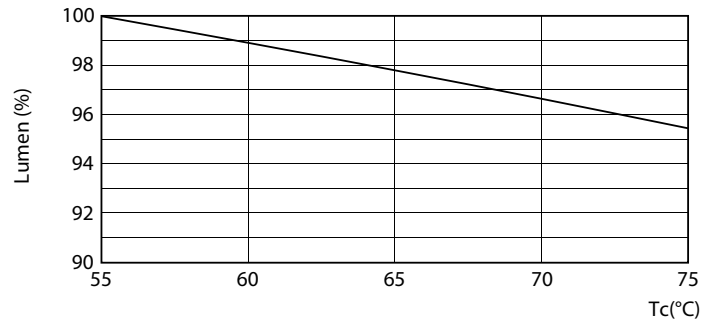
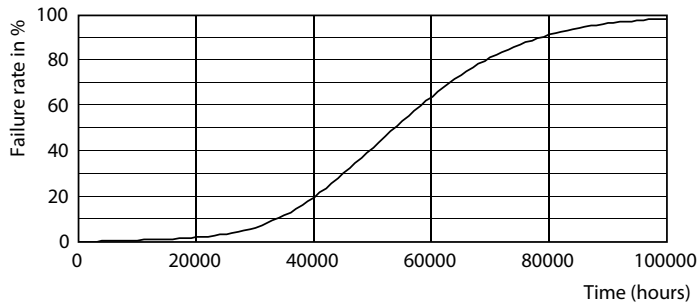


LEDtube T8 MAS HO 18.2W G13

LEDtube MAS HO G13

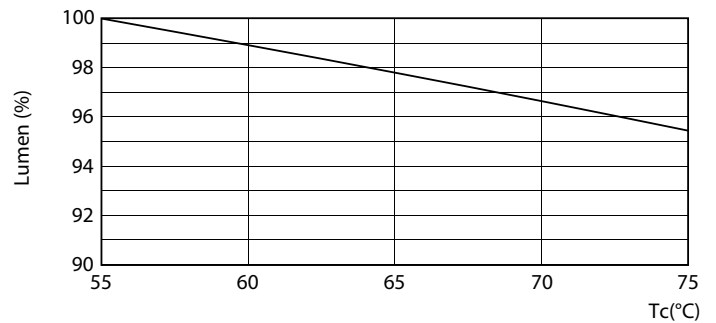
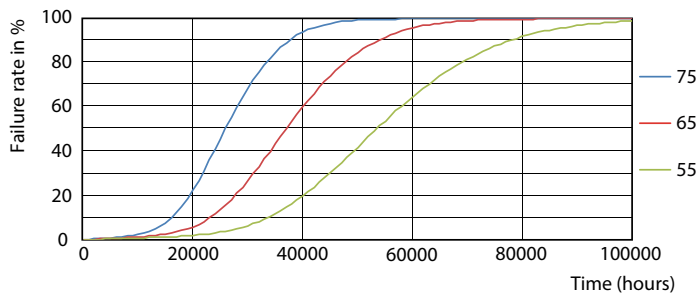
MASTER LEDtube EM/Mains T8

Lifetime



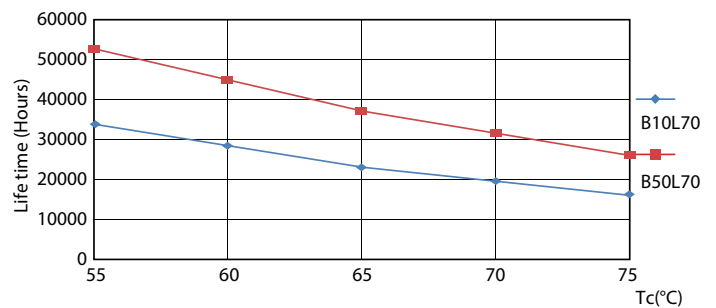
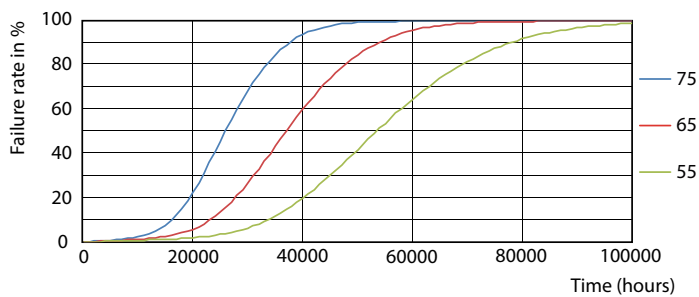
LEDtube T8 MAS HO G13

LEDtube MAS HO 18.2W G13 830 16D ND



LEDtube MAS HO G13

LEDtube MAS HO 18.2W G13

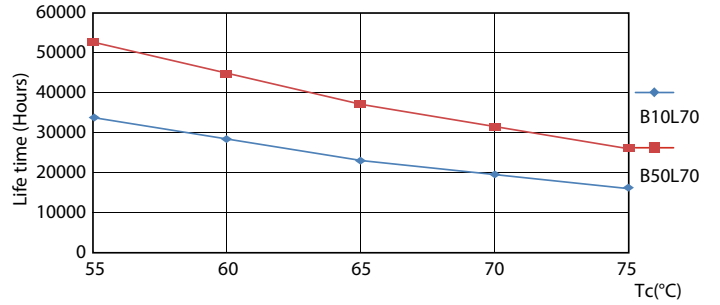
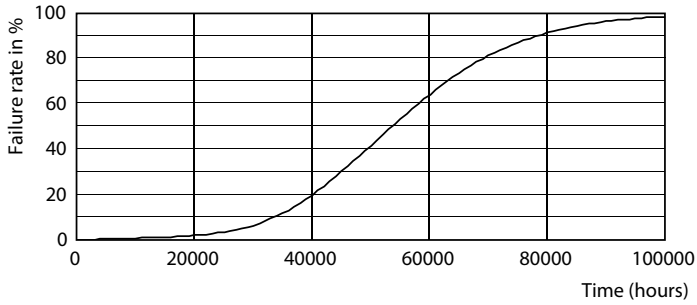


LEDtube MAS HO 12.5W G13 830 16D ND

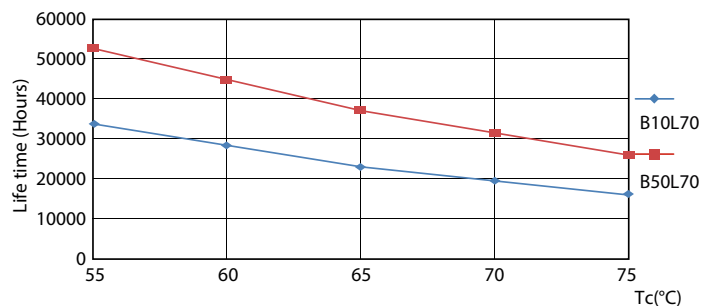
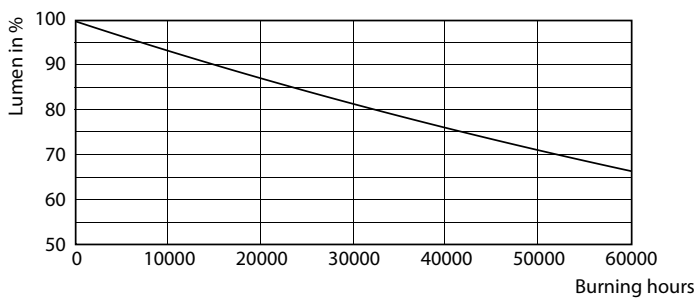
LEDtube T8 MAS HO G13

MASTER LEDtube EM/Mains T8

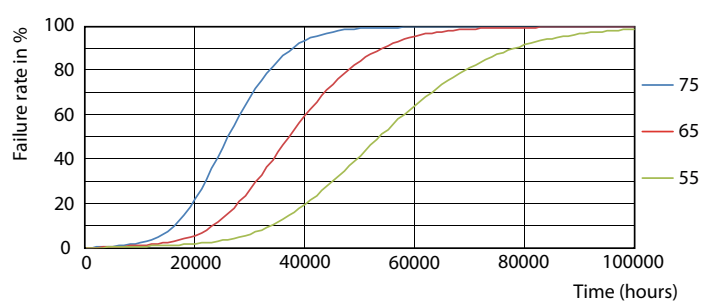
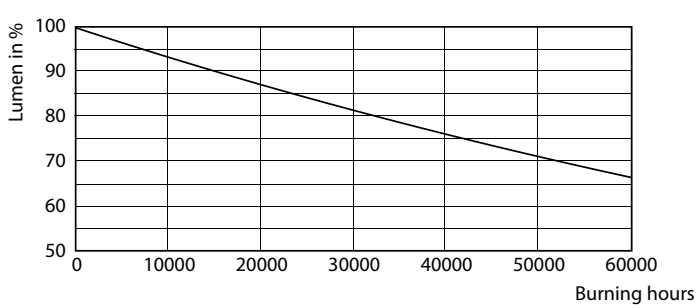
Lifetime



LEDtube MAS HO 12.5W G13 830 16D ND



LEDtube T8 MAS HO G13



LEDtube MAS HO G13

MASTER LEDtube EM/Mains T8

