

MASTER LEDtube EM/ Mains T8



MAS LEDtube 1500mm HO 18.2W 865 T8

The Philips MASTER LEDtube integrates a LED light source into a traditional fluorescent form factor. Its unique design creates a perfectly uniform visual appearance, which cannot be distinguished from traditional fluorescent. These T8 LED tubes are the right choice for absolute performance and are designed to stand up to everyday conditions. Unparalleled savings thanks to low energy consumption and an exceptionally long lifetime ensure this tube masters every demanding application.

Warnings and Safety

- NOTE: The overall energy efficiency and light distribution of any installation that uses these lamps will be determined by the design of the installation.

Product data

General Information	
Cap-Base	G13 ROT
Nominal lifetime	75,000 hour(s)
Switching Cycle	200,000
Lighting Technology	LED
Flux measurement reference	Sphere
CE mark	Yes
EU RoHS compliant	Yes
Light Technical	
Color Code	865 [CCT of 6500K]
Beam Angle (Nom)	160 degree(s)
Luminous Flux	3,100 lm
Color Designation	Cool Daylight

Correlated Color Temperature (Nom)	6500 K
Luminous Efficacy (rated) (Nom)	170 lm/W
Color Consistency	<6
Color rendering index (CRI)	80
LLMF At End Of Nominal Lifetime (Nom)	70 %
Flickering value (PstLM) - Flickering value as per EN 61000-3-3	0.5
Stroboscopic effect visibility measure (SVM)	0.2
Photobiological safety according to EN 62471	RG0
Operating and Electrical	
Line Frequency	50 to 60 Hz
Input Frequency	50 to 60 Hz
Power Consumption	18.2 W

MASTER LEDtube EM/Mains T8

Lamp Current (Max)	93 mA
Lamp Current (Min)	77 mA
Starting Time (Nom)	0.5 s
Warm-up time to 60% light	0.5 s
Power Factor (Fraction)	0.9
Voltage (Nom)	220-240 V
LED alternative to fluorescent lamp power	58 W
Inrush current at mains	8.4
Max. lamp no. on MCB B type 10A - Mains	80
Max. lamp no. on MCB B type 10A – EM ballast without Comp. Cap.	80
Max. lamp no. on MCB B type 10A – EM ballast with Comp. Cap.	10
Max. lamp no. on MCB B type 16A - Mains	130
Max. lamp no. on MCB B type 16A – EM ballast without Comp. Cap.	135
Max. lamp no. on MCB B type 16A – EM ballast with Comp. Cap.	16
Ballast Compatibility	EM/Mains

Temperature

Ambient temperature range	-20 °C to 45 °C
T-Case Maximum (Nom)	55 °C

Controls and Dimming

Dimmable	No
----------	----

Mechanical and Housing

Bulb Finish	Frosted
-------------	---------

Bulb Material	Plastic
Product Length	1,500 mm
Bulb Shape	T8

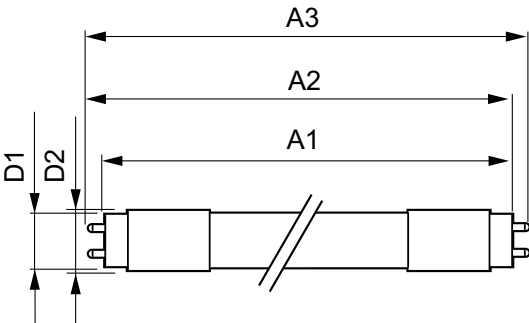
Approval and Application

Energy Efficiency Class	C
Energy Saving Product	Yes
Approval Marks	RoHS compliance TUV CE marking KEMA Keur certificate
Energy Consumption kWh/1000 h	19 kWh
EPREL Registration Number	1206971

Product Data

Order product name	MAS LEDtube 1500mm HO 18.2W 865 T8
Full product name	MAS LEDtube 1500mm HO 18.2W 865 T8
Full product code	871869959245500
Order code	929001923102
Material Nr. (12NC)	929001923102
Numerator - Quantity Per Pack	1
EAN/UPC - Product/Case	8718699592455
Numerator - Packs per outer box	10
EAN/UPC - Case	8718699592462

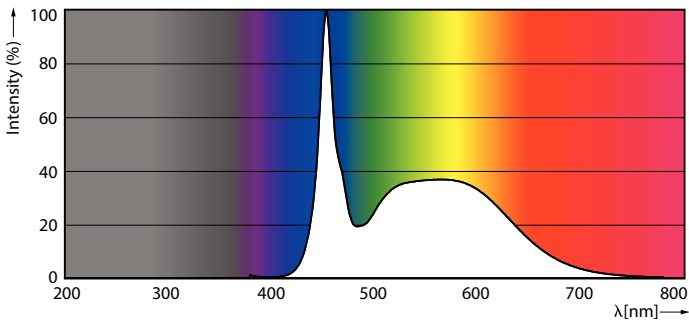
Dimensional drawing



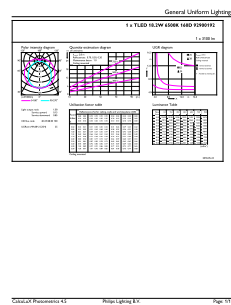
Product	D1	D2	A1	A2	A3
MAS LEDtube 1500mm HO 18.2W 865 T8	25.8 mm	28 mm	1,498.8 mm	1,505.9 mm	1,513 mm

MASTER LEDtube EM/Mains T8

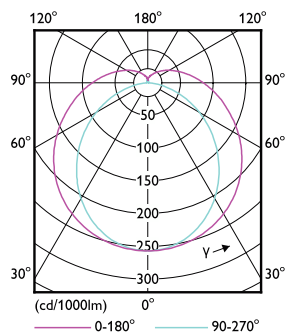
Photometric data



Spectral Power Distribution Colour - MAS LEDtube 1500mm HO 18.2W 865 T8

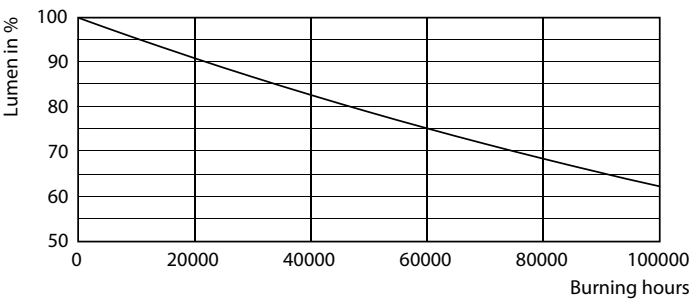


General uniform lighting - MAS LEDtube 1500mm HO 18.2W 865 T8

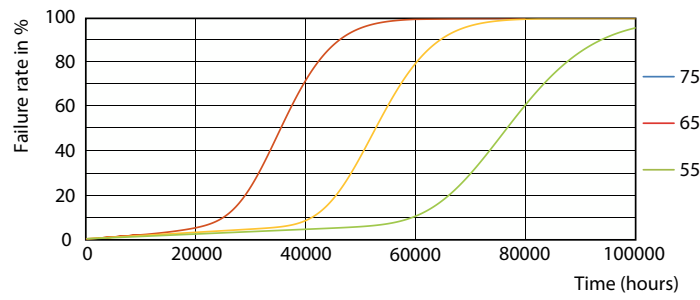


Light Distribution Diagram - MAS LEDtube 1500mm HO 18.2W 865 T8

Lifetime



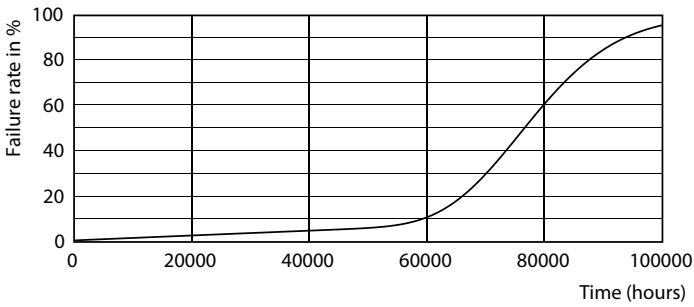
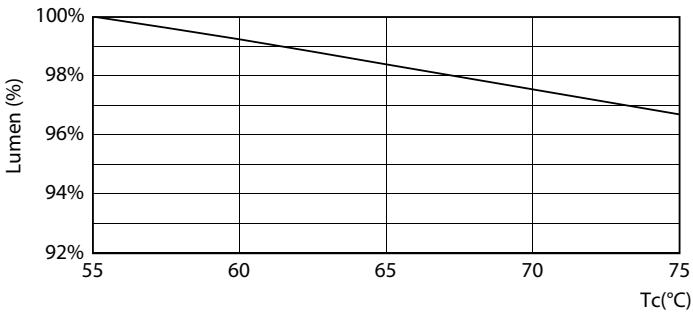
Lumen Maintenance Diagram - MAS LEDtube 1500mm HO 18.2W 865 T8



Life Expectancy Diagram - MAS LEDtube 1500mm HO 18.2W 865 T8

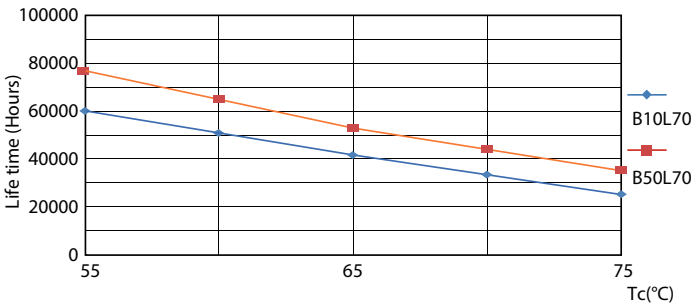
MASTER LEDtube EM/Mains T8

Lifetime



Lumen Maintenance Diagram - MAS LEDtube 1500mm HO 18.2W 865 T8

Life Expectancy Diagram - MAS LEDtube 1500mm HO 18.2W 865 T8



Life Expectancy Diagram - MAS LEDtube 1500mm HO 18.2W 865 T8

