



MASTER LEDtube EM/ Mains T8

MAS LEDtube 1200mm UO 16W 865 T8 G

The Philips MASTER LEDtube integrates a LED light source into a traditional fluorescent form factor. Its unique design creates a perfectly uniform visual appearance, which cannot be distinguished from traditional fluorescent. These T8 LED tubes are the right choice for absolute performance and are designed to stand up to everyday conditions. Unparalleled savings thanks to low energy consumption and an exceptionally long lifetime ensure this tube masters every demanding application.

Warnings and Safety

- NOTE: The overall energy efficiency and light distribution of any installation that uses these lamps will be determined by the design of the installation.

Product data

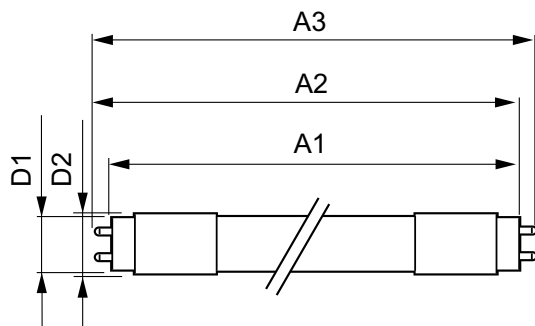
General Information		Color Consistency	
Cap-Base	G13 [Medium Bi-Pin Fluorescent]	Color Consistency	<6
Nominal lifetime	50,000 hour(s)	Color rendering index (CRI)	83
Switching Cycle	200,000	LLMF At End Of Nominal Lifetime (Nom)	70 %
Lighting Technology	LED	Operating and Electrical	
EU RoHS compliant	Yes	Line Frequency	50 to 60 Hz
Light Technical		Input Frequency	50 to 60 Hz
Color Code	865 [CCT of 6500K]	Power Consumption	16 W
Beam Angle (Nom)	160 degree(s)	Lamp Current (Max)	75 mA
Luminous Flux	2,500 lm	Lamp Current (Min)	68 mA
Color Designation	Cool Daylight	Starting Time (Nom)	0.5 s
Correlated Color Temperature (Nom)	6500 K	Warm-up time to 60% light	0.5 s
Luminous Efficacy (rated) (Nom)	156.00 lm/W	Power Factor (Fraction)	0.9

MASTER LEDtube EM/Mains T8

Voltage (Nom)	220-240 V
Temperature	
Ambient temperature range	-20 °C to 45 °C
T-Case Maximum (Nom)	55 °C
Controls and Dimming	
Dimmable	No
Mechanical and Housing	
Product Length	1,200 mm
Bulb Shape	Tube, double-ended
Approval and Application	
Energy Saving Product	Yes
Approval Marks	TUV CE marking RoHS compliance KEMA Keur certificate

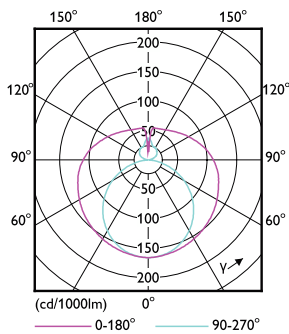
Energy Consumption kWh/1000 h	16 kWh
Product Data	
Order product name	MAS LEDtube 1200mm UO 16W 865 T8 G
Full product name	MAS LEDtube 1200mm UO 16W 865 T8 G
Full product code	871869959508100
Order code	929001923602
Material Nr. (12NC)	929001923602
Numerator - Quantity Per Pack	1
EAN/UPC - Product/Case	8718699595081
Numerator - Packs per outer box	10
EAN/UPC - Case	8718699595098

Dimensional drawing

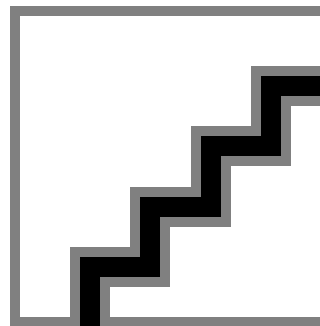


Product	D1	D2	A1	A2	A3
MAS LEDtube 1200mm UO 16W 865 T8 G	25.8 mm	28 mm	1,198.2 mm	1,205.3 mm	1,212.4 mm

Photometric data



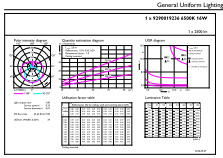
Light Distribution Diagram - MAS LEDtube 1200mm UO 16W 865 T8 G



Spectral Power Distribution Colour - MAS LEDtube 1200mm UO 16W 865 T8 G

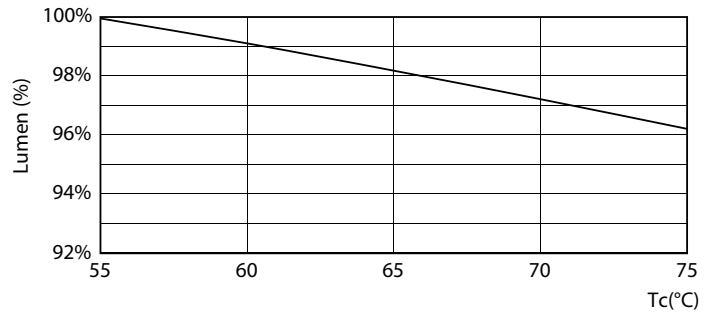
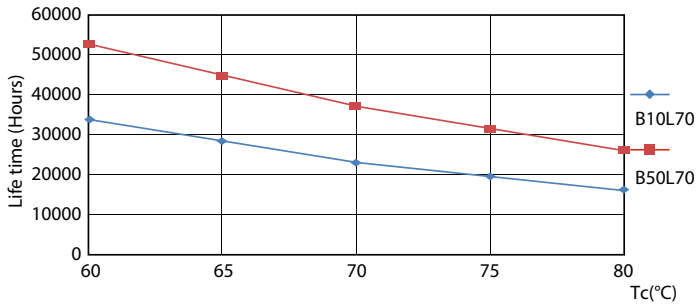
MASTER LEDtube EM/Mains T8

Photometric data



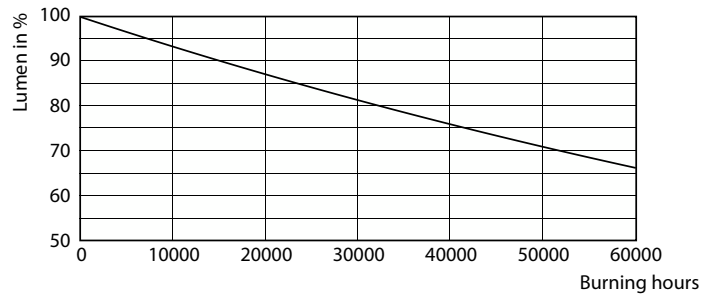
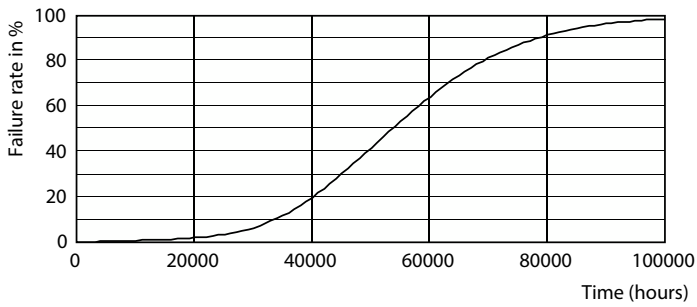
General uniform lighting - MAS LEDtube 1200mm UO 16W 865 T8 G

Lifetime



Life Expectancy Diagram - MAS LEDtube 1200mm UO 16W 865 T8 G

Lumen Maintenance Diagram - MAS LEDtube 1200mm UO 16W 865 T8 G

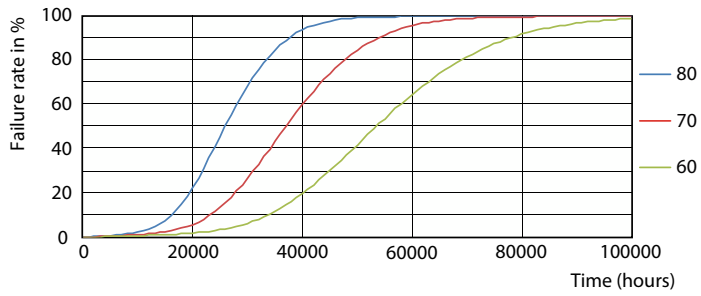


Life Expectancy Diagram - MAS LEDtube 1200mm UO 16W 865 T8 G

Lumen Maintenance Diagram - MAS LEDtube 1200mm UO 16W 865 T8 G

MASTER LEDtube EM/Mains T8

Lifetime



Life Expectancy Diagram - MAS LEDtube 1200mm UO 16W 865 T8 G

