



MASTER LEDtube EM/ Mains

MASTER LEDtube 1500mm UO 24W 830 T8 G

The Philips MASTER LEDtube integrates a LED light source into a traditional fluorescent form factor. Its unique design creates a perfectly uniform visual appearance which cannot be distinguished from traditional fluorescent. For those that are looking for value for money within limited budget and re-lamping efforts for better light effect and lifetime.

Product data

| General Information | |
|------------------------|----------------------------------|
| Cap-Base | G13 [Medium Bi-Pin Fluorescent] |
| EU RoHS compliant | Yes |
| Nominal Lifetime (Nom) | 50000 h |
| Switching Cycle | 200000X |

| Light Technical | |
|---------------------------------------|---------------------|
| Colour Code | 830 [CCT of 3000K] |
| Beam Angle (Nom) | 240 ° |
| Luminous Flux (Nom) | 3400 lm |
| Colour Temperature, horizontal (Nom) | 3000 K |
| Color Consistency | <6 |
| Colour Rendering Index horiz (Nom) | 83 |
| LLMF At End Of Nominal Lifetime (Nom) | 70 % |

| Operating and Electrical | |
|--------------------------|-------------|
| Input Frequency | 50 to 60 Hz |
| Power (Rated) (Nom) | 24 W |
| Lamp Current (Max) | 112 mA |
| Lamp Current (Min) | 103 mA |

| | |
|---------------------------------|-----------|
| Starting Time (Nom) | 0.5 s |
| Warm Up Time to 60% Light (Nom) | 0.5 s |
| Power Factor (Nom) | 0.9 |
| Voltage (Nom) | 220-240 V |

| Temperature | |
|----------------------|--------|
| T-Ambient (Max) | 45 °C |
| T-Ambient (Min) | -20 °C |
| T-Storage (Max) | 65 °C |
| T-Storage (Min) | -40 °C |
| T-Case Maximum (Nom) | 60 °C |

| Controls and Dimming | |
|----------------------|----|
| Dimmable | No |

| Mechanical and Housing | |
|------------------------|---------|
| Product Length | 1500 mm |

| Approval and Application | |
|--------------------------|-----|
| Energy Efficiency Label | A++ |

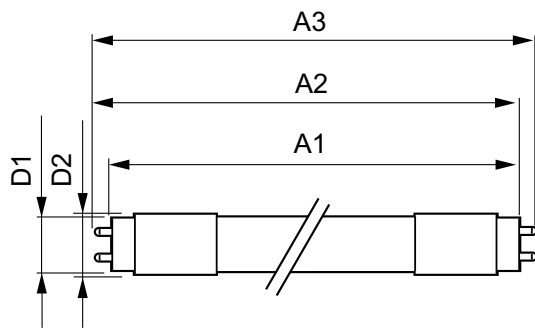
MASTER LEDtube EM/Mains

| | |
|-------------------------------|--|
| Energy Saving Product | Yes |
| Approval Marks | TUV CE marking RoHS compliance KEMA Keur certificate |
| Energy Consumption kWh/1000 h | 24 kWh |
| Product Data | |
| Full product code | 871869959510400 |
| Order product name | MASTER LEDtube 1500mm UO 24W 830 T8 G |

| | |
|---------------------------------|---------------|
| EAN/UPC - Product | 8718699595104 |
| Order code | 59510400 |
| Numerator - Quantity Per Pack | 1 |
| Numerator - Packs per outer box | 10 |
| Material Nr. (12NC) | 929001923702 |
| Net Weight (Piece) | 0.310 kg |

Warnings and Safety

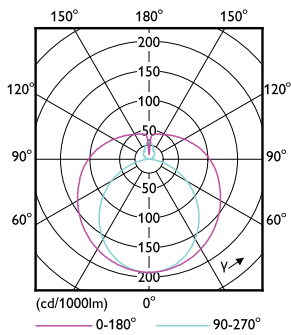
Dimensional drawing



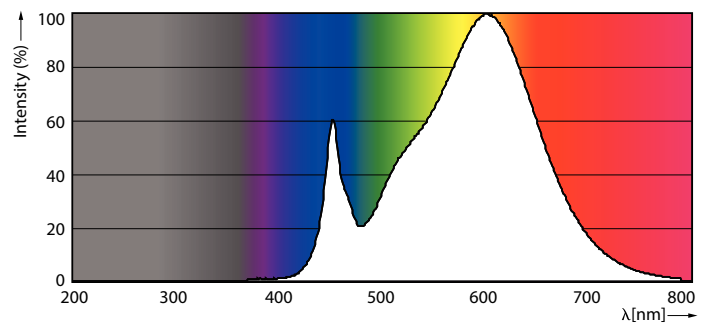
TLED master UO glass 3400lm 24w 3000k

| Product | D1 | D2 | A1 | A2 | A3 |
|---|---------|-------|-----------|-----------|-----------|
| MASTER LEDtube 1500mm UO 24W 830 T8 G | 25.8 mm | 28 mm | 1498.7 mm | 1505.8 mm | 1512.9 mm |

Photometric data



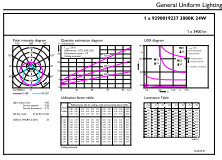
LEDtube UO 24W G13 830 24D ND



LEDtube UO 24W G13 830 24D ND

MASTER LEDtube EM/Mains

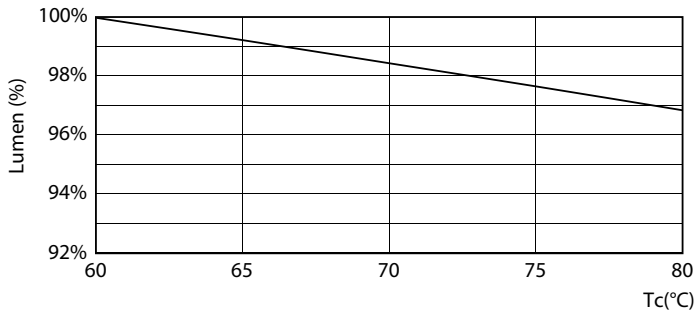
Photometric data



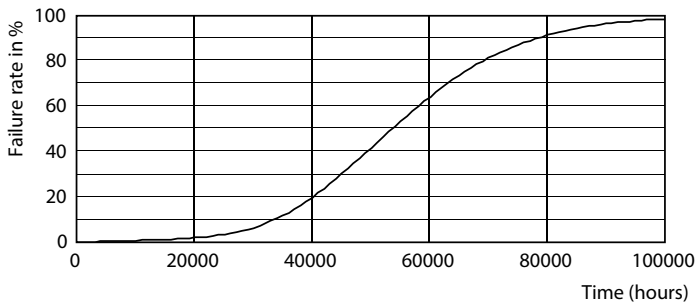
© 2020 Philips Lighting B.V. Page 11

LEDtube UO 24W G13 830 24D ND

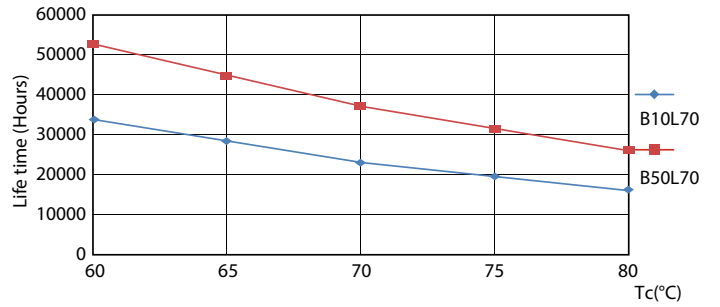
Lifetime



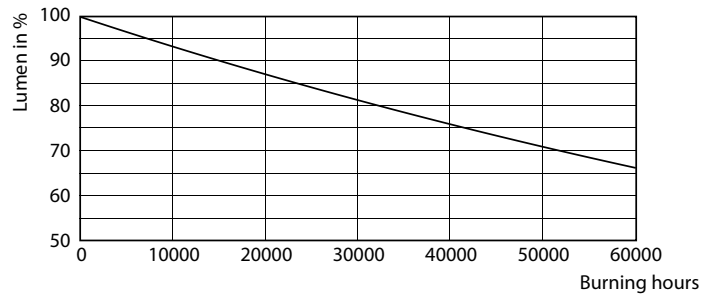
LEDtube UO 24W G13 830 24D ND



LEDtube UO 16W G13 830 24D ND



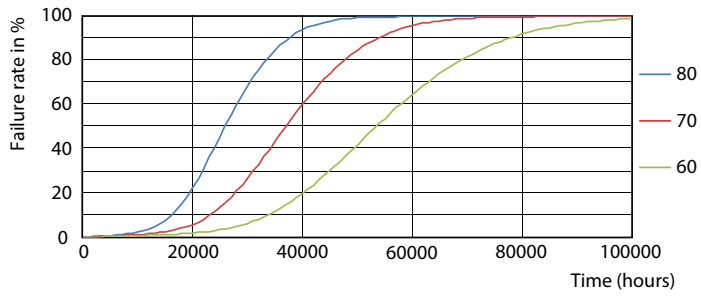
LEDtube UO 16W G13 830 24D ND



LEDtube UO 16W G13 830 24D ND

MASTER LEDtube EM/Mains

Lifetime



LEDtube UO 16W G13 830 24D ND

