



CorePro LED PLS

CorePro LED PLS 5W 830 2P G23 20/1

The Philips CorePro LED PLS integrates a LED light source into a traditional fluorescent form factor. This product is the ideal solution for uplampping in general lighting applications: it meets basic lighting requirements, offers significant energy savings, and is environment-friendly.

Product data

General Information	
Cap-Base	G23 [G23]
Nominal lifetime	30,000 hour(s)
Switching Cycle	50,000
Lighting Technology	LED
Flux measurement reference	Sphere
CE mark	Yes
EU RoHS compliant	Yes
Light Technical	
Color Code	830 [CCT of 3000K]
Beam Angle (Nom)	120 degree(s)
Luminous Flux	520 lm
Color Designation	White (WH)
Correlated Color Temperature (Nom)	3000 K
Luminous Efficacy (rated) (Nom)	104.00 lm/W
Color Consistency	<6
Color rendering index (CRI)	82
LLMF At End Of Nominal Lifetime (Nom)	70 %
Photobiological safety according to EN 62471	RG0
Operating and Electrical	
Line Frequency	50 to 60 Hz

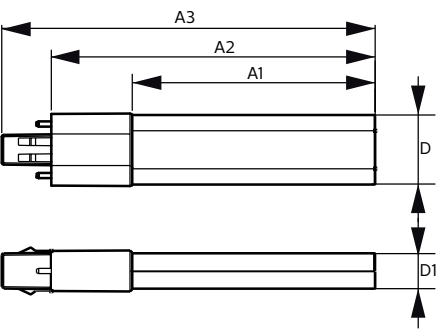
Input Frequency	50 to 60 Hz
Power Consumption	5 W
Starting Time (Nom)	0.5 s
Warm-up time to 60% light	0.5 s
Power Factor (Fraction)	0.9
Voltage (Nom)	220-240 V
LED alternative to fluorescent lamp power	11 W
Max. lamp no. on MCB B type 10A - Mains	159
Max. lamp no. on MCB B type 10A – EM ballast without Comp. Cap.	220
Max. lamp no. on MCB B type 10A – EM ballast with Comp. Cap.	30
Max. lamp no. on MCB B type 16A - Mains	306
Max. lamp no. on MCB B type 16A – EM ballast without Comp. Cap.	330
Max. lamp no. on MCB B type 16A – EM ballast with Comp. Cap.	49
Temperature	
Ambient temperature range	-4 °F to 113 °F
T-Case Maximum (Nom)	181 °F

CorePro LED PLS

Controls and Dimming	
Dimmable	No
Mechanical and Housing	
Bulb Material	Plastic
Product Length	6-3/4 inch
Bulb Shape	PL-S
Approval and Application	
Energy Efficiency Class	F
Energy Saving Product	Yes
Approval Marks	TUV CE marking RoHS compliance KEMA Keur certificate
Energy Consumption kWh/1000 h	5 kWh
EPREL Registration Number	403566

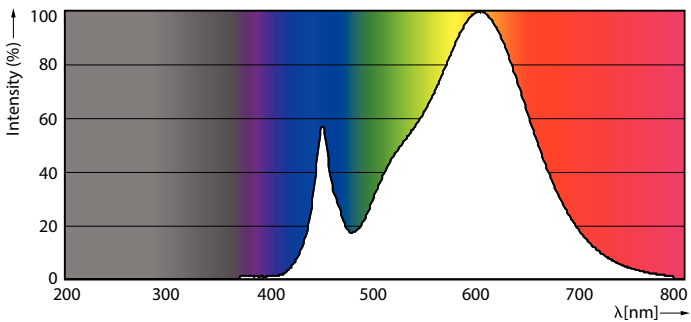
Product Data	
Order product name	CorePro LED PLS 5W 830 2P G23
Full product name	CorePro LED PLS 5W 830 2P G23 20/1
Full product code	871869959666800
Order code	344309
Material Nr. (12NC)	929001926302
Numerator - Quantity Per Pack	1
EAN/UPC - Product/Case	8718699596668
Numerator - Packs per outer box	20
EAN/UPC - Case	8718699596675

Dimensional drawing

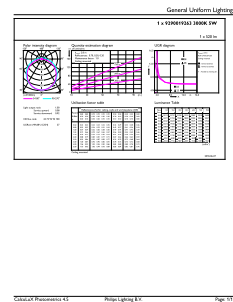


Product	D	D1	A1	A2	A3
CorePro LED PLS 5W 830 2P G23	1-1/4 inch	5/8 inch	4-1/4 inch	5-11/16 inch	6-9/16 inch

Photometric data

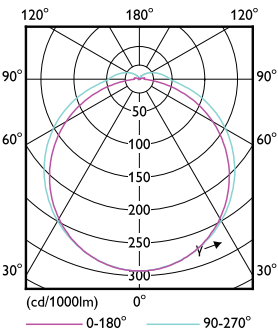


Spectral Power Distribution Colour - CorePro LED PLS 5W 830 2P G23



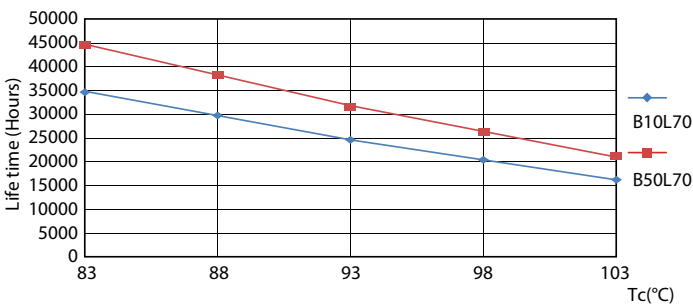
General uniform lighting - CorePro LED PLS 5W 830 2P G23

Photometric data

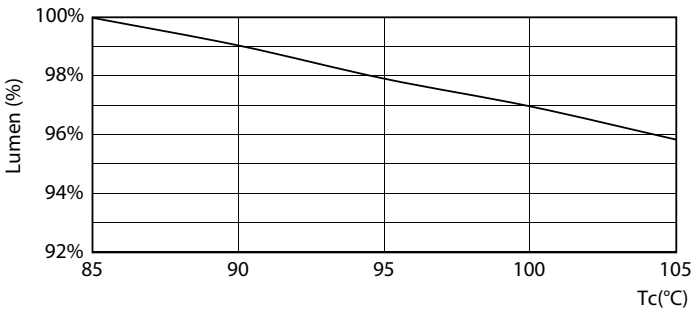


Light Distribution Diagram - CorePro LED PLS 5W 830 2P G23

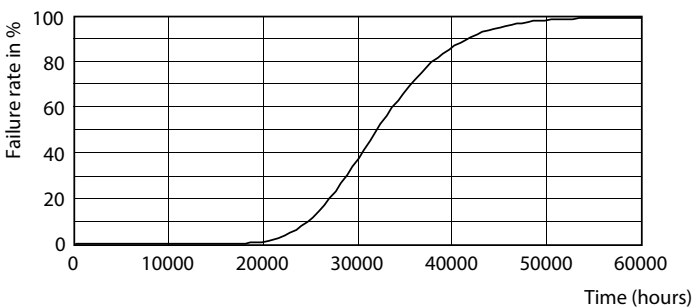
Lifetime



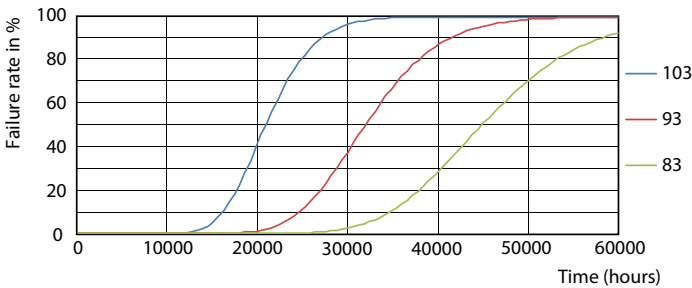
Life Expectancy Diagram - CorePro LED PLS 5W 830 2P G23



Lumen Maintenance Diagram - CorePro LED PLS 5W 830 2P G23



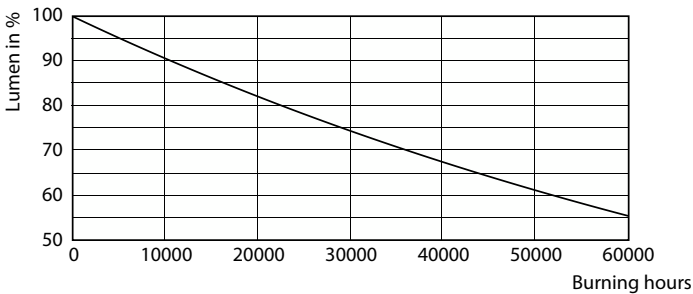
Life Expectancy Diagram - CorePro LED PLS 5W 830 2P G23



Life Expectancy Diagram - CorePro LED PLS 5W 830 2P G23

CorePro LED PLS

Lifetime



Lumen Maintenance Diagram - CorePro LED PLS 5W 830 2P G23

