



T8

11.5T8/COR/36-850/MF14/G 10/1

Our TLEDs are available in InstantFit (Type A / Type C) or MainsFit (Ballast bypass / Type B) versions. The InstantFit lamps work on a broad variety of ballasts and LED drivers. Only InstantFit has over 15,000 lamp & ballast combinations delivering even light output, energy savings and a long lifetime. Our MainsFit products feature a double-ended design, simplifying installation while a proprietary safety circuit minimizes a shock risk. Lamp sizes range from 2-foot to 8-foot and U-bend with a variety of lumen outputs.

Product data

General Information	
Base	G13 [Medium Bi-Pin Fluorescent]
EU RoHS compliant	Yes
Nominal Lifetime (Nom)	50000 h
Switching Cycle	50000X
Light Technical	
Color Code	850 [CCT of 5000K]
Beam Angle (Nom)	180 °
Initial lumen (Nom)	1400 lm
Correlated Color Temperature (Nom)	5000 K
Color Consistency	<5
Color Rendering Index (Nom)	82
LLMF At End Of Nominal Lifetime (Nom)	70 %
Operating and Electrical	
Input Frequency	50 to 60 Hz
Power (Rated) (Nom)	11.5 W
Lamp Current (Max)	101 mA
Lamp Current (Min)	47 mA

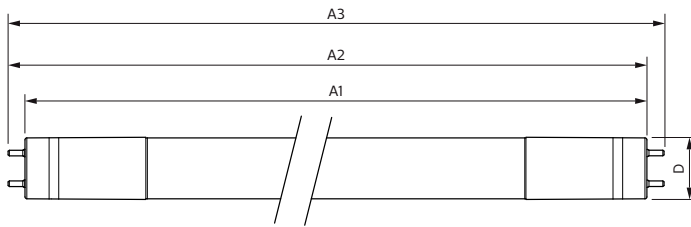
Starting Time (Nom)	0.9 s
Warm Up Time to 60% Light (Nom)	0.9 s
Power Factor (Nom)	0.9
Voltage (Nom)	120-277 V
Temperature	
T-Ambient (Max)	45 °C
T-Ambient (Min)	-20 °C
T-Storage (Max)	65 °C
T-Storage (Min)	-40 °C
T-Case Maximum (Nom)	50 °C
Controls and Dimming	
Dimmable	No
Mechanical and Housing	
Product Length	900 mm
Approval and Application	
Energy Saving Product	Yes

T8

Approbation Marks	UL certificate RoHS compliance DLC compliance
Energy Certifications	DLC Standard
Product Data	
Order product name	11.5T8/COR/36-850/MF14/G 10/1
EAN/UPC - Product	046677535520
Order code	535526

Numerator - Quantity Per Pack	1
Numerator - Packs per outer box	10
Material Nr. (12NC)	929001934504
Net Weight (Piece)	0.250 kg
Model Number	9290019345

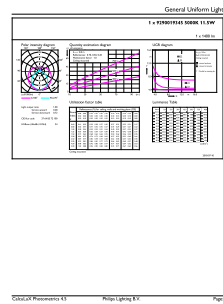
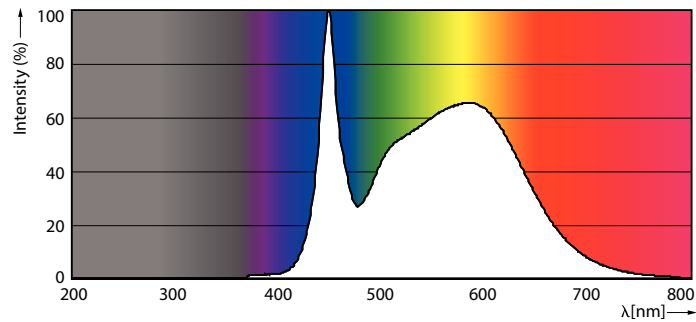
Dimensional drawing



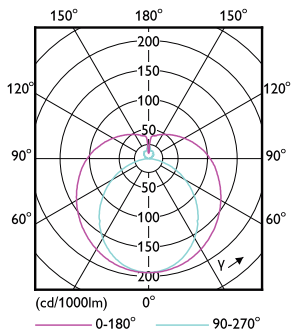
Product	D	A1	A2	A3
11.5T8/COR/36-850/MF14/G 10/1	25.9 mm	894.3 mm	900.5 mm	908.8 mm

TLED MF CorePro 3ft 1400lm 5000K

Photometric data



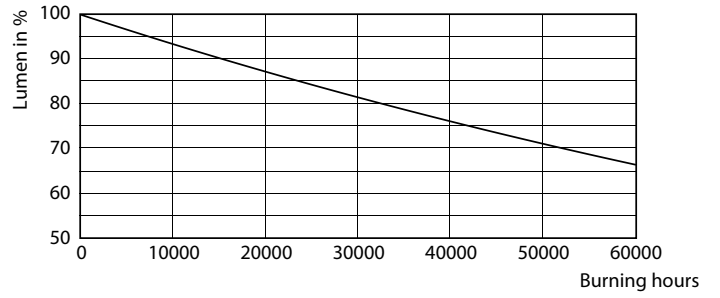
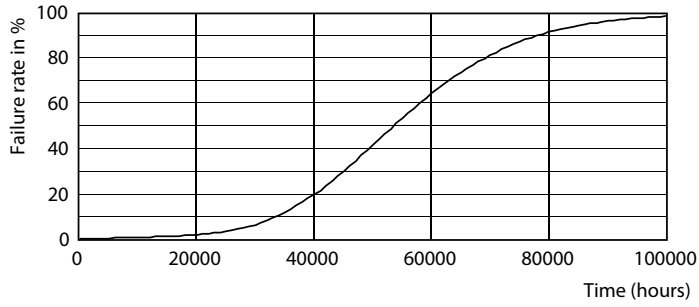
11-5W G13



11.5W G13 840

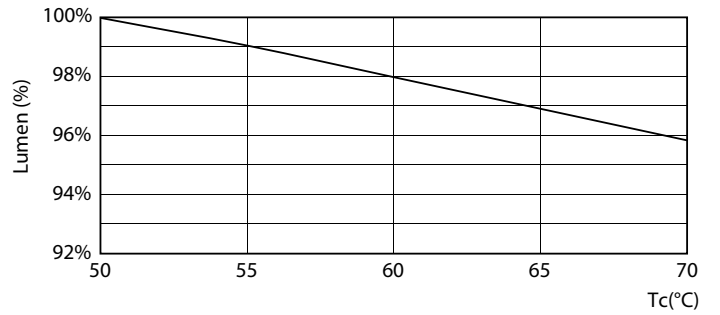
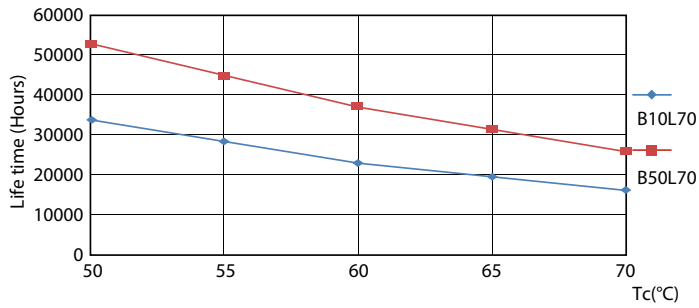
11-5W G13 850 5000K

Lifetime



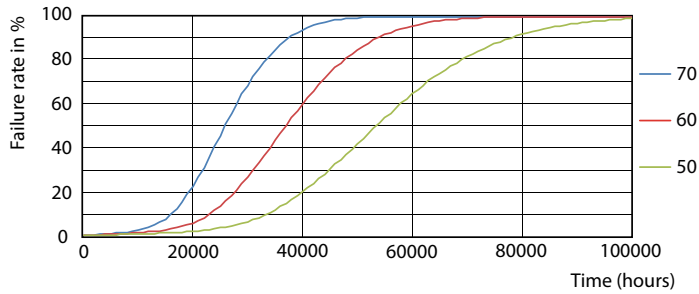
8.5W G13

8.5W G13



8.5W G13

11.5W



8.5W G13

