

# MASTER LEDtube EM/ Mains

## MASTER LEDtube 1050mm 16W 840 T8

The Philips MASTER LEDtube integrates a LED light source into a traditional fluorescent form factor. Its unique design creates a perfectly uniform visual appearance which cannot be distinguished from traditional fluorescent. This product is the ideal solution for up lighting in general lighting applications.

### Product data

General Information		Warm-up time to 60% light (nom.)	
Cap base	G13 [ Medium Bi-Pin Fluorescent]		0.5 s
Nominal lifetime (nom.)	50000 h	Power factor (nom.)	0.9
Switching cycle	200000X	Voltage (Nom)	220-240 V
Light Technical		Temperature	
Colour code	840 [ CCT of 4,000 K]	T ambient (max.)	45 °C
Beam Angle (Nom)	160 °	T ambient (min.)	-20 °C
Luminous flux (nom.)	2500 lm	T storage (max.)	65 °C
Correlated colour temperature (nom.)	4000 K	T storage (min.)	-40 °C
Colour consistency	<6	T-Case maximum (nom.)	55 °C
Color rendering index (nom.)	83	Controls and Dimming	
LLMF at end of nominal lifetime (nom.)	70 %	Dimmable	No
Operating and Electrical		Mechanical and Housing	
Input frequency	50 to 60 Hz	Product length	1100 mm
Power (Rated) (Nom)	16 W	Approval and Application	
Lamp current (max.)	83 mA	Energy efficiency label (EEL)	A++
Lamp current (min.)	61 mA	Energy-saving product	Yes
Starting time (nom.)	0.5 s		

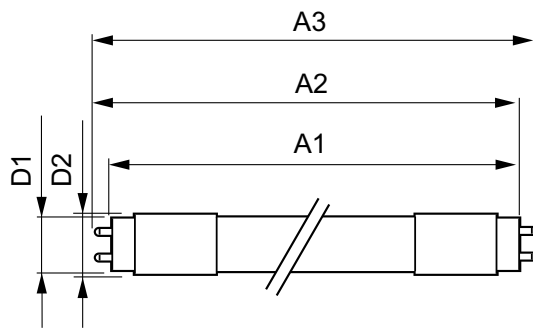
# MASTER LEDtube EM/Mains

Approval marks	RoHS compliance CE marking KEMA Keur certificate
Energy Consumption kWh/1000 h	16 kWh
<b>Product Data</b>	
Full product code	871869961602100
Order product name	MASTER LEDtube 1050mm 16W 840 T8
EAN/UPC – product	8718699616021

Order code	61602100
Numerator – quantity per pack	1
Numerator – packs per outer box	10
Material no. (12NC)	929001961102
Net weight (piece)	0.212 kg

## Warnings and Safety

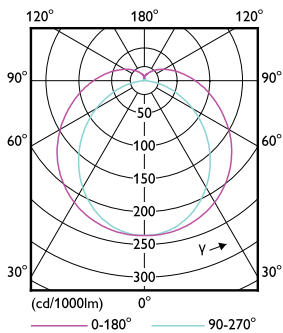
### Dimensional drawing



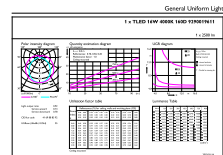
TLED 3.5ft 16-38W 2500lm 4000K G13

Product	D1	D2	A1	A2	A3
MASTER LEDtube 1050mm 16W 840 T8	25.8 mm	28 mm	1045.8 mm	1052.9 mm	1060 mm

### Photometric data



LEDtube 3,5ft G13

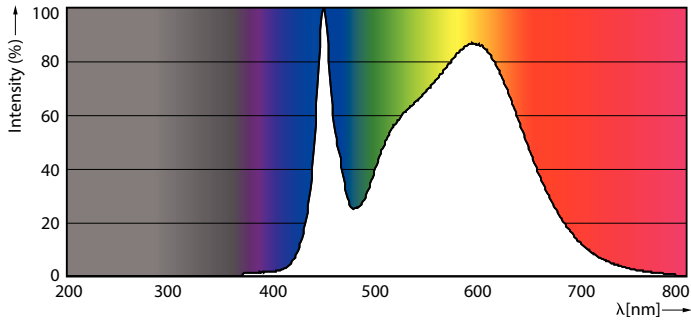


General Uniform Lighting

LEDtube 3,5ft G13

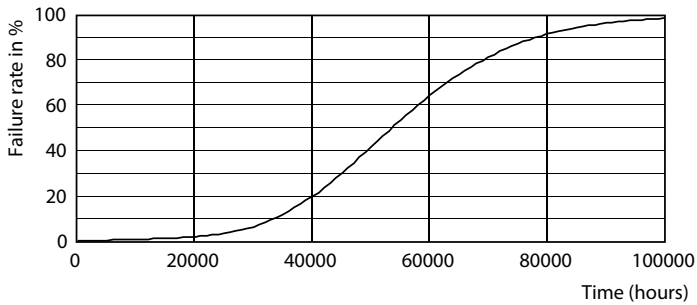
# MASTER LEDtube EM/Mains

## Photometric data

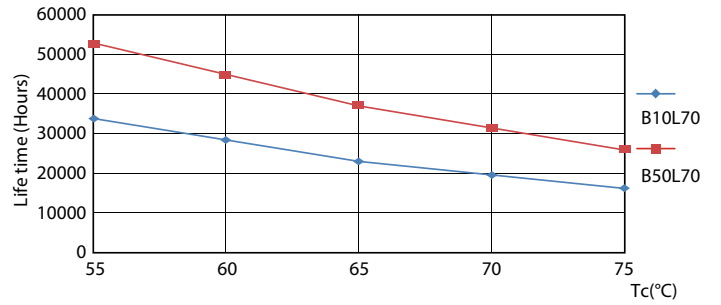


LEDtube 3,5ft G13

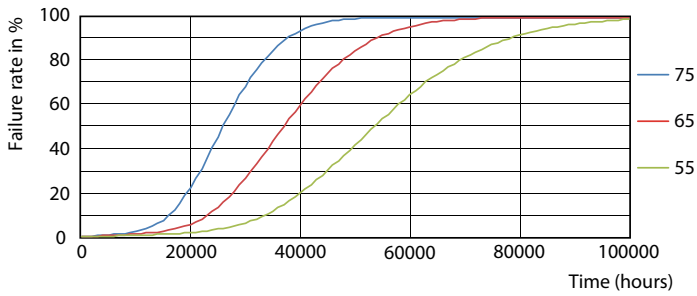
## Lifetime



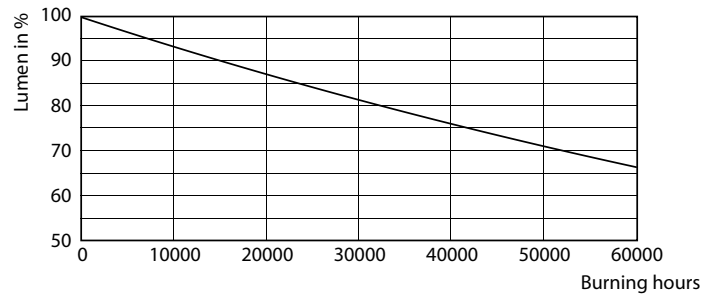
LEDtube MAS 16W G13 830 ND



LEDtube MAS 16W G13 830 ND



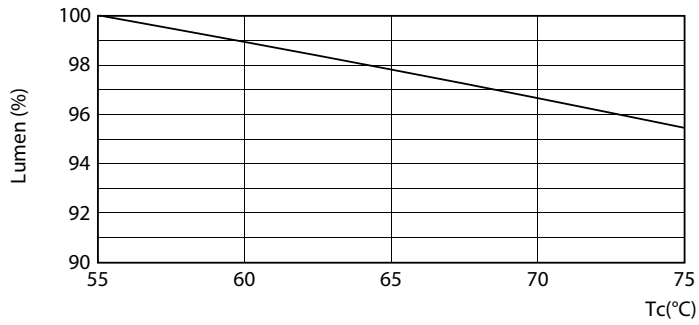
LEDtube MAS 16W G13 830 ND



LEDtube MAS 16W G13 830 ND

# MASTER LEDtube EM/Mains

## Lifetime



LEDtube MAS 16W G13 830 ND

