

# UniversalFit (UL Type-A) T8

16T8/LED/48-850/UF18/G 10/1

The Philips UniversalFit (UL Type-A) T8 lamps are designed to operate on both electronic T8 ballasts as well as magnetic T12 ballasts. The UniversalFit is a simple plug and play installation with no need to change the ballast. Compared to the less efficient T12 lamps, the UniversalFit lamps can save up to 50% in energy costs while providing longer life (36,000 hours). These lamps also meet the Philips standards for light quality so that end users will be in comfortable environments while benefiting from lower energy usage.

## Product data

General Information	
Cap-Base	G13 [Medium Bi-Pin Fluorescent]
Nominal lifetime	36,000 hour(s)
Switching Cycle	50,000
Lighting Technology	LED
EU RoHS compliant	Yes
Light Technical	
Color Code	850 [CCT of 5000K]
Beam Angle (Nom)	240 degree(s)
Luminous Flux	1,800 lm
Color Designation	Daylight
Correlated Color Temperature (Nom)	5000 K
Luminous Efficacy (rated) (Nom)	112.00 lm/W
Color Consistency	<5
Color rendering index (CRI)	80
LLMF At End Of Nominal Lifetime (Nom)	70 %

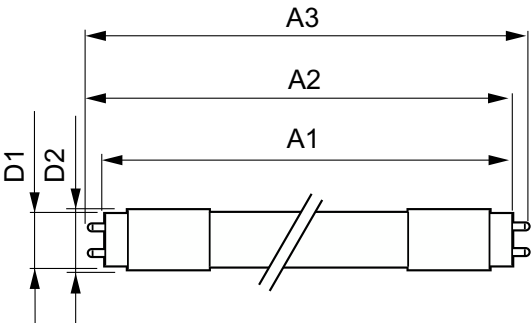
Operating and Electrical	
Line Frequency	50-120000 Hz
Input Frequency	50-120000 Hz
Power Consumption	16 W
Lamp Current (Max)	600 mA
Lamp Current (Min)	110 mA
Wattage Equivalent	32 W
Starting Time (Nom)	0.5 s
Warm-up time to 60% light	0.5 s
Power Factor (Fraction)	0.9
Voltage (Nom)	40-330 V
UL Type	UL Type A
Temperature	
Ambient temperature range	-20 °C to 45 °C
T-Case Maximum (Nom)	60 °C

UniversalFit (UL Type-A) T8

Controls and Dimming	
Dimmable	No
Mechanical and Housing	
Bulb Finish	Frosted
Bulb Material	Glass
Product Length	1,200 mm
Bulb Shape	T8
Approval and Application	
Energy Saving Product	Yes
Approval Marks	RoHS compliance UL certificate
Energy Consumption kWh/1000 h	- kWh

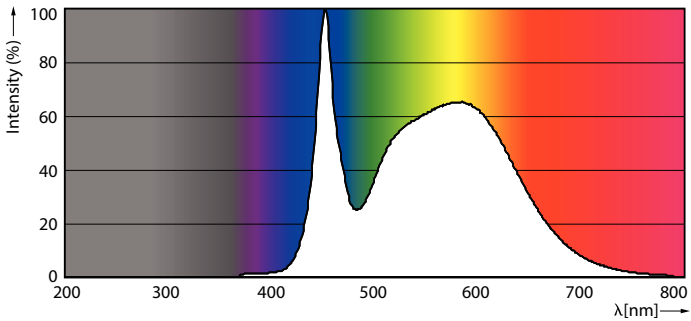
Application Conditions	
can it be used in closed luminaires	Yes
Product Data	
Order product name	16T8/LED/48-850/UF18/G 10/1
Full product name	16T8/LED/48-850/UF18/G 10/1
Order code	929001966004
Material Nr. (12NC)	929001966004
Numerator - Quantity Per Pack	1
EAN/UPC - Product/Case	046677539986
Numerator - Packs per outer box	10
EAN/UPC - Case	50046677539981

Dimensional drawing

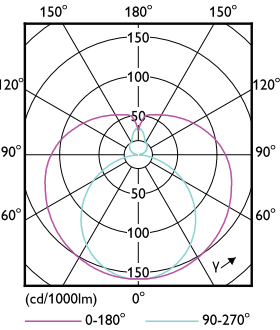


Product	D1	D2	A1	A2	A3
16T8/LED/48-850/UF18/G 10/1	25.7 mm	28 mm	1,198 mm	1,205 mm	1,212 mm

Photometric data



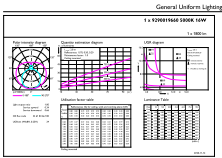
Spectral Power Distribution Colour - 16T8/LED/48-850/UF18/G 10/1



Light Distribution Diagram - 16T8/LED/48-850/UF18/G 10/1

UniversalFit (UL Type-A) T8

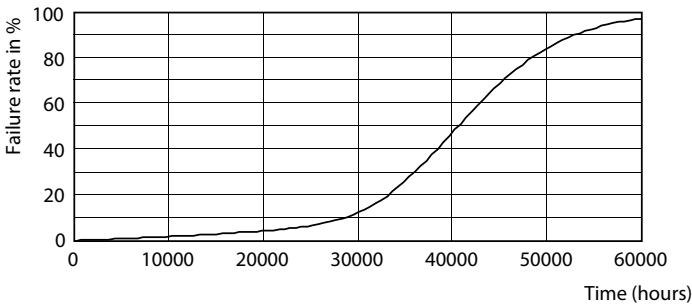
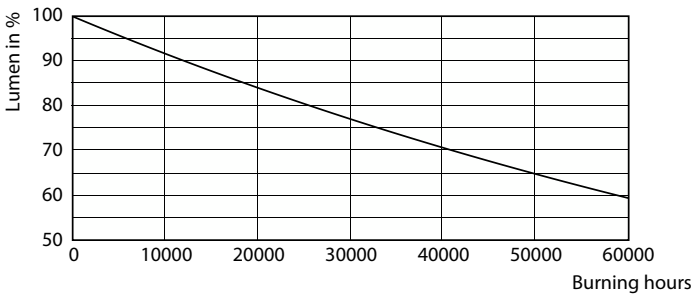
Photometric data



UniversalFit (UL Type-A) T8

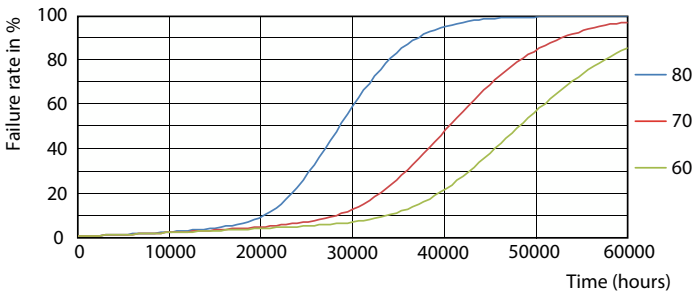
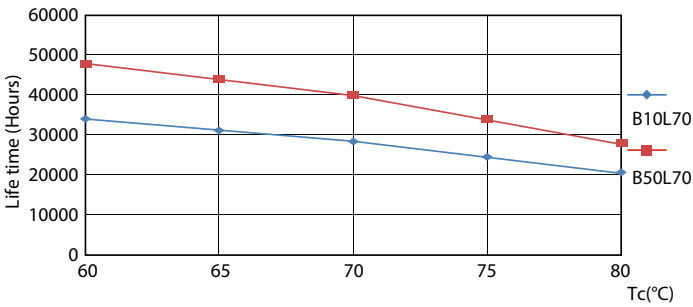
General uniform lighting - 16T8/LED/48-850/UF18/G 10/1

Lifetime



Lumen Maintenance Diagram - 16T8/LED/48-850/UF18/G 10/1

Life Expectancy Diagram - 16T8/LED/48-850/UF18/G 10/1

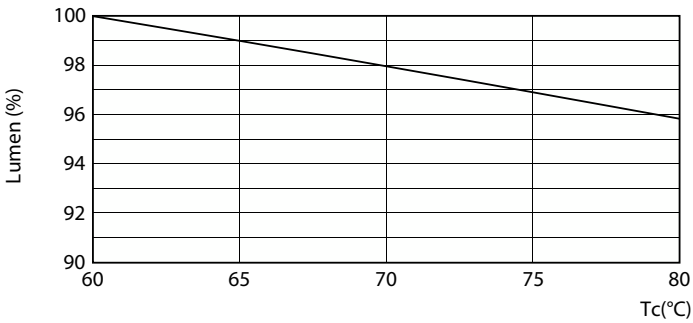


Life Expectancy Diagram - 16T8/LED/48-850/UF18/G 10/1

Life Expectancy Diagram - 16T8/LED/48-850/UF18/G 10/1

UniversalFit (UL Type-A) T8

Lifetime



Lumen Maintenance Diagram - 16T8/LED/48-850/UF18/G 10/1

