

T8

7T8/MAS/24-835/IF10/P 10/1

Our TLEDs are available in InstantFit (Type A / Type C) or MainsFit (Ballast bypass / Type B) versions. The InstantFit lamps work on a broad variety of ballasts and LED drivers. Only InstantFit has over 15,000 lamp & ballast combinations delivering even light output, energy savings and a long lifetime. Our MainsFit products feature a double-ended design, simplifying installation while a proprietary safety circuit minimizes a shock risk. Lamp sizes range from 2-foot to 8-foot and U-bend with a variety of lumen outputs.

Product data

General Information	
Base	G13 [Medium Bi-Pin Fluorescent]
Nominal Lifetime (Nom)	70000 h
Switching Cycle	50000X
B50L70	70000 h
Light Technical	
Color Code	835 [CCT of 3500K]
Beam Angle (Nom)	180 °
Initial lumen (Nom)	1100 lm
Luminous Flux (Rated) (Nom)	1100 lm
Rated Beam Angle	180 °
Correlated Color Temperature (Nom)	3500 K
Color Consistency	<6
Color Rendering Index (Nom)	80
LLMF At End Of Nominal Lifetime (Nom)	70 %
Operating and Electrical	
Input Frequency	20K to 120K Hz
Power (Rated) (Nom)	7 W

Lamp Current (Max)	240 mA
Lamp Current (Min)	80 mA
Starting Time (Nom)	0.5 s
Warm Up Time to 60% Light (Nom)	0.5 s
Power Factor (Nom)	0.9
Voltage (Nom)	120-277, 347 V
Temperature	
T-Ambient (Max)	45 °C
T-Ambient (Min)	-20 °C
T-Storage (Max)	65 °C
T-Storage (Min)	-40 °C
T-Case Maximum (Nom)	50 °C
Controls and Dimming	
Dimmable	No
Mechanical and Housing	
Product Length	600 mm

T8

Approval and Application

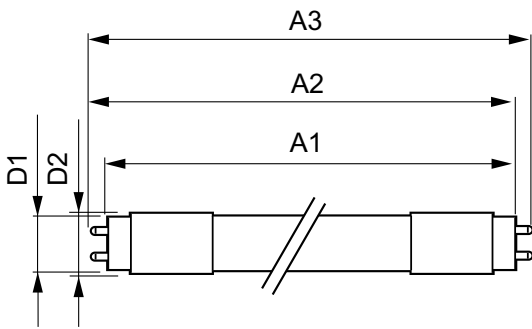
Energy Saving Product	Yes
Approbation Marks	RoHS compliance UL certificate DLC compliance
Energy Certifications	DLC Standard
DesignLights Consortium Qualified Product List	-

Product Data

Order product name	7T8/MAS/24-835/IF10/P 10/1
--------------------	----------------------------

EAN/UPC - Product	046677541828
Order code	541821
Numerator - Quantity Per Pack	1
Numerator - Packs per outer box	10
Material Nr. (12NC)	929001987004
Net Weight (Piece)	0.080 kg
Model Number	9290019870

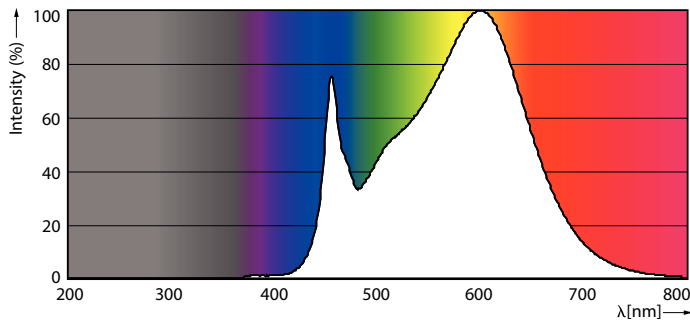
Dimensional drawing



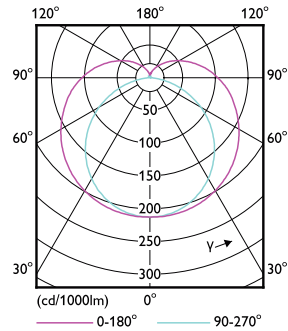
TLED IF MasterClass 2ft 1000lm 3500K

Product	D1	D2	A1	A2	A3
7T8/MAS/24-835/IF10/P 10/1	25.7 mm	26.3 mm	588.6 mm	595.7 mm	602.8 mm

Photometric data

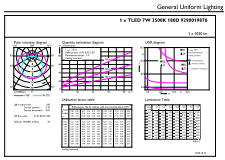


G13 3500K 1100lm



G13 4000K

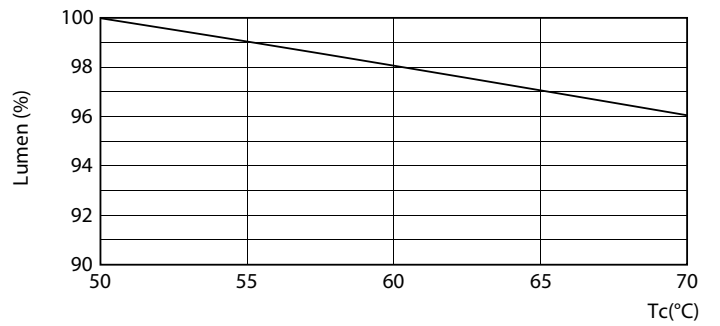
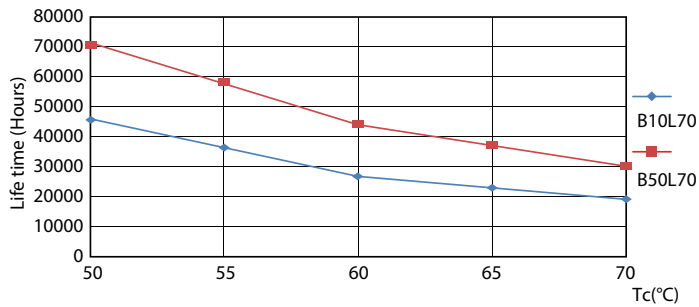
Photometric data



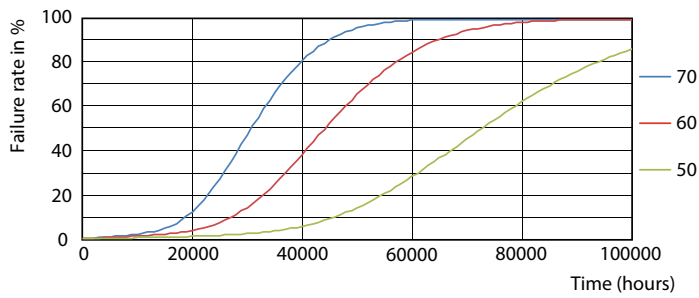
© Philips Lighting B.V. Page 11

G13 3500K 1100lm

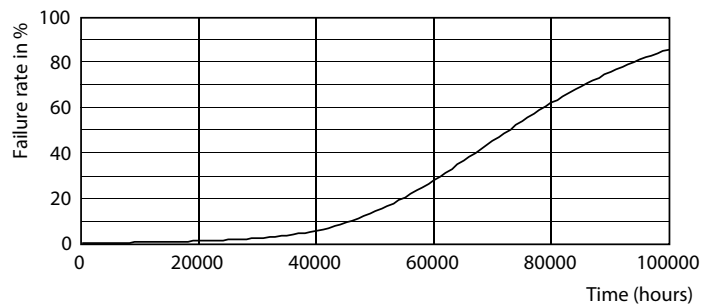
Lifetime



G13 4000K



G13 4000K

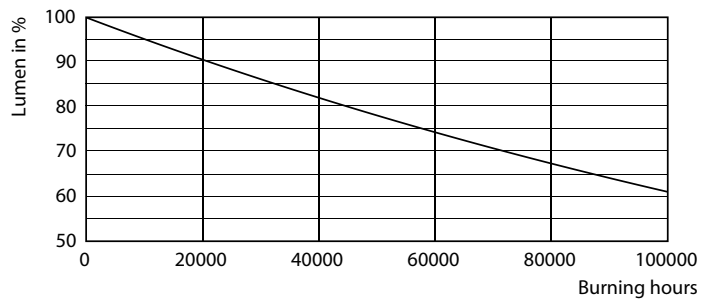


G13 4000K

G13 4000K

T8

Lifetime



G13 4000K

