



# T8

## 13T8-6U/MAS/24-835/IF20/P 10/1

Our TLEDs are available in InstantFit (Type A / Type C) or MainsFit (Ballast bypass / Type B) versions. The InstantFit lamps work on a broad variety of ballasts and LED drivers. Only InstantFit has over 15,000 lamp & ballast combinations delivering even light output, energy savings and a long lifetime. Our MainsFit products feature a double-ended design, simplifying installation while a proprietary safety circuit minimizes a shock risk. Lamp sizes range from 2-foot to 8-foot and U-bend with a variety of lumen outputs.

### Product data

General Information	
Base	G13 [ Medium Bi-Pin Fluorescent]
Nominal Lifetime (Nom)	70000 h
Switching Cycle	50000X
B50L70	70000 h
Light Technical	
Color Code	835 [ CCT of 3500K]
Beam Angle (Nom)	180 °
Initial lumen (Nom)	2000 lm
Luminous Flux (Rated) (Nom)	2000 lm
Rated Beam Angle	180 °
Correlated Color Temperature (Nom)	3500 K
Color Consistency	<6
Color Rendering Index (Nom)	80
LLMF At End Of Nominal Lifetime (Nom)	70 %
Operating and Electrical	
Input Frequency	20K to 120K Hz
Power (Rated) (Nom)	13 W

Starting Time (Nom)	0.5 s
Warm Up Time to 60% Light (Nom)	0.5 s
Power Factor (Nom)	0.9
Voltage (Nom)	120-277, 347 V
Temperature	
T-Ambient (Max)	45 °C
T-Ambient (Min)	-20 °C
T-Storage (Max)	65 °C
T-Storage (Min)	-40 °C
T-Case Maximum (Nom)	50 °C
Controls and Dimming	
Dimmable	No
Mechanical and Housing	
Product Length	600 mm
Approval and Application	
Energy Saving Product	Yes

# T8

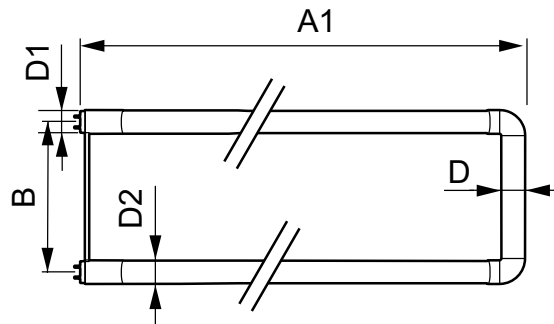
Approval Marks	RoHS compliance UL certificate DLC compliance
Energy Certifications	DLC Standard
DesignLights Consortium Qualified Product List	-

## Product Data

Order product name	13T8-6U/MAS/24-835/IF20/P 10/1
EAN/UPC - Product	046677541866

Order code	541862
Numerator - Quantity Per Pack	1
Numerator - Packs per outer box	10
Material Nr. (12NC)	929001987504
Net Weight (Piece)	0.270 kg
Model Number	9290019875

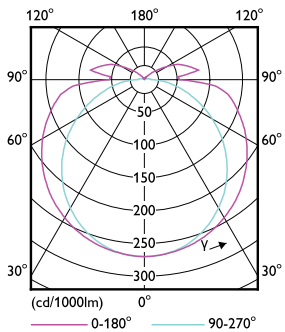
## Dimensional drawing



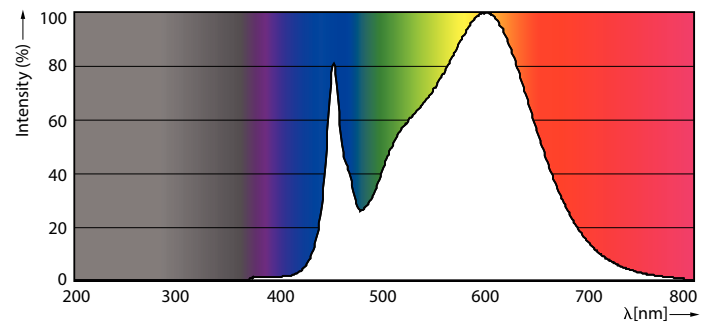
TLED IF MasterClass U bent 2000lm 3500K

Product	D1	D2	A1	A2	A3
13T8-6U/MAS/24-835/IF20/P 10/1	25.7 mm	28 mm	152 mm	570 mm	27.8 mm

## Photometric data

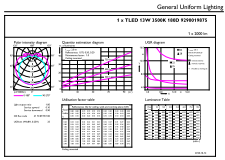


G13 3000K 2000lm



G13 3500K 2000lm

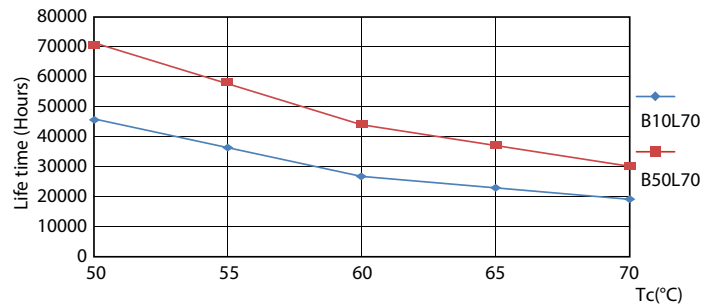
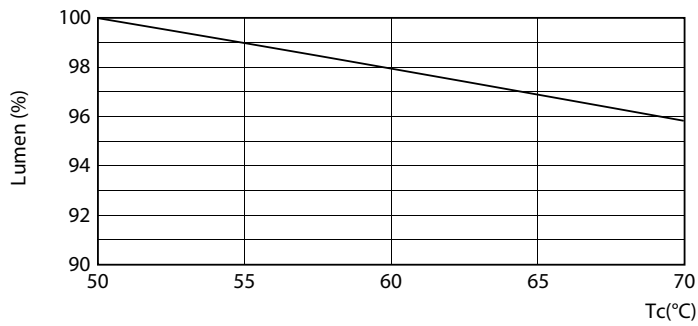
Photometric data



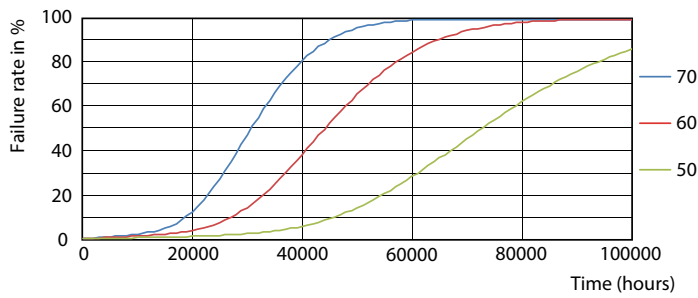
© 2019 Philips Lighting B.V. Page 11

G13 3500K 2000lm

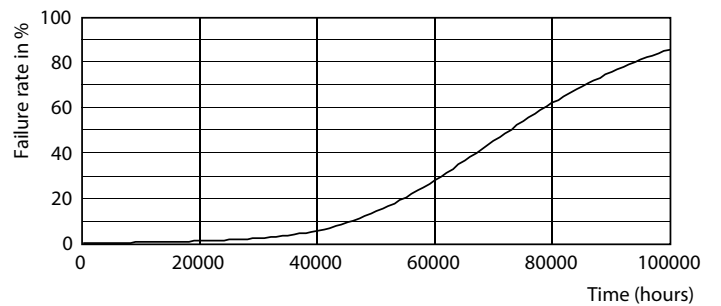
Lifetime



G13 3000K 2000lm



G13 4000K

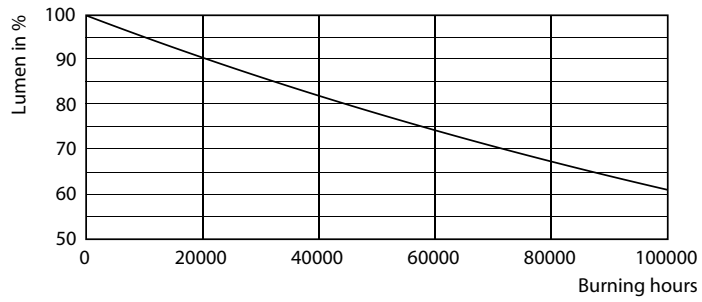


G13 4000K

G13 4000K

# T8

## Lifetime



G13 4000K

