



T8

13T8-6U/MAS/24-850/IF21/P 10/1

Our TLEDs are available in InstantFit (Type A / Type C) or MainsFit (Ballast bypass / Type B) versions. The InstantFit lamps work on a broad variety of ballasts and LED drivers. Only InstantFit has over 15,000 lamp & ballast combinations delivering even light output, energy savings and a long lifetime. Our MainsFit products feature a double-ended design, simplifying installation while a proprietary safety circuit minimizes a shock risk. Lamp sizes range from 2-foot to 8-foot and U-bend with a variety of lumen outputs.

Product data

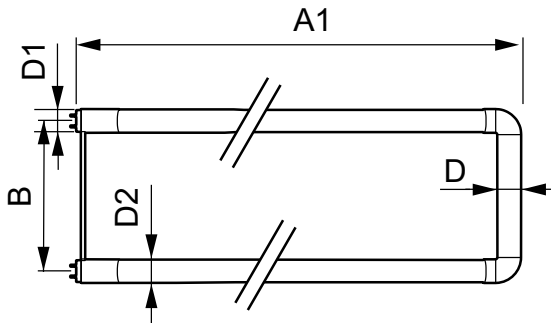
General Information		Power Factor (Nom)	
Base	G13 [Medium Bi-Pin Fluorescent]		0.9
EU RoHS compliant	Yes	Voltage (Nom)	120-277, 347 V
Nominal Lifetime (Nom)	70000 h	Temperature	
Switching Cycle	50000X	T-Ambient (Max)	45 °C
		T-Ambient (Min)	-20 °C
Light Technical		T-Storage (Max)	65 °C
Color Code	850 [CCT of 5000K]	T-Storage (Min)	-40 °C
Beam Angle (Nom)	180 °	T-Case Maximum (Nom)	50 °C
Initial lumen (Nom)	2100 lm	Controls and Dimming	
Correlated Color Temperature (Nom)	5000 K	Dimmable	No
Color Consistency	<5	Mechanical and Housing	
Color Rendering Index (Nom)	80	Product Length	600 mm
LLMF At End Of Nominal Lifetime (Nom)	70 %	Approval and Application	
Operating and Electrical		Energy Saving Product	Yes
Input Frequency	20K to 120K Hz	Approbation Marks	RoHS compliance UL certificate DLC compliance
Power (Rated) (Nom)	13 W		
Starting Time (Nom)	0.5 s		
Warm Up Time to 60% Light (Nom)	0.5 s		

T8

Energy Certifications	DLC Standard
Product Data	
Order product name	13T8-6U/MAS/24-850/IF21/P 10/1
EAN/UPC - Product	046677541880
Order code	541888
Numerator - Quantity Per Pack	1

Numerator - Packs per outer box	10
Material Nr. (12NC)	929001987704
Net Weight (Piece)	0.270 kg
Model Number	9290019877

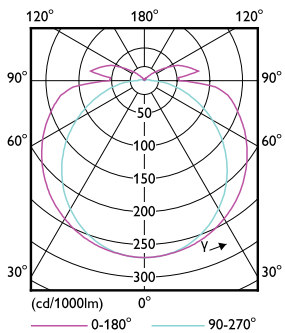
Dimensional drawing



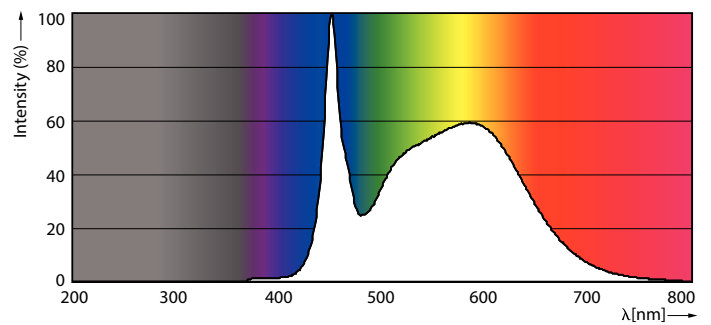
TLED IF MasterClass U bent 2100lm 5000K

Product	D1	D2	A1	A2	A3
13T8-6U/MAS/24-850/IF21/P 10/1	25.7 mm	28 mm	152 mm	570 mm	27.8 mm

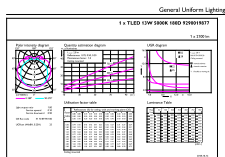
Photometric data



G13 3000K 2000lm

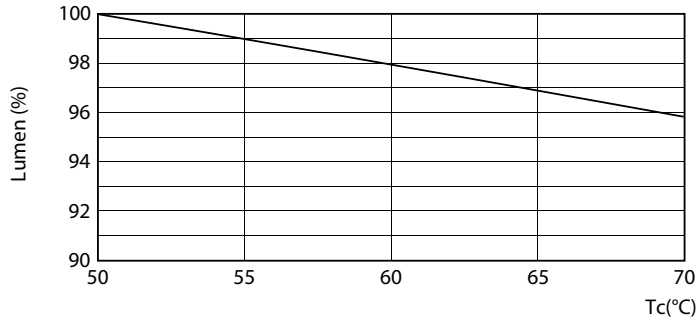


G13 5000K 2100lm

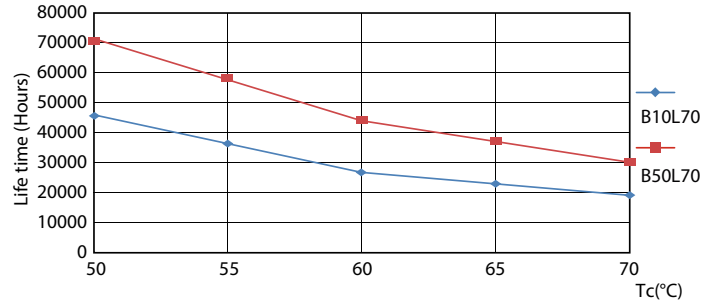


G13 5000K 2100lm

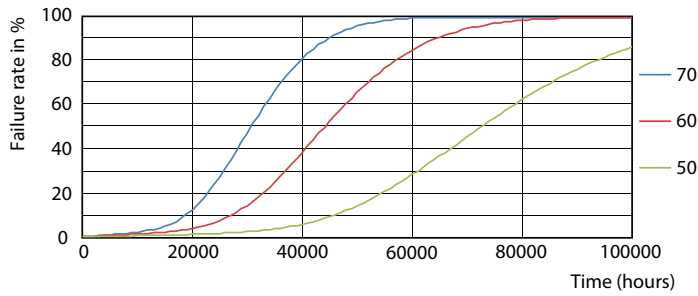
Lifetime



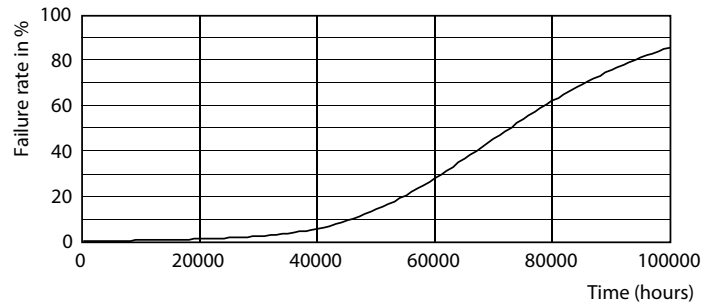
G13 3000K 2000lm



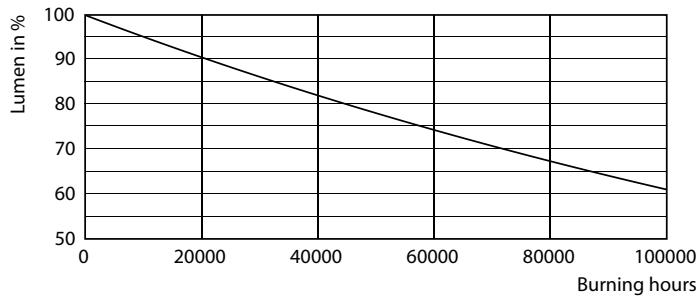
G13 4000K



G13 4000K



G13 4000K



G13 4000K

