

T8

10T8/COR/48-850/IF16/G 25/1

Our TLEDs are available in InstantFit (Type A / Type C) or MainsFit (Ballast bypass / Type B) versions. The InstantFit lamps work on a broad variety of ballasts and LED drivers. Only InstantFit has over 15,000 lamp & ballast combinations delivering even light output, energy savings and a long lifetime. Our MainsFit products feature a double-ended design, simplifying installation while a proprietary safety circuit minimizes a shock risk. Lamp sizes range from 2-foot to 8-foot and U-bend with a variety of lumen outputs.

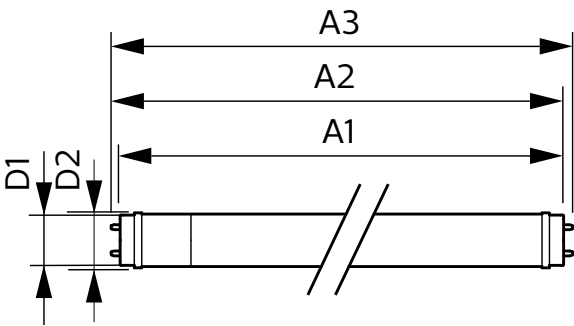
Product data

General Information		Input Frequency	
Cap-Base	G13 [Medium Bi-Pin Fluorescent]	Power Consumption	10 W
Nominal lifetime	50,000 hour(s)	Lamp Current (Max)	260 mA
Switching Cycle	50,000	Lamp Current (Min)	100 mA
Lighting Technology	LED	Starting Time (Nom)	0.5 s
EU RoHS compliant	Yes	Warm-up time to 60% light	0.5 s
Light Technical		Power Factor (Fraction)	0.9
Color Code	850 [CCT of 5000K]	Voltage (Nom)	120-277, 347 V
Beam Angle (Nom)	240 degree(s)	UL Type	Type A - works on ballast Type C - works with dedicated LED driver Type A+C - works with both ballasts and the LED driver
Luminous Flux	1,600 lm	Temperature	
Color Designation	Daylight	Ambient temperature range	-20 °C to 45 °C
Correlated Color Temperature (Nom)	5000 K	T-Case Maximum (Nom)	50 °C
Luminous Efficacy (rated) (Nom)	160.00 lm/W	Controls and Dimming	
Color Consistency	<5	Dimmable	No
Color rendering index (CRI)	82		
LLMF At End Of Nominal Lifetime (Nom)	70 %		
Operating and Electrical			
Line Frequency	25000-105000 Hz		

Mechanical and Housing	
Product Length	1,200 mm
Bulb Shape	Tube, double-ended
Approval and Application	
Energy Saving Product	Yes
Approval Marks	UL certificate RoHS compliance DLC compliance
Energy Consumption kWh/1000 h	- kWh
Energy Certifications	DLC Standard

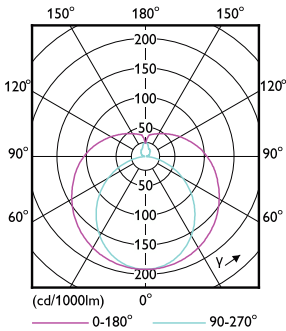
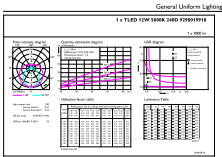
Product Data	
Order product name	10T8/COR/48-850/IF16/G 25/1
Full product name	10T8/COR/48-850/IF16/G 25/1
Order code	929001991804
Material Nr. (12NC)	929001991804
Numerator - Quantity Per Pack	1
EAN/UPC - Product/Case	046677541996
Numerator - Packs per outer box	25
EAN/UPC - Case	50046677541991

Dimensional drawing



Product	D1	D2	A1	A2	A3
10T8/COR/48-850/IF16/G 25/1	25.7 mm	28 mm	1,198.1 mm	1,205.2 mm	1,212.3 mm

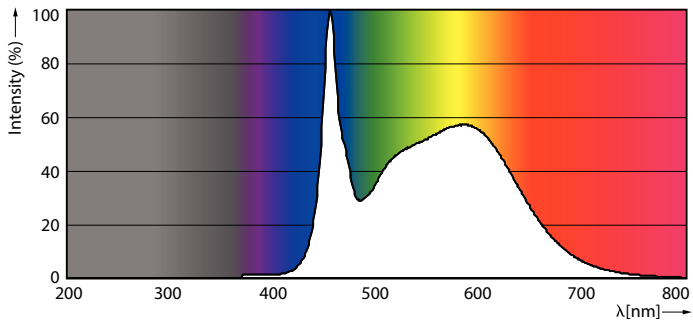
Photometric data



General uniform lighting - 10T8/COR/48-850/IF16/G 25/1

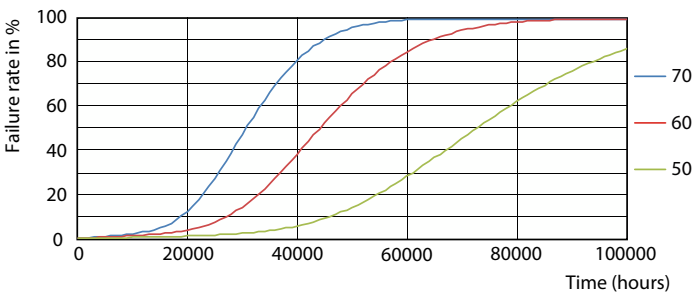
Light Distribution Diagram - 10T8/COR/48-850/IF16/G 25/1

Photometric data

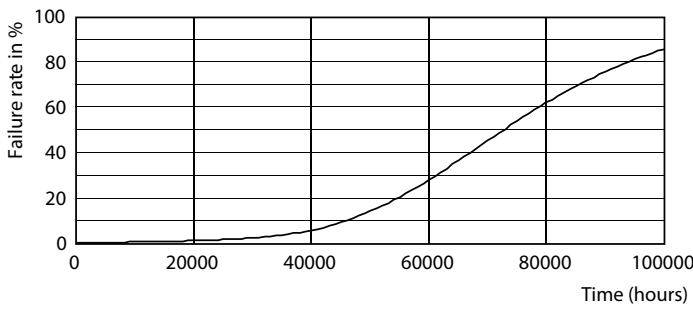


Spectral Power Distribution Colour - 10T8/COR/48-850/IF16/G 25/1

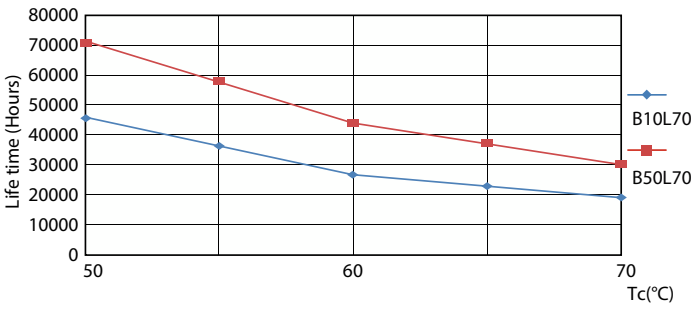
Lifetime



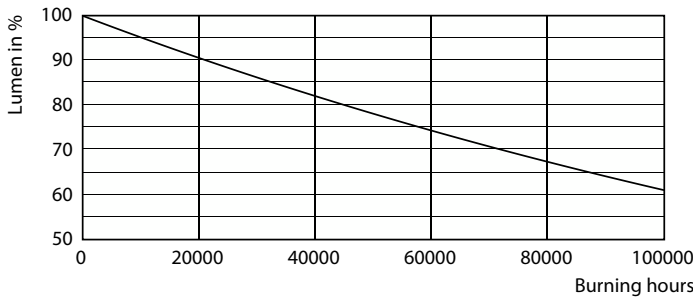
Life Expectancy Diagram - 10T8/COR/48-850/IF16/G 25/1



Life Expectancy Diagram - 10T8/COR/48-850/IF16/G 25/1

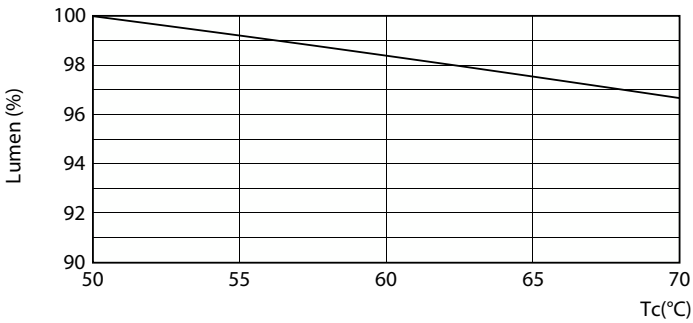


Life Expectancy Diagram - 10T8/COR/48-850/IF16/G 25/1



Lumen Maintenance Diagram - 10T8/COR/48-850/IF16/G 25/1

Lifetime



Lumen Maintenance Diagram - 10T8/COR/48-850/IF16/G 25/1

