



T5

25T5HO/COR/46-840/MF35/G 25/1

Philips T5 LED tubes offer an affordable, energy saving retrofit solution. The T5 lamps have been engineered to withstand the test of time with a 50,000-hour lifetime and a limited 5-year warranty to back it up. The lighting performance effectively replaces conventional fluorescent T5 HO or T5 HE lamps. Available in either InstantFit (Type A or Type C) or MainsFit (Type B / Ballast bypass), Philips T5 TLEDs provide a variety of options for any application.

Product data

General Information	
Cap-Base	G5 [G5]
EU RoHS compliant	Yes
Nominal Lifetime (Nom)	50000 h
Switching Cycle	50000X
Light Technical	
Color Code	840 [CCT of 4000K]
Beam Angle (Nom)	200 °
Luminous Flux (Nom)	3500 lm
Color Designation	Cool White (CW)
Correlated Color Temperature (Nom)	4000 K
Luminous Efficacy (rated) (Nom)	140.00 lm/W
Color Consistency	<6
Color Rendering Index (Nom)	80
LLMF At End Of Nominal Lifetime (Nom)	70 %
Operating and Electrical	
Input Frequency	50 to 60 Hz
Power (Nom)	25 W
Lamp Current (Max)	210 mA

Lamp Current (Min)	95 mA
Starting Time (Nom)	0.45 s
Warm Up Time to 60% Light (Nom)	0.5 s
UL Type	Type B - bypass the ballast
Power Factor (Nom)	0.9
Voltage (Nom)	120-277 V

Temperature	
T-Ambient (Max)	45 °C
T-Ambient (Min)	-20 °C
T-Storage (Max)	65 °C
T-Storage (Min)	-40 °C
T-Case Maximum (Nom)	75 °C

Controls and Dimming	
Dimmable	No

Mechanical and Housing	
Product Length	1200 mm

T5

Approval and Application

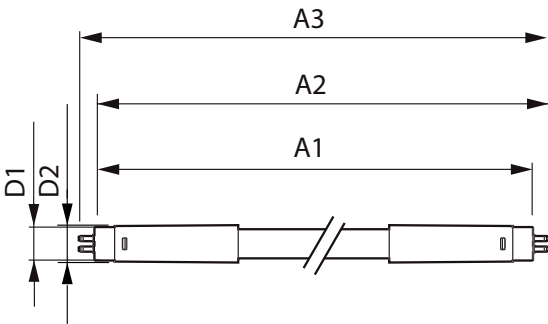
Energy Efficiency Label (EEL)	Not applicable
Energy Saving Product	Yes
Approval Marks	RoHS compliance UL certificate DLC compliance
Energy Consumption kWh/1000 h	- kWh

Product Data

Order product name	25T5HO/COR/46-840/MF35/G 25/1
--------------------	-------------------------------

EAN/UPC - Product	046677542061
Order code	929001992604
Numerator - Quantity Per Pack	1
Numerator - Packs per outer box	25
Material Nr. (12NC)	929001992604
Net Weight (Piece)	0.215 kg

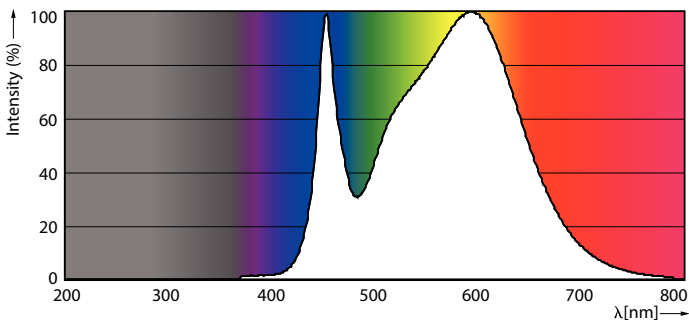
Dimensional drawing



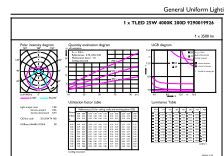
TLED 120-277V25W-54W 3500lm 4000K G5 ND

Product	D1	D2	A1	A2	A3
25T5HO/COR/46-840/MF35/G 25/1	15.3 mm	18.6 mm	1147.8 mm	1154.9 mm	1162 mm

Photometric data



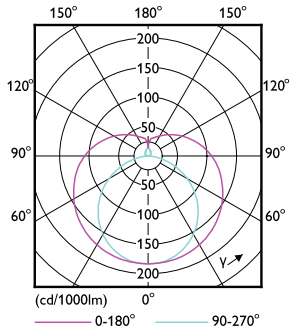
LEDtube G5 4000K



OSRAM Photometric 11 - Strip Lighting 11 - Page 11

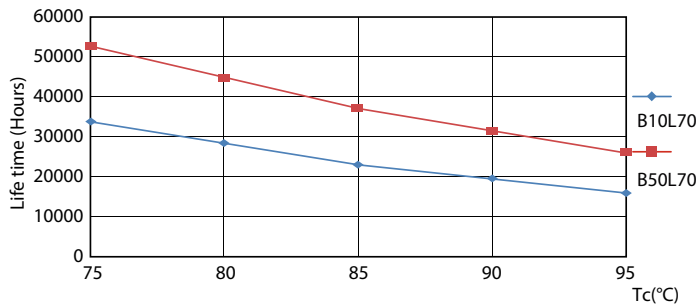
LEDtube G5 4000K

Photometric data

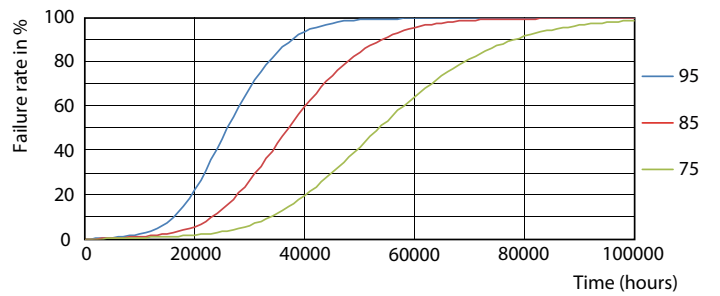


LEDtube G5 25W

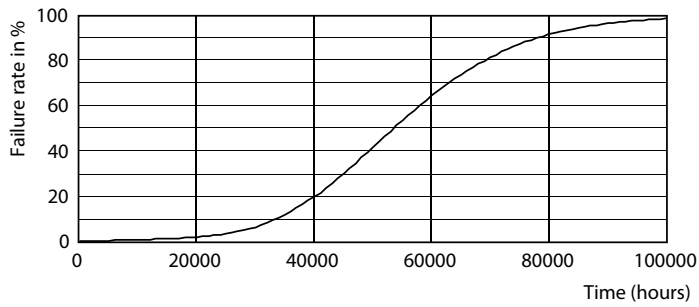
Lifetime



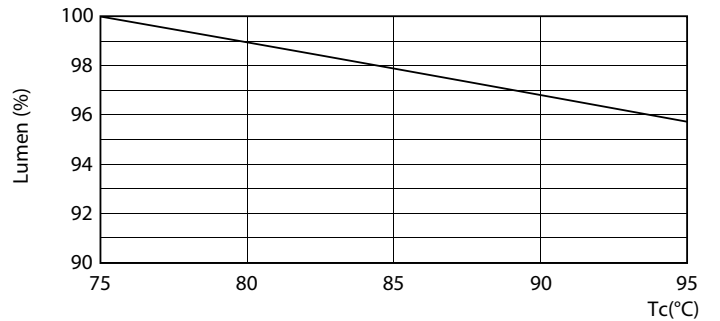
LEDtube G5 25W LifetimeVsTc



LEDtube G5 25W FailureRate



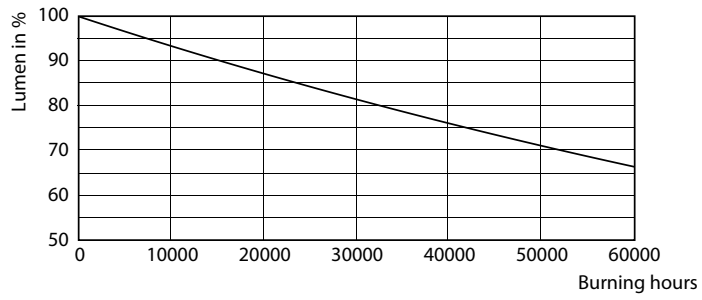
LEDtube G5 25W



LEDtube G5 25W LumenVsTc

T5

Lifetime



LEDtube G5 25W

