



# CorePro LEDtube EM/ Mains T8

## CorePro LEDtube 1200mm 18W 830 T8C W G

Philips CorePro LEDtubes are the quick and easy way to replace T8 fluorescent or other LED tubes with a fast pay back time. Not only does the Core range of LEDtubes require a low initial investment, but LED energy efficiency also delivers instant savings that you can bank on over a long and reliable lifetime. Plus, with the same lamp size and light distribution as fluorescent alternatives, you'll never know the difference. There are two ways to install these LED tubes: Rewire your existing fluorescent-based luminaires so the CorePro LEDtubes work directly on the Mains. Or simply change the fluorescent starter to an LED starter that can be used with your Electromagnetic ballasts.

### Warnings and Safety

- NOTE: The overall energy efficiency and light distribution of any installation that uses these lamps will be determined by the design of the installation.
- Installation must be done according to the installation diagrams provided with the lamp or available online. Installation must be done by a certified professional.

### Product data

General Information	
Cap-Base	G13 [Medium Bi-Pin Fluorescent]
Nominal lifetime	25,000 hour(s)
Switching Cycle	50,000
Lighting Technology	LED
EU RoHS compliant	Yes
Light Technical	
Color Code	830 [CCT of 3000K]
Beam Angle (Nom)	240 degree(s)

Luminous Flux	1,850 lm
Color Designation	White (WH)
Correlated Color Temperature (Nom)	3000 K
Luminous Efficacy (rated) (Nom)	102.00 lm/W
Color Consistency	<6
Color rendering index (CRI)	80
LLMF At End Of Nominal Lifetime (Nom)	70 %
Operating and Electrical	
Line Frequency	50 to 60 Hz

CorePro LEDtube EM/Mains T8

Input Frequency	50 to 60 Hz
Power Consumption	18 W
Lamp Current (Max)	160 mA
Lamp Current (Min)	95 mA
Starting Time (Nom)	0.5 s
Warm-up time to 60% light	0.5 s
Power Factor (Fraction)	0.92
Voltage (Nom)	100-240 V

Temperature

Ambient temperature range	-20 °C to 45 °C
T-Case Maximum (Nom)	65 °C

Controls and Dimming

Dimmable	No
----------	----

Mechanical and Housing

Product Length	1,200 mm
Bulb Shape	T8

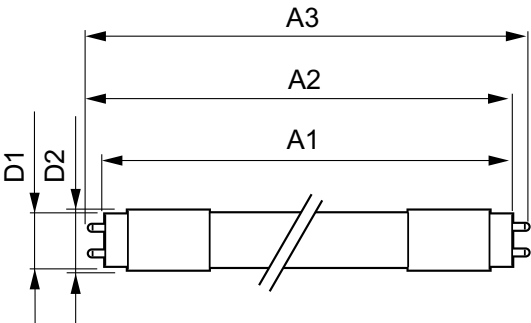
Approval and Application

Energy Saving Product	Yes
Approval Marks	RoHS compliance
Energy Consumption kWh/1000 h	18 kWh

Product Data

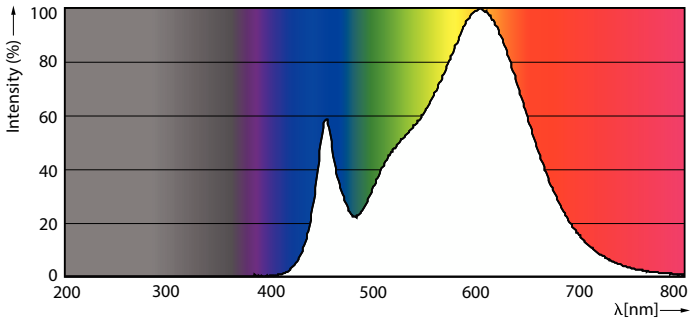
Order product name	CorePro LEDtube 1200mm 18W 830 T8C W G
Full product name	CorePro LEDtube 1200mm 18W 830 T8C W G
Full product code	871869963755200
Order code	929001999772
Material Nr. (12NC)	929001999772
Numerator - Quantity Per Pack	1
EAN/UPC - Product/Case	8718699637552
Numerator - Packs per outer box	25
EAN/UPC - Case	8718699637569

Dimensional drawing

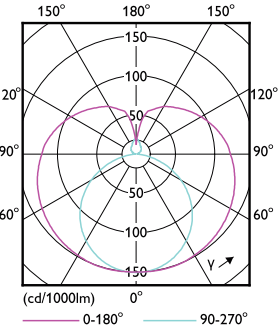


Product	D1	D2	A1	A2	A3
CorePro LEDtube 1200mm 18W 830 T8C W G	25.6 mm	27.8 mm	1,199.4 mm	1,205.3 mm	1,213.6 mm

Photometric data



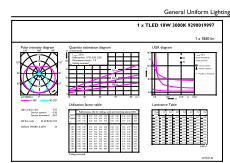
Spectral Power Distribution Colour - CorePro LEDtube 1200mm 18W 830 T8C W G



Light Distribution Diagram - CorePro LEDtube 1200mm 18W 830 T8C W G

CorePro LEDtube EM/Mains T8

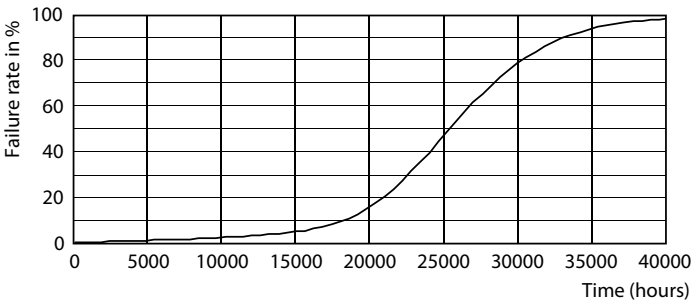
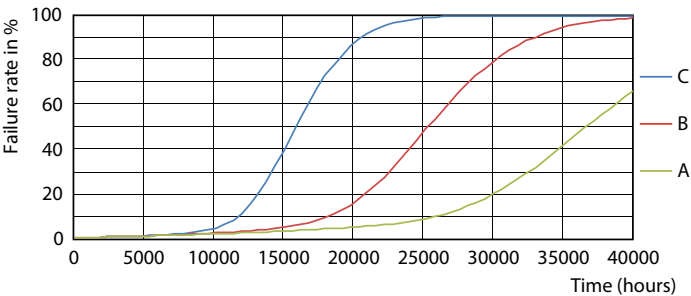
Photometric data



General uniform lighting - CorePro LEDtube 1200mm 18W 830 T8C W G

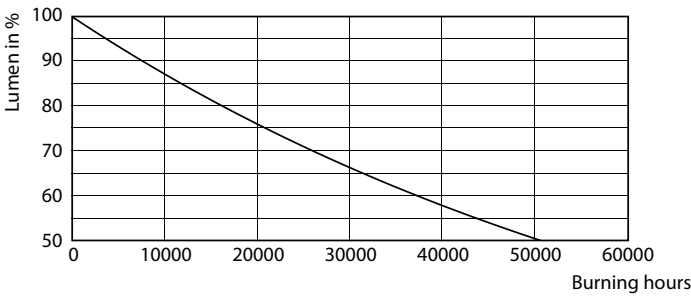
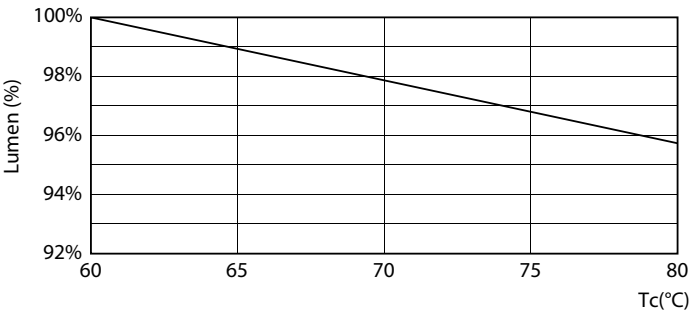
General uniform lighting - CorePro LEDtube 1200mm 18W 830 T8C W G

Lifetime



Life Expectancy Diagram - CorePro LEDtube 1200mm 18W 830 T8C W G

Life Expectancy Diagram - CorePro LEDtube 1200mm 18W 830 T8C W G

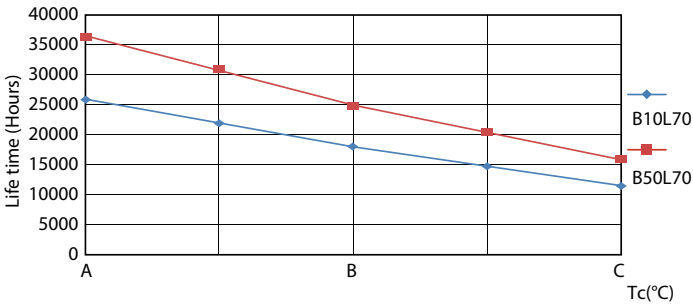


Lumen Maintenance Diagram - CorePro LEDtube 1200mm 18W 830 T8C W G

Lumen Maintenance Diagram - CorePro LEDtube 1200mm 18W 830 T8C W G

CorePro LEDtube EM/Mains T8

Lifetime



Life Expectancy Diagram - CorePro LEDtube 1200mm 18W 830 T8C W G

