



CorePro LEDtube EM/ Mains T8

CorePro LEDtube 600mm 9W 830 T8C W G

Philips CorePro LEDtubes are the quick and easy way to replace T8 fluorescent or other LED tubes with a fast pay back time. Not only does the Core range of LEDtubes require a low initial investment, but LED energy efficiency also delivers instant savings that you can bank on over a long and reliable lifetime. Plus, with the same lamp size and light distribution as fluorescent alternatives, you'll never know the difference. There are two ways to install these LED tubes: Rewire your existing fluorescent-based luminaires so the CorePro LEDtubes work directly on the Mains. Or simply change the fluorescent starter to an LED starter that can be used with your Electromagnetic ballasts.

Warnings and Safety

- NOTE: The overall energy efficiency and light distribution of any installation that uses these lamps will be determined by the design of the installation.
- Installation must be done according to the installation diagrams provided with the lamp or available online. Installation must be done by a certified professional.

Product data

General Information	
Cap-Base	G13 [Medium Bi-Pin Fluorescent]
Nominal lifetime	25,000 hour(s)
Switching Cycle	50,000
Lighting Technology	LED
EU RoHS compliant	Yes
Light Technical	
Color Code	830 [CCT of 3000K]
Beam Angle (Nom)	240 degree(s)

Luminous Flux	900 lm
Color Designation	White (WH)
Correlated Color Temperature (Nom)	3000 K
Luminous Efficacy (rated) (Nom)	100.00 lm/W
Color Consistency	<6
Color rendering index (CRI)	80
LLMF At End Of Nominal Lifetime (Nom)	70 %
Operating and Electrical	
Line Frequency	50 to 60 Hz

CorePro LEDtube EM/Mains T8

Input Frequency	50 to 60 Hz
Power Consumption	9 W
Lamp Current (Max)	80 mA
Lamp Current (Min)	50 mA
Starting Time (Nom)	0.5 s
Warm-up time to 60% light	0.5 s
Power Factor (Fraction)	0.92
Voltage (Nom)	100–240 V

Temperature

Ambient temperature range	–20 °C to 45 °C
T-Case Maximum (Nom)	65 °C

Controls and Dimming

Dimmable	No
----------	----

Mechanical and Housing

Product Length	600 mm
Bulb Shape	T8

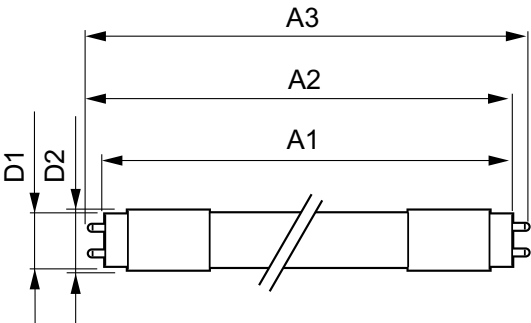
Approval and Application

Energy Saving Product	Yes
Approval Marks	RoHS compliance
Energy Consumption kWh/1000 h	9 kWh

Product Data

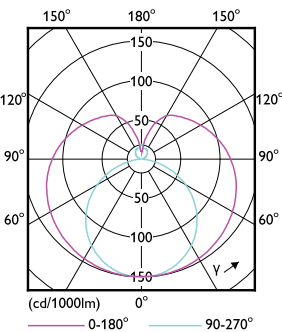
Order product name	CorePro LEDtube 600mm 9W 830 T8C W G
Full product name	CorePro LEDtube 600mm 9W 830 T8C W G
Full product code	871869963749100
Order code	929002000372
Material Nr. (12NC)	929002000372
Numerator - Quantity Per Pack	1
EAN/UPC - Product/Case	8718699637491
Numerator - Packs per outer box	25
EAN/UPC - Case	8718699637507

Dimensional drawing

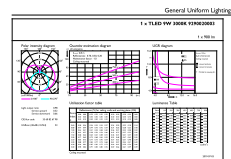


Product	D1	D2	A1	A2	A3
CorePro LEDtube 600mm 9W 830 T8C W G	25.6 mm	27.8 mm	589.8 mm	595.7 mm	604 mm

Photometric data



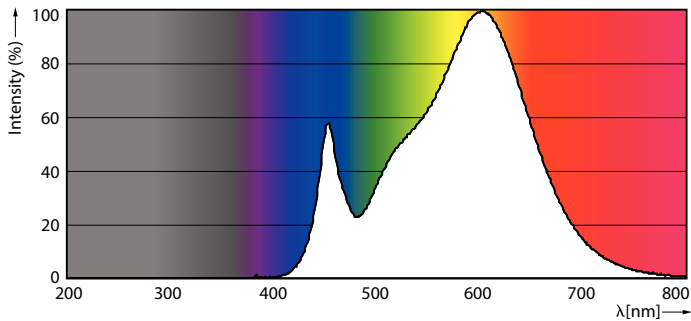
Light Distribution Diagram - CorePro LEDtube 600mm 9W 830 T8C W G



General uniform lighting - CorePro LEDtube 600mm 9W 830 T8C W G

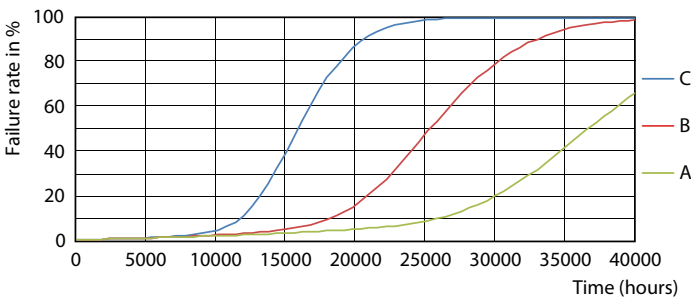
CorePro LEDtube EM/Mains T8

Photometric data

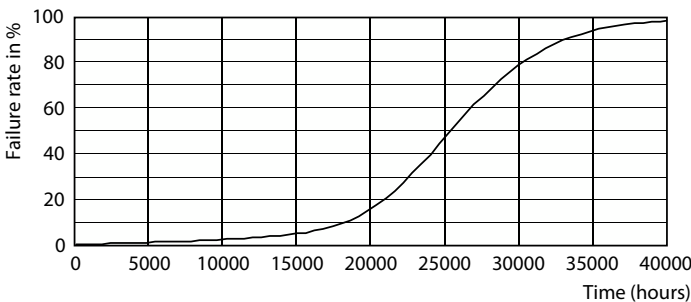


Spectral Power Distribution Colour - CorePro LEDtube 600mm 9W 830 T8C W G

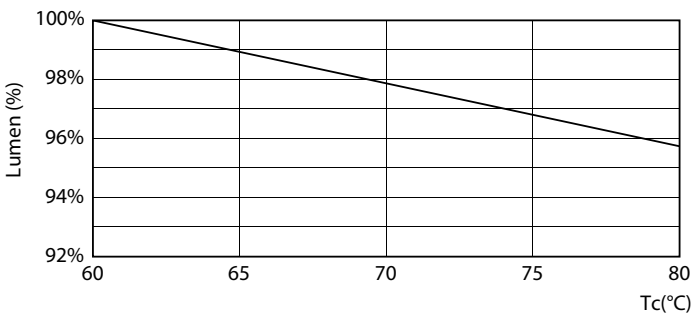
Lifetime



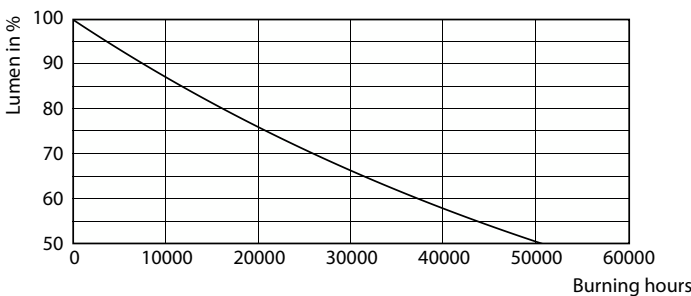
Life Expectancy Diagram - CorePro LEDtube 600mm 9W 830 T8C W G



Life Expectancy Diagram - CorePro LEDtube 600mm 9W 830 T8C W G



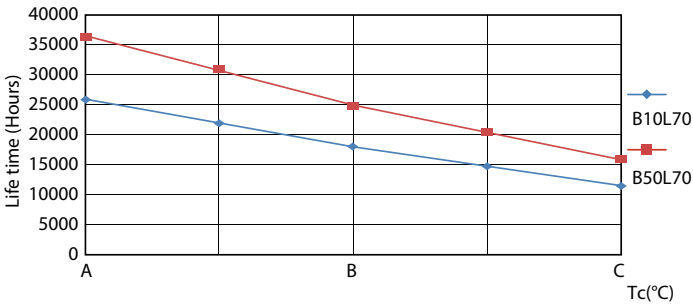
Lumen Maintenance Diagram - CorePro LEDtube 600mm 9W 830 T8C W G



Lumen Maintenance Diagram - CorePro LEDtube 600mm 9W 830 T8C W G

CorePro LEDtube EM/Mains T8

Lifetime



Life Expectancy Diagram - CorePro LEDtube 600mm 9W 830 T8C W G

