



T8

9.5T8/MAS/48-840/IF16/P/DIM 10/1

Our TLEDs are available in InstantFit (Type A / Type C) or MainsFit (Ballast bypass / Type B) versions. The InstantFit lamps work on a broad variety of ballasts and LED drivers. Only InstantFit has over 15,000 lamp & ballast combinations delivering even light output, energy savings and a long lifetime. Our MainsFit products feature a double-ended design, simplifying installation while a proprietary safety circuit minimizes a shock risk. Lamp sizes range from 2-foot to 8-foot and U-bend with a variety of lumen outputs.

Product data

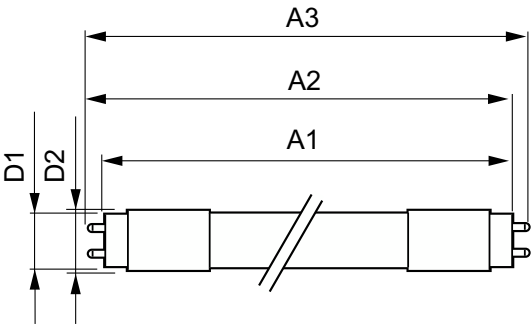
General Information		Input Frequency	
Cap-Base	G13 [Medium Bi-Pin Fluorescent]	Power Consumption	9.5 W
Nominal lifetime	70,000 hour(s)	Starting Time (Nom)	0.5 s
Switching Cycle	50,000	Warm-up time to 60% light	0.5 s
Lighting Technology	LED	Power Factor (Fraction)	0.9
EU RoHS compliant	Yes	Voltage (Nom)	120-277, 347 V
Light Technical		UL Type	Type A - works on ballast
Color Code	840 [CCT of 4000K]	Temperature	
Beam Angle (Nom)	180 degree(s)	Ambient temperature range	-4 °F to 131 °F
Luminous Flux	1,600 lm	T-Case Maximum (Nom)	131 °F
Color Designation	Cool White (CW)	Controls and Dimming	
Correlated Color Temperature (Nom)	4000 K	Dimmable	Yes
Luminous Efficacy (rated) (Nom)	168.00 lm/W	Mechanical and Housing	
Color Consistency	<6	Bulb Finish	Frosted
Color rendering index (CRI)	80	Bulb Material	Plastic
LLMF At End Of Nominal Lifetime (Nom)	70 %	Product Length	47-1/4 inch
Operating and Electrical			
Line Frequency	50 to 60 Hz		

T8

Bulb Shape	T8
Approval and Application	
Energy Saving Product	Yes
Approval Marks	RoHS compliance UL certificate DLC compliance
Energy Consumption kWh/1000 h	- kWh
Product Data	
Order product name	9.5T8/MAS/48-840/IF16/P/DIM 10/1

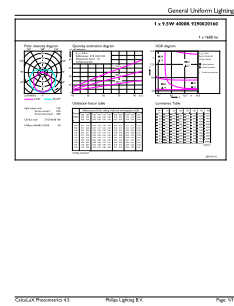
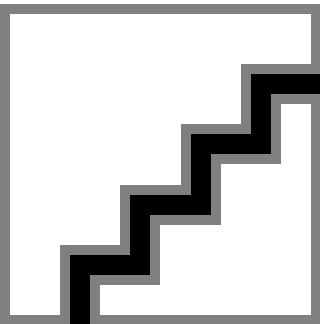
Full product name	9.5T8/MAS/48-840/IF16/P/DIM 10/1
Order code	473990
Material Nr. (12NC)	929002016004
Numerator - Quantity Per Pack	1
EAN/UPC - Product/Case	046677473990
Numerator - Packs per outer box	10
EAN/UPC - Case	50046677473995

Dimensional drawing



Product	D1	D2	A1	A2	A3
9.5T8/MAS/48-840/ IF16/P/DIM 10/1	1-1/16 inch	1-1/8 inch	47-3/16 inch	47-1/2 inch	47-3/4 inch

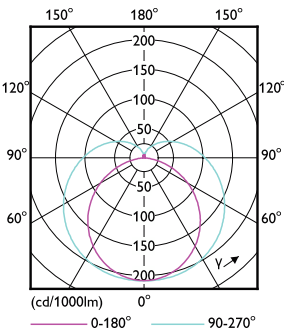
Photometric data



Spectral Power Distribution Colour - 9.5T8/MAS/48-840/IF16/P/DIM 10/1

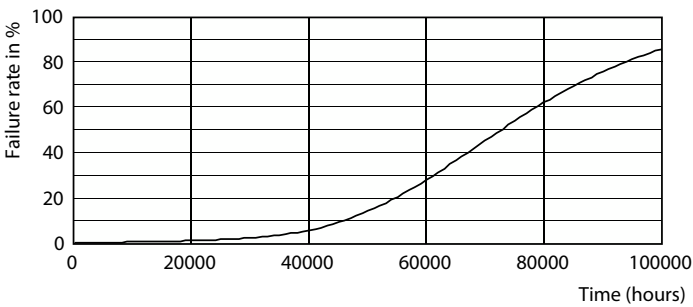
General uniform lighting - 9.5T8/MAS/48-840/IF16/P/DIM 10/1

Photometric data

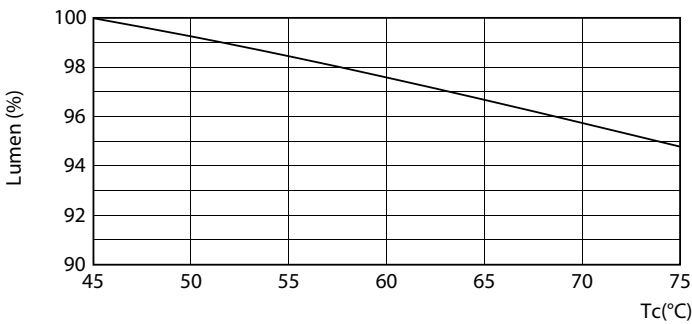


Light Distribution Diagram - 9.5T8/MAS/48-840/IF16/P/DIM 10/1

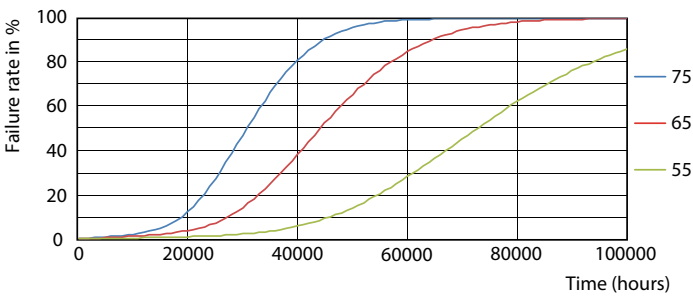
Lifetime



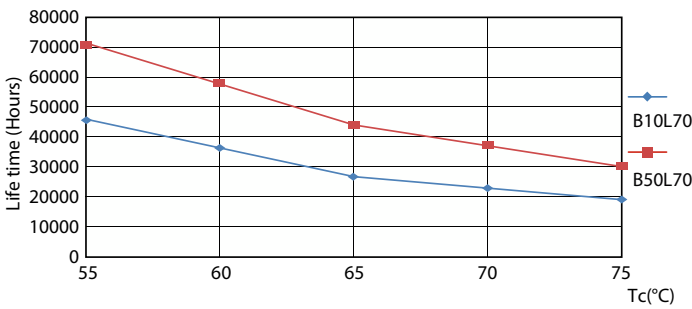
Life Expectancy Diagram - 9.5T8/MAS/48-840/IF16/P/DIM 10/1



Lumen Maintenance Diagram - 9.5T8/MAS/48-840/IF16/P/DIM 10/1



Life Expectancy Diagram - 9.5T8/MAS/48-840/IF16/P/DIM 10/1



Life Expectancy Diagram - 9.5T8/MAS/48-840/IF16/P/DIM 10/1

Lifetime



Lumen Maintenance Diagram - 9.5T8/MAS/48-840/IF16/P/DIM 10/1

