



MASTER LEDtube EM/ Mains

MASTER LEDtube 1200mm UO 15.5W 830 T8

The Philips MASTER LEDtube integrates a LED light source into a traditional fluorescent form factor. Its unique design creates a perfectly uniform visual appearance which cannot be distinguished from traditional fluorescent. This product is the ideal solution for up lighting in general lighting applications.

Product data

General Information	
Cap base	G13 [Medium Bi-Pin Fluorescent]
Nominal lifetime (nom.)	60000 h
Switching cycle	200000X

Light Technical	
Colour Code	830 [CCT of 3,000 K]
Technical Beam Angle (Nom)	160 °
Lamp Luminous Flux 25°C EL (Nom)	2300 lm
Colour Temperature, horizontal (Nom)	3000 K
Colour consistency	<6
Colour Rendering Index,horiz (Nom)	83
LLMF at end of nominal lifetime (nom.)	70 %

Operating and Electrical	
Input frequency	50 to 60 Hz
Power (Rated) (Nom)	15.5 W
Lamp current (max.)	73 mA
Lamp current (min.)	67 mA
Starting time (nom.)	0.5 s

Warm-up time to 60% light (nom.)	0.5 s
Power factor (nom.)	0.9
Voltage (Nom)	220-240 V

Temperature	
T ambient (max.)	45 °C
T ambient (min.)	-20 °C
T storage (max.)	65 °C
T storage (min.)	-40 °C
T-Case maximum (nom.)	55 °C

Controls and Dimming	
Dimmable	No

Mechanical and Housing	
Product length	1200 mm

Approval and Application	
Energy efficiency label (EEL)	A++
Energy-saving product	Yes

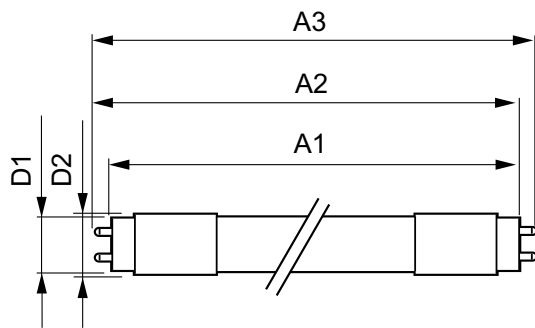
MASTER LEDtube EM/Mains

Approval marks	RoHS compliance CE marking KEMA Keur certificate
Energy Consumption kWh/1000 h	16 kWh
Product Data	
Full product code	871869964721600
Order product name	MASTER LEDtube 1200mm UO 15.5W 830 T8
EAN/UPC – product	8718699647216

Order code	929002020502
Numerator – quantity per pack	1
Numerator – packs per outer box	10
Material no. (12NC)	929002020502
Net weight (piece)	0.251 kg

Warnings and Safety

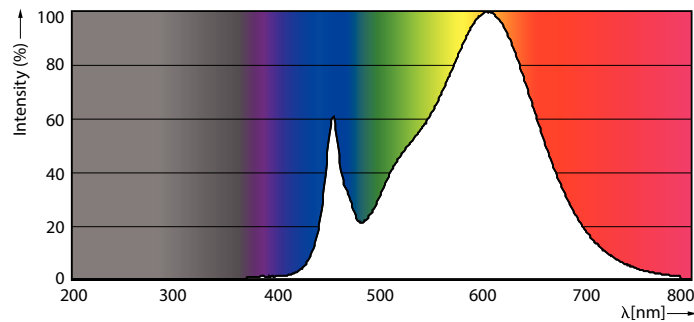
Dimensional drawing



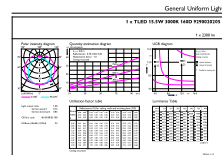
TLED 4ft 220-240V15.5-36W 2300lm3000KG13

Product	D1	D2	A1	A2	A3
MASTER LEDtube 1200mm UO 15.5W 830 T8	25.8 mm	28 mm	1198.2 mm	1205.3 mm	1212.4 mm

Photometric data



TLED_4ft_220-240V15.5-36W_2300lm_3000K_G13

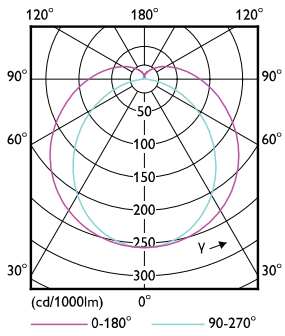


002021 Photometric 13 - Allip Lighting 13 - Page 1/1

TLED_4ft_220-240V15.5-36W_2300lm_3000K_G13

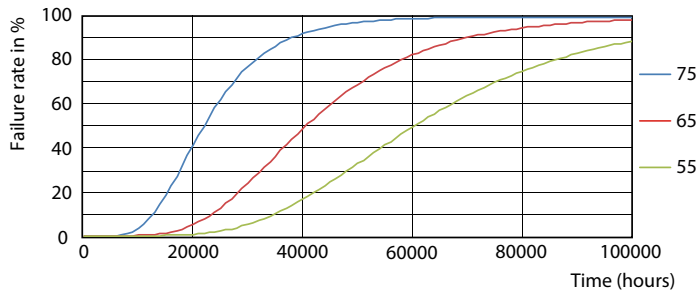
MASTER LEDtube EM/Mains

Photometric data

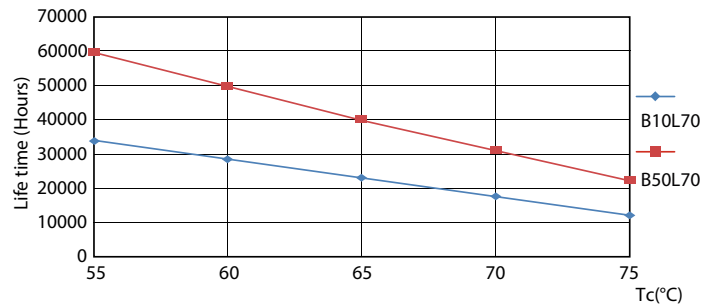


TLED_4ft_220-240V15.5-36W_G13-LDD

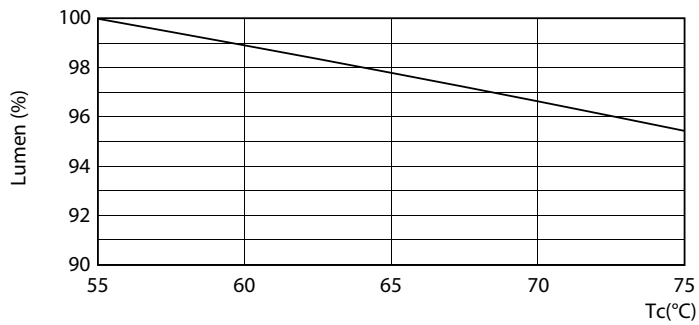
Lifetime



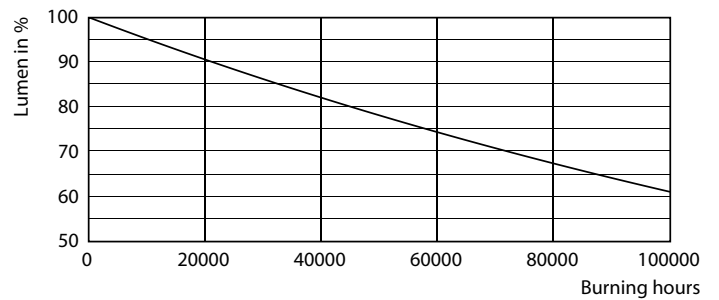
TLED_220-240V_G13-FailureRate



TLED_220-240V_G13-LifetimeVsTc



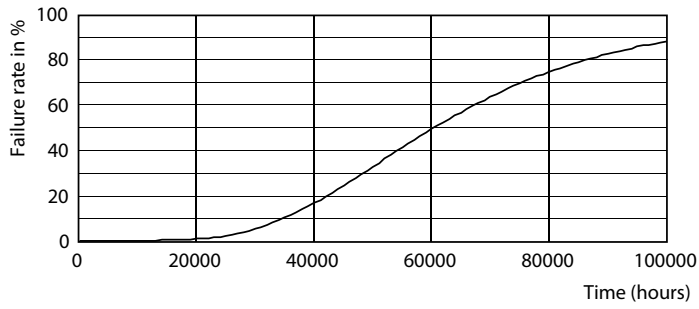
TLED_220-240V_G13-LumenVsTc



TLED_220-240V_G13

MASTER LEDtube EM/Mains

Lifetime



TLED_220-240V_G13

