



# MASTER LEDtube EM/ Mains

## MASTER LEDtube 1200mm UO 15.5W 840 T8

The Philips MASTER LEDtube integrates a LED light source into a traditional fluorescent form factor. Its unique design creates a perfectly uniform visual appearance which cannot be distinguished from traditional fluorescent. For those that are looking for value for money within limited budget and re-lamping efforts for better light effect and lifetime.

### Product data

General Information	
Cap base	G13 ROT (Rotating) [ Medium Bi-Pin Fluorescent]
EU RoHS compliant	Yes
Nominal lifetime (nom.)	60000 h
Switching cycle	200,000X
Light Technical	
Colour code	841 [ CCT of 4100K (841)]
Beam Angle (Nom)	160 °
Luminous flux (nom.)	2500 lm
Colour designation	Cool White (CW)
Correlated Colour Temperature (Nom)	4000 K
Luminous efficacy (rated) (nom.)	161.00 lm/W
Colour consistency	<6
Color rendering index (nom.)	83
LLMF at end of nominal lifetime (nom.)	70 %
Operating and Electrical	
Input frequency	50 to 60 Hz

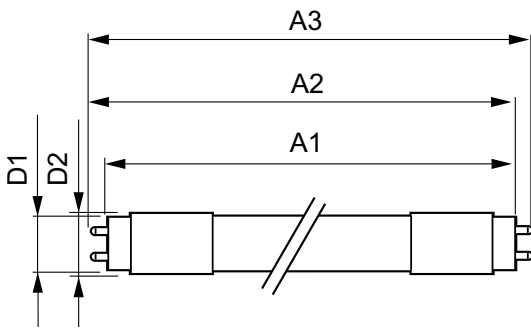
Power (Rated) (Nom)	15.5 W
Lamp current (max.)	73 mA
Lamp current (min.)	67 mA
Starting time (nom.)	0.5 s
Warm-up time to 60% light (nom.)	0.5 s
Power factor (nom.)	0.9
Voltage (Nom)	220-240 V
Temperature	
T ambient (max.)	45 °C
T ambient (min.)	-20 °C
T storage (max.)	65 °C
T storage (min.)	-40 °C
T-Case maximum (nom.)	55 °C
Controls and Dimming	
Dimmable	No
Mechanical and Housing	
Bulb material	Plastic

# MASTER LEDtube EM/Mains

Product length	1200 mm
<b>Approval and Application</b>	
Energy efficiency label (EEL)	A++
Energy-saving product	Yes
Approval marks	RoHS compliance CE marking KEMA Keur certificate
Energy Consumption kWh/1000 h	16 kWh
<b>Product Data</b>	
Full product code	871869964723000

Order product name	MASTER LEDtube 1200mm UO 15.5W 840 T8
EAN/UPC – product	8718699647230
Order code	64723000
Numerator – quantity per pack	1
Numerator – packs per outer box	10
Material no. (12NC)	929002020602
Net weight (piece)	0.251 kg

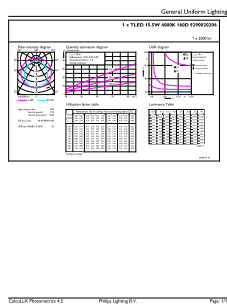
## Dimensional drawing



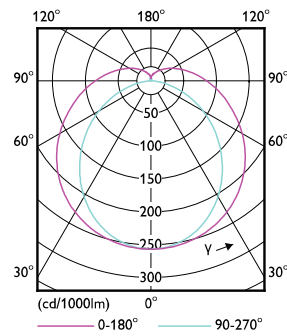
TLED 4ft 220-240V15.5-36W 2500lm4000KG13

Product	D1	D2	A1	A2	A3
MASTER LEDtube 1200mm UO 15.5W 840 T8	25.8 mm	28 mm	1198.2 mm	1205.3 mm	1212.4 mm

## Photometric data



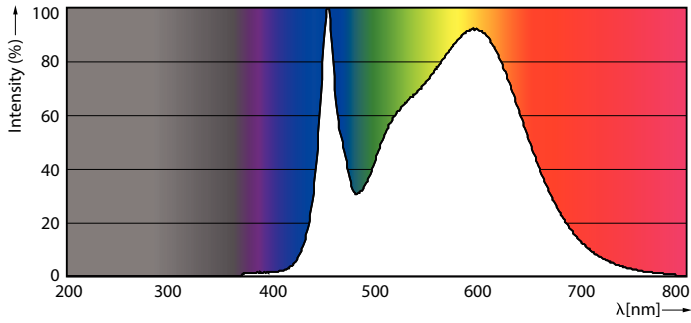
TLED\_4ft\_220-240V15.5-36W\_2500lm\_4000K\_G13



TLED\_4ft\_220-240V15.5-36W\_G13-LDD

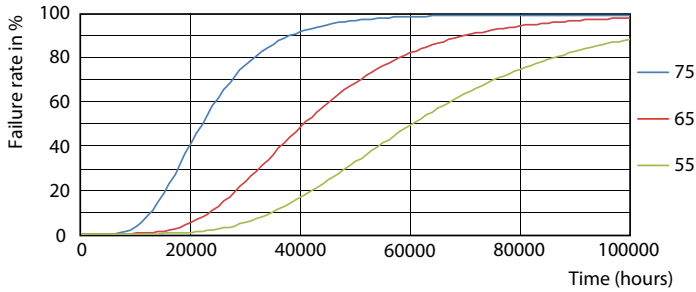
# MASTER LEDtube EM/Mains

## Photometric data

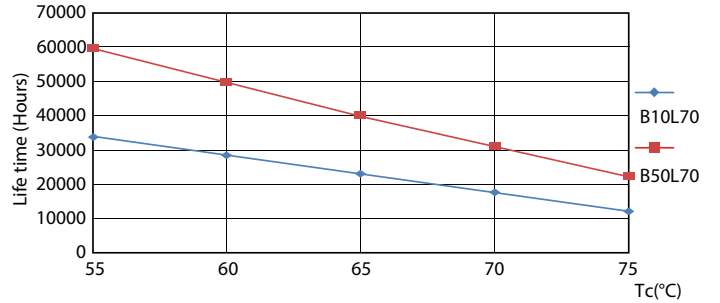


TLED\_4ft\_220-240V15.5-36W\_2500lm\_4000K\_G13

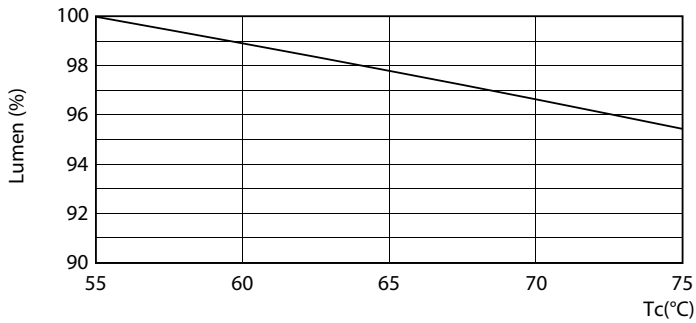
## Lifetime



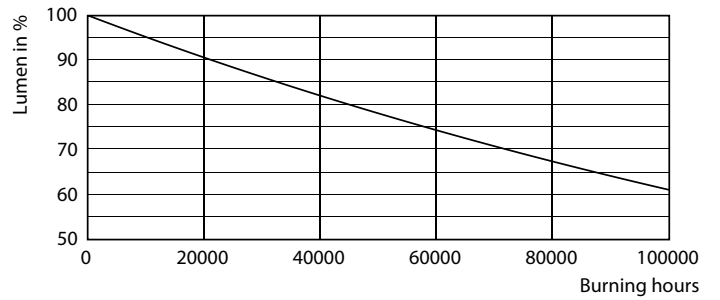
TLED\_220-240V\_G13-FailureRate



TLED\_220-240V\_G13-LifetimeVsTc



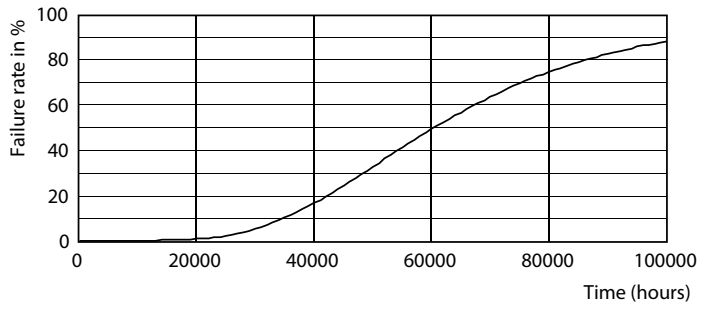
TLED\_220-240V\_G13-LumenVsTc



TLED\_220-240V\_G13

# MASTER LEDtube EM/Mains

## Lifetime



TLED\_220-240V\_G13

