



MASTER LEDtube EM/ Mains

MASTER LEDtube 1500mm UO 23W 840 T8

The Philips MASTER LEDtube integrates a LED light source into a traditional fluorescent form factor. Its unique design creates a perfectly uniform visual appearance which cannot be distinguished from traditional fluorescent. This product is the ideal solution for up lighting in general lighting applications.

Product data

General Information		Starting time (nom.)	
Cap base	G13 [Medium Bi-Pin Fluorescent]		0.5 s
EU RoHS compliant	Yes	Warm-up time to 60% light (nom.)	0.5 s
Nominal lifetime (nom.)	60000 h	Power factor (nom.)	0.9
Switching cycle	200000X	Voltage (Nom)	220-240 V
Light Technical		Temperature	
Colour Code	840 [CCT of 4,000 K]	T ambient (max.)	45 °C
Technical Beam Angle (Nom)	160 °	T ambient (min.)	-20 °C
Lamp Luminous Flux 25°C EL (Nom)	3700 lm	T storage (max.)	65 °C
Colour Temperature, horizontal (Nom)	4000 K	T storage (min.)	-40 °C
Colour consistency	<6	T-Case maximum (nom.)	60 °C
Colour Rendering Index,horiz (Nom)	83	Controls and Dimming	
LLMF at end of nominal lifetime (nom.)	70 %	Dimmable	No
Operating and Electrical		Mechanical and Housing	
Input frequency	50 to 60 Hz	Bulb material	Plastic
Power (Rated) (Nom)	23 W	Product length	1500 mm
Lamp current (max.)	108 mA		
Lamp current (min.)	99 mA		

MASTER LEDtube EM/Mains

Approval and Application

Energy efficiency label (EEL)	A++
Energy-saving product	Yes
Approval marks	RoHS compliance CE marking KEMA Keur certificate
Energy Consumption kWh/1000 h	23 kWh

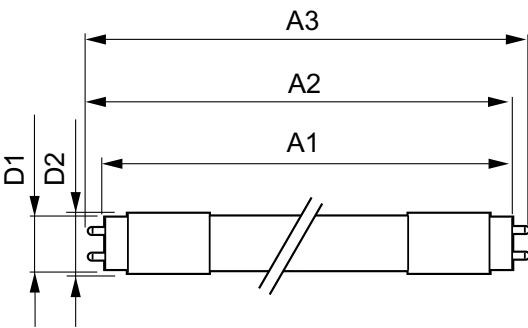
Product Data

Full product code	871869964729200
-------------------	-----------------

Order product name	MASTER LEDtube 1500mm UO 23W 840 T8
EAN/UPC – product	8718699647292
Order code	929002020902
Numerator – quantity per pack	1
Numerator – packs per outer box	10
Material no. (12NC)	929002020902
Net weight (piece)	0.310 kg

Warnings and Safety

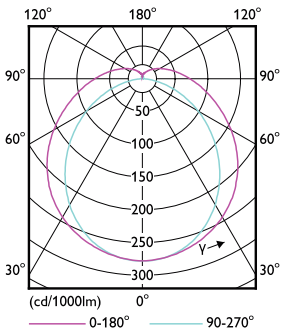
Dimensional drawing



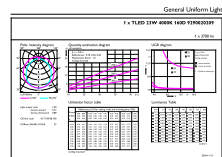
TLED 5ft 220-240V 23-58W 3700lm4000K G13

Product	D1	D2	A1	A2	A3
MASTER LEDtube 1500mm UO 23W 840 T8	25.8 mm	28 mm	1498.7 mm	1505.8 mm	1512.9 mm

Photometric data



TLED_5ft_220-240V_23-58W_G13

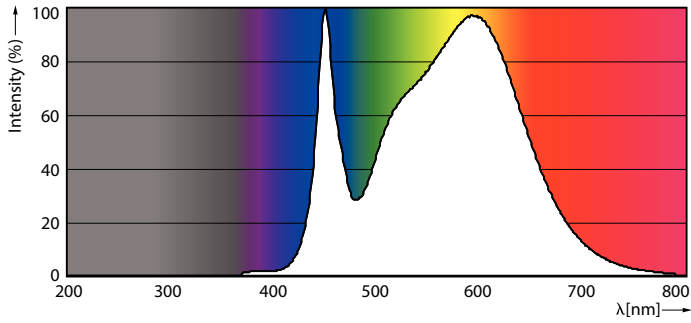


General Uniform Lighting

TLED_5ft_220-240V_23-58W_3700lm_4000K_G13

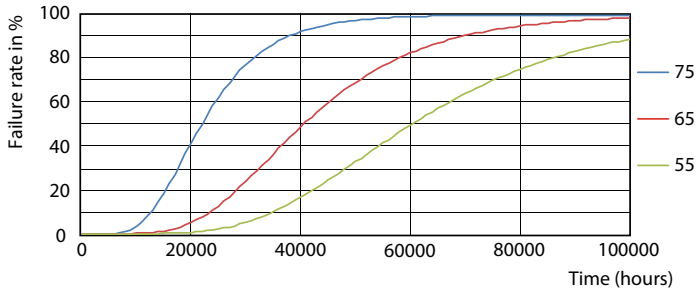
MASTER LEDtube EM/Mains

Photometric data

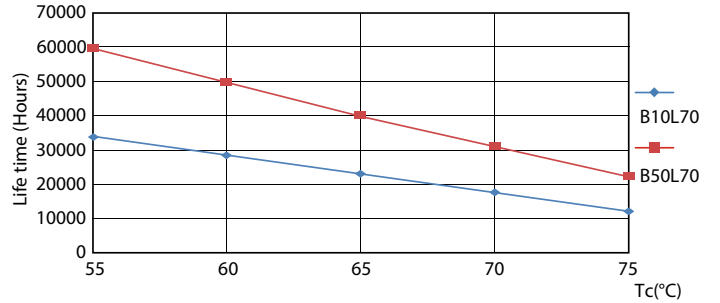


TLED_5ft_220-240V_23-58W_3700lm_4000K_G13

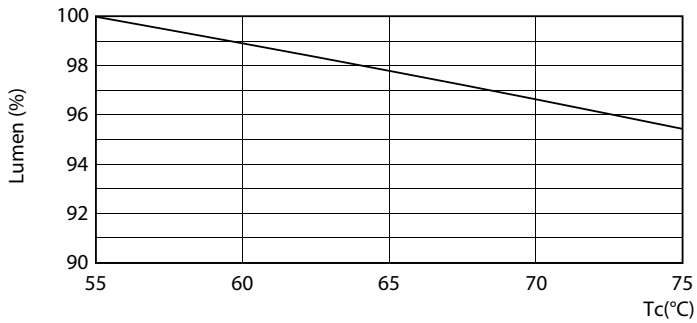
Lifetime



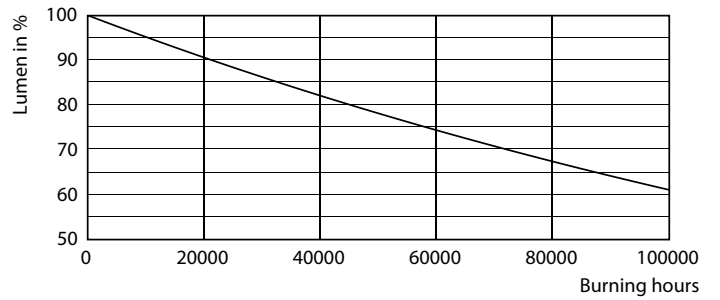
TLED_220-240V_G13-FailureRate



TLED_220-240V_G13-LifetimeVsTc



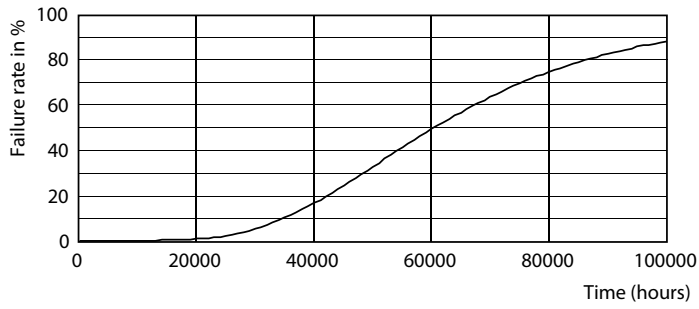
TLED_220-240V_G13-LumenVsTc



TLED_220-240V_G13

MASTER LEDtube EM/Mains

Lifetime



TLED_220-240V_G13

