



# MASTER LEDtube EM/ Mains

## MASTER LEDtube 1500mm UO 23W 865 T8

The Philips MASTER LEDtube integrates a LED light source into a traditional fluorescent form factor. Its unique design creates a perfectly uniform visual appearance which cannot be distinguished from traditional fluorescent. This product is the ideal solution for up lighting in general lighting applications.

### Product data

General Information		Starting time (nom.)	
Cap base	G13 [ Medium Bi-Pin Fluorescent]		0.5 s
EU RoHS compliant	Yes	Warm-up time to 60% light (nom.)	0.5 s
Nominal lifetime (nom.)	60000 h	Power factor (nom.)	0.9
Switching cycle	200000X	Voltage (Nom)	220-240 V
Light Technical		Temperature	
Colour Code	865 [ CCT of 6,500 K]	T ambient (max.)	45 °C
Technical Beam Angle (Nom)	160 °	T ambient (min.)	-20 °C
Lamp Luminous Flux 25°C EL (Nom)	3700 lm	T storage (max.)	65 °C
Colour Temperature, horizontal (Nom)	6500 K	T storage (min.)	-40 °C
Colour consistency	<6	T-Case maximum (nom.)	60 °C
Colour Rendering Index,horiz (Nom)	83	Controls and Dimming	
LLMF at end of nominal lifetime (nom.)	70 %	Dimmable	No
Operating and Electrical		Mechanical and Housing	
Input frequency	50 to 60 Hz	Bulb material	Plastic
Power (Rated) (Nom)	23 W	Product length	1500 mm
Lamp current (max.)	108 mA		
Lamp current (min.)	99 mA		

# MASTER LEDtube EM/Mains

## Approval and Application

Energy efficiency label (EEL)	A++
Energy-saving product	Yes
Approval marks	RoHS compliance CE marking KEMA Keur certificate
Energy Consumption kWh/1000 h	23 kWh

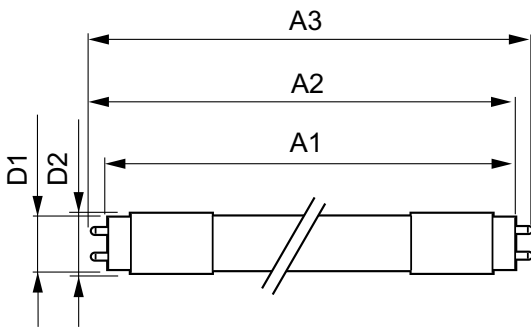
## Product Data

Full product code	871869964731500
-------------------	-----------------

Order product name	MASTER LEDtube 1500mm UO 23W 865 T8
EAN/UPC – product	8718699647315
Order code	929002021002
Numerator – quantity per pack	1
Numerator – packs per outer box	10
Material no. (12NC)	929002021002
Net weight (piece)	0.310 kg

## Warnings and Safety

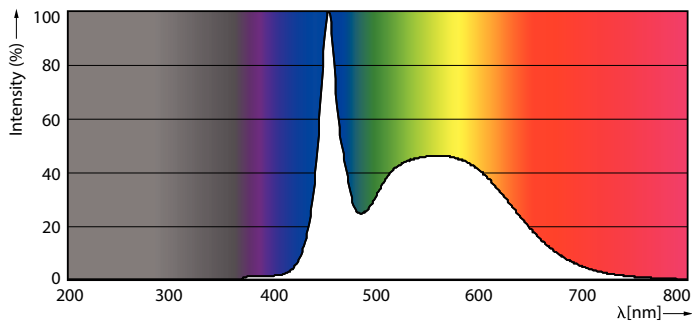
### Dimensional drawing



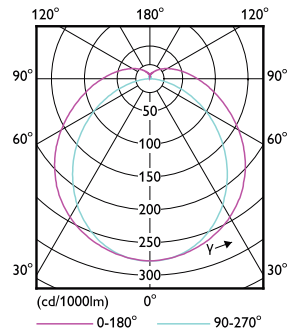
TLED 5ft 220-240V 23-58W 3700lm6500K G13

Product	D1	D2	A1	A2	A3
MASTER LEDtube 1500mm UO 23W 865 T8	25.8 mm	28 mm	1498.7 mm	1505.8 mm	1512.9 mm

### Photometric data



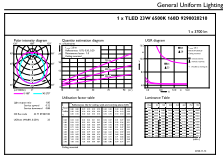
TLED\_5ft\_220-240V\_23-58W\_3700lm\_6500K\_G13



TLED\_5ft\_220-240V\_23-58W\_G13

# MASTER LEDtube EM/Mains

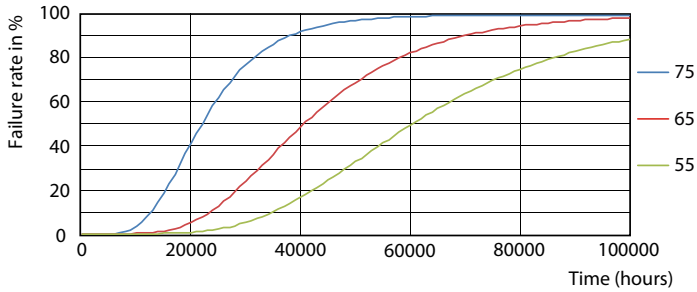
## Photometric data



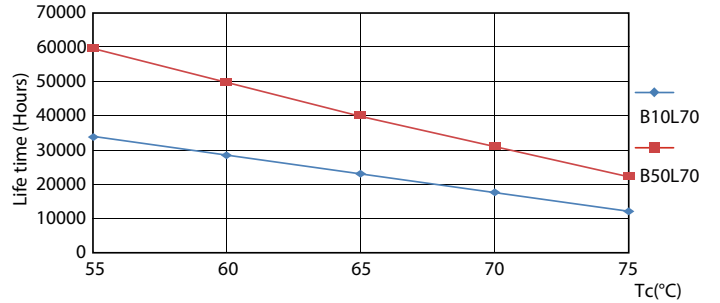
© 2020 Philips Lighting B.V. Page 11

TLED\_5ft\_220-240V\_23-58W\_3700lm\_6500K\_G13

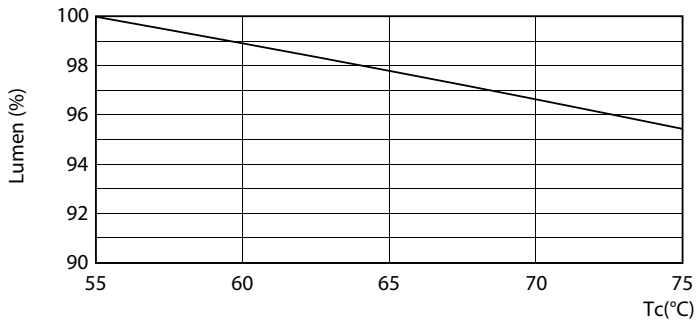
## Lifetime



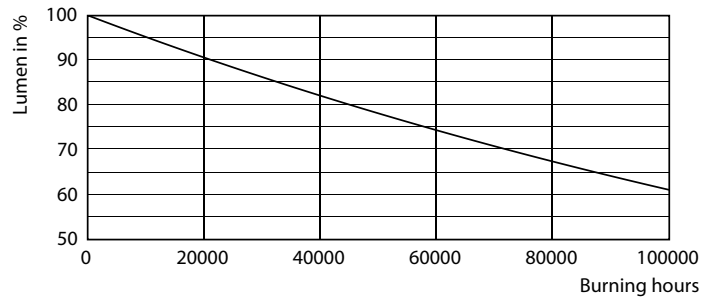
TLED\_220-240V\_G13-FailureRate



TLED\_220-240V\_G13-LifetimeVsTc



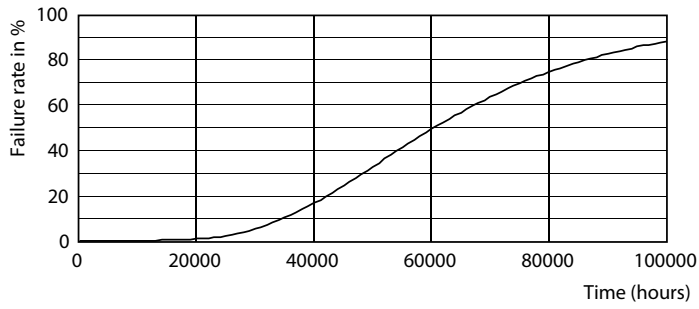
TLED\_220-240V\_G13-LumenVsTc



TLED\_220-240V\_G13

# MASTER LEDtube EM/Mains

## Lifetime



TLED\_220-240V\_G13

