

# Master Value LEDtube T8

## MASTER LEDtube VLE 600mm HO 8W 865 T8

A high-performance LED solution, the professional Master Value LED tube is ideal for replacing T8 fluorescent lamps using EM ballast or installing directly on the mains. This product provides a uniform lighting effect for use in all general lighting, as well as instant energy-efficiency, making for an environmentally friendly solution.

### Product data

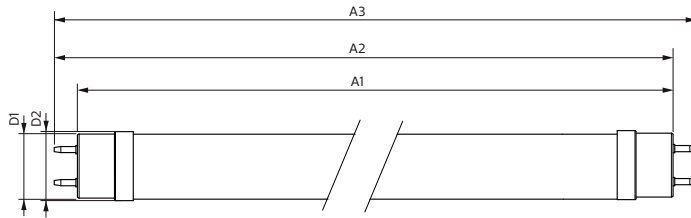
General Information		
Cap base	G13 [ Medium Bi-Pin Fluorescent]	
Nominal lifetime (nom.)	50000 h	
Switching cycle	200000X	
Light Technical		
Colour code	865 [ CCT of 6,500 K]	
Beam Angle (Nom)	240 °	
Luminous flux (nom.)	1050 lm	
Correlated colour temperature (nom.)	6500 K	
Colour consistency	<6	
Color rendering index (nom.)	83	
LLMF at end of nominal lifetime (nom.)	70 %	
Operating and Electrical		
Input frequency	50 to 60 Hz	
Power (Rated) (Nom)	8 W	
Lamp current (max.)	38 mA	
Lamp current (min.)	34 mA	
Starting time (nom.)	0.5 s	
Temperature		
T ambient (max.)	45 °C	
T ambient (min.)	-20 °C	
T storage (max.)	65 °C	
T storage (min.)	-40 °C	
T-Case maximum (nom.)	50 °C	
Controls and Dimming		
Dimmable	No	
Mechanical and Housing		
Bulb material	Glass	
Product length	600 mm	
Approval and Application		
Energy efficiency label (EEL)	A++	
Warm-up time to 60% light (nom.)		0.5 s
Power factor (nom.)		0.9
Voltage (Nom)		220-240 V

# Master Value LEDtube T8

Energy-saving product	Yes
Approval marks	RoHS compliance CE marking KEMA Keur certificate
Energy Consumption kWh/1000 h	8 kWh
<b>Product Data</b>	
Full product code	871869964683700
Order product name	MASTER LEDtube VLE 600mm HO 8W 865 T8

EAN/UPC – product	8718699646837
Order code	64683700
Numerator – quantity per pack	1
Numerator – packs per outer box	10
Material no. (12NC)	929002021302
Net weight (piece)	0.120 kg

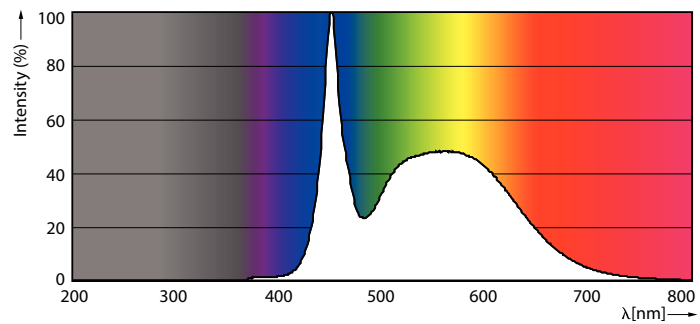
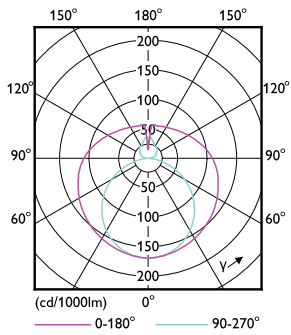
## Dimensional drawing



Product	D1	D2	A1	A2	A3
MASTER LEDtube VLE 600mm HO 8W 865 T8	25.8 mm	28 mm	588.5 mm	595.5 mm	602.5 mm

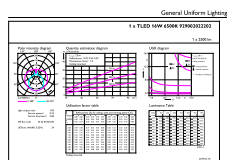
## TLED 2ft 220-240V 8-18W 1050lm 6500K G13

## Photometric data



## LEDtube 220-240V G13

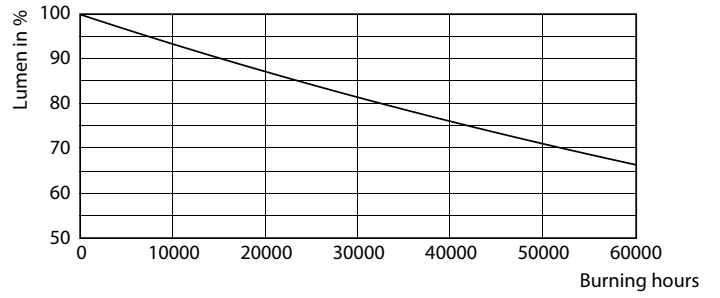
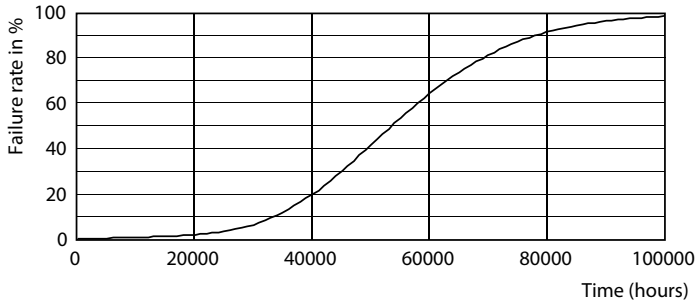
## LEDtube 220-240V G13 6500k



## LEDtube 220-240V G13 2ft 1050lm 6500k

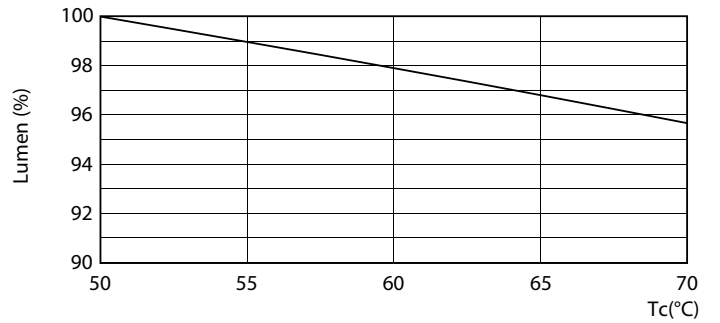
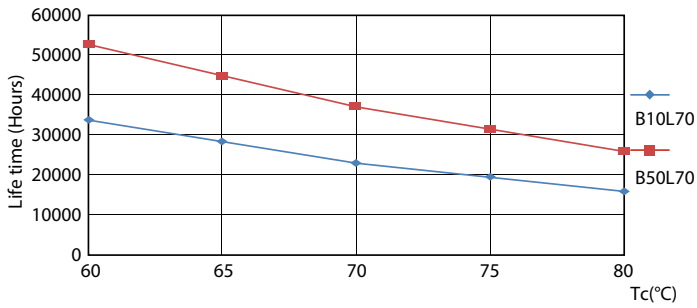
# Master Value LEDtube T8

## Lifetime



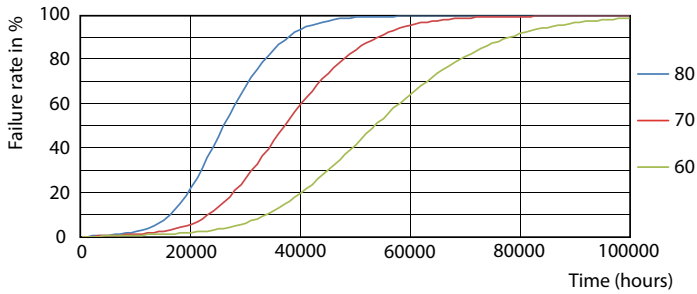
LEDtube 220-240V G13

LEDtube 220-240V G13



LEDtube 220-240V G13 LifetimeVsTc

LEDtube 220-240V G13 2ft LumenVsTc



LEDtube 220-240V G13 FailureRate

## Master Value LEDtube T8

