

Master Value LEDtube T8

MASTER LEDtube VLE 1200mm HO 14W 865 T8

A high-performance LED solution, the professional Master Value LED tube is ideal for replacing T8 fluorescent lamps using EM ballast or installing directly on the mains. This product provides a uniform lighting effect for use in all general lighting, as well as instant energy-efficiency, making for an environmentally friendly solution.

Product data

General Information	
Cap base	G13 [Medium Bi-Pin Fluorescent]
EU RoHS compliant	Yes
Nominal lifetime (nom.)	50000 h
Switching cycle	200,000X

Light Technical	
Colour code	865 [CCT of 6,500 K]
Beam Angle (Nom)	240 °
Luminous flux (nom.)	2100 lm
Colour designation	Cool Daylight
Correlated Colour Temperature (Nom)	6500 K
Luminous efficacy (rated) (nom.)	150.00 lm/W
Colour consistency	<6
Color rendering index (nom.)	83
LLMF at end of nominal lifetime (nom.)	70 %

Operating and Electrical	
Input frequency	50 to 60 Hz
Power (Rated) (Nom)	14 W

Lamp current (max.)	66 mA
Lamp current (min.)	60 mA
Starting time (nom.)	0.5 s
Warm-up time to 60% light (nom.)	0.5 s
Power factor (nom.)	0.9
Voltage (Nom)	220-240 V

Temperature	
T ambient (max.)	45 °C
T ambient (min.)	-20 °C
T storage (max.)	65 °C
T storage (min.)	-40 °C
T-Case maximum (nom.)	55 °C

Controls and Dimming	
Dimmable	No

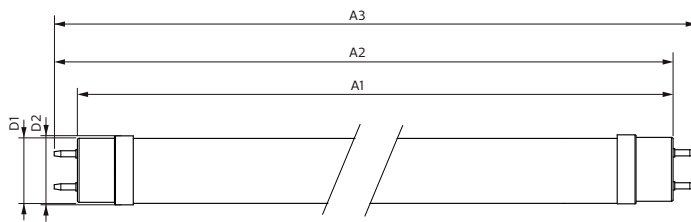
Mechanical and Housing	
Bulb material	Glass

Master Value LEDtube T8

Product length	1200 mm
Approval and Application	
Energy efficiency label (EEL)	A++
Energy-saving product	Yes
Approval marks	RoHS compliance CE marking KEMA Keur certificate
Energy Consumption kWh/1000 h	14 kWh
Product Data	
Full product code	871869964689900

Order product name	MASTER LEDtube VLE 1200mm HO 14W 865 T8
EAN/UPC – product	8718699646899
Order code	64689900
Numerator – quantity per pack	1
Numerator – packs per outer box	10
Material no. (12NC)	929002021602
Net weight (piece)	0.220 kg

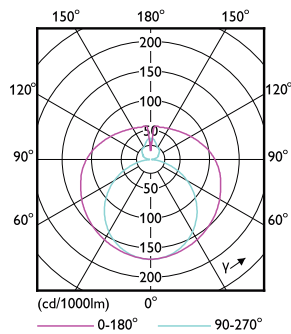
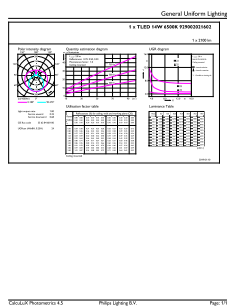
Dimensional drawing



Product	D1	D2	A1	A2	A3
MASTER LEDtube VLE 1200mm HO 14W 865 T8	25.8 mm	28 mm	1198.2 mm	1205.3 mm	1212.4 mm

TLED 4ft 220-240V 14-36W2100lm 6500K G13

Photometric data

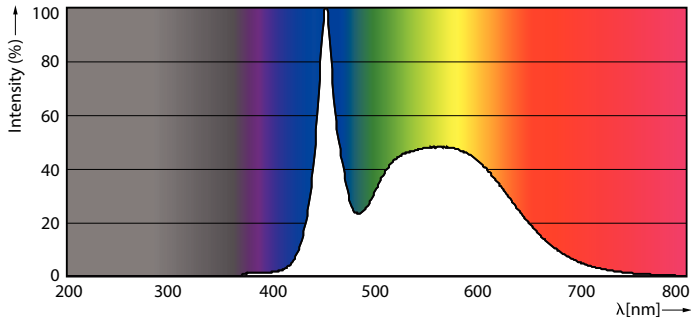


LEDtube 220-240V G13 4ft 2100lm 6500k

LEDtube 220-240V G13

Master Value LEDtube T8

Photometric data



LEDtube 220-240V G13 6500k

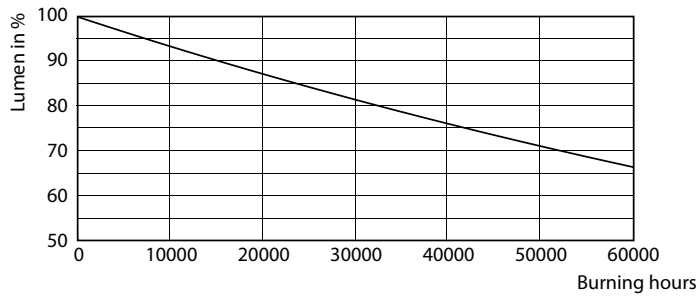
Lifetime



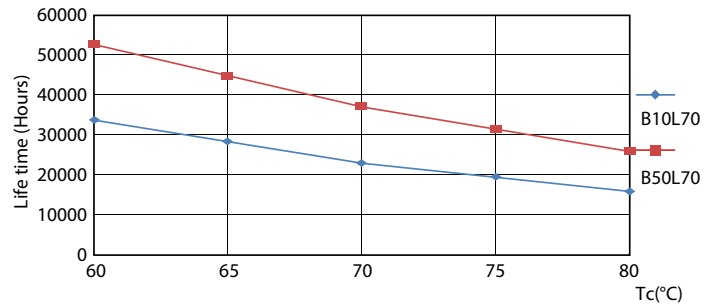
LEDtube 220-240V G13 LumenVsTc



LEDtube 220-240V G13



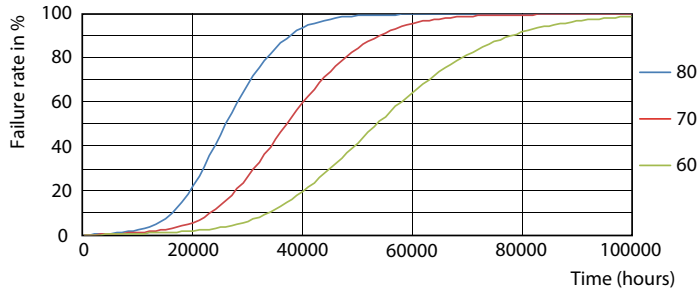
LEDtube 220-240V G13



LEDtube 220-240V G13 LifetimeVsTc

Master Value LEDtube T8

Lifetime



LEDtube 220-240V G13 FailureRate

