



Master Value LEDtube T8

MASTER LEDtube VLE 1500mm HO 20.5W 865 T8

A high-performance LED solution, the professional Master Value LED tube is ideal for replacing T8 fluorescent lamps using EM ballast or installing directly on the mains. This product provides a uniform lighting effect for use in all general lighting, as well as instant energy-efficiency, making for an environmentally friendly solution.

Product data

| General Information | | Starting time (nom.) | |
|--|----------------------------------|----------------------------------|-----------|
| Cap base | G13 [Medium Bi-Pin Fluorescent] | | 0.5 s |
| EU RoHS compliant | Yes | Warm-up time to 60% light (nom.) | 0.5 s |
| Nominal lifetime (nom.) | 50000 h | Power factor (nom.) | 0.9 |
| Switching cycle | 200000X | Voltage (Nom) | 220-240 V |
| Light Technical | | Temperature | |
| Colour code | 865 [CCT of 6,500 K] | T ambient (max.) | 45 °C |
| Beam Angle (Nom) | 240 ° | T ambient (min.) | -20 °C |
| Luminous flux (nom.) | 3100 lm | T storage (max.) | 65 °C |
| Correlated Colour Temperature (Nom) | 6500 K | T storage (min.) | -40 °C |
| Colour consistency | <6 | T-Case maximum (nom.) | 60 °C |
| Color rendering index (nom.) | 83 | Controls and Dimming | |
| LLMF at end of nominal lifetime (nom.) | 70 % | Dimmable | No |
| Operating and Electrical | | Mechanical and Housing | |
| Input frequency | 50 to 60 Hz | Bulb material | Glass |
| Power (Rated) (Nom) | 20.5 W | Product length | 1500 mm |
| Lamp current (max.) | 97 mA | | |
| Lamp current (min.) | 89 mA | | |

Master Value LEDtube T8

Approval and Application

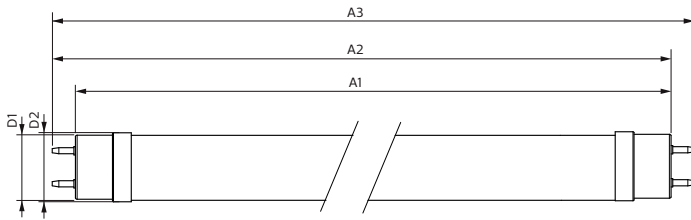
| | |
|-------------------------------|--|
| Energy efficiency label (EEL) | A++ |
| Energy-saving product | Yes |
| Approval marks | RoHS compliance CE marking KEMA Keur certificate |
| Energy Consumption kWh/1000 h | 21 kWh |

Product Data

| | |
|--------------------|---|
| Full product code | 871869964695000 |
| Order product name | MASTER LEDtube VLE 1500mm HO 20.5W 865 T8 |

| | |
|---------------------------------|---------------|
| EAN/UPC – product | 8718699646950 |
| Order code | 64695000 |
| Numerator – quantity per pack | 1 |
| Numerator – packs per outer box | 10 |
| Material no. (12NC) | 929002021902 |
| Net weight (piece) | 0.270 kg |

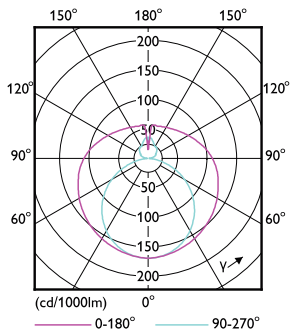
Dimensional drawing



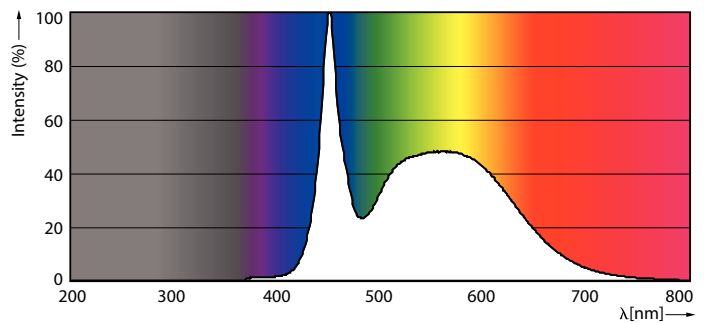
| Product | D1 | D2 | A1 | A2 | A3 |
|---|---------|-------|-----------|-----------|-----------|
| MASTER LEDtube VLE 1500mm HO 20.5W 865 T8 | 25.8 mm | 28 mm | 1498.7 mm | 1505.8 mm | 1512.9 mm |

TLED 5ft 220-240V20.5-58W3100lm6500K G13

Photometric data



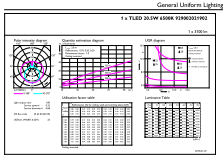
LEDtube 220-240V G13



LEDtube 220-240V G13 6500k

Master Value LEDtube T8

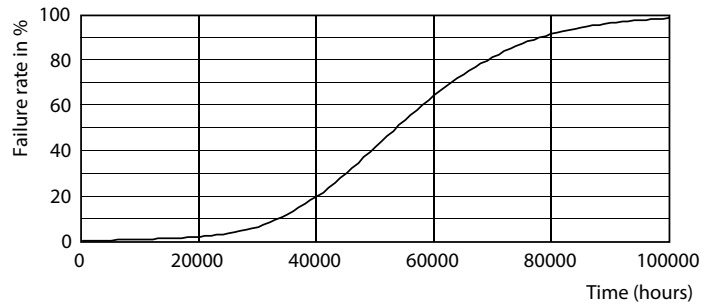
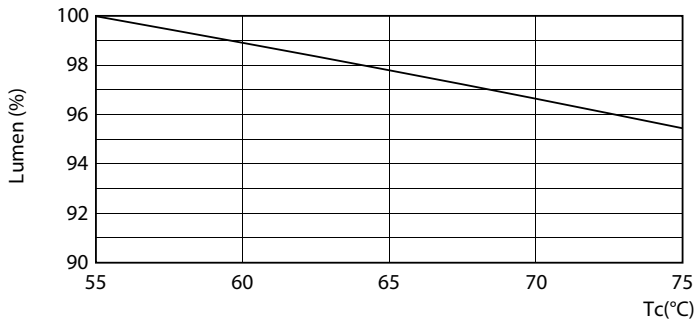
Photometric data



© 2020 Philips Lighting B.V. Page 11

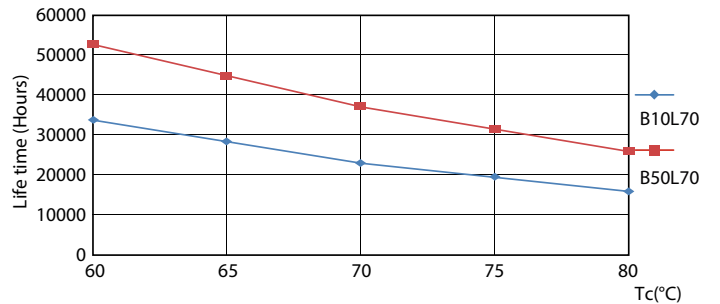
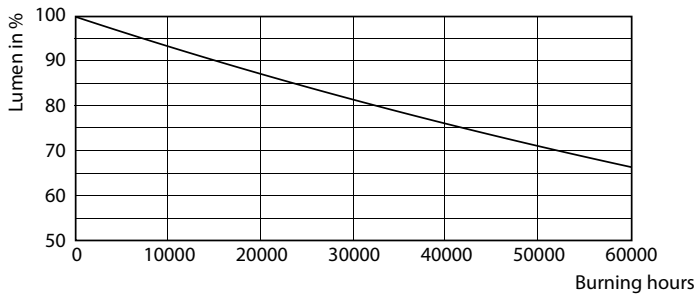
LEDtube 220-240V G13 5ft 3100lm 6500k

Lifetime



LEDtube 220-240V G13 LumenVsTc

LEDtube 220-240V G13

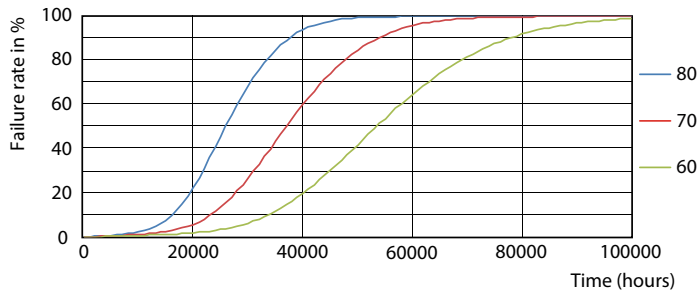


LEDtube 220-240V G13

LEDtube 220-240V G13 LifetimeVsTc

Master Value LEDtube T8

Lifetime



LEDtube 220-240V G13 FailureRate

