



MASTER Value LEDtube T8



MASTER LEDtube VLE 1500mm HO 20.5W 865 T8

A high-performance LED solution, the professional MASTER Value LED tube is ideal for replacing T8 fluorescent lamps using EM ballast or installing directly on the mains. This product provides an optimal combination of value and performance – for use in all general lighting, office, industry, retail and hospitality applications. The unique design of this LED T8 tube light offers wide compatibility, safety and fast installation, as well as instant energy savings.

Product data

General Information	
Cap base	G13 [Medium Bi-Pin Fluorescent]
Nominal lifetime	60,000 h
Switching Cycle	200,000
Lighting Technology	LED
Flux measurement reference	Sphere
CE mark	Yes
EU RoHS compliant	Yes

Light Technical	
Colour Code	865 [CCT of 6500K]
Beam angle (nom.)	190 degree(s)
Luminous Flux	3,100 lm
Colour designation	Cool Daylight
Correlated Colour Temperature	6500 K
Luminous efficacy (rated) (nom.)	151 lm/W
Colour consistency	<6
Colour rendering index (CRI)	80
LLMF at end of nominal lifetime (nom.)	70 %

Flickering value (PstLM)	1
Stroboscopic effect	0.4
Photobiological safety according to EN 62471	RG0

Operating and Electrical	
Line Frequency	50 to 60 Hz
Input frequency	50 to 60 Hz
Power Consumption	20.5 W
Lamp current (max.)	97 mA
Lamp current (min.)	89 mA
Starting time (nom.)	0.5 s
Warm-up time to 60% light	0.5 s
Power Factor (Fraction)	0.9
Voltage (nom.)	220-240 V
LED alternative to fluorescent lamp power	58 W
Inrush current at mains	8.2
Max. lamp no. on MCB B type 10A – Mains	75
Max. lamp no. on MCB B type 10A – EM ballast without Comp. Cap.	75

MASTER Value LEDtube T8

Max. lamp no. on MCB B type 10A — EM ballast with Comp. Cap.	10
Max. lamp no. on MCB B type 16A — Mains	120
Max. lamp no. on MCB B type 16A — EM ballast without Comp. Cap.	120
Max. lamp no. on MCB B type 16A — EM ballast with Comp. Cap.	16
Ballast Compatibility	EM/Mains

Temperature

Ambient temperature range	-20°C to 45°C
T-Case maximum (nom.)	65 °C

Controls and Dimming

Dimmable	No
----------	----

Mechanical and Housing

Lamp Finish	Frosted
Bulb material	Glass
Product length	1,500 mm
Bulb shape	T8

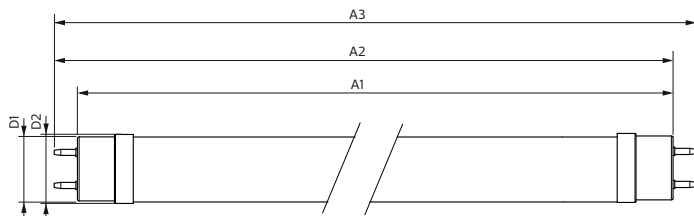
Approval and Application

Energy Efficiency Class	D
Energy-saving product	Yes
Approval marks	RoHS compliance TUV CE marking KEMA Keur certificate
Energy consumption kWh/1,000 hours	21 kWh
EPREL registration number	1095870

Product Data

Order product name	MAS LEDtube VLE 1500mm HO 20.5W 865 T8
Full product name	MASTER LEDtube VLE 1500mm HO 20.5W 865 T8
Full EOC	871869964695000
Order code	64695000
Material no. (12 NC)	929002021902
SAP numerator – quantity per pack	1
EAN/UPC – Product/Case	8718699646950
Numerator – packs per outer box	10
EAN/UPC - Case	8718699646967

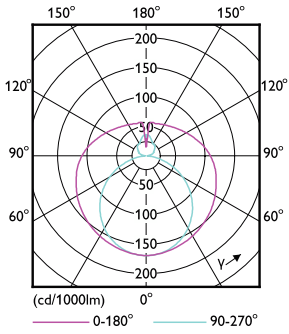
Dimensional drawing



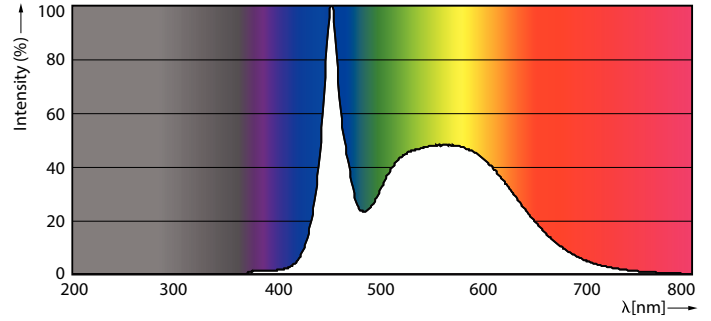
Product	D1	D2	A1	A2	A3
MAS LEDtube VLE 1500mm HO	25.8 mm	28 mm	1,498.7 mm	1,505.8 mm	1,512.9 mm
20.5W 865 T8					

MASTER Value LEDtube T8

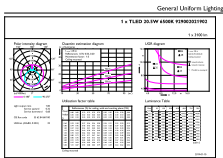
Photometric data



Light Distribution Diagram - MAS LEDtube VLE 1500mm HO 20.5W 865 T8



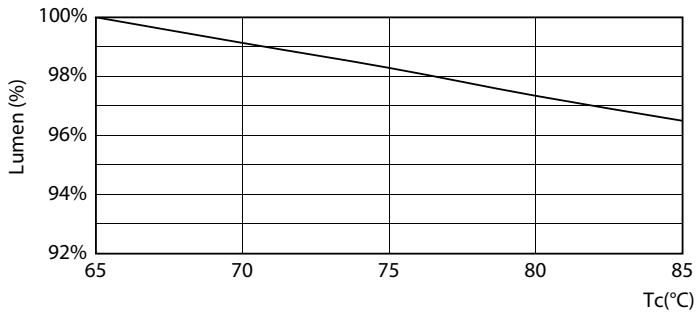
Spectral Power Distribution Colour - MAS LEDtube VLE 1500mm HO 20.5W 865 T8



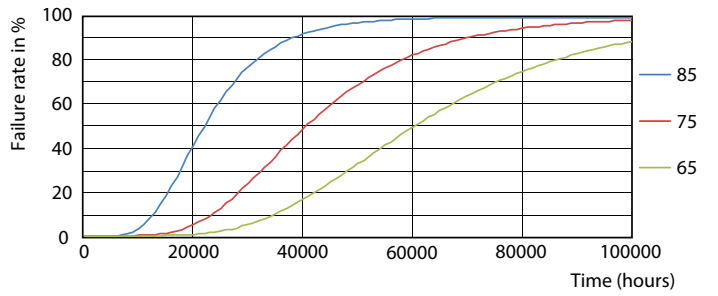
General uniform lighting - MAS LEDtube VLE 1500mm HO 20.5W 865 T8

General uniform lighting - MAS LEDtube VLE 1500mm HO 20.5W 865 T8

Lifetime



Lumen Maintenance Diagram - MAS LEDtube VLE 1500mm HO 20.5W 865 T8



Life Expectancy Diagram - MAS LEDtube VLE 1500mm HO 20.5W 865 T8

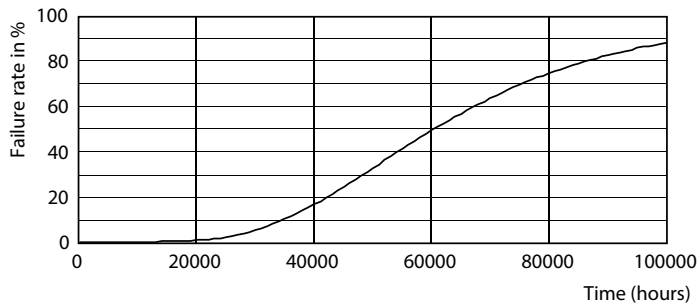
MASTER Value LEDtube T8

Lifetime



Life Expectancy Diagram - MAS LEDtube VLE 1500mm HO 20.5W 865 T8

Lumen Maintenance Diagram - MAS LEDtube VLE 1500mm HO 20.5W 865 T8



Life Expectancy Diagram - MAS LEDtube VLE 1500mm HO 20.5W 865 T8

