



# Master Value LEDtube T8

## MASTER LEDtube VLE 1500mm UO 24W 865 T8

A high-performance LED solution, the professional Master Value LED tube is ideal for replacing T8 fluorescent lamps using EM ballast or installing directly on the mains. This product provides a uniform lighting effect for use in all general lighting, as well as instant energy-efficiency, making for an environmentally friendly solution.

### Product data

| General Information     |                                  |
|-------------------------|----------------------------------|
| Cap base                | G13 [ Medium Bi-Pin Fluorescent] |
| Nominal lifetime (nom.) | 50000 h                          |
| Switching cycle         | 200000X                          |

| Light Technical                        |                       |
|--|-----------------------|
| Colour code                            | 865 [ CCT of 6,500 K] |
| Beam Angle (Nom)                       | 240 °                 |
| Luminous flux (nom.)                   | 3700 lm               |
| Correlated colour temperature (nom.)   | 6500 K                |
| Colour consistency                     | <6                    |
| Color rendering index (nom.)           | 83                    |
| LLMF at end of nominal lifetime (nom.) | 70 %                  |

| Operating and Electrical |             |
|--------------------------|-------------|
| Input frequency          | 50 to 60 Hz |
| Power (Rated) (Nom)      | 24 W        |
| Lamp current (max.)      | 112 mA      |
| Lamp current (min.)      | 103 mA      |
| Starting time (nom.)     | 0.5 s       |

|                                  |           |
|----------------------------------|-----------|
| Warm-up time to 60% light (nom.) | 0.5 s     |
| Power factor (nom.)              | 0.9       |
| Voltage (Nom)                    | 220-240 V |

| Temperature           |        |
|-----------------------|--------|
| T ambient (max.)      | 45 °C  |
| T ambient (min.)      | -20 °C |
| T storage (max.)      | 65 °C  |
| T storage (min.)      | -40 °C |
| T-Case maximum (nom.) | 60 °C  |

| Controls and Dimming |    |
|----------------------|----|
| Dimmable             | No |

| Mechanical and Housing |         |
|------------------------|---------|
| Bulb material          | Glass   |
| Product length         | 1500 mm |

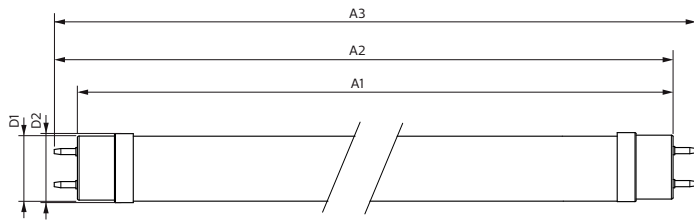
| Approval and Application      |     |
|-------------------------------|-----|
| Energy efficiency label (EEL) | A++ |

# Master Value LEDtube T8

|                               |  |
|-------------------------------|--|
| Energy-saving product         | Yes  |
| Approval marks                | RoHS compliance CE marking KEMA Keur certificate |
| Energy Consumption kWh/1000 h | 24 kWh   |
| <b>Product Data</b>           |  |
| Full product code             | 871869964707000                                  |
| Order product name            | MASTER LEDtube VLE 1500mm UO 24W 865 T8          |

|                                 |               |
|---------------------------------|---------------|
| EAN/UPC – product               | 8718699647070 |
| Order code                      | 64707000      |
| Numerator – quantity per pack   | 1             |
| Numerator – packs per outer box | 10            |
| Material no. (12NC)             | 929002022502  |
| Net weight (piece)              | 0.270 kg      |

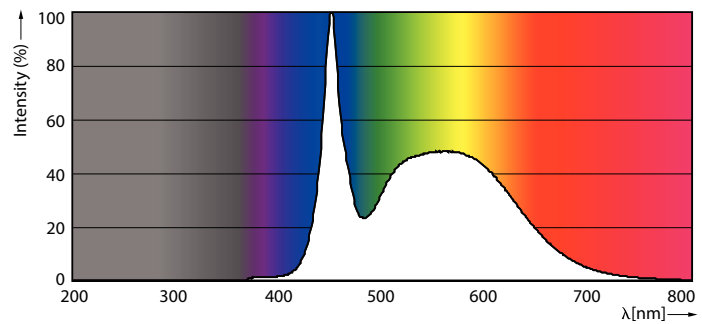
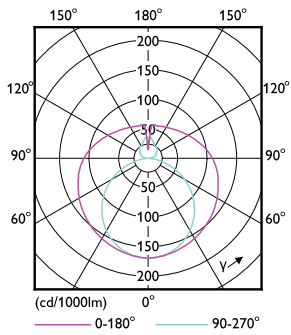
## Dimensional drawing



| Product                                    | D1      | D2    | A1        | A2        | A3        |
|--|---------|-------|-----------|-----------|-----------|
| MASTER LEDtube VLE<br>1500mm UO 24W 865 T8 | 25.8 mm | 28 mm | 1498.7 mm | 1505.8 mm | 1512.9 mm |

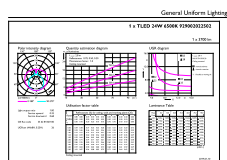
## TLED 5ft 220-240V 24-58W 3700lm6500K G13

## Photometric data



## LEDtube 220-240V G13

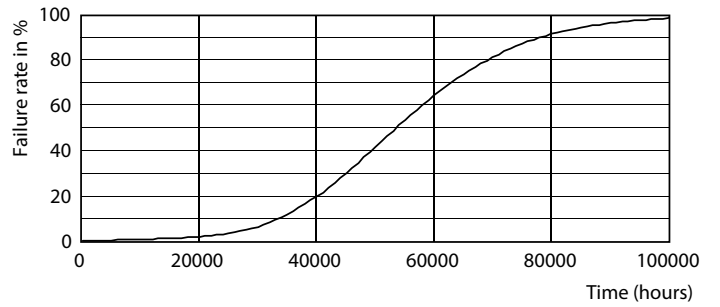
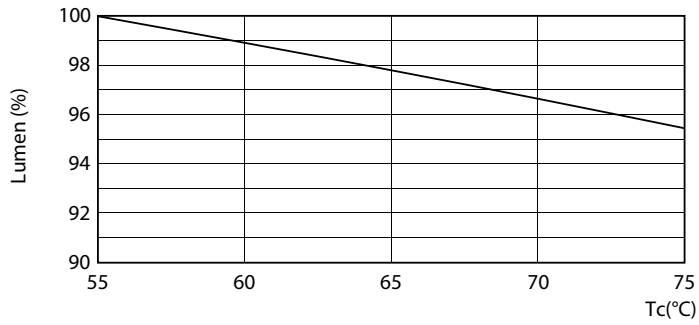
## LEDtube 220-240V G13 6500k



## LEDtube 220-240V G13 5ft 3700lm 6500k

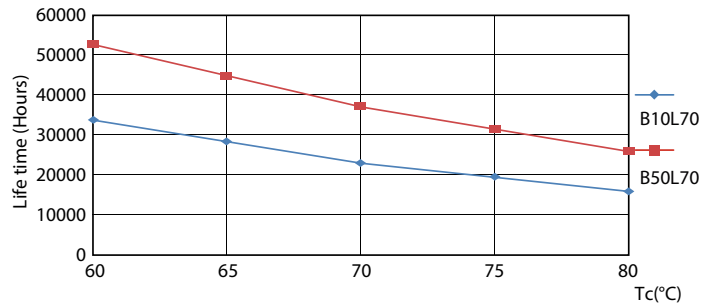
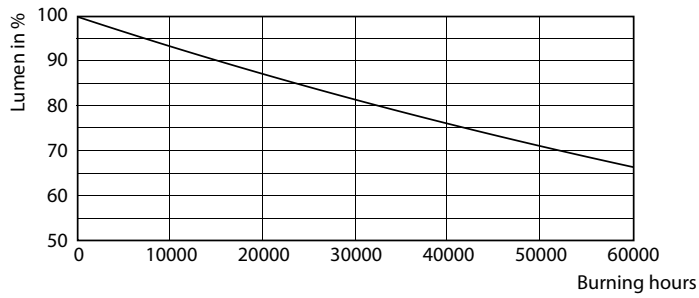
# Master Value LEDtube T8

## Lifetime



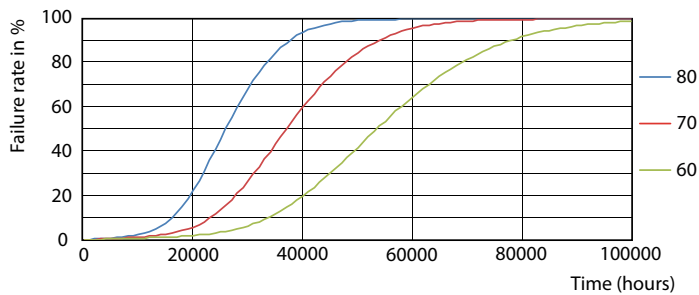
LEDtube 220-240V G13 LumenVsTc

LEDtube 220-240V G13



LEDtube 220-240V G13

LEDtube 220-240V G13 LifetimeVsTc



LEDtube 220-240V G13 FailureRate

## Master Value LEDtube T8

