

T8

9.9T8/COR/48-840/MF16/G 10/1

Our TLEDs are available in InstantFit (Type A / Type C) or MainsFit (Ballast bypass / Type B) versions. The InstantFit lamps work on a broad variety of ballasts and LED drivers. Only InstantFit has over 15,000 lamp & ballast combinations delivering even light output, energy savings and a long lifetime. Our MainsFit products feature a double-ended design, simplifying installation while a proprietary safety circuit minimizes a shock risk. Lamp sizes range from 2-foot to 8-foot and U-bend with a variety of lumen outputs.

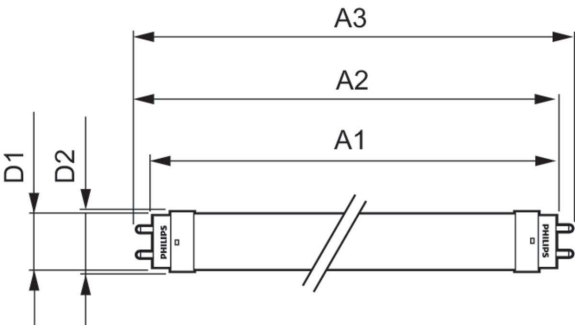
Product data

General Information			
Cap-Base	G13 [Medium Bi-Pin Fluorescent]	Input Frequency	50 to 60 Hz
Nominal lifetime	50,000 hour(s)	Power Consumption	9.9 W
Switching Cycle	50,000	Lamp Current (Max)	100 mA
Lighting Technology	LED	Lamp Current (Min)	43 mA
EU RoHS compliant	Yes	Wattage Equivalent	32 W
Light Technical		Starting Time (Nom)	0.5 s
Color Code	840 [CCT of 4000K]	Warm-up time to 60% light	0.5 s
Beam Angle (Nom)	240 degree(s)	Power Factor (Fraction)	0.9
Luminous Flux	1,650 lm	Voltage (Nom)	120-277 V
Color Designation	Cool White (CW)	UL Type	Type B - bypass the ballast
Correlated Color Temperature (Nom)	4000 K	Temperature	
Luminous Efficacy (rated) (Nom)	166.00 lm/W	Ambient temperature range	-20 °C to 45 °C
Color Consistency	<6	T-Case Maximum (Nom)	70 °C
Color rendering index (CRI)	80	Controls and Dimming	
LLMF At End Of Nominal Lifetime (Nom)	70 %	Dimmable	No
Operating and Electrical		Mechanical and Housing	
Line Frequency	50 to 60 Hz	Bulb Finish	Frosted

Bulb Material	Glass
Product Length	1,200 mm
Bulb Shape	T8
Approval and Application	
Energy Saving Product	Yes
Approval Marks	RoHS compliance UL certificate
Energy Consumption kWh/1000 h	- kWh
Product Data	
Order product name	9.9T8/COR/48-840/MF16/G 10/1

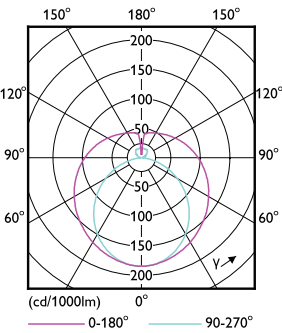
Full product name	9.9T8/COR/48-840/MF16/G 10/1
Order code	557439
Material Nr. (12NC)	929002326004
Numerator - Quantity Per Pack	1
EAN/UPC - Product/Case	046677557430
Numerator - Packs per outer box	10
EAN/UPC - Case	50046677557435

Dimensional drawing

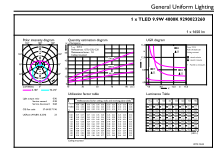


Product	D1	D2	A1	A2	A3
9.9T8/COR/48-840/MF16/G 10/1	25.7 mm	28 mm	1,198 mm	1,205 mm	1,212 mm

Photometric data

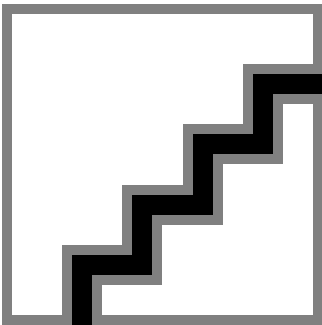


Light Distribution Diagram - 9.9T8/COR/48-840/MF16/G 10/1



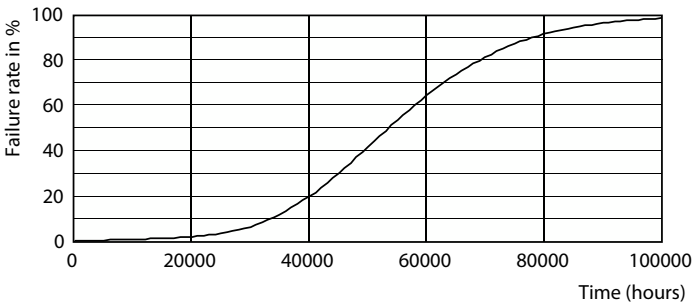
General uniform lighting - 9.9T8/COR/48-840/MF16/G 10/1

Photometric data

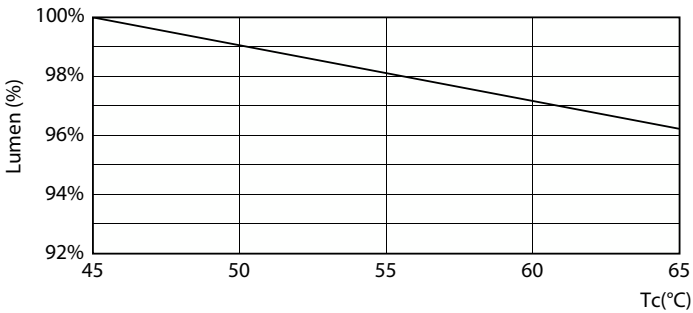


Spectral Power Distribution Colour - 9.9T8/COR/48-840/MF16/G 10/1

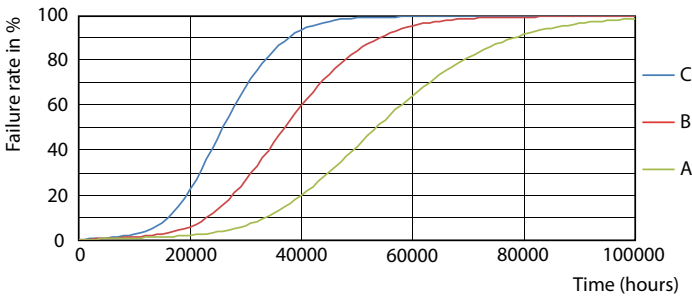
Lifetime



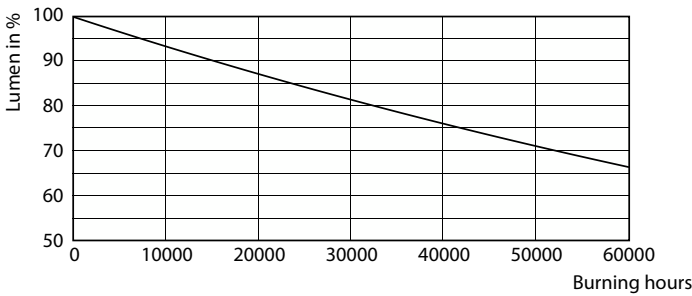
Life Expectancy Diagram - 9.9T8/COR/48-840/MF16/G 10/1



Lumen Maintenance Diagram - 9.9T8/COR/48-840/MF16/G 10/1

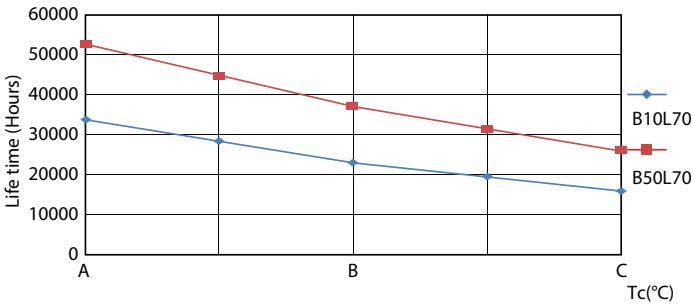


Life Expectancy Diagram - 9.9T8/COR/48-840/MF16/G 10/1



Lumen Maintenance Diagram - 9.9T8/COR/48-840/MF16/G 10/1

Lifetime



Life Expectancy Diagram - 9.9T8/COR/48-840/MF16/G 10/1

