

T8

9.9T8/COR/48-850/MF16/G 10/1

Our TLEDs are available in InstantFit (Type A / Type C) or MainsFit (Ballast bypass / Type B) versions. The InstantFit lamps work on a broad variety of ballasts and LED drivers. Only InstantFit has over 15,000 lamp & ballast combinations delivering even light output, energy savings and a long lifetime. Our MainsFit products feature a double-ended design, simplifying installation while a proprietary safety circuit minimizes a shock risk. Lamp sizes range from 2-foot to 8-foot and U-bend with a variety of lumen outputs.

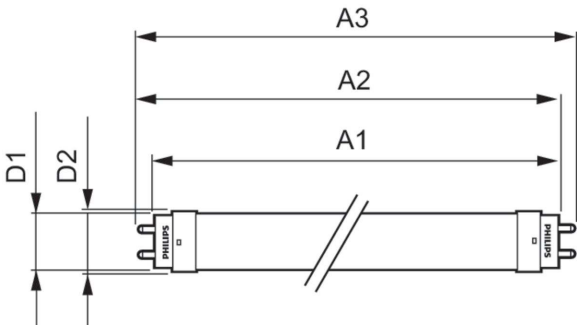
Product data

General Information		Input Frequency	
Cap-Base	G13 [Medium Bi-Pin Fluorescent]	Power Consumption	9.9 W
Nominal lifetime	50,000 hour(s)	Lamp Current (Max)	100 mA
Switching Cycle	50,000	Lamp Current (Min)	43 mA
Lighting Technology	LED	Wattage Equivalent	32 W
EU RoHS compliant	Yes	Starting Time (Nom)	0.5 s
Light Technical		Warm-up time to 60% light	0.5 s
Color Code	850 [CCT of 5000K]	Power Factor (Fraction)	0.9
Beam Angle (Nom)	240 degree(s)	Voltage (Nom)	120-277 V
Luminous Flux	1,650 lm	UL Type	Type B - bypass the ballast
Color Designation	Daylight	Temperature	
Correlated Color Temperature (Nom)	5000 K	Ambient temperature range	-4 °F to 113 °F
Luminous Efficacy (rated) (Nom)	166.00 lm/W	T-Case Maximum (Nom)	158 °F
Color Consistency	<5	Controls and Dimming	
Color rendering index (CRI)	80	Dimmable	No
LLMF At End Of Nominal Lifetime (Nom)	70 %	Mechanical and Housing	
Operating and Electrical		Bulb Finish	Frosted
Line Frequency	50 to 60 Hz		

Bulb Material	Glass
Product Length	47-1/4 inch
Bulb Shape	T8
Approval and Application	
Energy Saving Product	Yes
Approval Marks	RoHS compliance UL certificate
Energy Consumption kWh/1000 h	- kWh
Product Data	
Order product name	9.9T8/COR/48-850/MF16/G 10/1

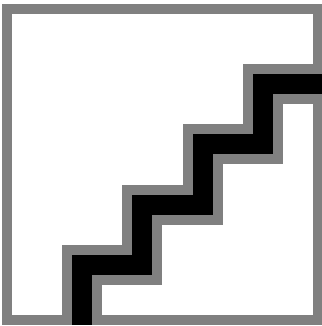
Full product name	9.9T8/COR/48-850/MF16/G 10/1
Order code	557447
Material Nr. (12NC)	929002326104
Numerator - Quantity Per Pack	1
EAN/UPC - Product/Case	046677557447
Numerator - Packs per outer box	10
EAN/UPC - Case	50046677557442

Dimensional drawing

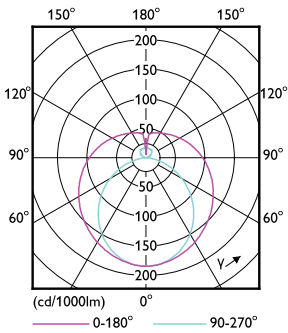


Product	D1	D2	A1	A2	A3
9.9T8/COR/48-850/ MF16/G 10/1	1-1/16 inch	1-1/8 inch	47-3/16 inch	47-1/2 inch	47-3/4 inch

Photometric data

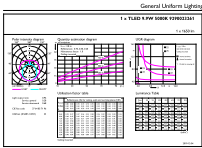


Spectral Power Distribution Colour - 9.9T8/COR/48-850/MF16/G 10/1



Light Distribution Diagram - 9.9T8/COR/48-850/MF16/G 10/1

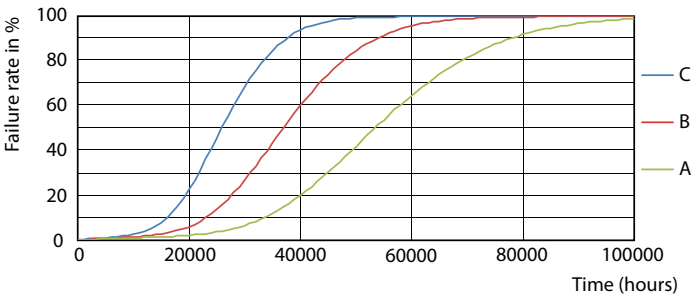
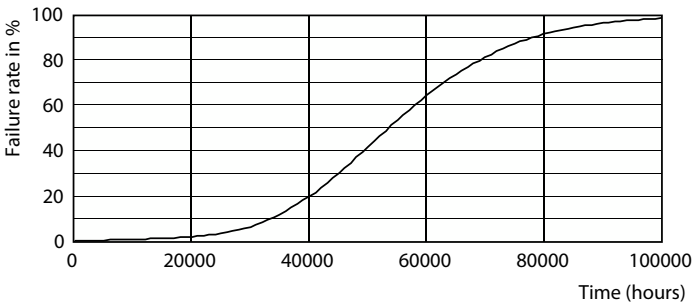
Photometric data



General uniform lighting - 9.9T8/COR/48-850/MF16/G 10/1

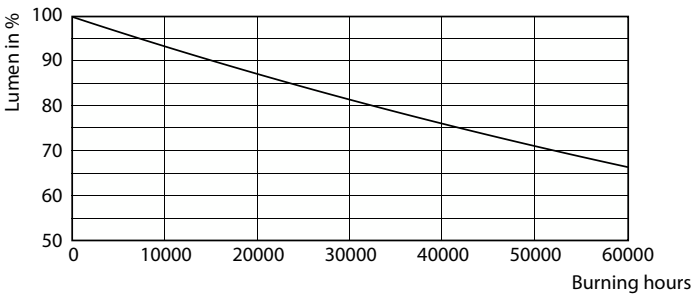
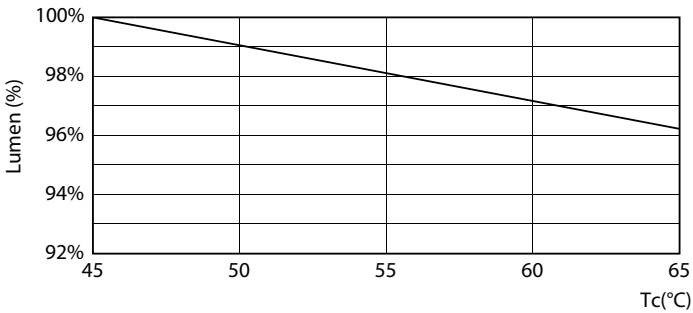
General uniform lighting - 9.9T8/COR/48-850/MF16/G 10/1

Lifetime



Life Expectancy Diagram - 9.9T8/COR/48-850/MF16/G 10/1

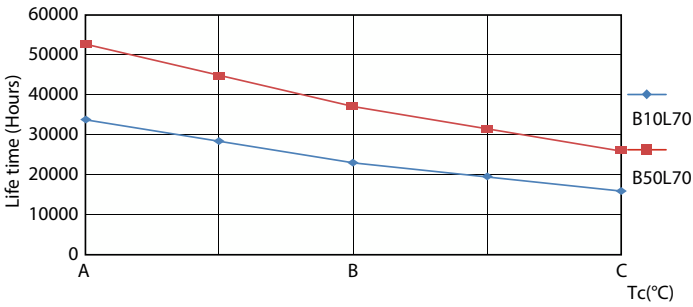
Life Expectancy Diagram - 9.9T8/COR/48-850/MF16/G 10/1



Lumen Maintenance Diagram - 9.9T8/COR/48-850/MF16/G 10/1

Lumen Maintenance Diagram - 9.9T8/COR/48-850/MF16/G 10/1

Lifetime



Life Expectancy Diagram - 9.9T8/COR/48-850/MF16/G 10/1

