

# MASTER LEDtube EM/ Mains T8



## MAS LEDtube DC72-110V 1200mm 18W 840 T8

The Philips MASTER LEDtube integrates a LED light source into a traditional fluorescent form factor. Its unique design creates a perfectly uniform visual appearance, which cannot be distinguished from traditional fluorescent. These T8 LED tubes are the right choice for absolute performance and are designed to stand up to everyday conditions. Unparalleled savings thanks to low energy consumption and an exceptionally long lifetime ensure this tube masters every demanding application.

### Warnings and Safety

- NOTE: The overall energy efficiency and light distribution of any installation that uses these lamps will be determined by the design of the installation.

### Product data

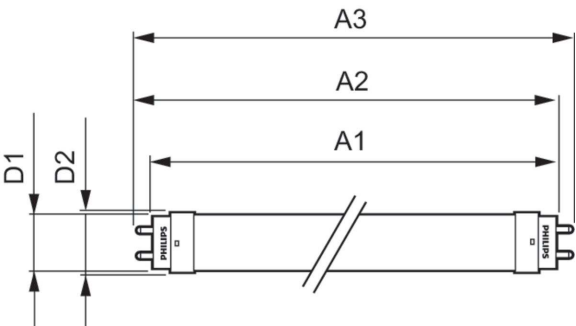
General Information		Luminous Efficacy (rated) (Nom)	
Cap-Base	G13 [Medium Bi-Pin Fluorescent]	150.00 lm/W	
Nominal lifetime	50,000 hour(s)	Color Consistency	<6
Switching Cycle	50,000	Color rendering index (CRI)	80
Lighting Technology	LED	LLMF At End Of Nominal Lifetime (Nom) 70 %	
Flux measurement reference	Sphere	Operating and Electrical	
EU RoHS compliant	Yes	Line Frequency	- Hz
Light Technical		Input Frequency	- Hz
Color Code	840 [CCT of 4000K]	Power Consumption	18 W
Beam Angle (Nom)	240 degree(s)	Lamp Current (Max)	250 mA
Luminous Flux	2,700 lm	Lamp Current (Min)	163 mA
Color Designation	Cool White (CW)	Starting Time (Nom)	0.5 s
Correlated Color Temperature (Nom)	4000 K	Warm-up time to 60% light	0.5 s
		Power Factor (Fraction)	0.9

MASTER LEDtube EM/Mains T8

Voltage (Nom)	72-110 V
Temperature	
Ambient temperature range	-20 °C to 45 °C
T-Case Maximum (Nom)	55 °C
Controls and Dimming	
Dimmable	No
Mechanical and Housing	
Bulb Finish	Frosted
Bulb Material	Glass
Product Length	1,200 mm
Bulb Shape	T8
Approval and Application	
Energy Efficiency Class	D
Energy Saving Product	Yes

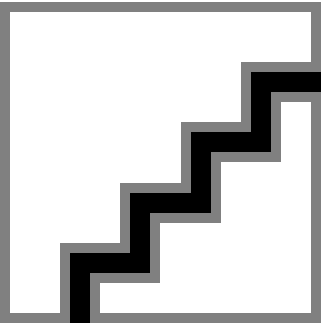
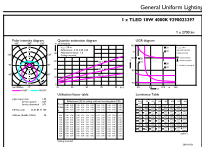
Approval Marks	RoHS compliance CE marking KEMA Keur certificate
Energy Consumption kWh/1000 h	18 kWh
EPREL Registration Number	491848
Product Data	
Order product name	MAS LEDtube DC72-110V 1200mm 18W 840 T8
Full product name	MAS LEDtube DC72-110V 1200mm 18W 840 T8
Full product code	871869973686600
Order code	929002329702
Material Nr. (12NC)	929002329702
Numerator - Quantity Per Pack	1
EAN/UPC - Product/Case	8718699736866
Numerator - Packs per outer box	20
EAN/UPC - Case	8718699736866

Dimensional drawing



Product	D1	D2	A1	A2	A3
MAS LEDtube DC72-110V 1200mm 18W 840 T8	25.7 mm	28 mm	1,198 mm	1,205 mm	1,212 mm

Photometric data

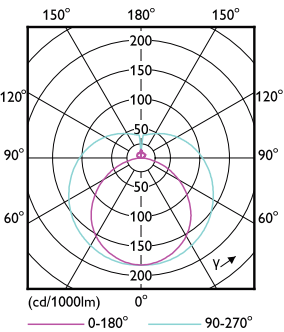


General uniform lighting - MAS LEDtube DC72-110V 1200mm 18W 840 T8

Spectral Power Distribution Colour - MAS LEDtube DC72-110V 1200mm 18W 840 T8

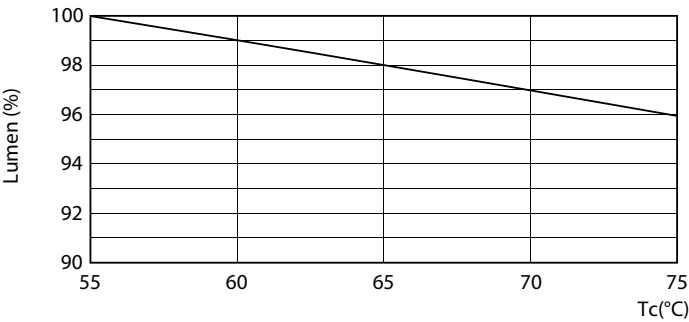
MASTER LEDtube EM/Mains T8

Photometric data

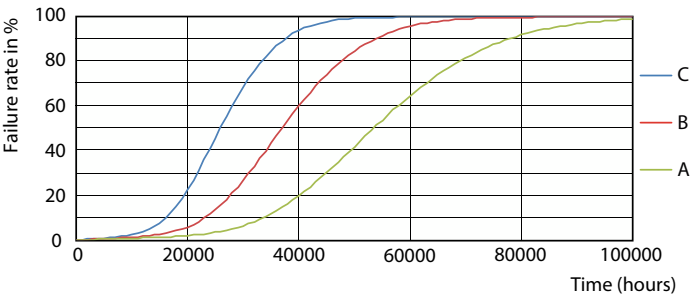


Light Distribution Diagram - MAS LEDtube DC72-110V 1200mm 18W 840 T8

Lifetime

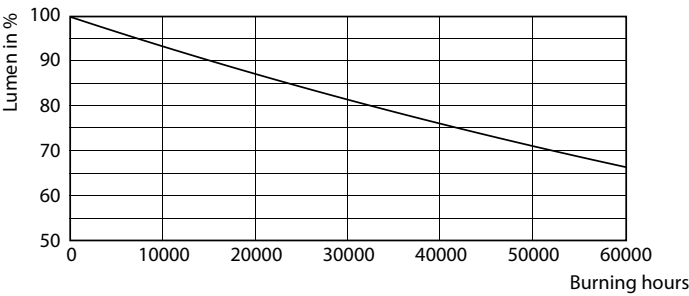


Life Expectancy Diagram - MAS LEDtube DC72-110V 1200mm 18W 840 T8



Life Expectancy Diagram - MAS LEDtube DC72-110V 1200mm 18W 840 T8

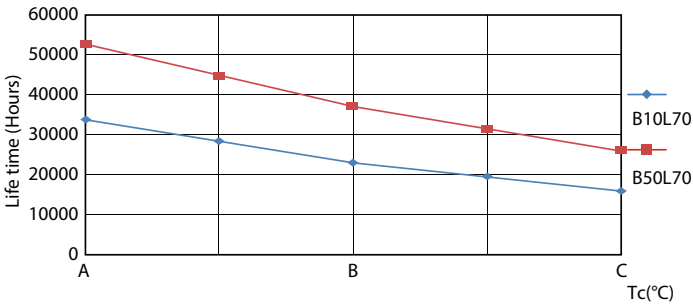
Lumen Maintenance Diagram - MAS LEDtube DC72-110V 1200mm 18W 840 T8



Lumen Maintenance Diagram - MAS LEDtube DC72-110V 1200mm 18W 840 T8

MASTER LEDtube EM/Mains T8

Lifetime



Life Expectancy Diagram - MAS LEDtube DC72-110V 1200mm 18W 840 T8

