

# T8

## 12.5T8/COR/48-835/MF17/G 10/1

Our TLEDs are available in InstantFit (Type A / Type C) or MainsFit (Ballast bypass / Type B) versions. The InstantFit lamps work on a broad variety of ballasts and LED drivers. Only InstantFit has over 15,000 lamp & ballast combinations delivering even light output, energy savings and a long lifetime. Our MainsFit products feature a double-ended design, simplifying installation while a proprietary safety circuit minimizes a shock risk. Lamp sizes range from 2-foot to 8-foot and U-bend with a variety of lumen outputs.

### Product data

General Information			
Cap-Base	G13 [Medium Bi-Pin Fluorescent]	Input Frequency	50 to 60 Hz
Nominal lifetime	50,000 hour(s)	Power Consumption	12.5 W
Switching Cycle	50,000	Lamp Current (Max)	105 mA
Lighting Technology	LED	Lamp Current (Min)	45 mA
EU RoHS compliant	Yes	Wattage Equivalent	32 W
Light Technical		Starting Time (Nom)	0.5 s
Color Code	835 [CCT of 3500K]	Warm-up time to 60% light	0.5 s
Beam Angle (Nom)	240 degree(s)	Power Factor (Fraction)	0.9
Luminous Flux	1,700 lm	Voltage (Nom)	120-277 V
Color Designation	White (WH)	UL Type	Type B - bypass the ballast
Correlated Color Temperature (Nom)	3500 K	Temperature	
Luminous Efficacy (rated) (Nom)	136.00 lm/W	Ambient temperature range	-20 °C to 45 °C
Color Consistency	<6	T-Case Maximum (Nom)	60 °C
Color rendering index (CRI)	82	Controls and Dimming	
LLMF At End Of Nominal Lifetime (Nom)	70 %	Dimmable	No
Operating and Electrical		Mechanical and Housing	
Line Frequency	50 to 60 Hz	Bulb Finish	Frosted

Bulb Material	Glass
Product Length	1,200 mm
Bulb Shape	T8

Approval and Application

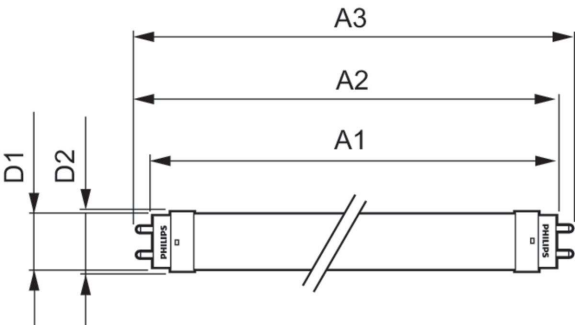
Energy Saving Product	Yes
Approval Marks	RoHS compliance UL certificate DLC compliance
Energy Consumption kWh/1000 h	- kWh

Product Data

Order product name	12.5T8/COR/48-835/MF17/G 10/1
--------------------	-------------------------------

Full product name	12.5T8/COR/48-835/MF17/G 10/1
Order code	929002394504
Material Nr. (12NC)	929002394504
Numerator - Quantity Per Pack	1
EAN/UPC - Product/Case	046677477325
Numerator - Packs per outer box	10
EAN/UPC - Case	50046677477320

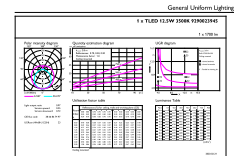
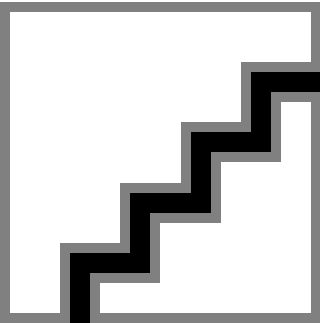
Dimensional drawing



Product

12.5T8/COR/48-835/MF17/G 10/1
-------------------------------

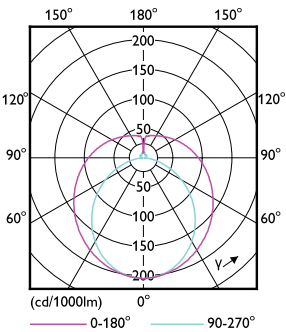
Photometric data



Spectral Power Distribution Colour - 12.5T8/COR/48-835/MF17/G 10/1

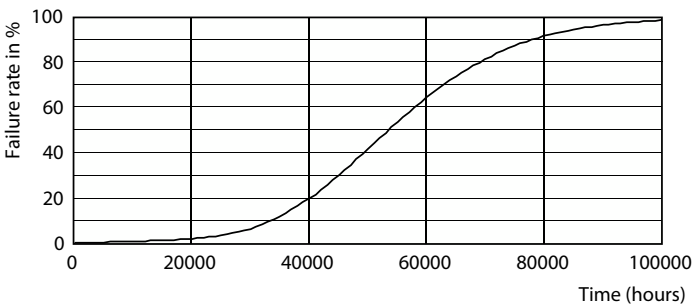
General uniform lighting - 12.5T8/COR/48-835/MF17/G 10/1

Photometric data

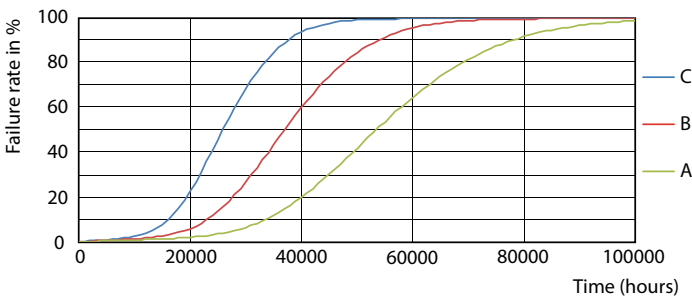


Light Distribution Diagram - 12.5T8/COR/48-835/MF17/G 10/1

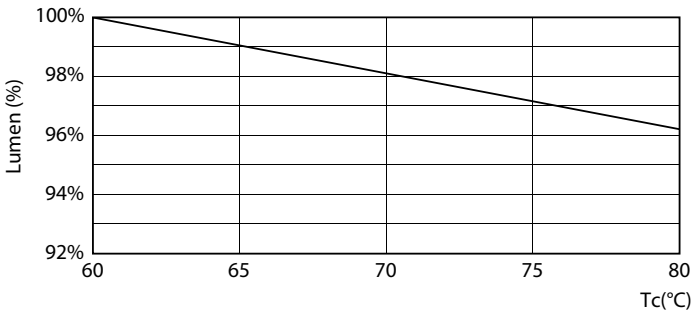
Lifetime



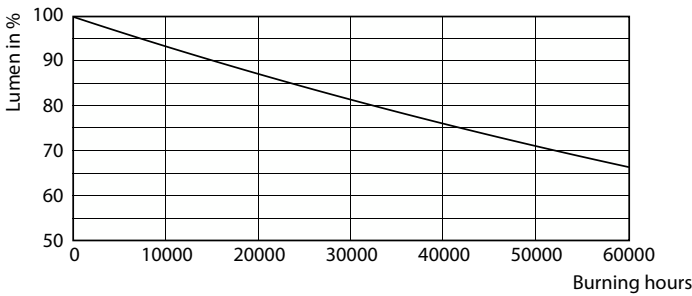
Life Expectancy Diagram - 12.5T8/COR/48-835/MF17/G 10/1



Life Expectancy Diagram - 12.5T8/COR/48-835/MF17/G 10/1

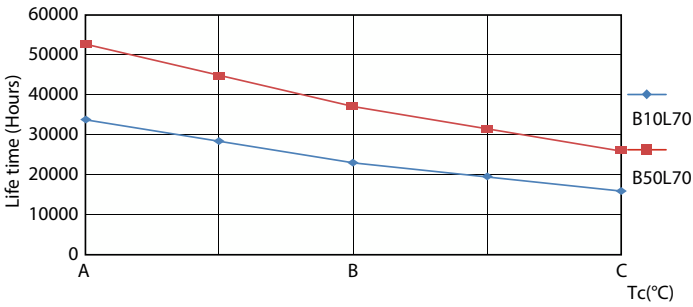


Lumen Maintenance Diagram - 12.5T8/COR/48-835/MF17/G 10/1



Lumen Maintenance Diagram - 12.5T8/COR/48-835/MF17/G 10/1

Lifetime



Life Expectancy Diagram - 12.5T8/COR/48-835/MF17/G 10/1

