

MASTER LEDtube Mains T5

MAS LEDtube 600mm HE 8W 840 T5

The new Philips Master LEDtube Mains T5 brings simplicity to your lighting project. You don't need to pay attention to the driver technology anymore. Thanks to a unique design, Philips MASTER LEDtube Mains T5 installs in luminaires operating on mains power connection. So simple to operate! . Perfectly safe, reliable & easy to install Philips MASTER LEDtube Mains T5 is the ideal alternative to standard fluorescent tubes to maximize value over lifetime with high energy saving and lower maintenance costs.

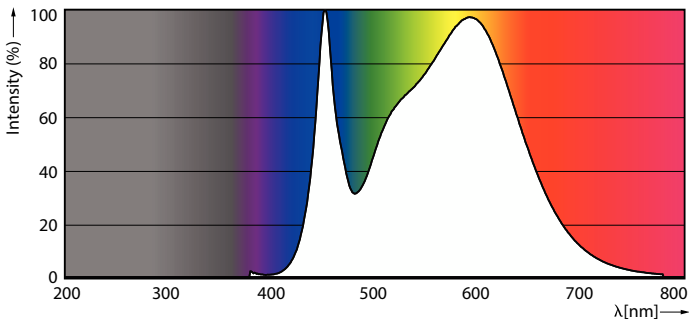
Product data

General Information	
Cap-Base	G5
Nominal lifetime	50,000 hour(s)
Switching Cycle	200,000
Lighting Technology	LED
EU RoHS compliant	Yes
Light Technical	
Color Code	840 [CCT of 4000K]
Beam Angle (Nom)	200 degree(s)
Luminous Flux	1,050 lm
Color Designation	Cool White (CW)
Correlated Color Temperature (Nom)	4000 K
Luminous Efficacy (rated) (Nom)	131.00 lm/W
Color Consistency	<6
Color rendering index (CRI)	80
LLMF At End Of Nominal Lifetime (Nom)	70 %

Operating and Electrical	
Line Frequency	50 to 60 Hz
Input Frequency	50 to 60 Hz
Power Consumption	8 W
Lamp Current (Max)	90 mA
Lamp Current (Min)	35 mA
Starting Time (Nom)	0.5 s
Warm-up time to 60% light	0.5 s
Power Factor (Fraction)	0.9
Voltage (Nom)	100-240 V
Temperature	
Ambient temperature range	-20 °C to 45 °C
T-Case Maximum (Nom)	60 °C
Controls and Dimming	
Dimmable	No

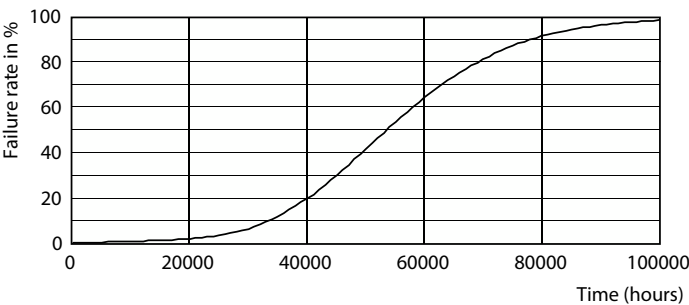
MASTER LEDtube Mains T5

Photometric data

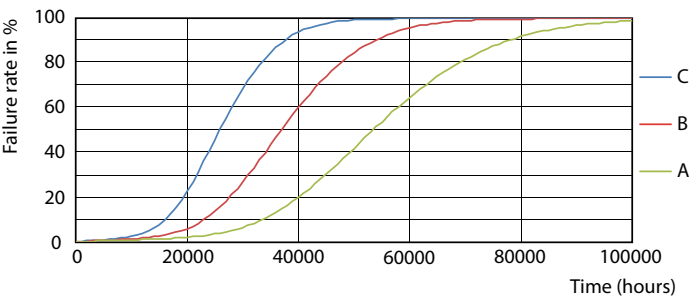


Spectral Power Distribution Colour - MAS LEDtube 600mm HE 8W 840 T5

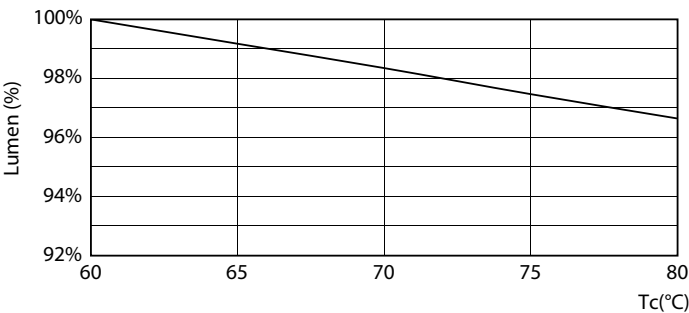
Lifetime



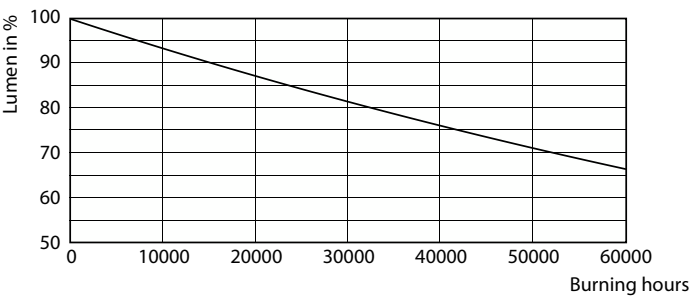
Life Expectancy Diagram - MAS LEDtube 600mm HE 8W 840 T5



Life Expectancy Diagram - MAS LEDtube 600mm HE 8W 840 T5



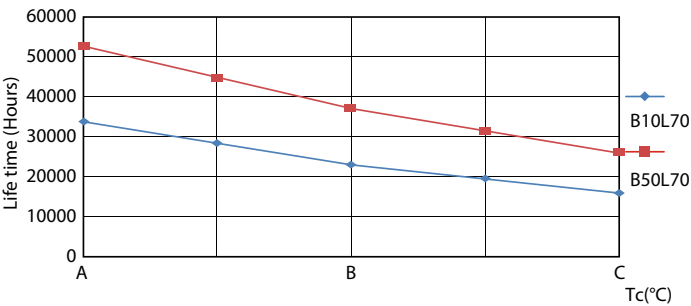
Lumen Maintenance Diagram - MAS LEDtube 600mm HE 8W 840 T5



Lumen Maintenance Diagram - MAS LEDtube 600mm HE 8W 840 T5

MASTER LEDtube Mains T5

Lifetime



Life Expectancy Diagram - MAS LEDtube 600mm HE 8W 840 T5

