

MASTER LEDtube Mains T5

MAS LEDtube 600mm HE 8W 865 T5

The new Philips Master LEDtube Mains T5 brings simplicity to your lighting project. You don't need to pay attention to the driver technology anymore. Thanks to a unique design, Philips MASTER LEDtube Mains T5 installs in luminaires operating on mains power connection. So simple to operate! . Perfectly safe, reliable & easy to install Philips MASTER LEDtube Mains T5 is the ideal alternative to standard fluorescent tubes to maximize value over lifetime with high energy saving and lower maintenance costs.

Product data

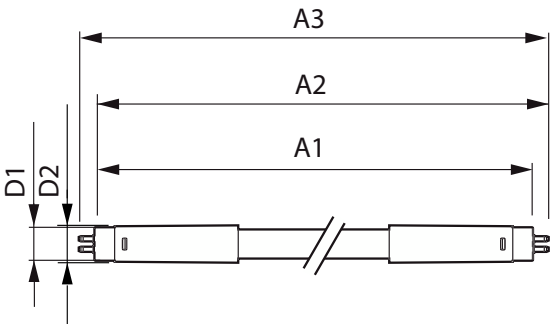
| General Information | |
|---------------------------------------|--------------------|
| Cap-Base | G5 |
| Nominal lifetime | 50,000 hour(s) |
| Switching Cycle | 200,000 |
| Lighting Technology | LED |
| EU RoHS compliant | Yes |
| Light Technical | |
| Color Code | 865 [CCT of 6500K] |
| Beam Angle (Nom) | 200 degree(s) |
| Luminous Flux | 1,050 lm |
| Color Designation | Cool Daylight |
| Correlated Color Temperature (Nom) | 6500 K |
| Luminous Efficacy (rated) (Nom) | 131.00 lm/W |
| Color Consistency | <6 |
| Color rendering index (CRI) | 80 |
| LLMF At End Of Nominal Lifetime (Nom) | 70 % |

| Operating and Electrical | |
|---------------------------|-----------------|
| Line Frequency | 50 to 60 Hz |
| Input Frequency | 50 to 60 Hz |
| Power Consumption | 8 W |
| Lamp Current (Max) | 90 mA |
| Lamp Current (Min) | 35 mA |
| Starting Time (Nom) | 0.5 s |
| Warm-up time to 60% light | 0.5 s |
| Power Factor (Fraction) | 0.9 |
| Voltage (Nom) | 100-240 V |
| Temperature | |
| Ambient temperature range | -20 °C to 45 °C |
| T-Case Maximum (Nom) | 60 °C |
| Controls and Dimming | |
| Dimmable | No |

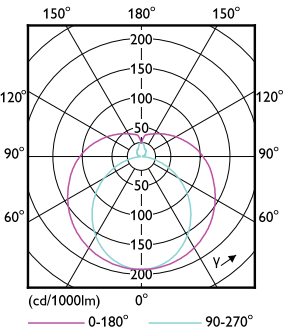
MASTER LEDtube Mains T5

| Mechanical and Housing | |
|-------------------------------|--|
| Bulb Finish | Frosted |
| Bulb Material | Glass |
| Product Length | 600 mm |
| Bulb Shape | T5 |
| Approval and Application | |
| Energy Saving Product | Yes |
| Approval Marks | RoHS compliance CE marking KEMA Keur certificate |
| Energy Consumption kWh/1000 h | 8 kWh |

Dimensional drawing



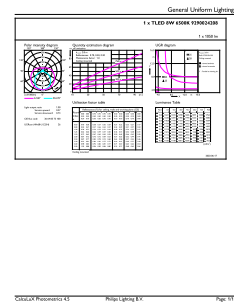
Photometric data



Light Distribution Diagram - MAS LEDtube 600mm HE 8W 865 T5

| Product Data | |
|---------------------------------|--------------------------------|
| Order product name | MAS LEDtube 600mm HE 8W 865 T5 |
| Full product name | MAS LEDtube 600mm HE 8W 865 T5 |
| Full product code | 871869978347100 |
| Order code | 929002420808 |
| Material Nr. (12NC) | 929002420808 |
| Numerator - Quantity Per Pack | 1 |
| EAN/UPC - Product/Case | 8718699783471 |
| Numerator - Packs per outer box | 10 |
| EAN/UPC - Case | 8718699783488 |

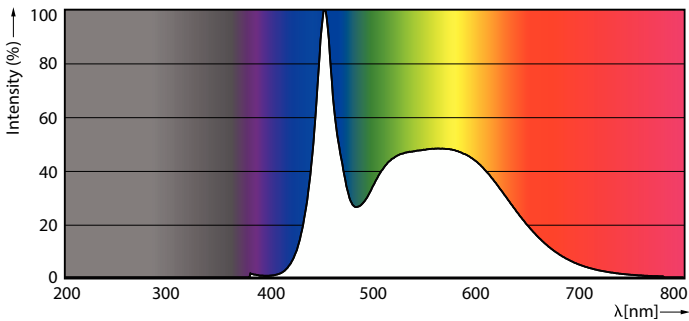
| Product | D1 | D2 | A1 | A2 | A3 |
|--------------------------------|---------|-------|--------|----------|----------|
| MAS LEDtube 600mm HE 8W 865 T5 | 15.8 mm | 19 mm | 549 mm | 556.1 mm | 563.2 mm |



General uniform lighting - MAS LEDtube 600mm HE 8W 865 T5

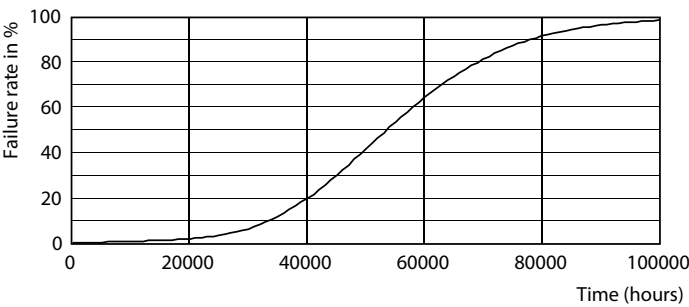
MASTER LEDtube Mains T5

Photometric data

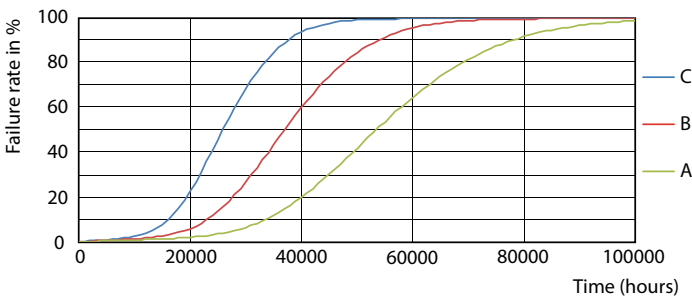


Spectral Power Distribution Colour - MAS LEDtube 600mm HE 8W 865 T5

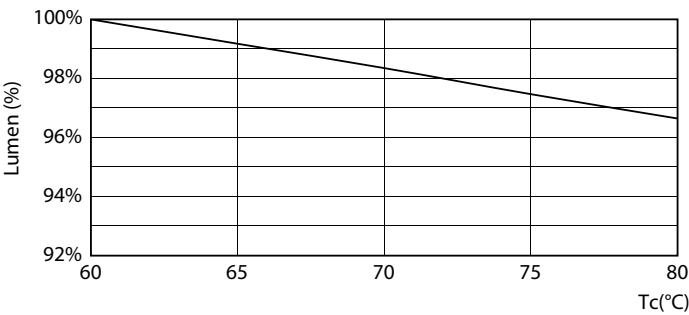
Lifetime



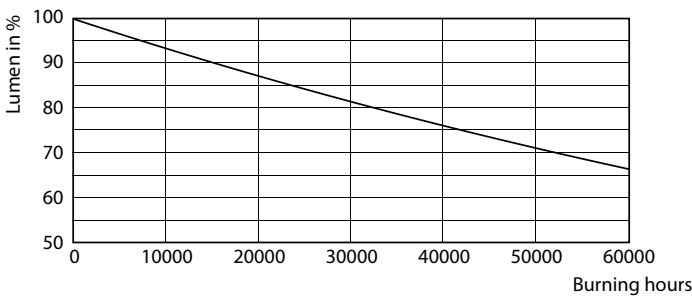
Life Expectancy Diagram - MAS LEDtube 600mm HE 8W 865 T5



Life Expectancy Diagram - MAS LEDtube 600mm HE 8W 865 T5



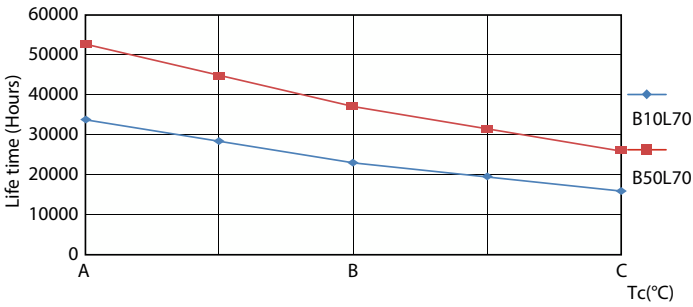
Lumen Maintenance Diagram - MAS LEDtube 600mm HE 8W 865 T5



Lumen Maintenance Diagram - MAS LEDtube 600mm HE 8W 865 T5

MASTER LEDtube Mains T5

Lifetime



Life Expectancy Diagram - MAS LEDtube 600mm HE 8W 865 T5

