

MASTER LEDtube Mains T5

MAS LEDtube 1200mm HE 16.5W 865 T5

The new Philips Master LEDtube Mains T5 brings simplicity to your lighting project. You don't need to pay attention to the driver technology anymore. Thanks to a unique design, Philips MASTER LEDtube Mains T5 installs in luminaires operating on mains power connection. So simple to operate! . Perfectly safe, reliable & easy to install Philips MASTER LEDtube Mains T5 is the ideal alternative to standard fluorescent tubes to maximize value over lifetime with high energy saving and lower maintenance costs.

Product data

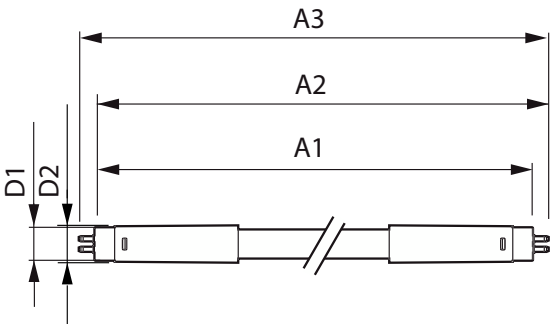
General Information	
Cap-Base	G5
Nominal lifetime	50,000 hour(s)
Switching Cycle	200,000
Lighting Technology	LED
EU RoHS compliant	Yes
Light Technical	
Color Code	865 [CCT of 6500K]
Beam Angle (Nom)	200 degree(s)
Luminous Flux	2,500 lm
Color Designation	Cool Daylight
Correlated Color Temperature (Nom)	6500 K
Luminous Efficacy (rated) (Nom)	151.00 lm/W
Color Consistency	<6
Color rendering index (CRI)	80
LLMF At End Of Nominal Lifetime (Nom)	70 %

Operating and Electrical	
Line Frequency	50 to 60 Hz
Input Frequency	50 to 60 Hz
Power Consumption	16.5 W
Lamp Current (Max)	180 mA
Lamp Current (Min)	70 mA
Starting Time (Nom)	0.5 s
Warm-up time to 60% light	0.5 s
Power Factor (Fraction)	0.9
Voltage (Nom)	100-240 V
Temperature	
Ambient temperature range	-20 °C to 45 °C
T-Case Maximum (Nom)	70 °C
Controls and Dimming	
Dimmable	No

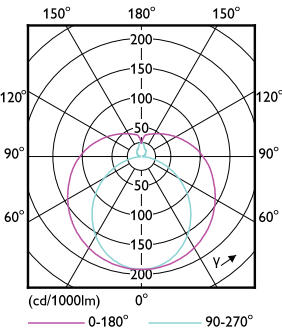
MASTER LEDtube Mains T5

Mechanical and Housing	
Bulb Finish	Frosted
Bulb Material	Glass
Product Length	1,200 mm
Bulb Shape	T5
Approval and Application	
Energy Saving Product	Yes
Approval Marks	RoHS compliance CE marking KEMA Keur certificate
Energy Consumption kWh/1000 h	17 kWh

Dimensional drawing



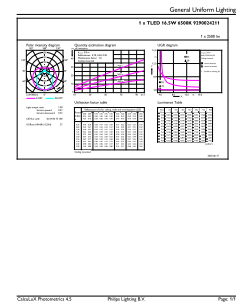
Photometric data



Light Distribution Diagram - MAS LEDtube 1200mm HE 16.5W 865 T5

Product Data	
Order product name	MAS LEDtube 1200mm HE 16.5W 865 T5
Full product name	MAS LEDtube 1200mm HE 16.5W 865 T5
Full product code	871869978353200
Order code	929002421108
Material Nr. (12NC)	929002421108
Numerator - Quantity Per Pack	1
EAN/UPC - Product/Case	8718699783532
Numerator - Packs per outer box	10
EAN/UPC - Case	8718699783549

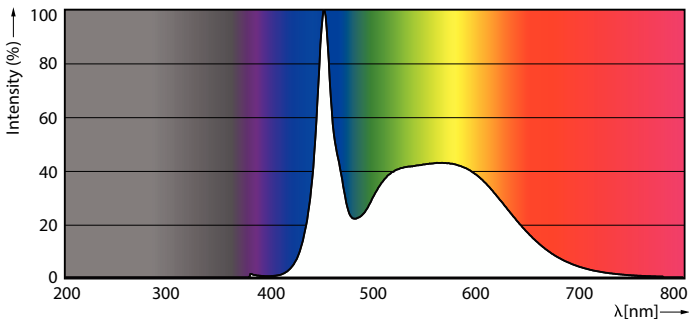
Product	D1	D2	A1	A2	A3
MAS LEDtube 1200mm HE 16.5W 865 T5	15.8 mm	19 mm	1,149 mm	1,156.1 mm	1,163.2 mm



General uniform lighting - MAS LEDtube 1200mm HE 16.5W 865 T5

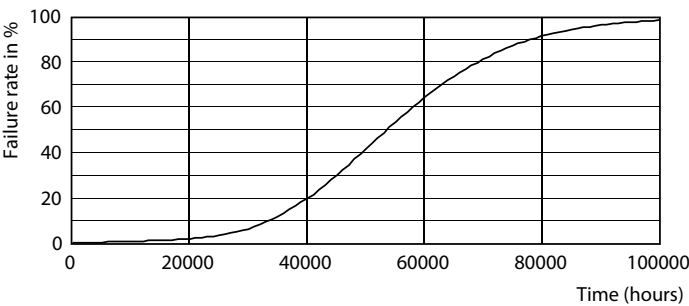
MASTER LEDtube Mains T5

Photometric data

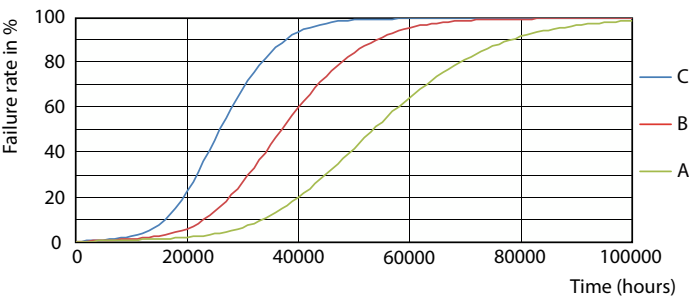


Spectral Power Distribution Colour - MAS LEDtube 1200mm HE 16.5W 865 T5

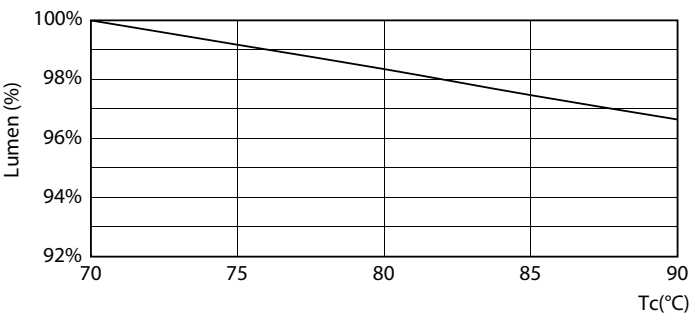
Lifetime



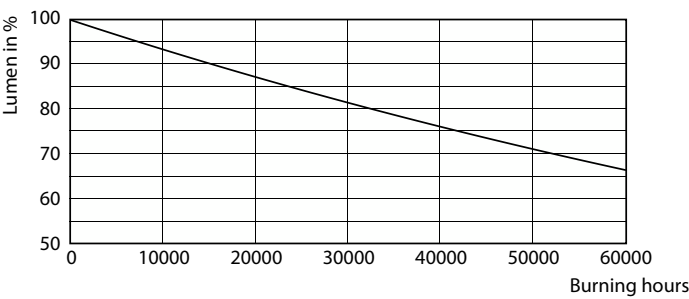
Life Expectancy Diagram - MAS LEDtube 1200mm HE 16.5W 865 T5



Life Expectancy Diagram - MAS LEDtube 1200mm HE 16.5W 865 T5



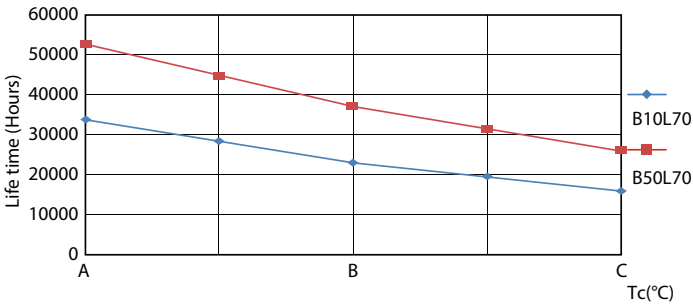
Lumen Maintenance Diagram - MAS LEDtube 1200mm HE 16.5W 865 T5



Lumen Maintenance Diagram - MAS LEDtube 1200mm HE 16.5W 865 T5

MASTER LEDtube Mains T5

Lifetime



Life Expectancy Diagram - MAS LEDtube 1200mm HE 16.5W 865 T5

