

MASTER LEDtube Mains T5



MAS LEDtube 1500mm HE 20W 865 T5

The new Philips Master LEDtube Mains T5 brings simplicity to your lighting project. You don't need to pay attention to the driver technology anymore. Thanks to a unique design, Philips MASTER LEDtube Mains T5 installs in luminaires operating on mains power connection. So simple to operate! . Perfectly safe, reliable & easy to install Philips MASTER LEDtube Mains T5 is the ideal alternative to standard fluorescent tubes to maximize value over lifetime with high energy saving and lower maintenance costs.

Product data

General Information	
Cap-Base	G5
Nominal lifetime	50,000 hour(s)
Switching Cycle	200,000
Lighting Technology	LED
Flux measurement reference	Sphere
EU RoHS compliant	Yes
Light Technical	
Color Code	865 [CCT of 6500K]
Beam Angle (Nom)	200 degree(s)
Luminous Flux	3,000 lm
Color Designation	Cool Daylight
Correlated Color Temperature (Nom)	6500 K
Luminous Efficacy (rated) (Nom)	150.00 lm/W
Color Consistency	<6
Color rendering index (CRI)	80

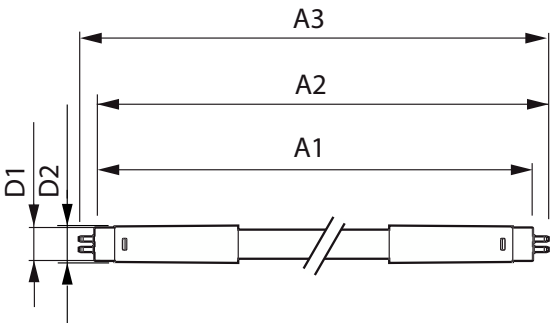
LLMF At End Of Nominal Lifetime (Nom) 70 %	
Operating and Electrical	
Line Frequency	50 to 60 Hz
Input Frequency	50 to 60 Hz
Power Consumption	20 W
Lamp Current (Max)	230 mA
Lamp Current (Min)	85 mA
Starting Time (Nom)	0.5 s
Warm-up time to 60% light	0.5 s
Power Factor (Fraction)	0.9
Voltage (Nom)	100-240 V
Temperature	
Ambient temperature range	-20 °C to 45 °C
T-Case Maximum (Nom)	75 °C

MASTER LEDtube Mains T5

Controls and Dimming	
Dimmable	No
Mechanical and Housing	
Bulb Finish	Frosted
Bulb Material	Glass
Product Length	1,500 mm
Bulb Shape	T5
Approval and Application	
Energy Efficiency Class	D
Energy Saving Product	Yes
Approval Marks	RoHS compliance CE marking KEMA Keur certificate
Energy Consumption kWh/1000 h	20 kWh

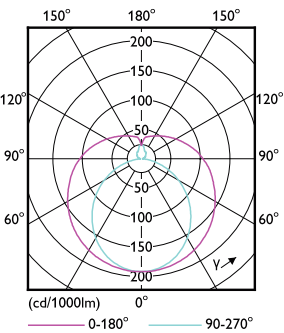
EPREL Registration Number	1476405
Product Data	
Order product name	MAS LEDtube 1500mm HE 20W 865 T5
Full product name	MAS LEDtube 1500mm HE 20W 865 T5
Full product code	871869978359400
Order code	929002421408
Material Nr. (12NC)	929002421408
Numerator - Quantity Per Pack	1
EAN/UPC - Product/Case	8718699783594
Numerator - Packs per outer box	10
EAN/UPC - Case	8718699783600

Dimensional drawing

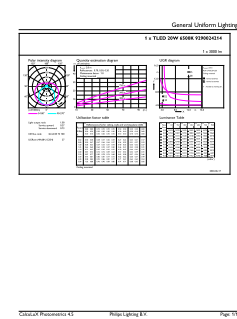


Product	D1	D2	A1	A2	A3
MAS LEDtube 1500mm HE 20W 865 T5	15.8 mm	19 mm	1,449 mm	1,454.9 mm	1,463.2 mm

Photometric data



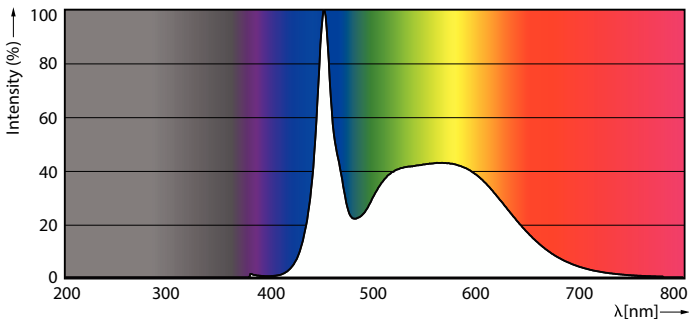
Light Distribution Diagram - MAS LEDtube 1500mm HE 20W 865 T5



General uniform lighting - MAS LEDtube 1500mm HE 20W 865 T5

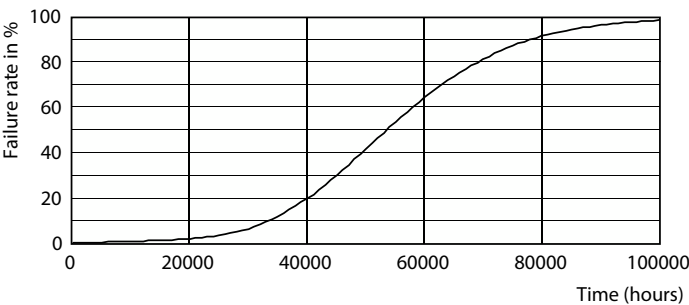
MASTER LEDtube Mains T5

Photometric data

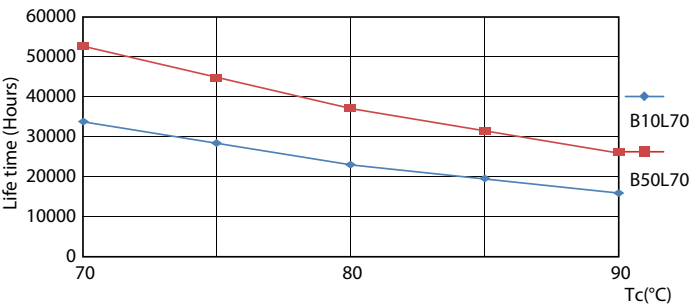


Spectral Power Distribution Colour - MAS LEDtube 1500mm HE 20W 865 T5

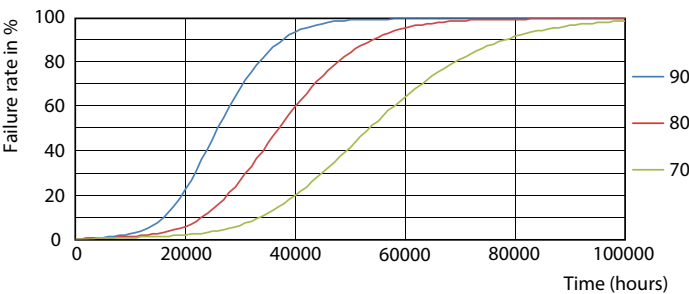
Lifetime



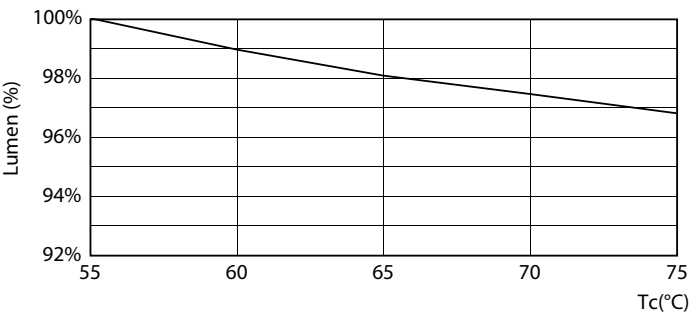
Life Expectancy Diagram - MAS LEDtube 1500mm HE 20W 865 T5



Life Expectancy Diagram - MAS LEDtube 1500mm HE 20W 865 T5



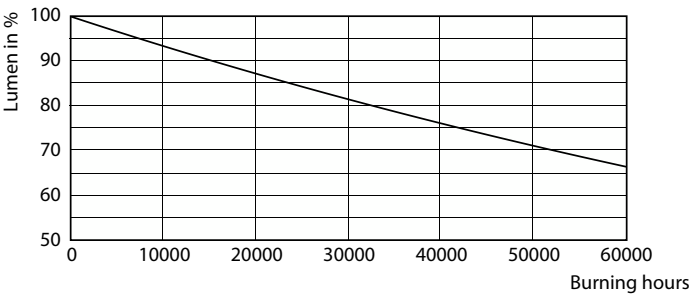
Life Expectancy Diagram - MAS LEDtube 1500mm HE 20W 865 T5



Lumen Maintenance Diagram - MAS LEDtube 1500mm HE 20W 865 T5

MASTER LEDtube Mains T5

Lifetime



Lumen Maintenance Diagram - MAS LEDtube 1500mm HE 20W 865 T5

