

# Day-Brite



by Signify

## Industrial

### Vaporlume LED V2

4' sealed industrial  
3500 to 7000 lm



Control options available

Day-Brite / CFI Vaporlume LED sealed industrial V2 is a specialized wet location, IP rated product designed for use in both indoor and outdoor environments. It is a wet location listed, non-corrosive luminaire available in both fluorescent and LED light sources.

Project: \_\_\_\_\_  
 Location: \_\_\_\_\_  
 Cat.No: \_\_\_\_\_  
 Type: \_\_\_\_\_  
 Lumens: \_\_\_\_\_ Qty: \_\_\_\_\_  
 Notes: \_\_\_\_\_

### Ordering guide

Example: V2WAE51L840-4-UNV-MD360W

Family	Application	Lens	Hubs Installed	Lumen Package	Color Temp.	Length	Voltage	Driver	Options
V2	W				-	-	-	-	
V2 Vaporlume	W Wet location	A DR Acrylic P Polycarbonate L Enhanced LED Acrylic	E Ends only T Top only B Both ends and top	35L 3500 nominal lumens 43L 4300 nominal lumens 51L 5100 nominal lumens (25°C ambient) 51LH 5100 nominal lumens (-35°C to 40°C) 70L 7000 nominal lumens  Other lumen packages may be ordered in increments of 100lm up to 7000 lumens.	830 80 CRI, 3000K 835 80 CRI, 3500K 840 80 CRI, 4000K 850 80 CRI, 5000K	4 4'	UNV Universal Voltage, 120-277V 347' 347V 480' 480V	blank 0-10V dimming SDIM <sup>2</sup> Step dimming to 40% input power	MD360W <sup>5</sup> Wet location occupancy sensor, external MD360WD <sup>5</sup> Wet location occupancy sensor, (ON/DIM to 10%) WHP Wide Beam Optic EM10 <sup>3</sup> Integral Emergency IP67 Protection against effects of immersion GLR Fusing, fast blow TR Torx T-15 tamper resistant stainless steel latches (TPDH tamper proof driver required) SWZCSH <sup>4</sup> Interact Pro scalable high bay sensor with integral daylight & occupancy sensing, advanced grouping with dwell time

### Footnotes

- All 347V and 480V models available only for (-20°C to 25°C) ambient. Not available for use with 51LH or SDIM options.
- Step dim (SDIM) option not available on 51LH.
- EM10 option not available on 347V or 480V models.
- High bay motion detector. Motion sensing zone is extremely limited if used below 15' mounting height.
- Not available with SWZCSH option.

### Accessories (order separately)

- TBK - Stainless Steel Top Bracket Kit (pair of brackets plus hardware)
- EBK - Stainless Steel End Bracket Kit (pair of brackets plus hardware)
- WBK - Stainless Steel Wraparound Bracket Kit (pair of brackets)
- FKR-126 - Chain Hanger Set (requires TBK)
- TPDTH - Tamper proof driver, Torx T-15 head pin drive and handle (required with TR option)
- V2/DW-4ARL-CS - 4' Acrylic Replacement Lens
- V2/DW-4PRL-CS - 4' Polycarbonate Replacement Lens
- V2/DW-4LRA - 4' LED Frosted Acrylic Replacement Lens



# V2 Vaporlume LED sealed industrial

4', 3500 to 7000 lumens

## Application

- Ideally suited for use in refrigerated cold storage, industrial, parking garage, and canopy applications.
- Acceptable for outdoor as well as indoor installations.
- Can be surface (wall/ceiling) or suspended mounted unless otherwise specified.
- Wet Location – Areas of high humidity, water vapor, rain, incidental water spray, or other non-corrosive or nonflammable liquid.
- Excellent for applications such as garages, stairwells, storage areas, horizontal shelf-mount refrigerated cases, and cold storage.
- Mounting brackets available, order separately.
- IP65 rating standard. IP67 configuration available.
- LED sources provide excellent low temperature performance. This product can replace a fluorescent model in cold environments with significant energy savings.
- 51LH model listed for use in -35°C to 40°C ambient. 50,000 hour L70 lumen maintenance.
- 35L/43L models listed for use in -20°C to 40°C ambient. 100,000 hour L70 lumen maintenance.
- 51L/70L models listed for use in -20°C to 25°C ambient. L70 lumen maintenance is 100,000 hours for 51L model, and 50,000 hours for 70L.
- NSF Certified for Non-Food Zone Installations.
- EM10 1100lm nominal in DC mode
- WHP wide optic is an acrylic lens factory installed on the LED arrays, provides compliance to DLC requirements for parking garage luminaires
- Vaporlume LED luminaires are Designlights Consortium qualified. Please see the DLC QPL list for exact catalog numbers (<http://www.designlights.org/QPL>).

## Construction/Finish

- Non-conductive, non-corrosive housing.
- Smooth exterior surface for easy cleaning.

- White one piece, molded fiberglass reinforced polyester body. No rusting, no oxidation, and no corrosion.
- Standard acrylic lens (A) is stippled sheet of .130" nominal thickness.
- Optional LED lens (L) designed specifically to further reduce pixilated glare from LED's. Linear rib profile.
- Optional polycarbonate lens (P) will not be yellowed by LED sources because they do not produce UV.
- Continuous compressible closed cell gasket provides tight seal between plastic enclosure and luminaire body.
- Stainless steel cam action latches.
- Lighting channel painted after fabrication with polyester powder coating.
- Two gasketed threaded (½" trade size) wet location hubs installed on ends.

## Electrical

- High efficiency LEDs provide up to 100,000 hour rated life (L70, defined as 70% lumen maintenance @ rated maximum ambient).
- Dimming to 5% on 0-10V controls standard. Step dim (SDIM) option available, 100/40% levels.
- Driver and LED boards are accessible from below. LED boards are individually replaceable if required.
- Combinations are available providing as much as 117 delivered lumens per Watt.
- Nominal lumen packages range from 3,500 to 7,000 lumens, providing flexibility to optimize light levels for a specific application.
- LED sources provide full illumination in low temperature applications, unlike fluorescent sources that provide reduced light levels in very cold environments.
- LED sources can be frequently switched with no negative impact on life.
- Minimum 80 CRI provides smooth color rendering that rivals or exceeds performance of fluorescent lamps.
- Light output from the luminaire contains no infrared or ultraviolet energy, so the light won't heat or fade the objects being lit.

- Available motion sensor further increases energy savings in areas where occupancy is not continuous.

## Labels

- cETLus listed to UL 1598. Suitable for use in wet locations.
- 5 Year Limited Warranty, [www.signify.com/warranties](http://www.signify.com/warranties)
- Certain luminaire components may be adversely affected by contaminants. If sulfur, chlorine, or petroleum based solutions, or other contaminants will be in the area of operation, please consult factory as damage caused by these contaminants are not covered under our limited warranty.

## Controls Options\*

### Interact radio node for Standalone, Gateway & Gateway + IoT tiers (RA)

- RA sensor option is a connected radio node supporting wireless mesh connectivity.
- Compatible with standalone and gateway modes of Interact.

### Interact occupancy & daylight sensor for Standalone, Gateway & Gateway + IoT tiers (CS)

- The CS sensor option is a connected sensor with built-in occupancy and daylight detection, along with wireless mesh connectivity.
- Compatible with standalone and gateway modes of Interact.

### Interact advanced sensor bundle for Gateway + IoT tier (SB)

- SB sensor option offers occupancy and daylight sensing and supports advanced IoT capabilities, such as desk-level temperature and humidity monitoring, noise classification, and Bluetooth Low Energy (BLE) beacon functionality.
- Setup requires a compatible gateway and internet connectivity.
- With compatible gateway and software analytics, SB sensor option enables greater building efficiency, seamless system integration, and optimized space utilization through occupancy and environmental insights.

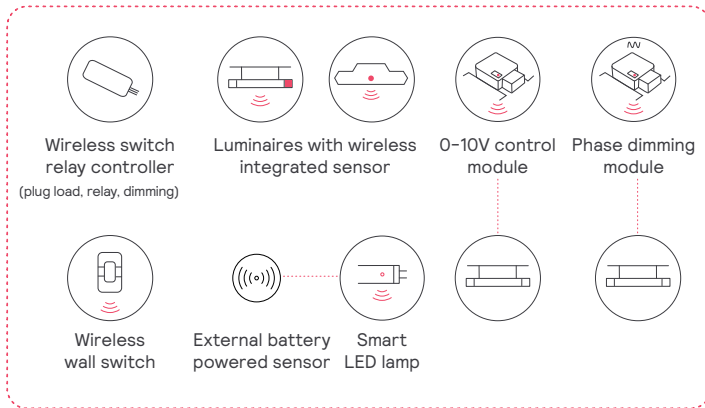
Interact for intelligent buildings sensor option codes across Genlyte product lines\*

	Sensor part #	Daybrite	Ledalite	Lightolier
Zigbee + Bluetooth	SC100B	RADIO	RA	RA
Zigbee + Bluetooth + Sensing	SC200B	SWZCS	CS	SBA or SWCS accessory
Zigbee + Bluetooth + Sensing + Environmental data	SC1500	IAOSB	SB	SBA or SWCS accessory
Zigbee + Highbay + Bluetooth + Sensing	SNH210 IA	SWZCSH	-	-

# V2 Vaporlume LED sealed industrial

4', 3500 to 7000 lumens

## Signify interact **Easy. Effective. Smart.**



### Meet Interact

A smart, wireless luminaire level lighting control system (LLLLC). A complete solution that combines modern and intuitive technologies for easy installation and specification.

- Works with or without gateway
- **No** IT
- **No** light point restrictions
- **Up to 75%** out of the box savings
- **Fast & easy**
- **Code & rebates** compliant

### Capabilities

- Luminaire integrated occupancy and daylight sensing
- BMS integration
- Human-centric lighting
- Connectivity & insights
- Full Automation\*
- Security

\*Grouping, zoning, dimming, high-end trimming, scenes, scheduling, manual controls

### Benefits

- Up to 80% installation savings<sup>1</sup>**  
Compared to installation costs of wired systems
- Up to 5 min faster setup time<sup>2</sup>**  
Compared to similar wireless systems
- Less than 2 year payback**  
Implement deep energy-saving strategies and claim utility rebates
- 1.8x more energy savings**  
Compared to conventional control systems
- Up to 2x utility rebates**  
Network Interact ready devices and get more utility rebates<sup>3</sup>

1. Versus legacy systems based on installer interviews
2. Based on installer analysis done by Signify for a typical multi-zone space
3. Utility programs across US

### Just lights and an App



1. Install the Interact ready fixtures with embedded smart sensor
2. Install the wireless wall switch
3. Configure your setup with the Interact App
4. Leverage the IRT9015 remote accessory to accelerate your setup process
5. Optionally add a gateway for insights and management

#### Learn more about Interact:

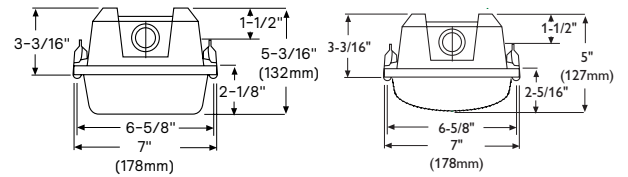
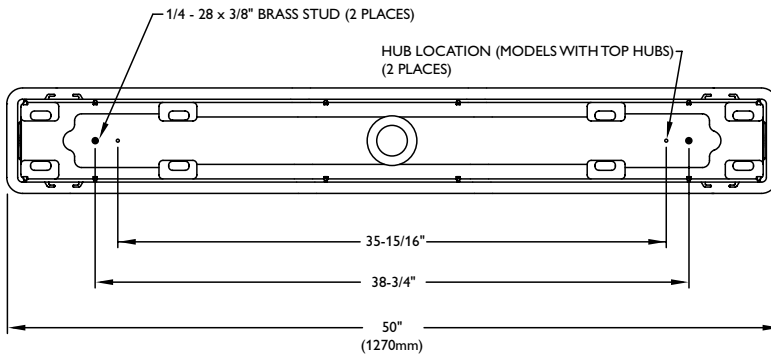
Interact includes an app, a web portal, and a comprehensive range of Interact ready wireless luminaires, lamps, retrofit kits, and control devices like switches and sensors that operate within the same system.



# V2 Vaporlume LED sealed industrial

4', 3500 to 7000 lumens

## Dimensions

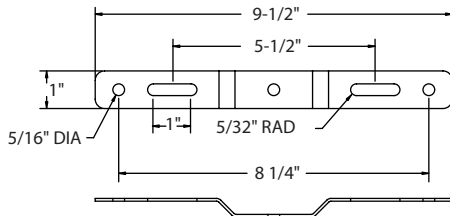


• Shallow acrylic (A) and polycarbonate (P) lens

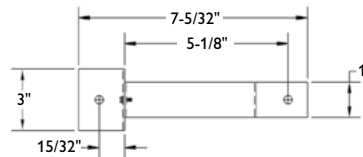
• Enhanced LED acrylic lens (L)

## Mounting Brackets

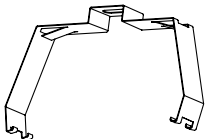
TBK - Top Mounting Bracket



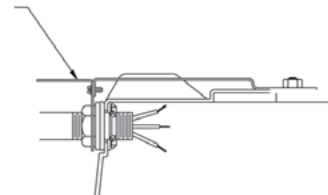
EBK - End Mounting Bracket



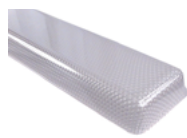
WBK - Wraparound Mounting Bracket



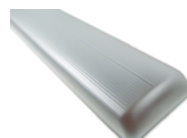
EBK - End Mounting Bracket



Acrylic Lens



Polycarbonate Lens



LED Frosted Acrylic Lens

# V2 Vaporlume LED sealed industrial

4', 3500 to 7000 lumens

## 4' Vaporlume LED V2, 3500 nominal lumens LER-117

<b>Catalog No.</b> V2WAE35L840-4 <b>Test No.</b> 32643 <b>S/MH</b> 1.2 <b>Source</b> LED <b>Input Watts</b> 32 <b>Delivered Lumens</b> 3699	<b>Candlepower</b> <table border="1"> <thead> <tr> <th>Angle</th> <th>End</th> <th>45</th> <th>Cross</th> <th>Back-45</th> </tr> </thead> <tbody> <tr><td>0</td><td>1250</td><td>1250</td><td>1250</td><td>1250</td></tr> <tr><td>5</td><td>1244</td><td>1239</td><td>1243</td><td>1239</td></tr> <tr><td>15</td><td>1204</td><td>1201</td><td>1199</td><td>1201</td></tr> <tr><td>25</td><td>1112</td><td>1114</td><td>1106</td><td>1114</td></tr> <tr><td>35</td><td>966</td><td>964</td><td>949</td><td>964</td></tr> <tr><td>45</td><td>778</td><td>777</td><td>841</td><td>777</td></tr> <tr><td>55</td><td>576</td><td>685</td><td>708</td><td>685</td></tr> <tr><td>65</td><td>371</td><td>509</td><td>472</td><td>509</td></tr> <tr><td>75</td><td>193</td><td>250</td><td>271</td><td>250</td></tr> <tr><td>85</td><td>49</td><td>91</td><td>96</td><td>91</td></tr> <tr><td>95</td><td>19</td><td>36</td><td>28</td><td>36</td></tr> <tr><td>105</td><td>17</td><td>30</td><td>20</td><td>30</td></tr> <tr><td>115</td><td>10</td><td>28</td><td>20</td><td>28</td></tr> <tr><td>125</td><td>4</td><td>19</td><td>19</td><td>19</td></tr> <tr><td>135</td><td>2</td><td>10</td><td>17</td><td>10</td></tr> <tr><td>145</td><td>1</td><td>3</td><td>9</td><td>3</td></tr> <tr><td>155</td><td>1</td><td>1</td><td>2</td><td>1</td></tr> <tr><td>165</td><td>1</td><td>1</td><td>1</td><td>1</td></tr> <tr><td>175</td><td>1</td><td>1</td><td>1</td><td>1</td></tr> </tbody> </table>					Angle	End	45	Cross	Back-45	0	1250	1250	1250	1250	5	1244	1239	1243	1239	15	1204	1201	1199	1201	25	1112	1114	1106	1114	35	966	964	949	964	45	778	777	841	777	55	576	685	708	685	65	371	509	472	509	75	193	250	271	250	85	49	91	96	91	95	19	36	28	36	105	17	30	20	30	115	10	28	20	28	125	4	19	19	19	135	2	10	17	10	145	1	3	9	3	155	1	1	2	1	165	1	1	1	1	175	1	1	1	1	<b>Coefficients of Utilization</b> <b>EFFECTIVE FLOOR CAVITY REFLECTANCE 20 PER (pfc=0.20)</b> <table border="1"> <thead> <tr> <th rowspan="2">pcc</th> <th colspan="3">80</th> <th colspan="3">70</th> <th colspan="3">50</th> </tr> <tr> <th>pw</th> <th>70</th> <th>50</th> <th>30</th> <th>70</th> <th>50</th> <th>30</th> <th>50</th> <th>30</th> </tr> </thead> <tbody> <tr><td>RCR</td><td></td><td></td><td></td><td></td><td></td><td></td><td></td><td></td><td></td></tr> <tr><td>0</td><td>117</td><td>117</td><td>117</td><td></td><td>114</td><td>114</td><td>114</td><td></td><td>110</td><td>110</td></tr> <tr><td>1</td><td>108</td><td>103</td><td>97</td><td></td><td>105</td><td>100</td><td>95</td><td></td><td>94</td><td>92</td></tr> <tr><td>2</td><td>97</td><td>89</td><td>81</td><td></td><td>94</td><td>86</td><td>80</td><td></td><td>82</td><td>77</td></tr> <tr><td>3</td><td>89</td><td>78</td><td>69</td><td></td><td>85</td><td>76</td><td>68</td><td></td><td>72</td><td>66</td></tr> <tr><td>4</td><td>81</td><td>68</td><td>59</td><td></td><td>79</td><td>68</td><td>58</td><td></td><td>65</td><td>56</td></tr> <tr><td>5</td><td>75</td><td>61</td><td>53</td><td></td><td>71</td><td>59</td><td>52</td><td></td><td>57</td><td>50</td></tr> <tr><td>6</td><td>68</td><td>55</td><td>46</td><td></td><td>67</td><td>54</td><td>46</td><td></td><td>52</td><td>45</td></tr> <tr><td>7</td><td>64</td><td>50</td><td>40</td><td></td><td>61</td><td>48</td><td>40</td><td></td><td>46</td><td>40</td></tr> <tr><td>8</td><td>58</td><td>46</td><td>36</td><td></td><td>57</td><td>45</td><td>36</td><td></td><td>42</td><td>35</td></tr> <tr><td>9</td><td>56</td><td>41</td><td>34</td><td></td><td>54</td><td>40</td><td>33</td><td></td><td>40</td><td>33</td></tr> <tr><td>10</td><td>52</td><td>39</td><td>30</td><td></td><td>51</td><td>38</td><td>30</td><td></td><td>36</td><td>29</td></tr> </tbody> </table>					pcc	80			70			50			pw	70	50	30	70	50	30	50	30	RCR										0	117	117	117		114	114	114		110	110	1	108	103	97		105	100	95		94	92	2	97	89	81		94	86	80		82	77	3	89	78	69		85	76	68		72	66	4	81	68	59		79	68	58		65	56	5	75	61	53		71	59	52		57	50	6	68	55	46		67	54	46		52	45	7	64	50	40		61	48	40		46	40	8	58	46	36		57	45	36		42	35	9	56	41	34		54	40	33		40	33	10	52	39	30		51	38	30		36	29
	Angle	End	45	Cross	Back-45																																																																																																																																																																																																																																																															
0	1250	1250	1250	1250																																																																																																																																																																																																																																																																
5	1244	1239	1243	1239																																																																																																																																																																																																																																																																
15	1204	1201	1199	1201																																																																																																																																																																																																																																																																
25	1112	1114	1106	1114																																																																																																																																																																																																																																																																
35	966	964	949	964																																																																																																																																																																																																																																																																
45	778	777	841	777																																																																																																																																																																																																																																																																
55	576	685	708	685																																																																																																																																																																																																																																																																
65	371	509	472	509																																																																																																																																																																																																																																																																
75	193	250	271	250																																																																																																																																																																																																																																																																
85	49	91	96	91																																																																																																																																																																																																																																																																
95	19	36	28	36																																																																																																																																																																																																																																																																
105	17	30	20	30																																																																																																																																																																																																																																																																
115	10	28	20	28																																																																																																																																																																																																																																																																
125	4	19	19	19																																																																																																																																																																																																																																																																
135	2	10	17	10																																																																																																																																																																																																																																																																
145	1	3	9	3																																																																																																																																																																																																																																																																
155	1	1	2	1																																																																																																																																																																																																																																																																
165	1	1	1	1																																																																																																																																																																																																																																																																
175	1	1	1	1																																																																																																																																																																																																																																																																
pcc	80			70			50																																																																																																																																																																																																																																																													
	pw	70	50	30	70	50	30	50	30																																																																																																																																																																																																																																																											
RCR																																																																																																																																																																																																																																																																				
0	117	117	117		114	114	114		110	110																																																																																																																																																																																																																																																										
1	108	103	97		105	100	95		94	92																																																																																																																																																																																																																																																										
2	97	89	81		94	86	80		82	77																																																																																																																																																																																																																																																										
3	89	78	69		85	76	68		72	66																																																																																																																																																																																																																																																										
4	81	68	59		79	68	58		65	56																																																																																																																																																																																																																																																										
5	75	61	53		71	59	52		57	50																																																																																																																																																																																																																																																										
6	68	55	46		67	54	46		52	45																																																																																																																																																																																																																																																										
7	64	50	40		61	48	40		46	40																																																																																																																																																																																																																																																										
8	58	46	36		57	45	36		42	35																																																																																																																																																																																																																																																										
9	56	41	34		54	40	33		40	33																																																																																																																																																																																																																																																										
10	52	39	30		51	38	30		36	29																																																																																																																																																																																																																																																										
Comparative yearly lighting energy cost per 1000 lumens - <b>\$2.03</b> based on 3000 hrs. and \$.08 pwr KWH.  Photometric values based upon tests performed in compliance with LM-79.	<b>Light Distribution</b> <table border="1"> <thead> <tr> <th>Degrees</th> <th>Lumens</th> <th>% Luminaire</th> </tr> </thead> <tbody> <tr><td>0-30</td><td>969</td><td>26.1</td></tr> <tr><td>0-40</td><td>1569</td><td>42.3</td></tr> <tr><td>0-60</td><td>2772</td><td>74.8</td></tr> <tr><td>0-90</td><td>3602</td><td>97.1</td></tr> <tr><td>90-120</td><td>81</td><td>2.2</td></tr> <tr><td>90-130</td><td>95</td><td>2.6</td></tr> <tr><td>90-150</td><td>105</td><td>2.8</td></tr> <tr><td>90-180</td><td>106</td><td>2.9</td></tr> <tr><td>0-180</td><td>3708</td><td>100.0</td></tr> </tbody> </table>					Degrees	Lumens	% Luminaire	0-30	969	26.1	0-40	1569	42.3	0-60	2772	74.8	0-90	3602	97.1	90-120	81	2.2	90-130	95	2.6	90-150	105	2.8	90-180	106	2.9	0-180	3708	100.0	<b>Average Luminance</b> <table border="1"> <thead> <tr> <th>Angle</th> <th>End</th> <th>45°</th> <th>Cross</th> </tr> </thead> <tbody> <tr><td>45</td><td>5069</td><td>4222</td><td>4360</td></tr> <tr><td>55</td><td>4543</td><td>4228</td><td>4105</td></tr> <tr><td>65</td><td>865</td><td>3770</td><td>3222</td></tr> <tr><td>75</td><td>3096</td><td>2402</td><td>2333</td></tr> <tr><td>85</td><td>1821</td><td>1312</td><td>1164</td></tr> </tbody> </table>					Angle	End	45°	Cross	45	5069	4222	4360	55	4543	4228	4105	65	865	3770	3222	75	3096	2402	2333	85	1821	1312	1164																																																																																																																																																																																																				
Degrees	Lumens	% Luminaire																																																																																																																																																																																																																																																																		
0-30	969	26.1																																																																																																																																																																																																																																																																		
0-40	1569	42.3																																																																																																																																																																																																																																																																		
0-60	2772	74.8																																																																																																																																																																																																																																																																		
0-90	3602	97.1																																																																																																																																																																																																																																																																		
90-120	81	2.2																																																																																																																																																																																																																																																																		
90-130	95	2.6																																																																																																																																																																																																																																																																		
90-150	105	2.8																																																																																																																																																																																																																																																																		
90-180	106	2.9																																																																																																																																																																																																																																																																		
0-180	3708	100.0																																																																																																																																																																																																																																																																		
Angle	End	45°	Cross																																																																																																																																																																																																																																																																	
45	5069	4222	4360																																																																																																																																																																																																																																																																	
55	4543	4228	4105																																																																																																																																																																																																																																																																	
65	865	3770	3222																																																																																																																																																																																																																																																																	
75	3096	2402	2333																																																																																																																																																																																																																																																																	
85	1821	1312	1164																																																																																																																																																																																																																																																																	

## 4' Vaporlume LED V2, 4300 nominal lumens LER-116

<b>Catalog No.</b> V2WAE43L840-4 <b>Test No.</b> 32642 <b>S/MH</b> 1.2 <b>Source</b> LED <b>Input Watts</b> 38 <b>Delivered Lumens</b> 4431	<b>Candlepower</b> <table border="1"> <thead> <tr> <th>Angle</th> <th>End</th> <th>45</th> <th>Cross</th> <th>Back-45</th> </tr> </thead> <tbody> <tr><td>0</td><td>1496</td><td>1496</td><td>1496</td><td>1496</td></tr> <tr><td>5</td><td>1491</td><td>1487</td><td>1485</td><td>1487</td></tr> <tr><td>15</td><td>1443</td><td>1439</td><td>1441</td><td>1439</td></tr> <tr><td>25</td><td>1332</td><td>1338</td><td>1323</td><td>1338</td></tr> <tr><td>35</td><td>1158</td><td>1151</td><td>1132</td><td>1151</td></tr> <tr><td>45</td><td>933</td><td>926</td><td>1000</td><td>926</td></tr> <tr><td>55</td><td>688</td><td>819</td><td>854</td><td>819</td></tr> <tr><td>65</td><td>444</td><td>611</td><td>566</td><td>611</td></tr> <tr><td>75</td><td>231</td><td>300</td><td>324</td><td>300</td></tr> <tr><td>85</td><td>58</td><td>110</td><td>118</td><td>110</td></tr> <tr><td>95</td><td>23</td><td>43</td><td>35</td><td>43</td></tr> <tr><td>105</td><td>20</td><td>36</td><td>25</td><td>36</td></tr> <tr><td>115</td><td>12</td><td>34</td><td>24</td><td>34</td></tr> <tr><td>125</td><td>5</td><td>24</td><td>24</td><td>24</td></tr> <tr><td>135</td><td>3</td><td>12</td><td>21</td><td>12</td></tr> <tr><td>145</td><td>2</td><td>4</td><td>11</td><td>4</td></tr> <tr><td>155</td><td>1</td><td>1</td><td>3</td><td>1</td></tr> <tr><td>165</td><td>1</td><td>1</td><td>1</td><td>1</td></tr> <tr><td>175</td><td>1</td><td>1</td><td>1</td><td>1</td></tr> </tbody> </table>					Angle	End	45	Cross	Back-45	0	1496	1496	1496	1496	5	1491	1487	1485	1487	15	1443	1439	1441	1439	25	1332	1338	1323	1338	35	1158	1151	1132	1151	45	933	926	1000	926	55	688	819	854	819	65	444	611	566	611	75	231	300	324	300	85	58	110	118	110	95	23	43	35	43	105	20	36	25	36	115	12	34	24	34	125	5	24	24	24	135	3	12	21	12	145	2	4	11	4	155	1	1	3	1	165	1	1	1	1	175	1	1	1	1	<b>Coefficients of Utilization</b> <b>EFFECTIVE FLOOR CAVITY REFLECTANCE 20 PER (pfc=0.20)</b> <table border="1"> <thead> <tr> <th rowspan="2">pcc</th> <th colspan="3">80</th> <th colspan="3">70</th> <th colspan="3">50</th> </tr> <tr> <th>pw</th> <th>70</th> <th>50</th> <th>30</th> <th>70</th> <th>50</th> <th>30</th> <th>50</th> <th>30</th> </tr> </thead> <tbody> <tr><td>RCR</td><td></td><td></td><td></td><td></td><td></td><td></td><td></td><td></td><td></td></tr> <tr><td>0</td><td>117</td><td>117</td><td>117</td><td></td><td>114</td><td>114</td><td>114</td><td></td><td>109</td><td>109</td></tr> <tr><td>1</td><td>108</td><td>103</td><td>97</td><td></td><td>104</td><td>100</td><td>95</td><td></td><td>94</td><td>92</td></tr> <tr><td>2</td><td>97</td><td>89</td><td>81</td><td></td><td>94</td><td>86</td><td>80</td><td></td><td>82</td><td>77</td></tr> <tr><td>3</td><td>89</td><td>78</td><td>69</td><td></td><td>85</td><td>76</td><td>68</td><td></td><td>72</td><td>66</td></tr> <tr><td>4</td><td>81</td><td>68</td><td>59</td><td></td><td>79</td><td>67</td><td>58</td><td></td><td>65</td><td>56</td></tr> <tr><td>5</td><td>75</td><td>61</td><td>53</td><td></td><td>71</td><td>59</td><td>52</td><td></td><td>57</td><td>50</td></tr> <tr><td>6</td><td>68</td><td>55</td><td>46</td><td></td><td>67</td><td>54</td><td>46</td><td></td><td>52</td><td>45</td></tr> <tr><td>7</td><td>64</td><td>50</td><td>40</td><td></td><td>61</td><td>48</td><td>40</td><td></td><td>46</td><td>40</td></tr> <tr><td>8</td><td>58</td><td>46</td><td>36</td><td></td><td>57</td><td>45</td><td>36</td><td></td><td>42</td><td>35</td></tr> <tr><td>9</td><td>56</td><td>41</td><td>34</td><td></td><td>54</td><td>40</td><td>33</td><td></td><td>40</td><td>33</td></tr> <tr><td>10</td><td>52</td><td>39</td><td>30</td><td></td><td>51</td><td>38</td><td>30</td><td></td><td>36</td><td>29</td></tr> </tbody> </table>					pcc	80			70			50			pw	70	50	30	70	50	30	50	30	RCR										0	117	117	117		114	114	114		109	109	1	108	103	97		104	100	95		94	92	2	97	89	81		94	86	80		82	77	3	89	78	69		85	76	68		72	66	4	81	68	59		79	67	58		65	56	5	75	61	53		71	59	52		57	50	6	68	55	46		67	54	46		52	45	7	64	50	40		61	48	40		46	40	8	58	46	36		57	45	36		42	35	9	56	41	34		54	40	33		40	33	10	52	39	30		51	38	30		36	29
	Angle	End	45	Cross	Back-45																																																																																																																																																																																																																																																															
0	1496	1496	1496	1496																																																																																																																																																																																																																																																																
5	1491	1487	1485	1487																																																																																																																																																																																																																																																																
15	1443	1439	1441	1439																																																																																																																																																																																																																																																																
25	1332	1338	1323	1338																																																																																																																																																																																																																																																																
35	1158	1151	1132	1151																																																																																																																																																																																																																																																																
45	933	926	1000	926																																																																																																																																																																																																																																																																
55	688	819	854	819																																																																																																																																																																																																																																																																
65	444	611	566	611																																																																																																																																																																																																																																																																
75	231	300	324	300																																																																																																																																																																																																																																																																
85	58	110	118	110																																																																																																																																																																																																																																																																
95	23	43	35	43																																																																																																																																																																																																																																																																
105	20	36	25	36																																																																																																																																																																																																																																																																
115	12	34	24	34																																																																																																																																																																																																																																																																
125	5	24	24	24																																																																																																																																																																																																																																																																
135	3	12	21	12																																																																																																																																																																																																																																																																
145	2	4	11	4																																																																																																																																																																																																																																																																
155	1	1	3	1																																																																																																																																																																																																																																																																
165	1	1	1	1																																																																																																																																																																																																																																																																
175	1	1	1	1																																																																																																																																																																																																																																																																
pcc	80			70			50																																																																																																																																																																																																																																																													
	pw	70	50	30	70	50	30	50	30																																																																																																																																																																																																																																																											
RCR																																																																																																																																																																																																																																																																				
0	117	117	117		114	114	114		109	109																																																																																																																																																																																																																																																										
1	108	103	97		104	100	95		94	92																																																																																																																																																																																																																																																										
2	97	89	81		94	86	80		82	77																																																																																																																																																																																																																																																										
3	89	78	69		85	76	68		72	66																																																																																																																																																																																																																																																										
4	81	68	59		79	67	58		65	56																																																																																																																																																																																																																																																										
5	75	61	53		71	59	52		57	50																																																																																																																																																																																																																																																										
6	68	55	46		67	54	46		52	45																																																																																																																																																																																																																																																										
7	64	50	40		61	48	40		46	40																																																																																																																																																																																																																																																										
8	58	46	36		57	45	36		42	35																																																																																																																																																																																																																																																										
9	56	41	34		54	40	33		40	33																																																																																																																																																																																																																																																										
10	52	39	30		51	38	30		36	29																																																																																																																																																																																																																																																										
Comparative yearly lighting energy cost per 1000 lumens - <b>\$2.07</b> based on 3000 hrs. and \$.08 pwr KWH.  Photometric values based upon tests performed in compliance with LM-79.	<b>Light Distribution</b> <table border="1"> <thead> <tr> <th>Degrees</th> <th>Lumens</th> <th>% Luminaire</th> </tr> </thead> <tbody> <tr><td>0-30</td><td>1161</td><td>26.1</td></tr> <tr><td>0-40</td><td>1880</td><td>42.3</td></tr> <tr><td>0-60</td><td>3318</td><td>74.7</td></tr> <tr><td>0-90</td><td>4313</td><td>97.1</td></tr> <tr><td>90-120</td><td>99</td><td>2.2</td></tr> <tr><td>90-130</td><td>116</td><td>2.6</td></tr> <tr><td>90-150</td><td>128</td><td>2.9</td></tr> <tr><td>90-180</td><td>129</td><td>2.9</td></tr> <tr><td>0-180</td><td>4442</td><td>100.0</td></tr> </tbody> </table>					Degrees	Lumens	% Luminaire	0-30	1161	26.1	0-40	1880	42.3	0-60	3318	74.7	0-90	4313	97.1	90-120	99	2.2	90-130	116	2.6	90-150	128	2.9	90-180	129	2.9	0-180	4442	100.0	<b>Average Luminance</b> <table border="1"> <thead> <tr> <th>Angle</th> <th>End</th> <th>45°</th> <th>Cross</th> </tr> </thead> <tbody> <tr><td>45</td><td>6078</td><td>5034</td><td>5182</td></tr> <tr><td>55</td><td>5434</td><td>5059</td><td>4955</td></tr> <tr><td>65</td><td>4626</td><td>4531</td><td>3867</td></tr> <tr><td>75</td><td>3704</td><td>2883</td><td>2786</td></tr> <tr><td>85</td><td>2173</td><td>1578</td><td>1433</td></tr> </tbody> </table>					Angle	End	45°	Cross	45	6078	5034	5182	55	5434	5059	4955	65	4626	4531	3867	75	3704	2883	2786	85	2173	1578	1433																																																																																																																																																																																																				
Degrees	Lumens	% Luminaire																																																																																																																																																																																																																																																																		
0-30	1161	26.1																																																																																																																																																																																																																																																																		
0-40	1880	42.3																																																																																																																																																																																																																																																																		
0-60	3318	74.7																																																																																																																																																																																																																																																																		
0-90	4313	97.1																																																																																																																																																																																																																																																																		
90-120	99	2.2																																																																																																																																																																																																																																																																		
90-130	116	2.6																																																																																																																																																																																																																																																																		
90-150	128	2.9																																																																																																																																																																																																																																																																		
90-180	129	2.9																																																																																																																																																																																																																																																																		
0-180	4442	100.0																																																																																																																																																																																																																																																																		
Angle	End	45°	Cross																																																																																																																																																																																																																																																																	
45	6078	5034	5182																																																																																																																																																																																																																																																																	
55	5434	5059	4955																																																																																																																																																																																																																																																																	
65	4626	4531	3867																																																																																																																																																																																																																																																																	
75	3704	2883	2786																																																																																																																																																																																																																																																																	
85	2173	1578	1433																																																																																																																																																																																																																																																																	

# V2 Vaporlume LED sealed industrial

4', 3500 to 7000 lumens

## 4' Vaporlume LED V2, 5100 nominal lumens LER-111

		Candlepower					Coefficients of Utilization									
<b>Catalog No.</b>	V2WAE51L840-4	<b>Angle</b>	<b>End</b>	<b>45</b>	<b>Cross</b>	<b>Back-45</b>	<b>EFFECTIVE FLOOR CAVITY REFLECTANCE 20 PER (pfc=0.20)</b>									
<b>Test No.</b>	32640	<b>0</b>	1729	1729	1729	1729	<b>pcc</b>	80			70			50		
<b>S/MH</b>	1.2	<b>5</b>	1722	1716	1709	1716	<b>pw</b>	70	50	30	70	50	30	50	30	
<b>Source</b>	LED	<b>15</b>	1666	1651	1632	1651	<b>RCR</b>									
<b>Input Watts</b>	46	<b>25</b>	1542	1523	1494	1523	0	117	117	117	114	114	114	110	110	
<b>Delivered Lumens</b>	5129	<b>35</b>	1340	1307	1250	1307	1	108	103	97	104	100	95	94	92	
		<b>45</b>	1091	1039	1117	1039	2	97	89	81	94	86	80	82	77	
		<b>55</b>	817	909	884	909	3	89	78	69	85	76	68	72	66	
		<b>65</b>	533	670	574	670	4	81	68	59	79	68	58	65	56	
		<b>75</b>	280	309	286	309	5	75	61	53	71	59	52	57	50	
		<b>85</b>	75	107	86	107	6	68	55	46	67	54	46	52	45	
		<b>95</b>	26	47	34	47	7	64	50	40	61	48	40	46	40	
		<b>105</b>	24	42	30	42	8	58	46	36	57	45	36	42	35	
		<b>115</b>	14	39	29	39	9	56	41	34	54	40	33	40	33	
		<b>125</b>	6	28	28	28	10	52	39	30	51	38	30	36	29	
		<b>135</b>	4	16	24	16										
		<b>145</b>	3	5	12	5										
		<b>155</b>	2	2	3	2										
		<b>165</b>	2	2	2	2										
		<b>175</b>	2	2	2	2										
Comparative yearly lighting energy cost per 1000 lumens - <b>\$2.16</b> based on 3000 hrs. and \$.08 pwr KWH.																
Photometric values based upon tests performed in compliance with LM-79.																
							<b>Light Distribution</b>					<b>Average Luminance</b>				
							<b>Degrees</b>	<b>Lumens</b>	<b>% Luminaire</b>	<b>Angle</b>	<b>End</b>	<b>45°</b>	<b>Cross</b>			
							<b>0-30</b>	1344	26.1	<b>45</b>	7103	5648	5790			
							<b>0-40</b>	2176	42.3	<b>55</b>	6447	5616	5126			
							<b>0-60</b>	3842	74.7	<b>65</b>	5552	4964	3915			
							<b>0-90</b>	4992	97.1	<b>75</b>	4486	2974	2465			
							<b>90-120</b>	114	2.2	<b>85</b>	2784	1530	1043			
							<b>90-130</b>	133	2.6							
							<b>90-150</b>	148	2.9							
							<b>90-180</b>	149	2.9							
							<b>0-180</b>	5141	100.0							

## 4' Vaporlume LED V2, 7000 nominal lumens LER-107

		Candlepower					Coefficients of Utilization									
<b>Catalog No.</b>	V2WAE70L840-4	<b>Angle</b>	<b>End</b>	<b>45</b>	<b>Cross</b>	<b>Back-45</b>	<b>EFFECTIVE FLOOR CAVITY REFLECTANCE 20 PER (pfc=0.20)</b>									
<b>Test No.</b>	32614	<b>0</b>	2357	2357	2357	2357	<b>pcc</b>	80			70			50		
<b>S/MH</b>	1.2	<b>5</b>	2351	2342	2345	2342	<b>pw</b>	70	50	30	70	50	30	50	30	
<b>Source</b>	LED	<b>15</b>	2274	2271	2270	2271	<b>RCR</b>									
<b>Input Watts</b>	65	<b>25</b>	2101	2105	2089	2105	0	117	117	117	114	114	114	109	109	
<b>Delivered Lumens</b>	6985	<b>35</b>	1818	1814	1784	1814	1	108	103	97	105	100	95	94	92	
		<b>45</b>	1467	1462	1586	1462	2	97	89	81	94	86	80	82	77	
		<b>55</b>	1085	1302	1345	1302	3	89	78	69	85	76	68	72	66	
		<b>65</b>	701	959	891	959	4	81	68	59	79	67	58	65	56	
		<b>75</b>	365	469	503	469	5	75	61	52	71	59	52	57	50	
		<b>85</b>	92	170	176	170	6	68	55	46	67	54	46	52	45	
		<b>95</b>	36	67	53	67	7	64	50	40	61	48	40	46	40	
		<b>105</b>	33	57	39	57	8	58	46	36	57	45	36	42	35	
		<b>115</b>	19	53	39	53	9	56	41	34	54	40	33	40	33	
		<b>125</b>	8	38	38	38	10	52	39	30	51	38	30	36	29	
		<b>135</b>	4	20	33	20										
		<b>145</b>	3	6	18	6										
		<b>155</b>	2	2	4	2										
		<b>165</b>	2	2	2	2										
		<b>175</b>	2	2	2	2										
Comparative yearly lighting energy cost per 1000 lumens - <b>\$2.24</b> based on 3000 hrs. and \$.08 pwr KWH.																
Photometric values based upon tests performed in compliance with LM-79.																
							<b>Light Distribution</b>					<b>Average Luminance</b>				
							<b>Degrees</b>	<b>Lumens</b>	<b>% Luminaire</b>	<b>Angle</b>	<b>End</b>	<b>45°</b>	<b>Cross</b>			
							<b>0-30</b>	1830	26.1	<b>45</b>	9554	7946	8219			
							<b>0-40</b>	2961	42.3	<b>55</b>	8566	8043	7802			
							<b>0-60</b>	5230	74.7	<b>65</b>	7304	7108	6080			
							<b>0-90</b>	6798	97.1	<b>75</b>	5848	4516	4329			
							<b>90-120</b>	156	2.2	<b>85</b>	3444	2433	2142			
							<b>90-130</b>	183	2.6							
							<b>90-150</b>	203	2.9							
							<b>90-180</b>	205	2.9							
							<b>0-180</b>	7003	100.0							

# V2 Vaporlume LED sealed industrial

4', 3500 to 7000 lumens

## Energy Data

Model	Initial Delivered Lumens @ 25°C Ambient	Input Power	Lumens per Watt	Application notes
V2WAE35L840-4-UNV	3,699	32W	117 LPW	<ul style="list-style-type: none"> <li>Slightly less than 2 lamp F32T8 at room temperature, 35% energy savings.</li> <li>Equivalent to 2 lamp F32T8 in refrigerator (40°F), 35% energy savings.</li> </ul>
V2WAE43L840-4-UNV	4,431	38W	116 LPW	<ul style="list-style-type: none"> <li>Equivalent to 2 lamp F32T8 at room temperature, 15% energy savings.</li> <li>Double the output of 2 lamp F32T8 in freezer (25°F) at the SAME energy use.</li> </ul>
V2WAE51L840-4-UNV	5,129	46W	111 LPW	<ul style="list-style-type: none"> <li>Equivalent to high ballast factor 2 lamp F32T8 at room temperature, 15% energy savings.</li> </ul>
V2WAE70L840-4-UNV	6,985	65W	107 LPW	<ul style="list-style-type: none"> <li>Equivalent to 3 lamp F32T8 at room temperature, 30% energy savings.</li> </ul>

