

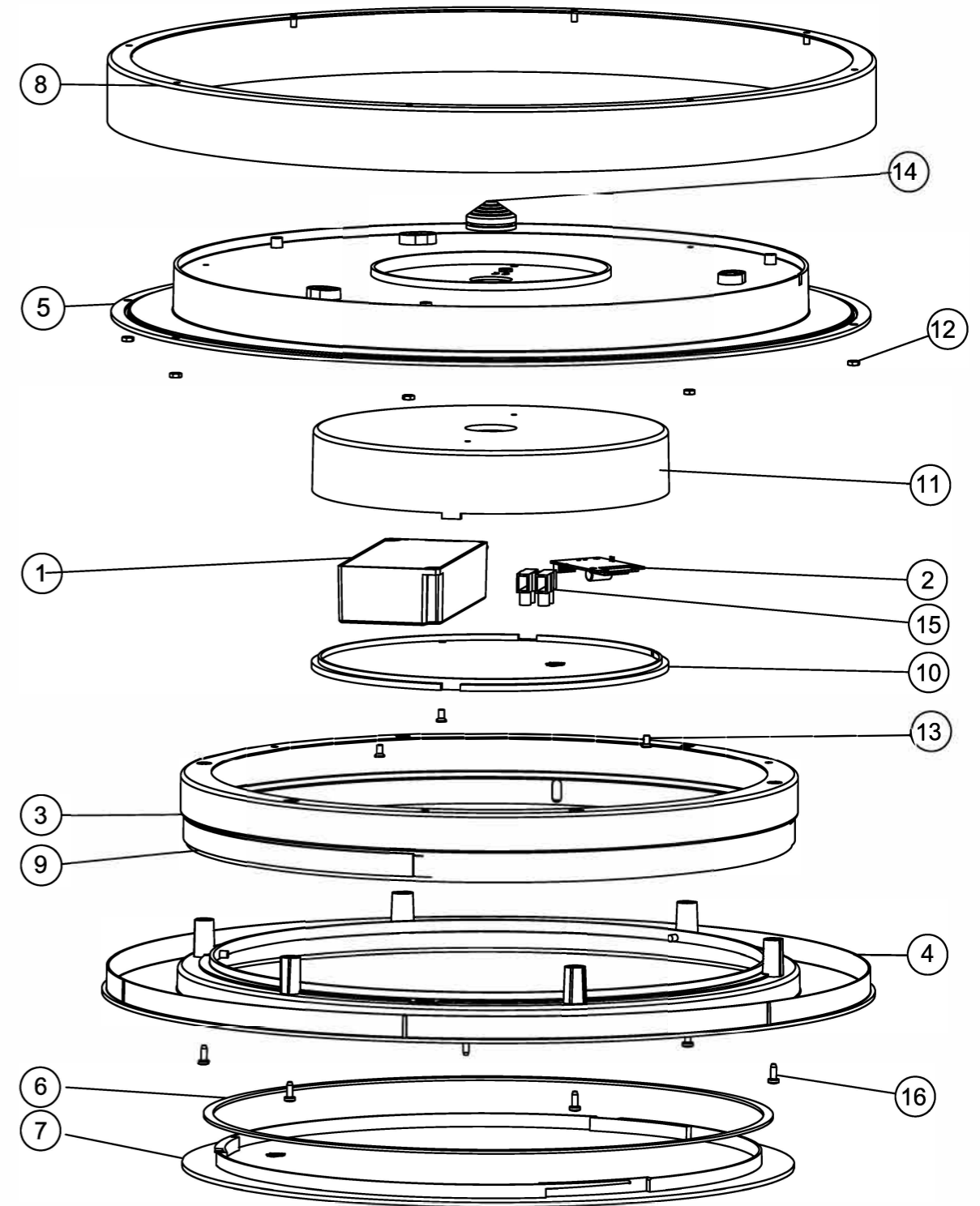
### Warnings

Always make sure the luminaire is detached from the mains socket  
Always make sure the DC cable is detached from the power supply  
Staring at the operating light source may cause eye injury

#	Disassemble/dismantle steps	Tools needed
a	Remove Front ring [7] from Diffuser [4]	
b	Unscrew 6pcs Screws [16] and remove Diffuser [4] from Upper diffuser [5]	screwdriver
c	Unscrew 3pcs Screws [13] and remove Mounting ring [3] from Upper diffuser [5]	screwdriver
d	Unscrew 3pcs Screws [13] and remove Junction box cover [10] from Junction box [11]	screwdriver
e	Unscrew 2pcs Screws and remove Hue Connect [2] from Junction box [11]	screwdriver
f	Remove Driver [1] from Junction box [11]	
g	Remove LED strip [9] from Mounting ring [3]	

#	COMPONENT	QTY
1	Driver	1
2	Hue Connect	1
3	Mounting ring	1
4	Diffuser	1
5	Upper diffuser	1
6	Water proof ring	1
7	Front ring	1
8	Outer ring	1
9	LED strip	1
10	Junction box cover	1
11	Junction box	1
12	NUT	8
13	Screw	3
14	Water proof plug	1
15	Terminal block	1
16	Screw	6

\* FOR LIGHT SOURCE-LED STRIP REMOVAL PLEASE SEE DOCUMENT 442295215544\_L2 Removal and Test Instruction Flex LED Strip



STATUS	DESCRIPTION	DESIGN ID	2021-09-02
	929003056701 Adore Hue ceiling lamp chrome 1x27W 24V	DOC 12NC	
NAME Li Ba	LOCAL PART ID		A3-L
CHECKED	DATE 2021-09-02		