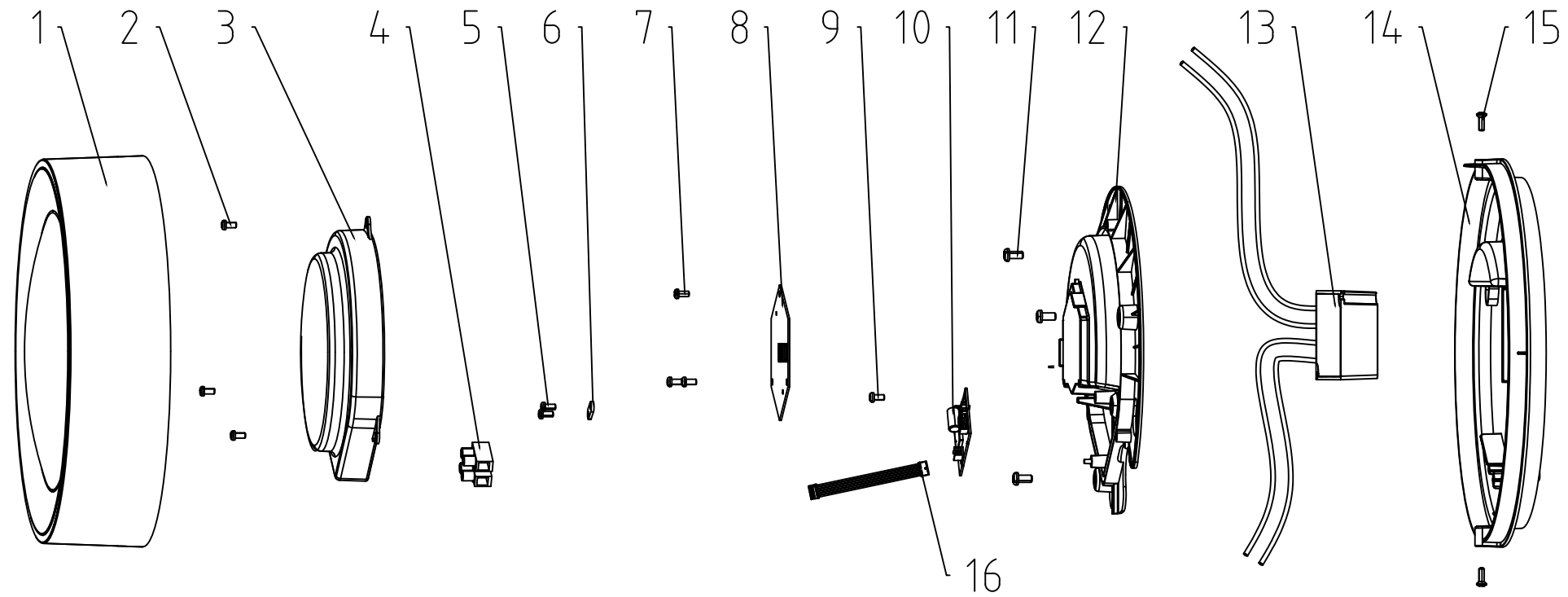


PHILIPS
hue



#	COMPONENT	QTY
1	DIFFUSER	1
2	SCREW	3
3	LENS	1
4	TERMINAL BLOCK	1
5	SCREW	2
6	CLAMPER	1
7	SCREW	3
8	LIGHT SOURCE -LED MODULE	1
9	SCREW	1
10	LIGHT SOURCE - HUE CONNECT	1
11	SCREW	3
12	HEAT SINK	1
13	CONTROL GEAR - PSU	1
14	BASE	1
15	SCREW	2
16	FLAT CABLE	1

Warnings

Always make sure the luminaire is detached from the mains socket
Always make sure the DC cable is detached from the power supply
Staring at the operating light source may cause eye injury

#	Disassemble/dismantle steps	Tools needed
a	REMOVE DIFFUSER (1) BY UNSCREWING THE SCREWS (15)	CROSS HEAD SCREW DRIVER
b	REMOVE LENS (3) BY UNSCREWING THE SCREWS (2)	CROSS HEAD SCREW DRIVER
c	REMOVE FLAT CABLE (16) FROM THE LIGHT SOURCE - LED MODULE (8) AND LIGHT SOURCE - HUE CONNECT (10)	-
d	REMOVE WIRES OF THE CONTROL GEAR - PSU (13) FROM THE LIGHT SOURCE - HUE CONNECT (10)	FLATHEAD SCREWDRIVER OR WAGO TOOL #2065
e	REMOVE THE LIGHT SOURCE - LED MODULE (8) BY UNSCREWING THE SCREWS (7)	CROSS HEAD SCREW DRIVER
f	REMOVE THE LIGHT SOURCE - HUE CONNECT (10) BY UNSCREWING THE SCREW (9)	CROSS HEAD SCREW DRIVER
g	REMOVE TERMINAL BLOCK (4) BY UNSCREWING WIRES OF THE CONTROL GEAR - PSU (13)	FLAT HEAD SCREW DRIVER
h	REMOVE CLAMPER (6) BY UNSCREWING THE SCREWS (5)	CROSS HEAD SCREW DRIVER
i	REMOVE HEAT SINK (12) FROM THE BASE (14) BY UNSCREWING THE SCREWS (11)	CROSS HEAD SCREW DRIVER
j	REMOVE THE CONTROL GEAR - PSU (13)	-

SKU	Color	Country
915005843201	BLACK	EU
915005843301	STAINLESS STEEL	EU

STATUS	DESCRIPTION	DESIGN ID
2021-04-12	daylo wall lantern black 1x15W 24V daylo wall lantern inox 1x15W 24V	DOC 12NC
NAME JZ	LOCAL PART ID	SH. 1
CHECKED	DATE	SH. A3-P

CONFIDENTIAL, PROPERTY OF: © 2020 Signify Holding