

HADCO

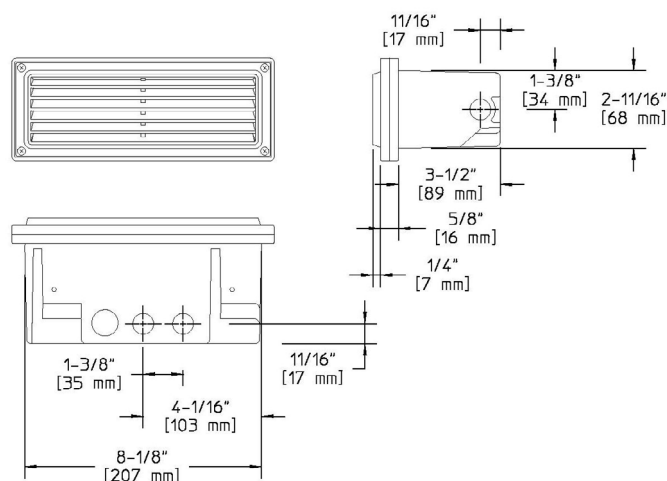
by @signify

Landscape

Step light

RSC2 INC

Project: _____
Location: _____
Cat.No: _____
Type: _____
Lamps: _____ Qty: _____
Notes: _____



Ordering Guide

Example: RSC2 A K5 I E

Product Code	RSC2	Aluminum Steplyte
Finish	A H	Black Bronze
Optics	K5	Symmetric Optics
Wattage	I	40W T10
Voltage	E	120V
Thermal Protection	P	Thermal Protection Device *2

*2 Thermal protection device is required for installations in drywall, plaster, wood or other non-masonry materials and must be ordered as an option, except for fluorescent. Add the suffix "P" to the catalog to order.

Specifications

HOUSING:

Die-cast aluminum back box contains less than 0.3% copper to prevent corrosion in concrete or masonry applications. Die-cast aluminum trim ring contains less than 0.3% copper to resist corrosion. Die-cast copper-free aluminum with 45° cutoff, with frosted tempered glass. Gasketing is silicone. Fasteners are 300 series stainless steel. Note: Recessed housing contains four (4) 1/2" NPS conduit inlets (two (2) on bottom and one on each side) and internal pull-through wiring compartment.

FINISH:

Thermoset polyester powdercoat is electrostatically applied after a five-stage conversion cleaning process and bonded by heat fusion thermosetting. Zinc-rich primer and thermoset powdercoat for durability.

OPTICAL ASSEMBLY:

Symmetric reflector is precision formed, steel with a white reflective coating. The cast louver offers lower light levels with cut-off for lighting stairways or general lighting where shielding of the light source is more important than high light levels.

LAMPING:

Lower wattage lamps are acceptable.

ELECTRICAL ASSEMBLY:

Fixture is pre-wired with 18 AWG black, white, and ground wires. 1141 lamps use an integral 120V/12V transformer.

WARRANTY:

Three-year limited warranty.

CERTIFICATIONS:

ETL listed to U.S. safety standards for wet locations. cETL listed to Canadian safety standards for wet locations. Manufactured to ISO 9001:2008 Standards. ADA Compliant when used in indoor and outdoor wall applications.

RSC2 Step light INC

Specifications

Height :

3 1/2" (90mm)

Width:

9" (229mm)

Depth:

3 1/2" (90mm)

Max. Weight:

3.64 lb.

