

DESCRIPTION

The Plug-In System provides factory installed branch circuit wiring and plug-in connectors when row mounting fixtures. This labor and time saving option is designed to simplify fixture installation and wiring and allows fixtures to be installed quickly and easily. The PI system is available for fixture sections up to 8' in length for continuous row wiring by simply plugging the sections together. Each PI section is factory wired to the ballast leads and color coded for easy circuit identification. Standard PI system harness contains no separate ground wire, with ground provided by the fixture body. An option to the system provides a separate ground wire in the harness where required.

Catalog #	Type
Project	
Comments	
Prepared by	Date

ORDERING INFORMATION

Catalog Number Suffix	Number of Circuits	Circuit Wired To Ballast
PI 1 BLK	1	Black
PI 2 BLU	2	Blue
PI 2 BLK	2	Black
PI 3 RED	3	Red
PI 3 BLU	3	Blue
PI 3 BLK	3	Black

Catalog Numbering System

The PI System is available in sections up to 8' in length for continuous row wiring by simply plugging the sections together. Each PI section is factory wired to the ballast leads. Color coding of wires is as follows:

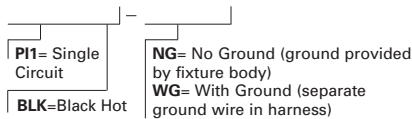
PI-1 = One Circuit - 2 Wires: one black, one white

PI-2 = Two Circuits - 3 Wires: one black, one blue, one white

PI-3 = Three Circuits - 4 wires: one black, one blue, one red, one white

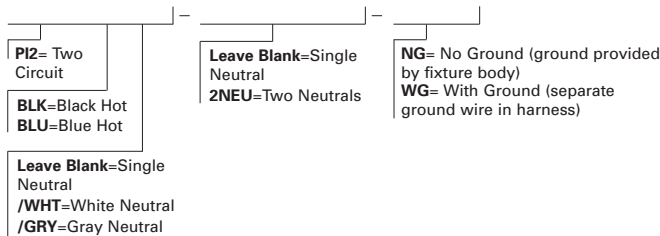
PI1 - Single Circuit Plug-In

SAMPLE NUMBER: P11BLK-WG



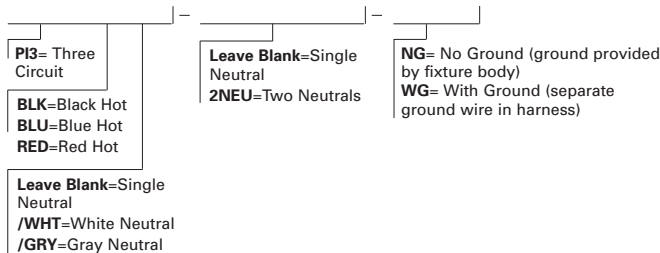
PI2 - Two Circuit Plug-In

SAMPLE NUMBER: P12BLK-WG



PI3 - Three Circuit Plug-In

SAMPLE NUMBER: P13BLK-WG



When ordering the PI2/PI3 System it is necessary to specify the number of fixtures required for each circuit.

Example: 200 (Fixture Quantity) SS-296-120V-PI2

Requires:

100 (Fixture Quantity) SS-296-120V-PI2/BLK

100 (Fixture Quantity) SS-296-120V-PI2/BLU

SS-296-**PI1**=specify wire color of BLK for single circuit PIs since all the ballast leads will be wired to the black and white wires.

SS-296-**PI2BLK**=2 circuit PI with ballast leads wired to black and white wires

SS-296-**PI2BLU**=2 circuit PI with ballast leads wired to blue and white wires

SS-296-**PI3RED**=3 circuit PI with ballast leads wired to red and white wires

The Plug-In System is available on fixtures using Rapid Start, Slimline (430 MA), High Output (800 MA), or Power Groove (1500 MA) lamps up to 20 amps per circuit.

Available on the following fixture series:

Industrials

IA/IC Series
 DI /DIM /DIM SERIES
 EI /EIM /EIVM Series
 HB
 I5

Strips

SS Series
 SSL, SNSM, SRA Series
 STN Series
 STM Series
 STW Series
 RCG Series
 SM/SML

Wraps are available with PI1 option only. For other fixture series availability consult factory.

PI Option

Plug In-System

Catalog #	Type
Project	
Comments	
Prepared by	Date

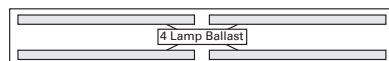
TILW Option

Tandem In-Line
Wiring System

DESCRIPTION

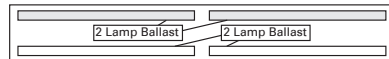
The Tandem In-Line Wiring option provides factory installed wiring when fixture sections are applied in pairs, and require left/right lamp switching. To explain, ballast receive their power from the circuit, with lamps getting their power from the ballast. TILW is the method of applying power from the ballast to specific lamps. TILW only applies to 2 or more lamp cross sections. If the luminaire has only one row of lamps, TILW is already present and unnecessary to specify. The TILW option is available on IA/IC, DI/DIM/DIVM, EI/EIM/EIVM, SS, SSL, SN, SNSM, SNRA, STN, STM, STW, RCG, P410, UT, I5 and BSX.

The following ballast configuration does not allow for TILW:



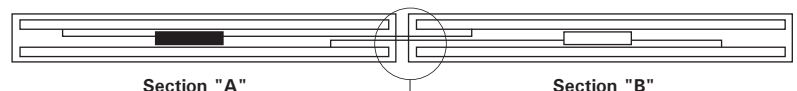
8TSS-232-xxx-EB81

Following ballast configuration shows a fixture that is compatible with TILW option:



8TSS-232-xxx-EB82-TILW

The TILW can also be used in applications where Master-Satellite configurations are required. Simply specify the appropriate Master-Satellite description followed by TILW. Standard TILW is provided with push-in connectors (shown below) for fixture wiring connections. Optional PITLW is provided with pre-configured wiring harness for quick and easy installation of Master-Satellite tandem in-line wired fixtures. Shown below is an example of a ballast configuration, along with sample fixture catalog number, including Master-Satellite and TILW.

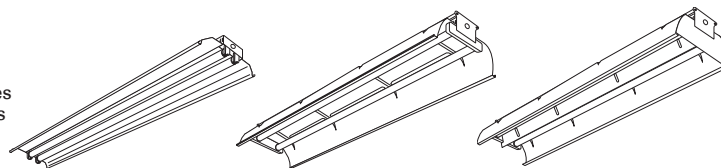


SS-232-xxx-EB82/MSX-TILW

AVAILABILITY

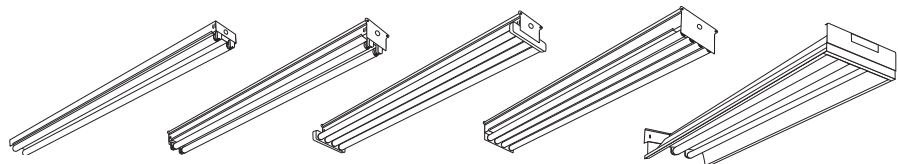
Industrials

IC/IA Series
DI, DIM, DIVM Series
EI, EIM, EIVM Series



Strips

SS Series
STN Series
STM Series
STW Series
RCG Series
ECG Series



For other fixture series availability consult Pre Sale Technical Support