



Emergency options for Modulyte, LyteProfile, and Calculite commercial downlighting families with integral or remote mounted test switch.

Calculite LED compatibility

Calculite LED gen 3 round & square New construction (N) frames only	Nominal EM lumens	Ceiling mount with EM test button	Reflector trim mount with EM test button
3"	430-660lm	Standard	Available (round DL only)
4"	680-760lm	Standard	Available (DL and WW only)
6" & 7"	680-760lm	Standard	Available (DL and WW only)

LyteProfile LED compatibility

LyteProfile LED round New construction (N) frames only	Nominal EM lumens	Ceiling mount with EM test button	Reflector trim mount with EM test button
3"	430-660lm	Standard	Available (round DL only)
4"	690lm	Standard	Available (DL only)
6"	700lm	Standard	Available (DL only)

Modulyte LED compatibility

Modulyte LED round New construction (N) frames only	Nominal EM lumens	Ceiling mount with EM test button	Reflector trim mount with EM test button
4"	660lm	LC6M6 Field Installed Accy or EM6R factory option	EM6I factory option
6"	720lm		EM6I factory option
8"	720lm		EM6I factory option

IEM6 Option Codes		Switch Orientation by Shape		
Family	Aperture/Type	Remote	Integral	Excluded Integral Styles
Calculite	3" DL/LW/AA	●■	●	LW, AA
	4" DL/WW	●■	●■	LW, AA
	6" DL/WW	●■	●■	LW
	7" DL/WW	●	●	LW

IEM6 Option Codes		Switch Orientation by Shape		
Family	Aperture/Type	Remote	Integral	Excluded Integral Styles
LyteProfile	3" DL/LW/AA	●■	●	LW, AA
	4" DL/LW	●■	●■	LW
	6" DL/LW	●■	●■	LW
EasyLyte	4" DL	●	---	---
	6" DL	●	---	---
Modulyte	4" DL	●	---	Cylinders
	6" DL	●	---	Cylinders

Features

Battery pack: Bodine BSL06 battery pack featuring self-test and self-diagnostic functionality provides 90 minutes of lighting when AC power fails. Meets National Electrical and Life Safety Codes. Accessible from below with attachment to the back side of the new construction frame junction box. Compatible with 120/277V.

To estimate lumen output in emergency mode, multiply emergency pack wattage by luminaire configuration efficacy, then by 1.1.

Test switch/charge light

Trim Mount: Can be installed integral to trim when ordered with IEM6 option code

Examples:

Calculite (trim): C4RDLCCIE6
LyteProfile: P4RDL25935WCCZ10UIEM6
Modulyte: M4RDL259CSWCDZ10UEM6I

Remote Mount: Order CAEM6TSCP mounting plate accessory. See line art on page 2 for CAEMTSCP for dimensions.

Mounting: Tool-less attachment to back side of new construction frame junction box.

Labels and Listings

cULus listed for damp locations only. Not approved for Chicago plenum applications.

Warranty



5 year limited warranty
Visit [Signify.com/warranties](https://www.signify.com/warranties) for more information on Signify's standard 5-year limited warranty on complete luminaire systems.

LED-EM Calculite, LyteProfile, & EasyLyte

Emergency Battery Pack

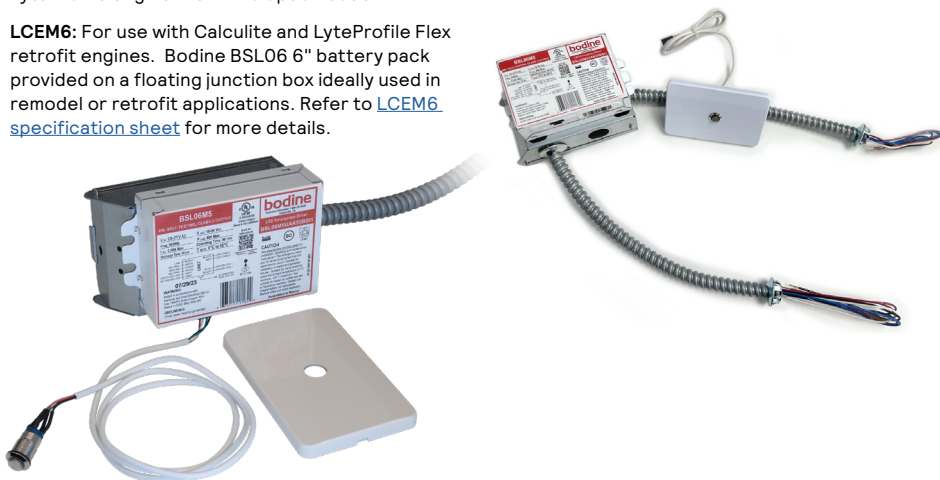
Accessories

CAEM6: For use with Calculite and LyteProfile engines with new construction (N) frames only. Field install EM6 kit with Bodine BSL06 6W battery pack with self-test/self-diagnostic. Includes EM pack mounted on cover plate for attachment to back side of junction box. Includes CAEM6TSCP rectangular plate for remote mounting test switch. To mount test switch to trim for new construction frame, order Calculite trim or LyteProfile engine with IEM6 option code.

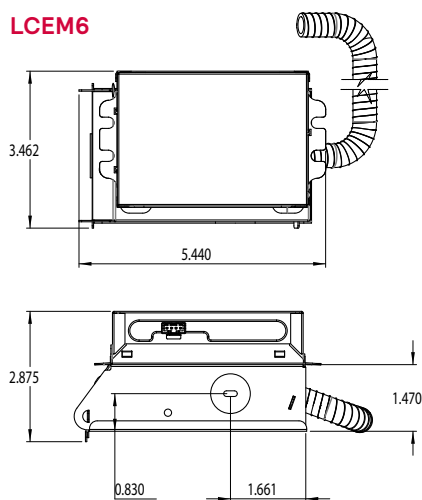
LCEM6: For use with Calculite and LyteProfile Flex retrofit engines. Bodine BSL06 6" battery pack provided on a floating junction box ideally used in remodel or retrofit applications. Refer to [LCEM6 specification sheet](#) for more details.

CAEM6TSCP: Ceiling cover plate for remote mounted EM6 test switch. 1/2" (25mm) hole. 4 3/8" (109mm) x 2 3/4" (69mm) rectangular. Includes two mounting screws. White finish.

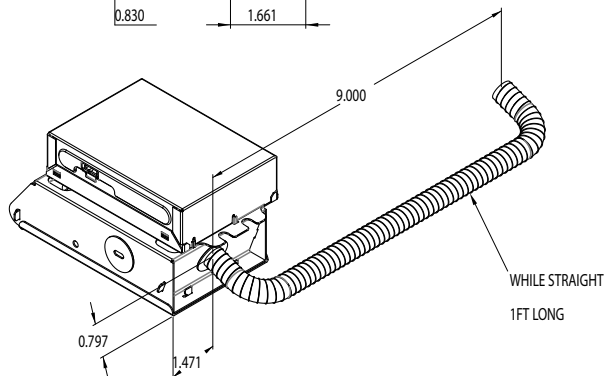
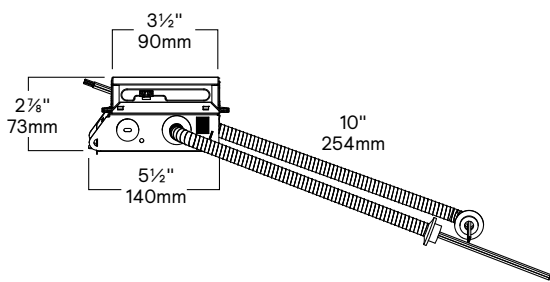
MLEM6: For use with ModuLyte engines. Bodine BSL06 6" battery pack provided on a floating junction box ideally used in remodel or retrofit applications. Refer to [ModuLyte downlight specification sheet](#) for more details.



LCEM6



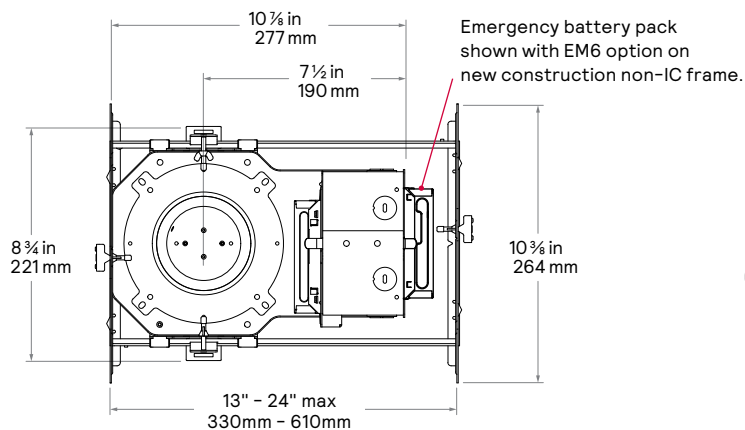
MLEM6



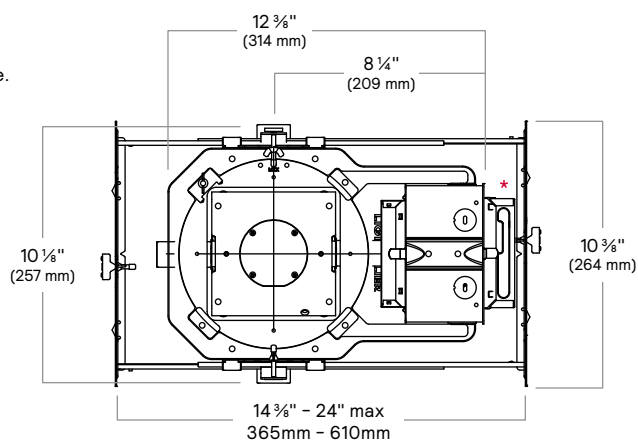
LED-EM Calculite, LyteProfile, & EasyLyte

Emergency Battery Pack

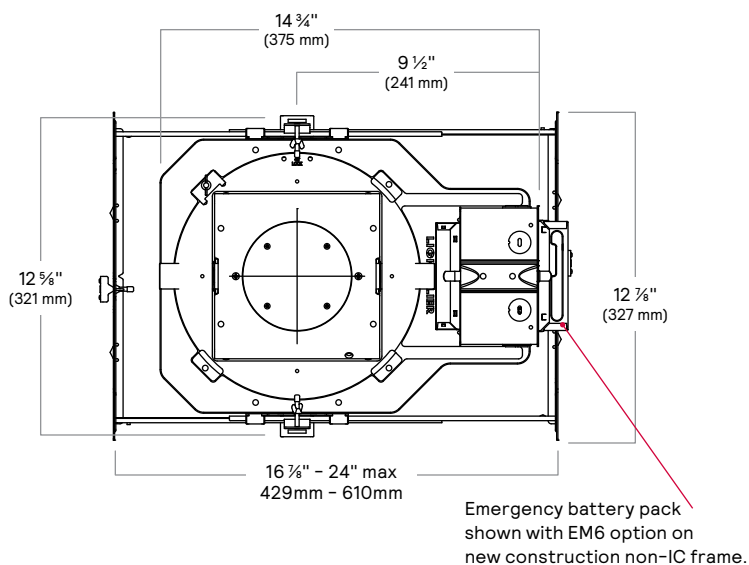
3RN/4RN frame dimensions



3SN/4SN/6RN frame dimensions

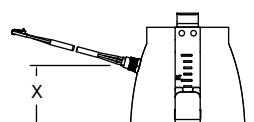
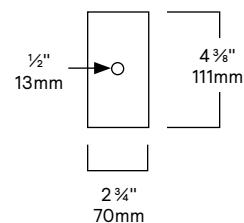


6SN/7RN frame dimensions



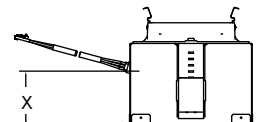
CAEM6TSCP Cover Plate Accessory

Purchased separately for remote test switch
Included with CAEM6 field installed EM pack



Round Apertures

3" - 1 7/8" (46mm)
4" - 2 3/8" (60mm)
6" - 3 3/8" (85mm)
7" - 1 1/8" (105mm)



Square Apertures

4" - 2 1/4" (55mm)
6" - 2 5/8" (66mm)

* Emergency battery pack shown with EM6 option on new construction non-IC frame.