



Day-Brite / CFI 8700 Series specification grade wet or damp location wraps are designed for medium or minimum security applications such as corridors, locker rooms, school restrooms and tunnels.

Project:

Location:

Cat. No:

Type:

Notes:

Ordering guide

Example: 8705-232-UNV-F-F1-1/2-EB

Family	No. of Lamps	Lamp Type/ Wattage ¹	Voltage	Lens Type	Fasteners	No. of Ballasts	Ballast Type	Options
<input type="text"/> - <input type="text"/>	<input type="text"/>	<input type="text"/> - <input type="text"/>	<input type="text"/> - <input type="text"/>	<input type="text"/> - <input type="text"/>	<input type="text"/> - <input type="text"/>	<input type="text"/> - <input type="text"/>	<input type="text"/> - <input type="text"/>	<input type="text"/>
8705 5" Wide Unit 8709 9" Wide Unit 8713 13" Wide Unit	1 One Lamp (8705 Only) 2 Two Lamps 3 Three Lamps (8713 Only) ³ 4 Four Lamps (8713 Only)	14 14WT5 (24") 17 17WT8 (24") 32 32WT8 (48") 28 28WT5 (48")	UNV Universal voltage 120-277V 347 347V	F .187 Prismatic Polycarbonate H .156 Prismatic Polycarbonate	F1 Allen Head Center Pin Reject F2 TORX Head Center Pin	1/1 1-Lamp Ballast 1/2 2-Lamp Ballast 1/3 3-Lamp Ballast 1/4 4-Lamp Ballast 2/2 Two 2-Lamp Ballasts 1/21 2-Lamp and 1-Lamp Ballast	EB Electronic Ballast, <10% THD EB10R T8 electronic ballast, program rapid start, <10% THD	EMG1 ER ballast 390-700 lumens (4' Only) ² EMG2 ER ballast 1100-1400 lumens (4' Only) ² GLR1 Fusing, Fast Blow (1-ballast) GLR2 Fusing, Fast Blow (2-ballast)

Footnotes

- Lamps supplied by others.
- Specify voltage.
- Three lamp 8713 utilizes a deeper 4-1/2" housing. See dimensional section.

General notes

- All options are factory installed.
- Consult factory for additional configurations.
- Many luminaire components, such as reflectors, lenses, sockets, lampholders, and LEDs are made from various types of plastics which can be adversely affected by airborne contaminants. If sulfur based chemicals, petroleum based products, cleaning solutions, or other contaminants are expected in the intended area of use, consult factory for compatibility.



Some luminaires use fluorescent or high intensity discharge (HID) lamps that contain small amounts of mercury. Such lamps are labeled, "Contain Mercury" and/or the symbol "Hg". Lamps that contain mercury must be disposed of in accordance with local requirements. Information regarding lamp recycling and disposal can be found at www.lamprecycle.org.



8700 Series Vandal Resistant

T8 or T5

Standards

- ETL (US/Canada) listed to UL Standards, Wet location listing.

Construction/Finish

- One-piece 16 gauge cold-rolled steel housing, die formed, spot welded reinforced construction. Welded at stress points.
- Three widths available, 5", 9", and 13" in 2ft or 4ft lengths.
- Standard baked white polyester powder coated paint finish. Multi-stage pretreatment process.

Lens

- Formed clear prismatic polycarbonate lens, pattern #12, .187" standard. Optional .156" lens available.
- Lens secured to housing with stainless steel Allen head center pin reject fasteners. Optional fasteners available.
- Gasketing on lens and housing ends to seal against moisture, insects, and dirt.

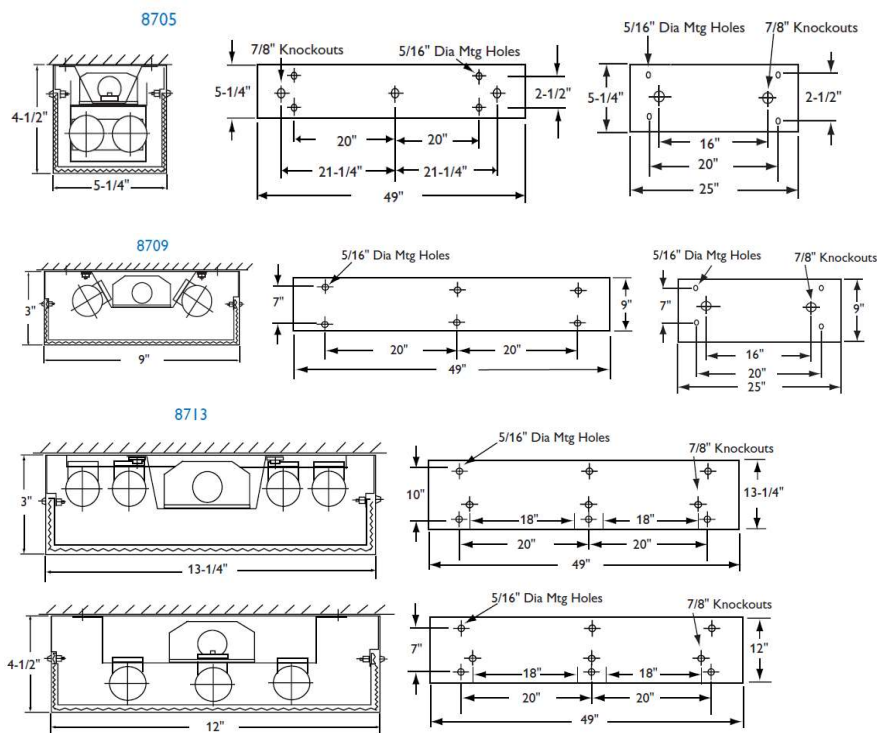
Electrical

- Standard Class P sound rated A electronic ballast.
- Optional self-contained emergency ballasts can be incorporated.

Installation

- Surface mount via 5/16" diameter mounting holes. The 8700 Series cannot be pendant mounted.

Dimensions



The information presented in this document is not intended as any commercial offer and does not form part of any quotation or contract.



©2021 Signify Holding. All rights reserved. This document contains information relating to the product portfolio of Signify which information may be subject to change. No representation or warranty as to the accuracy or completeness of the information included herein is given and any liability for any action in reliance thereon is disclaimed. All trademarks are owned by Signify Holding or their respective owners.

Signify North America Corporation
200 Franklin Square Drive,
Somerset, NJ 08873
Telephone 855-486-2216

Signify Canada Ltd.
281 Hillmount Road,
Markham, ON, Canada L6C 2S3
Telephone 800-668-9008