

# PHILIPS

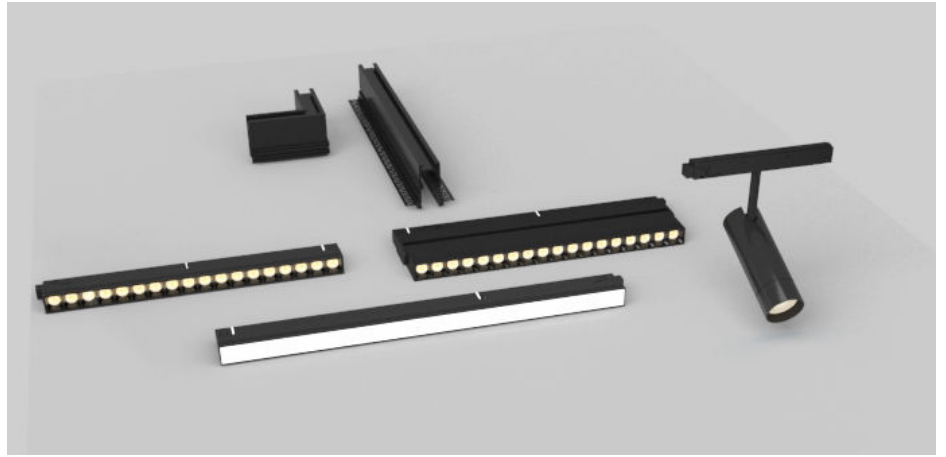
Recessed spot light

myLiving

Magnetic Sys

Black

6922341954610



## Smart lighting for you daily living

Fashion concise line draw the outline of the environment light path. In order to create a high quality space with Non-center Piece design, Philips launches brand new Magnetic Sys products. With the unique patent GentleBright technology, using professional 2-zone diffuser design to precise control of light, filter stray light effectively, reduce glare and bring comfortable and bright pure light! Recessed trimless tracker can be collocated with high flexibility, multi-module application adapt to unlimited installation scenario, which shows off fashion versatile highlight exclusive sense of life, leading contemporary fashion lighting, and decorate the beauty of modern space!

### **Match your interior**

- Decorative metallic finishing

### **Mounting**

- Easy to install, safe to use

# Highlights

## Decorative metallic finishing

Contemporary metallic finishing adds a modern touch.

## Easy to install, safe to use

The Philips LED retractable ceiling fan light has passed strict safety testing and includes drop-resistant screws and

a sturdy design alongside other important safety features.

# Specifications

## Design and finishing

- Color: Black
- Material: Aluminium
- Housing Color: Black
- Housing Material: Aluminium

## Durability

- Ambient temperature range: -20 to +40 °C

## Extra feature/accessory incl.

- Adjustable spot head: No
- Dimmable with remote control: No
- Remote control included: No

## Guarantee

- Warranty period: 1 years

## Light characteristics

- Constant light output: No
- Initial chromaticity: (NA) NA
- Light source replaceable: No
- Reflector material: -

## Miscellaneous

- Especially designed for: Living- & Bedroom

## Other characteristics

- EU RoHS compliant: Yes

## Power

- Input Voltage: 48

## Power consumption

- Power consumption tolerance: +/-10%

## Product dimensions and weight

- Net weight: 1.21 kg
- Cut out length: 100 cm
- Cut out width: 3.5 cm
- Height: 5.3 cm
- Length: 100 cm
- Recessed distance: 5 cm
- Width: 7.55 cm
- Overall height: 53 mm
- Overall length: 1,000 mm
- Overall width: 75.5 mm

## Service

- Warranty: 3 year(s)

## Technical specifications

- Lifetime up to: 25,000 hour(s)
- Mains power: 48 V
- Fixture dimmable: No
- LED: No
- Built in LED: No
- IP code: IP20
- Class of protection: Class III
- Dimmable: No
- Flammability mark: For mounting on normally flammable surfaces
- Driver included: No
- Suitable for random switching: No
- Ingress protection code: IP20 | Finger-protected
- Mech. impact protection code: IK03 | 0.3 J
- Glow-wire test: Temperature 650 °C, duration 30 s
- Protection class IEC: Safety class III

**Packaging dimensions and weight**

- EAN/UPC - product: 6922341954610
- Net weight: 1.24 kg
- Gross weight: 1.33 kg
- Height: 3.5 cm
- Length: 6 cm
- Width: 108 cm
- Material number (12NC): 929003206510



Issue date: 2023-09-07  
Version: 0.44

© 2023 Signify Holding. All rights reserved. Signify does not give any representation or warranty as to the accuracy or completeness of the information included herein and shall not be liable for any action in reliance thereon. The information presented in this document is not intended as any commercial offer and does not form part of any quotation or contract, unless otherwise agreed by Signify. Philips and the Philips Shield Emblem are registered trademarks of Koninklijke Philips N.V.

[www.lighting.philips.com](http://www.lighting.philips.com)