

LUMEC

by @signify

Urban

Bollard

Callisto Series



CALB1

CALB2

The Callisto Bollard Series offers a modern yet timeless style to help complete a setting and tie-in architectural elements to create a harmonious effect that sets projects apart. They are perfectly suited to embellish and enhance the comfort of parks, walkways, recreational activity sites and building entryways.

Project: _____

Location: _____

Cat.No: _____

Type: _____

Lamps: _____ Qty: _____

Notes: _____

Ordering guide

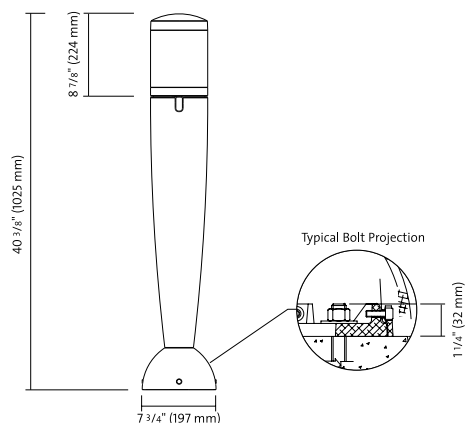
example: CALB1-50HPS-240-PH-VPA-BE2TX

Product	Lamp	Voltage	Options	Finish ¹
CALB1				
CALB1			PH Photocell	BE2TX Midnight Blue Textured
CALB2			VPA Vandalproof hardware	BE6TX Ocean Blue Textured
				BE8TX Royal Blue Textured
				BG2TX Sandstone Gold Textured
				BKTX Black Textured
				BRTX Bronze Textured
				GN4TX Blue Green Textured
				GN6TX Forest Green Textured
				GN8TX Dark Forest Green Textured
				GNTX Green Textured
				GY3TX Medium Grey Textured
				RD2TX Burgundy Textured
				RD4TX Scarlet Textured
				WHTX White Textured
				NP Natural Alum.
				TG Hammer-tone
				TS Hammer-tone Silver
	6LEDB Blue	20 120V		
	6LEDE Red	208 208V		
	6LEDW White	240 240V		

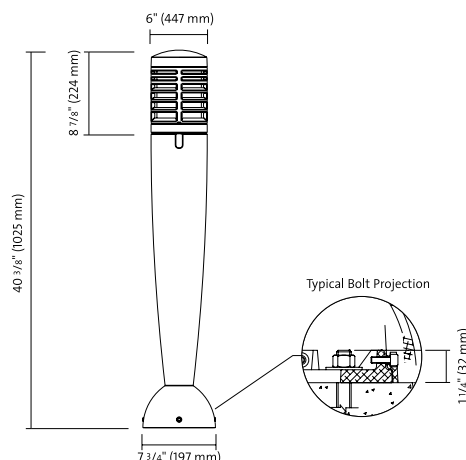
1. Consult Lumec's Color Chart for complete specifications.

Socket: GX24Q-2 (18W), GX24Q-3 (26W)(32W), GX24Q-4 (42W), triple tube for compact fluorescent (lamp not included).

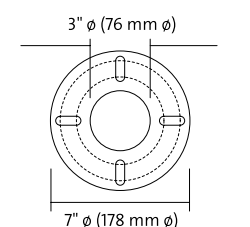
CALB1



CALB2



Anchor Plate



Bolt circle
5-1/2" (140mm)
B.C. possible:
from 4-3/8" to 6" (111mm to 152mm)

Mounting details

Comes with 4 steel anchor bolts,
3/8" x 12" (10mm x 305mm),
4 nuts and 4 washers.

Important: Do not obstruct space between anchor plate and concrete base.

CALB1 Callisto Series

Bollard

Specifications

Hood

Made of die cast (356) aluminum, assembled mechanically.

Lens

Made of clear acrylic.

Base

Made of die cast (356) aluminum, mechanically assembled to the anchor plate.

Bollard Options

Stainless steel coated decorative screen. Also available with copper coated decorative screen.

Finish

"Hot dip" chemical etching preparation. Lumital™ polyester powder coat finish. Excellent color retention as per #ASTM D2244, and outstanding salt-spray resistance according to #ASTM B117 testing procedures.

Hardware

All exposed screws are made from stainless steel. All seals and sealing devices are made and/or lined with EPDM and/or silicone.

Ballast / HID

High power factor of 98%. Electronic compact fluorescent ballast, operating range: 50Hz - 60Hz. Programmed rapid start. Lamp minimum starting temperature of 0°F (-18°C), w/ auto reset shutdown circuit. Assembled on a tray with quick disconnect plug.

Ballast / 6LEDA/6LEDB/6LEDG/6LEDR/6LEDW

Lamp

6-watt light-emitting diodes (LEDs).

Driver

High power factor of 90%. Electronic driver, operating range 50Hz - 60Hz. Lamp minimum starting temperature of -40°F (-40°C).

Assembled on a tray with quick disconnect plug.

